



## ZigBit™ Development Tools

### Easy-to-Use Tools for Evaluation and Development

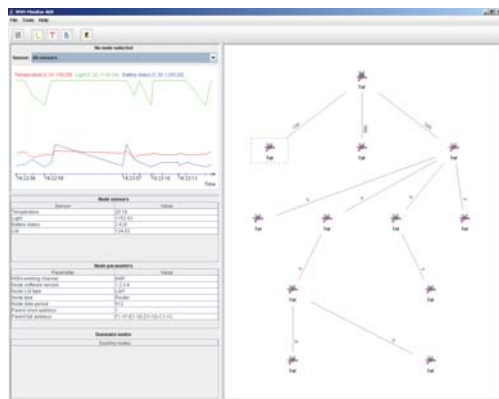
MeshNetics offers the developers easy-to-use tools to evaluate the ZigBit 802.15.4/ZigBee module and develop a module-based wireless solution. **Development Kit** is a convenient way to assess range performance and power consumption of modules in-field. Development Kit also enables developers to write custom embedded applications using eZeeNet API. Each kit comes complete with everything you need to prototype, develop and deploy wireless applications based on ZigBit module platform.



#### Development Kit Contents:

- 3 x MeshBean development boards with sensors
- 3 x USB cables
- 2 x External interface cables
- 1 x software & documentation CD

#### WSN Monitor: Network topology view



### ZigBit™ Development Kit (ZDK)

#### Developer's Tools to Create Custom Applications

- Sample applications to speed up application development
- Open source HAL to provide full programming support and integration of 3rd-party sensors
- Intuitive development environment from Atmel
- Convenient reference drivers and APIs for UART, I2C, ADC, and 1-wire interfaces
- eZeeNet API is 100% ANSI C99 compliant

#### MeshBean Development Boards

- Feature different antenna options: PCB, Dual Chip antenna, SMA connector
- Support standard extension connectors
- Include temperature, light sensors and other peripheral devices on board

#### eZeeNet: A Robust IEEE802.15.4/ZigBee Software Stack

- Conforms to ZigBee specification
- Tailored for easy-to-use networking in sensing, control, monitoring and data acquisition applications
- Supports mesh and tree network topologies

#### SerialNet: Serial AT Commands for Easy Application Prototyping

- Layered on top of eZeeNet IEEE802.15.4/ZigBee software stack
- Allows programming the board through AT-command serial interface
- No need to program the MCU directly
- Easy evaluation of eZeeNet stack functionality via AT-commands

#### WSN Monitor: Software for Sensor Networks Visualization

- Visualizes typical data acquisition scenario
- Allows easy evaluation of range and network performance, incl. self-healing feature
- Supports visualization of network topologies
- Allows remote network configuration from your PC

## Support Packages

ZigBit Development Kit is offered with 2 support packages:

• **ZigBit Development Kit Lite** gives you access to standard evaluation and development tools and comes with 45 days of complimentary support. This option is good for product demonstration, platform evaluation and quick application prototyping.

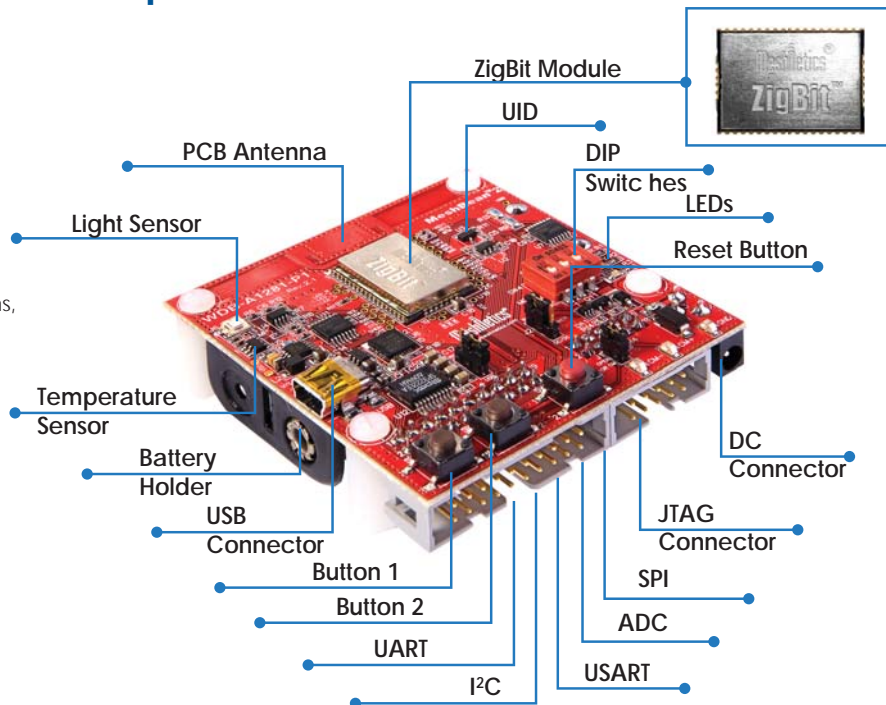
• **ZigBit Development Kit Complete** comes with 1 year of professional support which provides users with continuous software updates, dedicated design-in support, and RF design assistance. It's ideal for customers engaged in a full cycle of developing, prototyping, and launching innovative products made possible by MeshNetics ZigBit wireless platform.

ZDK Edition	Lite	Complete
Part Number	ZDK-A1281-LTE	ZDK-A1281-CPT
Support Duration	45 days	1 year
Hardware design support	+	+
RF design support	+	+
Software development support	+	+
Early software release access	-	+
Access to Gerber Files	-	+
Additional sample applications	-	+
Response time	72 h, workdays	72 h, workdays
Support channel	E-mail	E-mail
Price	\$399	\$899

### MeshBean Development Board with Sensors

#### MeshBean Features

- 2-layer PCB board featuring ZigBit OEM module
- Three configuration options: PCB, Dual Chip antenna, SMA connector, based on ZigBit Module
- Input options include DIP switches + 3 buttons, 4 ADC connectors, I2C light sensor and temperature sensors
- Output via 3 LEDs
- Input/output via USB and JTAG connectors, USART, 1-Wire and 9 GPIO pins
- Power options include USB, 2 AA batteries or mains power



#### Ordering Information

ZigBit Development Kit Lite  
Part Number: ZDK-A1281-LTE  
Description: Support option Lite

ZigBit Development Kit Complete  
Part Number: ZDK-A1281-CPT  
Description: Support option Complete

#### ZigBit Module Samples\*

Part Number: ZDM-A1281-B0  
Description: 2.4GHz IEEE802.15.4/ZigBee OEM Module w/Balanced RF Port

Part Number: ZDM-A1281-A2  
Description: 2.4GHz IEEE802.15.4/ZigBee OEM Module w/Dual Chip Antenna

#### MeshBean Development Boards\*

Part Number: WDB-A1281-P1  
Description: with ZDM-A1281-B0 Module

Part Number: WDB-A1281-A2  
Description: with ZDM-A1281-A2 Module

Part number WDB-A1281-E1  
Description: with SMA connector and external antenna

\* - Additional MeshBean boards and module samples can be ordered separately

#### About the company

**MeshNetics** makes industry's smallest IEEE802.15.4/ZigBee modules with best-in-class range. All MeshNetics ZigBee networking software is free to download. MeshNetics is a single source of ZigBee modules, networking software, technical support, and design services to its clients, such as OEMs and system integrators. This combination of products and services enables faster time-to-market and significant cost savings for clients, working on ZigBee-based wireless sensing solutions in building automation, energy efficiency, HVAC, AMR, predictive maintenance, asset tracking and other application areas. For more information, please visit [www.meshnetics.com](http://www.meshnetics.com).

#### MeshNetics

##### EMEA Office

Am Brauhaus 12  
01099, Dresden, Germany  
Tel: +49 351 8134 228,  
Fax: +49 351 8134 200  
E-mail: [info@meshnetics.com](mailto:info@meshnetics.com)

##### US Office

5110 N. 44th St., Suite L200  
Phoenix, AZ 85018 USA  
Tel: +1 (602) 343-8244  
Fax: +1 (602) 343-8245  
E-mail: [info@meshnetics.com](mailto:info@meshnetics.com)

##### Russia Office

9 Dmitrovskoye shosse,  
Moscow, 127434, Russia  
Tel: +7 (495) 725-8125  
Fax: +7 (495) 725-8116  
E-mail: [info@meshnetics.com](mailto:info@meshnetics.com)

Distributed by: