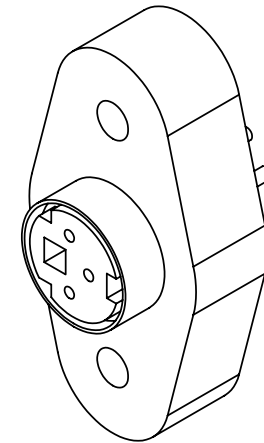
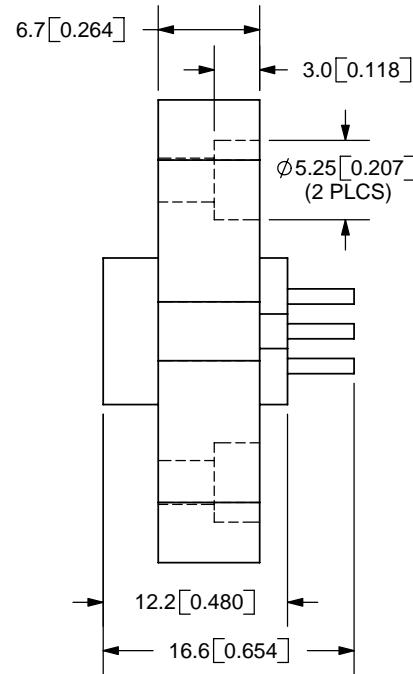
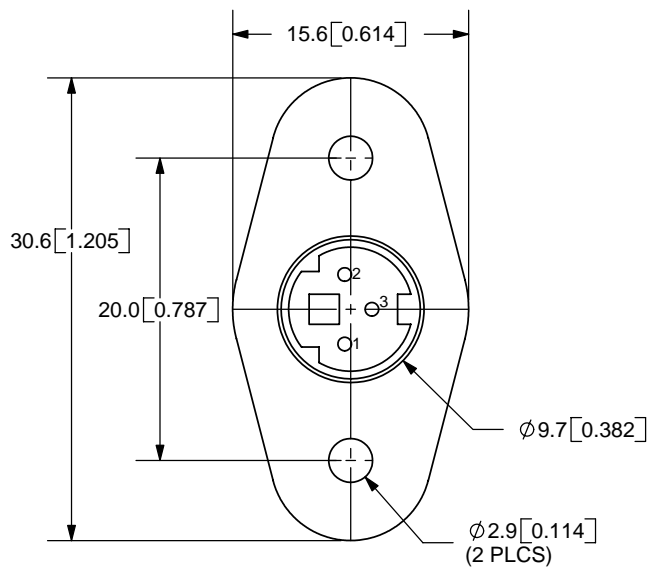


| | | |
|------|-------------|-----------|
| REV. | DESCRIPTION | DATE |
| A | NEW DRAWING | 2/27/2006 |



TOLERANCE:
X.X ±0.05mm
X.XX ±0.05mm



SPECIFICATIONS:
RATING: 12V DC @ 2A
CONTACT RESISTANCE: 30m OHMS MAX
INSULATION RESISTANCE: 50M OHMS MIN: 250V DC
VOLTAGE WITHSTAND: 250V AC R.M.S. FOR 1 MINUTE
LIFE: 5,000 CYCLES



CUI INC

20050 SW 112th Ave.
Tualatin, OR 97062
Phone: 503-643-4899
800-275-4899
Fax: 503-372-1266
Website: www.cui.com

| | | | | |
|---------|-----------------|---------|------------------------------------|--------------------|
| | MATERIAL | PLATING | TITLE: PANEL MOUNT MINI DIN SOCKET | REV: A |
| SHELL | Brass | Nickel | PART NO. MD-30SP | UNITS: MM [INCHES] |
| PINS | Phosphor Bronze | Silver | | |
| BODY | ABS | | DRAWN BY: ZRJ | APPROVED BY: |
| HOUSING | PBT | | | |

PC FILE NAME:
MD-30SP

COPYRIGHT 2006 BY CUI INC.