

PART NUMBER CODING

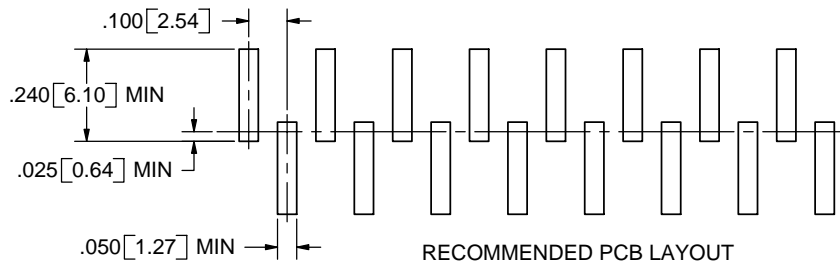
G C SFBN - M30

NUMBER OF POSITIONS PER ROW

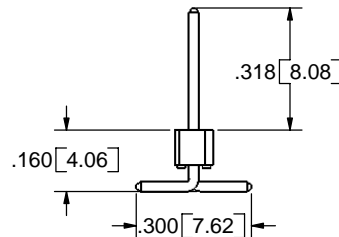
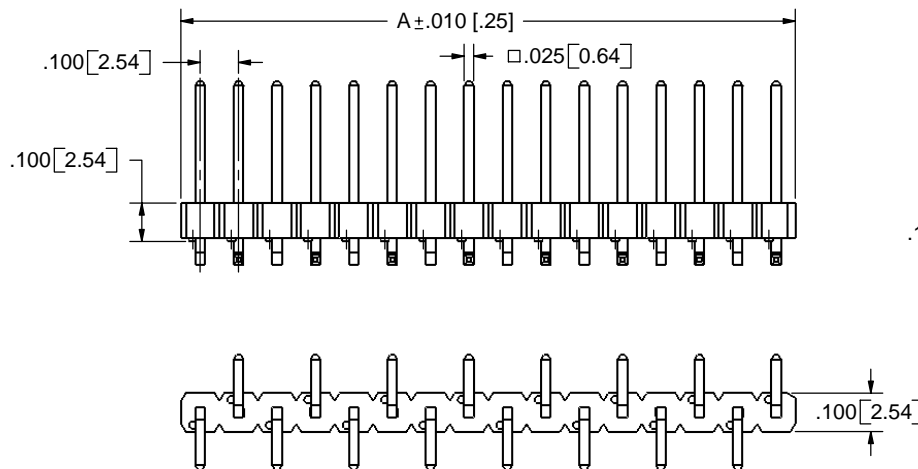
PLATING

ALL PLATINGS HAVE .000050" NICKEL UNDERPLATE

	CONTACT	TERMINATION
B =	.000010" GOLD	.000100" PURE TIN, MATTE
C =	.000030" GOLD	.000100" PURE TIN, MATTE
E =	.000100" PURE TIN, MATTE OVERALL	



RECOMMENDED PCB LAYOUT



REVISIONS

REV.	ECO. NO	DESCRIPTION	DATE	BY
A	474	ORIGINAL RELEASE	9/19/03	MNH
B	841	REVERSE BENDS	11/29/05	HT

PART NUMBER	A
G_C01SFBN-M30	0.100 [2.54]
G_C02SFBN-M30	0.200 [5.08]
G_C03SFBN-M30	0.300 [7.62]
G_C04SFBN-M30	0.400 [10.16]
G_C05SFBN-M30	0.500 [12.70]
G_C06SFBN-M30	0.600 [15.24]
G_C07SFBN-M30	0.700 [17.78]
G_C08SFBN-M30	0.800 [20.32]
G_C09SFBN-M30	0.900 [22.86]
G_C10SFBN-M30	1.000 [25.40]
G_C11SFBN-M30	1.100 [27.94]
G_C12SFBN-M30	1.200 [30.48]
G_C13SFBN-M30	1.300 [33.02]
G_C14SFBN-M30	1.400 [35.56]
G_C15SFBN-M30	1.500 [38.10]
G_C16SFBN-M30	1.600 [40.64]
G_C17SFBN-M30	1.700 [43.18]
G_C18SFBN-M30	1.800 [45.72]
G_C19SFBN-M30	1.900 [48.26]
G_C20SFBN-M30	2.000 [50.80]
G_C21SFBN-M30	2.100 [53.34]
G_C22SFBN-M30	2.200 [55.88]
G_C23SFBN-M30	2.300 [58.42]
G_C24SFBN-M30	2.400 [60.96]
G_C25SFBN-M30	2.500 [63.50]
G_C26SFBN-M30	2.600 [66.04]
G_C27SFBN-M30	2.700 [68.58]
G_C28SFBN-M30	2.800 [71.12]
G_C29SFBN-M30	2.900 [73.66]
G_C30SFBN-M30	3.000 [76.20]
G_C31SFBN-M30	3.100 [78.74]
G_C32SFBN-M30	3.200 [81.28]
G_C33SFBN-M30	3.300 [83.82]
G_C34SFBN-M30	3.400 [86.36]
G_C35SFBN-M30	3.500 [88.90]
G_C36SFBN-M30	3.600 [91.44]

NOTES:

1. INSULATOR MATERIAL: PA9T.
2. CONTACT MATERIAL: PHOSPHOR BRONZE
3. PLATING: SEE TABLE
4. OPERATING TEMPERATURE: -65°C TO +125°C
5. PROCESSING TEMPERATURE: 260°C MAX FOR 120 SECS MAX.
6. UL FLAMMABILITY: 94V-0
7. VOLTAGE RATING: 600 VDC MINIMUM AT SEA LEVEL.
8. CURRENT RATING: 3 AMP
9. INSULATION RESISTANCE: 5000 MEGA OHMS.
10. MODIFICATION: SURFACE MOUNT.



RoHS COMPLIANT

CUSTOMER COPY

UNLESS OTHERWISE SPECIFIED: DIMENSIONS ARE IN INCHES(MM)		DATE		NAME	
TOLERANCES: ANGULAR: ± 1° XX ± .02 [508] .XXX ± .005 [1270] XXXX ± .0005 [0127] PARENTHEICAL INFORMATION IS FOR REFERENCE ONLY		DRAWN		Aria	
THE INFORMATION HEREIN CONTAINS PROPRIETARY RIGHTS OF SULLINS ELECTRONICS AND IS NOT TO BE REPRODUCED, USED OR DISCLOSED TO OTHERS FOR ANY PURPOSE EXCEPT AS SPECIFICALLY AUTHORIZED IN WRITING BY SULLINS ELECTRONICS.		DESCRIPTION		HEADING, .100 CC	
INTERPRET DIMENSIONS AND GEOMETRIC TOLERANCING PER: ANSI Y14.5-1984		PART NUMBER		G_C_ SFBN-M30	
SIZE		SIZE		REV	
C		C10584		B	
SCALE: 4:1		SHEET 1 OF 1			