

LP3929

High Speed Bi-Directional Level Shifter and Ultra Low-Dropout CMOS Voltage Regulator and Line Protection

General Description

The LP3929 is designed for portable and wireless applications requiring level translation and power supply generation in a compact footprint.

The device level translates 1.8 V LVCMOS on the host (A) side to 2.85 V LVCMOS levels on the card (B) side for a miniSD / SD 4-bit bi-directional data bus.

Independent direct control of the CMD, Data0 and Data1-3 paths support mini SD state machine requirements. A shut-down pin is provided for the level shifters and regulator. The f_CLK_A is a feedback clock to the host which can be used to overcome level shifter bus delay.

The built-in low-dropout voltage regulator is ideal for mobile phone and battery powered wireless applications. It provides up to 200 mA from a 3.05 V to 5.5 V input. It is stable with small 1.0 $\mu F \pm 30\%$ ceramic and high quality tantalum output capacitors, requiring smallest possible PC board area.

The card (B port) side channels have integration of ASIP (Application Specific Integrated Passives) - on chip integrated pull-up, pull-down, series resistors and capacitors for EMC filtering. It is designed to tolerate IEC61000-4-2 level 4 ESD: ± 15 kV air discharge, ± 8 kV direct contact.

Key Specifications

Level Shifter:

- 6-signal Level Shifter (5 bi-directional and 1 uni-direction)
- 3 ns (typ) propagation delay
- Channel-to-channel skew < 1 ns (max)

Low-Dropout Regulator:

- 3.05 V to 5.5 V input range
- 2.85 V at 200 mA
- Fast Turn-On time: 30 μs (typ)
- 110 mV (max) dropout with 200 mA load
- Thermal shutdown at 160°C (typ)

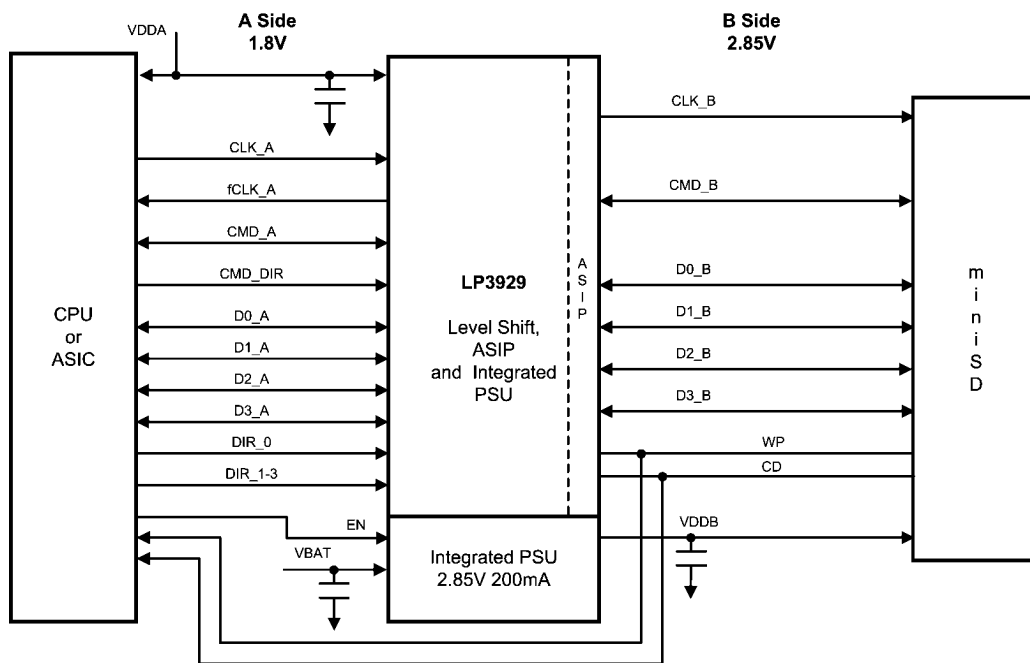
Protection Block (B Side):

- Robust IEC ESD Protection: ± 15 kV Air Gap, ± 8 kV Direct Contact
- ASIP / EMI Filtering

Features

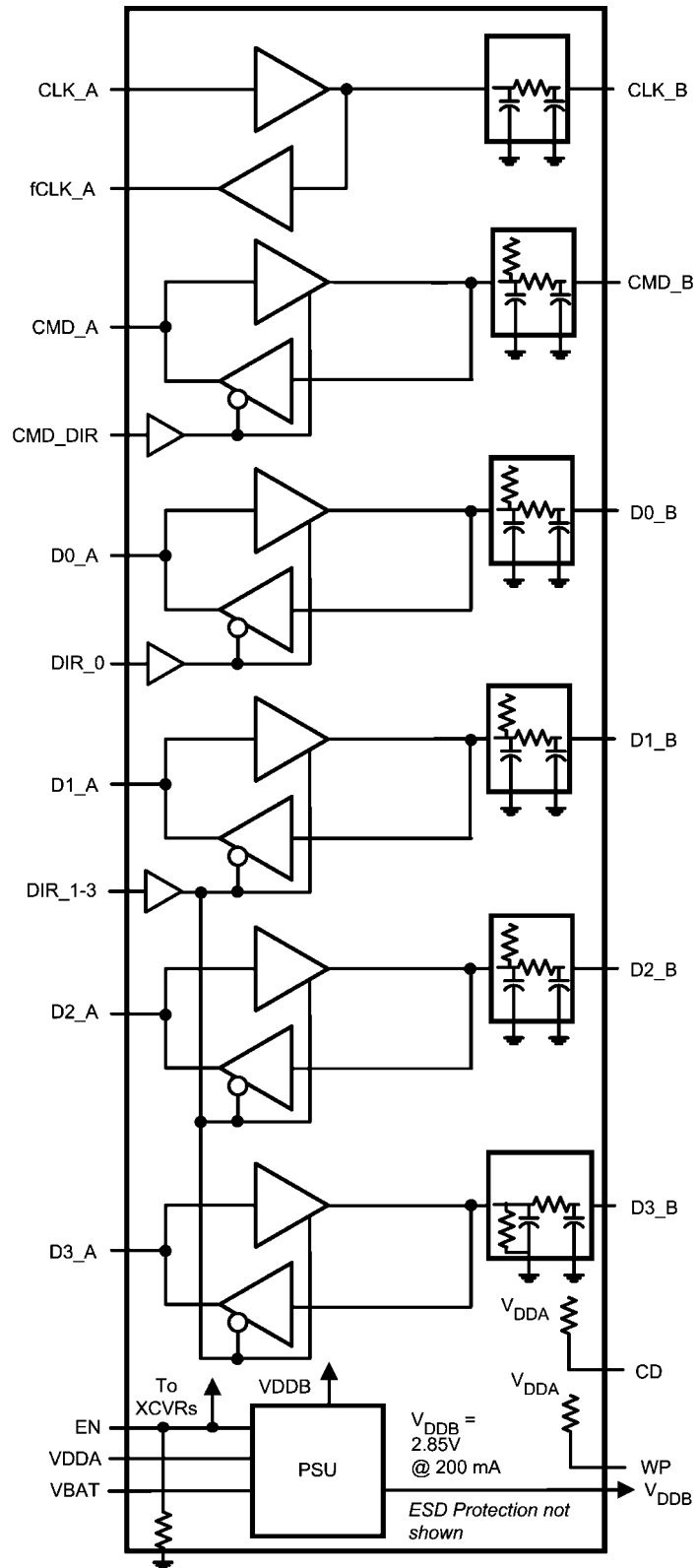
- Ultra small micro SMD 24 bump package
- 6-signal level translation 1.8 V to 2.85 V
- LDO stable with ceramic and high quality tantalum capacitors

Typical Application Circuit



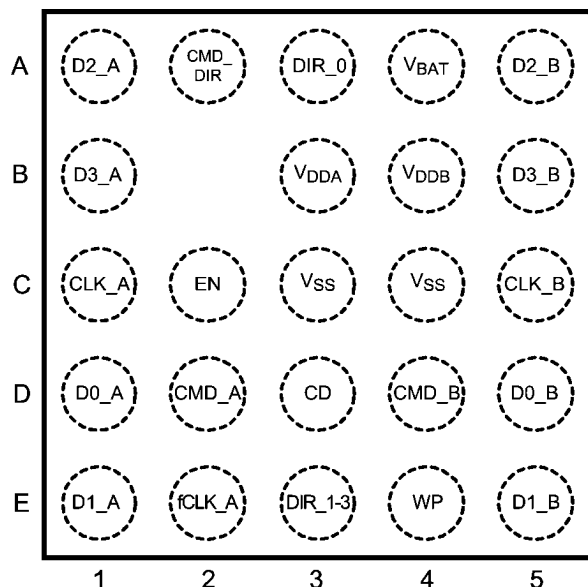
20186801

Block Diagram



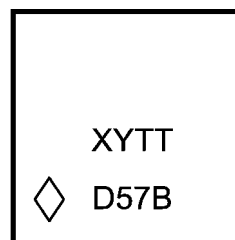
20186802

Package Outline and Connection Diagrams



Top View - Bump Underneath
24 Bump micro SMD Package
See NSC Package Number TME24AAA

20186811



Pin 1 Identifier

20186812

Note: The actual physical placement of the package marking will vary from part to part. The package marking "XY" will designate the date code. The "TT" is a NSC internal code for die traceability; engineering sample parts will be marked as "ES". Both will vary considerably. The pin 1 marking identifier is the location of corner bump A1.

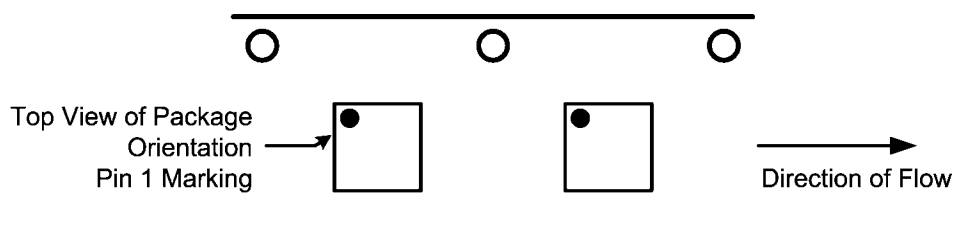
Top View - TME24 Device Marking

Ordering Information

For 24 Bump micro SMD Package

Output Voltage	Grade	LP3929 Supplied As 250 Units, Tape & Reel	LP3929 Supplied As 3000 Units, Tape & Reel
2.85 V	STD	LP3929TME-AACQ	LP3929TMEX-AACQ

Tape and Reel Information



Top View: Tape and Reel Information

20186810

Pin Descriptions

Pin Name	micro SMD Bump Identifier	Port / Direction	Type	Function
D0_A	D1	Host / Bidirectional	Push-Pull	1.8 V I/O Channel (Note 14)
D1_A	E1	Host / Bidirectional	Push-Pull	1.8 V I/O Channel (Note 14)
D2_A	A1	Host / Bidirectional	Push-Pull	1.8 V I/O Channel (Note 14)
D3_A	B1	Host / Bidirectional	Push-Pull	1.8 V I/O Channel (Note 14)
CMD_A	D2	Host / Bidirectional	Push-Pull	1.8 V I/O Channel (Note 14)
CLK_A	C1	Host / Input	High Z	1.8 V Input CLK Channel (Note 14)
fCLK_A	E2	Host / Output	Push-Pull	1.8 V Output CLK Channel
DIR_0	A3	Host / Input	High Z	1.8 V Input Direction Control D0 Channel: $V_{DDA} = A \rightarrow B$ Direction (Write), $V_{SS} = B \rightarrow A$ Direction (Read)
DIR_1-3	E3	Host / Input	High Z	1.8 V Input Direction Control D1-D3 Channel: $V_{DDA} = A \rightarrow B$ Direction (Write), $V_{SS} = B \rightarrow A$ Direction (Read)
CMD_DIR	A2	Host / Input	High Z	1.8 V Input Direction Control CMD Channel: $V_{DDA} = A \rightarrow B$ Direction (Write), $V_{SS} = B \rightarrow A$ Direction (Read)
EN	C2	Host / Input	High Z	Device Enable with high impedance pull-down resistor (200 k Ω): V_{DDA} = Device Active (on), V_{SS} = Device Disabled (off)
D0_B	D5	Card / Bidirectional	Push-Pull	2.85 V I/O Channel with high impedance pull-up to V_{DDB} (70 k Ω)
D1_B	E5	Card / Bidirectional	Push-Pull	2.85 V I/O Channel with high impedance pull-up to V_{DDB} (70 k Ω)
D2_B	A5	Card / Bidirectional	Push-Pull	2.85 V I/O Channel with high impedance pull-up to V_{DDB} (70 k Ω)
D3_B	B5	Card / Bidirectional	Push-Pull	2.85 V I/O Channel with high impedance pull-down to V_{SS} (470 k Ω)
CMD_B	D4	Card / Bidirectional	Push-Pull	2.85 V I/O Channel with high impedance pull-up to V_{DDB} (15 k Ω)
CLK_B	C5	Card / Output	Push-Pull	2.85 V Output CLK Channel
V_{BAT}	A4	Host / Input	Power	3.05 V to 5.5 V
V_{DDA}	B3	Host / Input	Power	1.71 V to 1.92 V, 1.8 V (typ)
V_{DDB}	B4	Card / Output	Power	2.85 V (LDO output)
V_{SS}	C3			Ground
V_{SS}	C4			Ground
WP	E4	Host / Card Input	Pull-up	Pull-up to V_{DDA} (100 k Ω)
CD	D3	Host / Card Input	Pull-up	Pull-up to V_{DDA} (100 k Ω)

TABLE 1. Operation Modes

Inputs				Mode
EN	CMD_DIR	DIR_0	DIR_1-3	
L	X	X	X	Level shifter / LDO = off (Shutdown Mode)
H	L	L	L	All channels (D0-D3 and CMD): B → A Direction
H	L	L	H	A → B Direction: D1-D3, B → A Direction: CMD and D0
H	L	H	L	A → B Direction: D0, B → A Direction: CMD and D1-D3
H	L	H	H	A → B Direction: D0-D3, B → A Direction: CMD
H	H	L	L	A → B Direction: CMD, B → A Direction: D0-D3
H	H	L	H	A → B Direction: CMD and D1-D3, B → A Direction: D0
H	H	H	L	A → B Direction: CMD and D0, B → A Direction: D1-D3
H	H	H	H	All channels (D0-D3 and CMD): A → B Direction

H = V_{DDA} , L = V_{SS}

Absolute Maximum Ratings (Note 1)

If Military/Aerospace specified devices are required, please contact the National Semiconductor Sales Office/Distributors for availability and specifications.

Supply Voltage (V_{BAT})	–0.3V to +6.0V
Supply Voltage (V_{DDA})	–0.3V to +3.3V
LVC MOS A Port Input Voltage	–0.3V to $V_{DDA} + 0.3V$
LVC MOS A Port I/O Voltage	–0.3V to $V_{DDA} + 0.3V$
LVC MOS A Port I/O Voltage	–0.3V to $V_{DDB} + 0.3V$
Junction Temperature	150°C
Storage Temperature	–65°C to +150°C
Lead Temperature (Note 13)	235°C
Pad Temperature (Note 13)	235°C
Derate micro SMD	
Package above 25°C	22.9 mW/°C

Maximum Power Dissipation Capacity at 25°C

micro SMD	2.8 W
ESD Rating	
HBM - MIL-STD-883E 3015.7 std.	± 2kV
MM - JESD22-A115-A std.	± 200V
CDM - 500V (JESD22-C 101) Std.	± 500V
IEC61000-4-2 std., 330Ω, 150pF, Air Gap, B Side (Note 2)	± 15kV
IEC61000-4-2 std., 330Ω, 150pF, Direct Contact, B Side (Note 2)	± 8kV

Operating Conditions

V_{BAT} to V_{SS}	3.05V to 5.5V
V_{DDA} to V_{SS}	1.71V to 1.92V
Ambient Temperature	–30°C to +85°C

Electrical Characteristics Unless otherwise specified: $C_{VBAT} = 1 \mu F$, $I_{OUT} = 1 \text{ mA}$, $C_{VDD} = 1 \mu F$, $C_{VDDA} = 1 \mu F$. Typical values and limits appearing in standard typeface apply for $T_A = 25^\circ\text{C}$. Limits appearing in **boldface type** apply over the entire ambient temperature range for operation, –30°C to +85°C. (Notes 3, 4)

Symbol	Parameter	Conditions		Min	Typ	Max	Units
LVCMOS A (Host) Port (V _{DDA} = 1.71V to 1.92V)							
V _{IH}	Input Voltage High Level			0.65×V _{DDA}		1.92	V
		V _{DDA} = 1.71V		1.1115		1.92	V
		V _{DDA} = 1.92V		1.248		1.92	V
V _{IL}	Input Voltage Low Level			0		0.30×V _{DDA}	V
		V _{DDA} = 1.71V		0		0.513	V
		V _{DDA} = 1.92V		0		0.576	V
I _{IH}	Input Current High Level	V _{IH} = V _{DDA}		–1	0	+1	μA
		EN = V _{SS}		–1	0	+1	μA
		EN = V _{DDA}		–1	0	+10	μA
I _{IL}	Input Current Low Level	V _{IL} = V _{SS}		–1	0	+1	μA
V _{OH}	Output Voltage High Level	I _{OH} = –4 mA		1.26	1.8	V _{DDA}	V
V _{OL}	Output Voltage Low Level	I _{OL} = 4 mA		V _{SS}	0	0.45	V
LVCMOS B (Card) Port (V _{DDB} = 2.85V)							
V _{IH}	Input Voltage High Level			0.65×V _{DDB}		V _{DDB}	V
V _{IL}	Input Voltage Low Level			0		0.35×V _{DDB}	V
I _{IH}	Input Current High Level	V _{IH} = V _{DDB}	D0_B to D2_B	– 2	0.2	+ 2	μA
			D3_B	0	6.5	+ 13	μA
			CMD_B	– 5	0.3	+ 5	μA
I _{IL}	Input Current Low Level	V _{IL} = V _{SS}	D0_B to D2_B	– 80	–40	0	μA
			D3_B	– 1	0.1	+ 1	μA
			CMD_B	– 300	– 200	– 20	μA
IOS +	Short Circuit Current	V _{OUTlow} = V _{DDB}			45		μA
IOS –		V _{OUThigh} = V _{SS}			– 20		μA
V _{OH}	Output Voltage High Level	I _{OH} = – 2 mA		0.75×V _{DDB}			V
V _{OL}	Output Voltage Low Level	I _{OL} = 2 mA				0.25×V _{DDB}	V

Electrical Characteristics

Unless otherwise specified: $C_{VBAT} = 1 \mu F$, $I_{OUT} = 1 \text{ mA}$, $C_{VDDB} = 1 \mu F$, $C_{VDDA} = 1 \mu F$. Typical values and limits appearing in standard typeface apply for $T_A = 25^\circ\text{C}$. Limits appearing in **boldface type** apply over the entire ambient temperature range for operation, -30°C to $+85^\circ\text{C}$. (Notes 3, 4)

Symbol	Parameter	Conditions	Min	Typ	Max	Units
Supply Current						
I_{DD}	Supply Current	All Channels Static: A \rightarrow B mode, LDO unloaded	V_{BAT}		4	7 mA
			V_{DDA}		95	200 μA
I_{DDZ}	Supply Current — Shutdown	$EN = V_{SS}$	V_{BAT}		0.1	2 μA
			V_{DDA}		0.2	2 μA
C_{OUT}	Output Capacitance (Note 15)	B (card) port		15	20	pF

Level Shifter AC Switching Characteristics

Unless otherwise specified: $C_{VBAT} = 1 \mu F$, $I_{OUT} = 1 \text{ mA}$, $C_{VDDB} = 1 \mu F$, $C_{VDDA} = 1 \mu F$. Typical values and limits appearing in standard typeface apply for $T_A = 25^\circ\text{C}$. Limits appearing in **boldface type** apply over the entire ambient temperature range for operation, -30°C to $+85^\circ\text{C}$. (Notes 3, 5, 15, 16)

Symbol	Parameter	Conditions	Min	Typ	Max	Units
t_{PLH}	Propagation Delay A to B or B to A	$C_{LB} = 15 \text{ pF}$, $C_{LA} = 20 \text{ pF}$, 50%-50%		3	7	ns
	Propagation Delay CLK_A to fCLK_A	$C_{LA} = 20 \text{ pF}$, 50%-50%		5	14	ns
t_{PHL}	Propagation Delay A to B or B to A	$C_{LB} = 15 \text{ pF}$, $C_{LA} = 20 \text{ pF}$, 50%-50%		3	7	ns
	Propagation Delay CLK_A to fCLK_A	$C_{LA} = 20 \text{ pF}$, 50%-50%		5	14	ns
t_{RISE}	Rise Time A Side Output <i>Figure 2</i>	$C_{LA} = 20 \text{ pF}$, 20%-70%		1.1	3	ns
	Rise Time B Side Output with ASIP <i>Figure 2</i>	$C_{LB} = 15 \text{ pF}$, 20%-70%		1.6	3	ns
t_{FALL}	Fall Time A Side Output <i>Figure 2</i>	$C_{LA} = 20 \text{ pF}$, 20%-70%		1.0	3	ns
	Fall Time B Side Output with ASIP <i>Figure 2</i>	$C_{LB} = 15 \text{ pF}$, 20%-70%		1.9	3	ns
t_{SKEW}	Skew between D0–D3, CLK and CMD outputs (either edge)			<0.5	1.0	ns
t_{EN}	Enable Time			30	200	μs
t_{DIS}	Disable Time			18	50	ns
t_{TA}	Level-Shifter Direction Switch Response (Turn Around) Time			13	20	ns

LDO Electrical Characteristics

Unless otherwise specified: $C_{VBAT} = 1 \mu F$, $I_{OUT} = 1 \text{ mA}$, $C_{VDDB} = 1 \mu F$, $C_{VDDA} = 1 \mu F$. Typical values and limits appearing in standard typeface apply for $T_A = 25^\circ\text{C}$. Limits appearing in **boldface type** apply over the entire ambient temperature range for operation, -30°C to $+85^\circ\text{C}$. (Note 3)

Symbol	Parameter	Conditions	Min	Typ	Max	Units
V_{OUT}	Output Voltage, $V_{OUT} = V_{DDB}$	$I_{OUT} = 200 \text{ mA}$, $V_{BAT} = 3.05 \text{ V}$ to 5.5 V	2.76	2.85	2.93	V
ΔV_{OUT}	Output Voltage Tolerance	$I_{OUT} = 1 \text{ mA}$	-2 -3		2 3	% of $V_{OUT(nom)}$
	Line Regulation Error (Note 6)	$V_{BAT} = (V_{OUT(nom)} + 0.5 \text{ V})$ to 5.5 V , $I_{OUT} = 1 \text{ mA}$	-0.15		0.15	%/V
	Load Regulation Error (Note 7)	$I_{OUT} = 1 \text{ mA}$ to 200 mA	-0.01		0.01	%/mA
	Output AC Line Regulation	$V_{BAT} = V_{OUT(nom)} + 1 \text{ V}$, $I_{OUT} = 100 \text{ mA}$, $C_{OUT} = 1.0 \mu F$		1.5		mV _{PP}
PSRR	Power Supply Rejection Ratio (Note 15)	$V_{BAT} = V_{OUT(nom)} + 1 \text{ V}$, $f = 1 \text{ kHz}$, $I_{OUT} = 50 \text{ mA}$		40		dB
		$V_{BAT} = V_{OUT(nom)} + 1 \text{ V}$, $f = 10 \text{ kHz}$, $I_{OUT} = 50 \text{ mA}$		30		
ΔV_{DO}	Dropout Voltage (Note 8)	$I_{OUT} = 1 \text{ mA}$		1		mV
		$I_{OUT} = 50 \text{ mA}$		20		
		$I_{OUT} = 100 \text{ mA}$		35		
		$I_{OUT} = 200 \text{ mA}$		60	110	
I_{SC}	Short Circuit Current Limit	$V_{BAT} = 5.5 \text{ V}$, Output Grounded (Steady State)		750		mA
T_{ON}	Turn-On Time (Notes 9, 15)			30	200	μs
$p_n (1/f)$	Output Noise Density	$f = 1 \text{ kHz}$, $C_{OUT} = 1.0 \mu F$		0.6		$\mu V/\sqrt{\text{Hz}}$
e_n	Output Noise Voltage	$BW = 10 \text{ Hz}$ to 100 kHz , $C_{OUT} = 1.0 \mu F$		45		μV_{rms}
Output Capacitor	Output Filter Capacitance (Note 10)	$V_{BAT} = 3.05 \text{ V}$ to 5.5 V , $I_{OUT} = 1 \text{ mA}$ to 200 mA	0.7	1.0	22	μF
	Output Filter Capacitance ESR (Note 11)	$V_{BAT} = 3.05 \text{ V}$ to 5.5 V , $I_{OUT} = 1 \text{ mA}$ to 200 mA	5		500	m Ω
Thermal Shutdown	Thermal Shutdown Temperature (Notes 12, 15)	$V_{BAT} = 3.05 \text{ V}$ to 5.5 V , $I_{OUT} = 1 \text{ mA}$ to 200 mA		160		$^\circ\text{C}$
	Thermal Shutdown Hysteresis (Note 15)			20		$^\circ\text{C}$

Note 1: "Absolute Maximum Ratings" are those values beyond which the safety of the device cannot be guaranteed. They are not meant to imply that the device should be operated at these limits. The tables of "Electrical Characteristics" specify conditions for device operation.

Note 2: IEC61000-4-2 level 4 ESD tolerance applies to V_{DDB}, D0_B–D3_B, CMD_B, CLK_B, WP and CP pins only. Device is tested in application (common ground, bypass capacitors of 1.0 μF present on V_{BAT}, V_{DDB} and V_{DDB}).

Note 3: Typical values are given for V_{DDB} = 1.8V, V_{BAT} = 3.6V, T_A = 25°C

Note 4: Current into device pins is defined as positive. Current out of device pins is defined as negative. Voltages are reference to ground unless otherwise specified.

Note 5: Input signal for test purpose is defined as: A side – 0V to 1.8V with 2ns rise time (20%-70%) and B side – 0V to 2.85V with 2ns rise time (20%-70%)

Note 6: The output voltage changes slightly with line voltage. An increase in the line voltage results in a slight increase in the output voltage and vice versa.

Note 7: The output voltage changes slightly with load current. An increase in the load current results in a slight decrease in the output voltage and vice versa.

Note 8: Dropout voltage is the input-to-output voltage difference at which the output voltage is 100 mV below its nominal value. This specification does not apply for input voltages below 2.7V.

Note 9: Turn-on time is that between when the enable input is high and the output voltage just reaching 95% of its nominal value.

Note 10: Range of capacitor value for which the device will remain stable. This electrical specification is guaranteed by design.

Note 11: Range of capacitor ESR values for which the device will remain stable. This electrical specification is guaranteed by design.

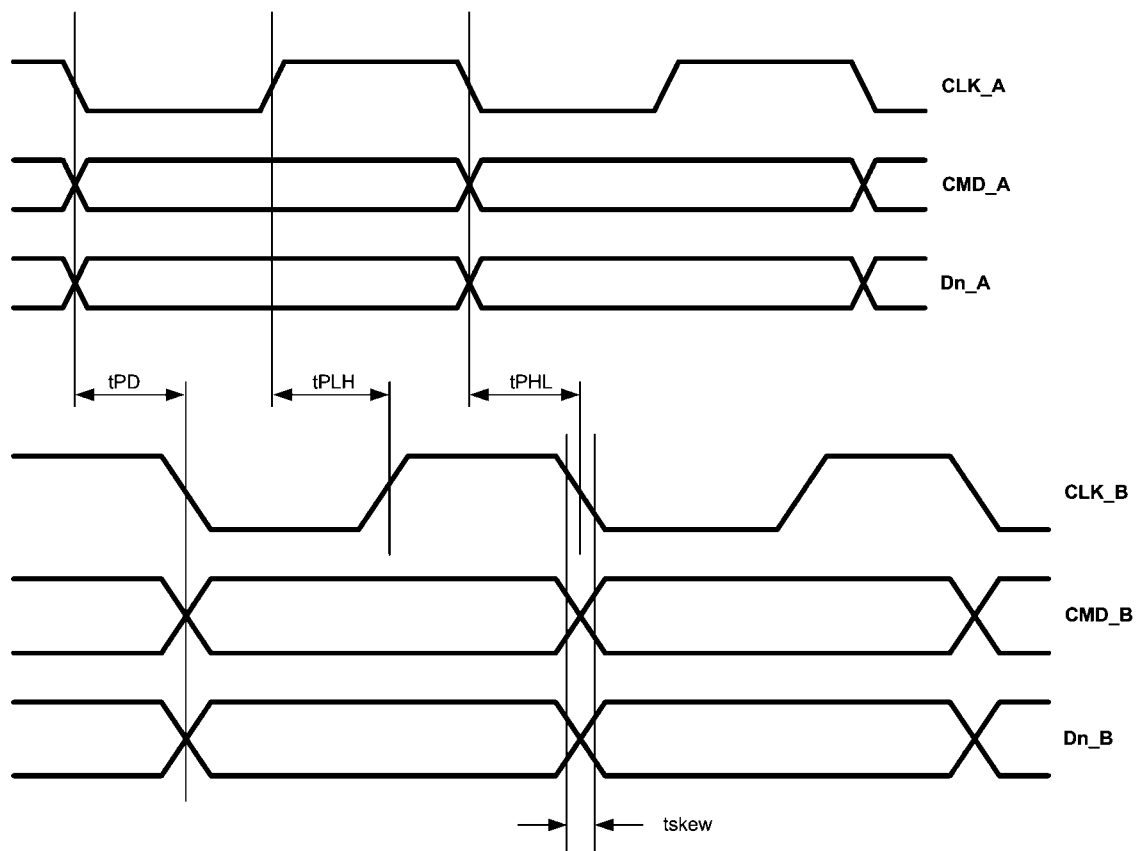
Note 12: The built-in thermal shut-down of the LDO is also used to put all A and B outputs in tri-state mode.

Note 13: Additional information on lead temperature and pad temperature can be found in National Semiconductor Application Note (AN-1112).

Note 14: Unused inputs must be terminated.

Note 15: This electrical specification is guaranteed by design.

Note 16: The SD/MMC card specification calls for a total of 30 pF capacitance. A load of 15 pF is internal to the LP3929, so the external load capacitance on the B side should comprise the remaining (15 pF or less).



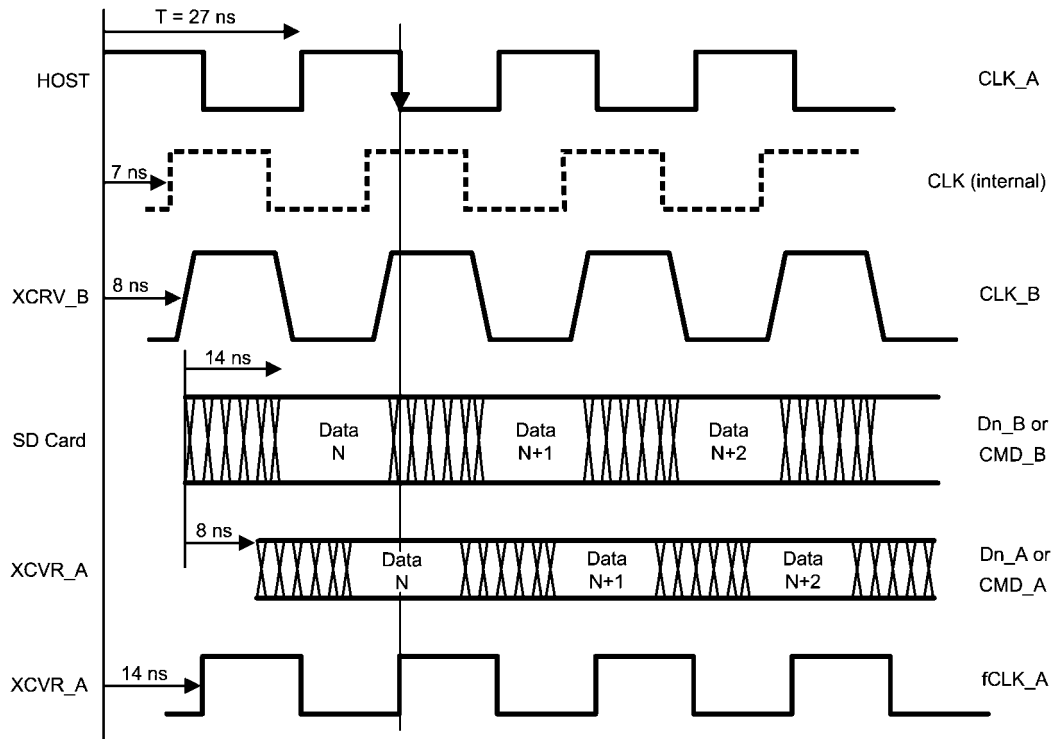
20186805

FIGURE 1. A to B Timing Diagram (propagation delay, skew)



20186806

FIGURE 2. Output Transition Time (A and B Side)

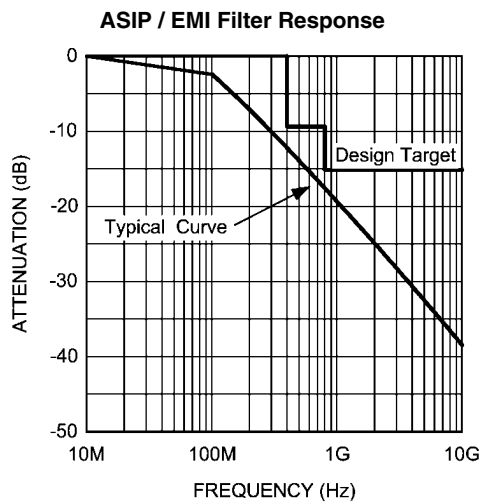


20186807

FIGURE 3. B to A Direction (37 MHz Example)

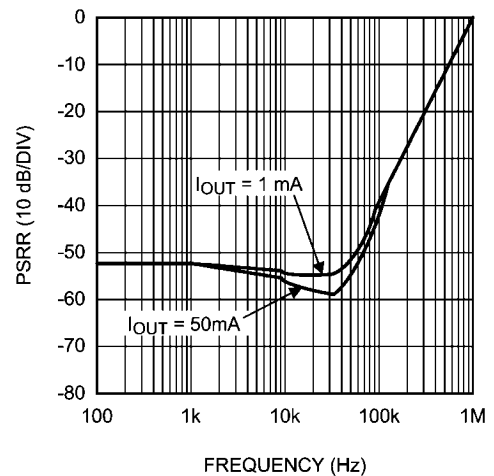
Typical Performance Characteristics

Unless otherwise specified: $C_{VBAT} = 1 \mu\text{F}$, $C_{VDDA} = 1 \mu\text{F}$, $C_{VDDb} = 1 \mu\text{F}$, $V_{BAT} = 3.85 \text{ V}$, $V_{DDA} = 1.8 \text{ V}$, $T_A = 25^\circ\text{C}$.



20186809

Power Supply Rejection Ratio ($V_{BAT} = 3.85\text{V}$)



20186808

Application Information

EXTERNAL CAPACITORS

Like any low-dropout regulator, the LP3929 requires external capacitors for regulator stability. The LP3929 is specifically designed for portable applications requiring minimum board space and smallest components. These capacitors must be correctly selected for good performance.

INPUT CAPACITOR

An input capacitance of 1 μF is required between the LP3929 V_{BAT} pin and ground (the amount of the capacitance may be increased without limit).

This capacitor must be located a distance of not more than 1 cm from the V_{BAT} pin and returned to a clean analog ground. Any good quality ceramic, tantalum, or film capacitor may be used at the input.

Important: Tantalum capacitors can suffer catastrophic failures due to surge current when connected to a low-impedance source of power (like a battery or a very large capacitor). If a tantalum capacitor is used at the input, it must be guaranteed by the manufacturer to have a surge current rating sufficient for the application.

There are no requirements for the ESR on the input capacitor, but tolerance, bias voltage and temperature coefficient must be considered when selecting the capacitor to ensure the capacitance will be 1 μF over the entire operating conditions.

FAST ON-TIME

The LP3929 utilizes a speed up circuitry to ramp up the internal V_{REF} voltage to its final value to achieve a fast output turn on time.

CAPACITOR CHARACTERISTICS

The LP3929 is designed to work with ceramic capacitors on the output to take advantage of the benefits they offer: for capacitance values in the range of 1 μF to 4.7 μF range, ceramic capacitors are the smallest, least expensive and have the lowest ESR values (which makes them best for eliminating high frequency noise). The ESR of a typical 1 μF ceramic capacitor is in the range of 20 m Ω to 40 m Ω , which easily meets the ESR requirement for stability by the LP3929.

The ceramic capacitor's capacitance can vary with temperature.

Most large value ceramic capacitors (2.2 μF) are manufactured with Z5U or Y5V temperature characteristics, which results in the capacitance dropping by more than 50% as the temperature goes from 25°C to 85°C.

A better choice for temperature coefficient in ceramic capacitor is X7R, which holds the capacitance within $\pm 15\%$.

Tantalum capacitors are less desirable than ceramic for use as output capacitors because they are more expensive when comparing equivalent capacitance and voltage ratings in the 1 μF to 4.7 μF range.

Another important consideration is that tantalum capacitors have higher ESR values than equivalent size ceramics. This means that while it may be possible to find a tantalum capacitor with an ESR value within the stable range, it would have to be larger in capacitance (which means bigger and more costly) than a ceramic capacitor with the same ESR value. It should also be noted that the ESR of a typical tantalum will increase about 2:1 as the temperature goes from 25°C down to -40°C, so some guard band must be allowed.

OUTPUT CAPACITOR

The LP3929 is designed specifically to work with very small ceramic output capacitors, any ceramic capacitor (dielectric types Z5U, Y5V or X7R) in 1.0 μF to 2.2 μF range with 5 m Ω to 500 m Ω ESR range is suitable in the LP3929 application circuit.

It may also be possible to use tantalum or film capacitors at the output, but these are not as attractive for reasons of size and cost (see section Capacitor Characteristics).

The output capacitor must meet the requirement for minimum amount of capacitance and also have an ESR (Equivalent Series Resistance) value which is within a stable range.

The output capacitor should be placed as near as possible to the V_{DDB} pin.

NO-LOAD STABILITY

The LDO of the LP3929 will remain stable and in regulation with no external load connected to the LDO output V_{DDB} . This is especially important in CMOS RAM keep-alive applications.

MICRO SMD ASSEMBLY

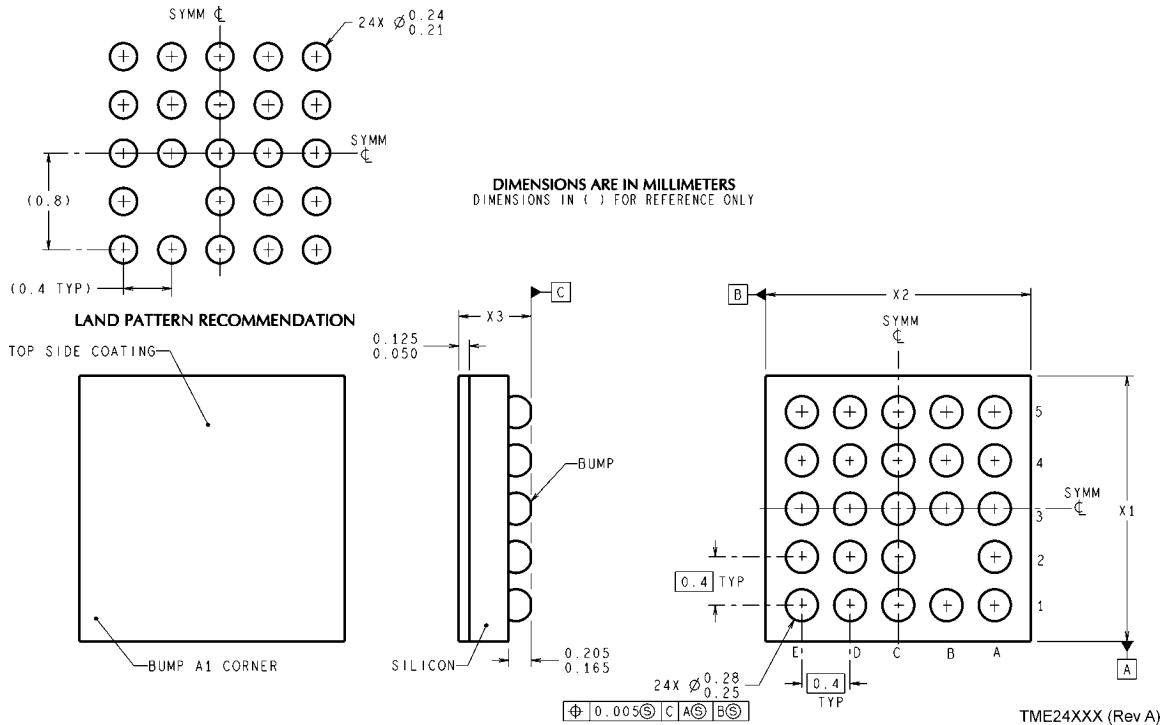
For assembly recommendations of micro SMD package please refer to National Semiconductor Application Note AN-1112.

MICRO SMD LIGHT SENSITIVITY

Exposing the micro SMD device to direct sunlight will cause misoperation of the device. Light sources such as Halogen lamps can effect electrical performance if brought near to the device.

The wavelengths which have most detrimental effect are reds and infra-reds, which means that the fluorescent lighting used inside most buildings has very little effect on performance.

Physical Dimensions inches (millimeters) unless otherwise noted



micro SMD, 24 Bump
NS Package Number: TME24AAA
The dimensions for X1, X2 and X3 are as follows:
X1 = 2.015mm \pm 30 μ m
X2 = 2.015mm \pm 30 μ m
X3 = 0.600mm \pm 75 μ m

Notes

Notes

For more National Semiconductor product information and proven design tools, visit the following Web sites at:

Products		Design Support	
Amplifiers	www.national.com/amplifiers	WEBENCH	www.national.com/webench
Audio	www.national.com/audio	Analog University	www.national.com/AU
Clock Conditioners	www.national.com/timing	App Notes	www.national.com/appnotes
Data Converters	www.national.com/adc	Distributors	www.national.com/contacts
Displays	www.national.com/displays	Green Compliance	www.national.com/quality/green
Ethernet	www.national.com/ethernet	Packaging	www.national.com/packaging
Interface	www.national.com/interface	Quality and Reliability	www.national.com/quality
LVDS	www.national.com/lvds	Reference Designs	www.national.com/refdesigns
Power Management	www.national.com/power	Feedback	www.national.com/feedback
Switching Regulators	www.national.com/switchers		
LDOs	www.national.com/ldo		
LED Lighting	www.national.com/led		
PowerWise	www.national.com/powerwise		
Serial Digital Interface (SDI)	www.national.com/sdi		
Temperature Sensors	www.national.com/tempsensors		
Wireless (PLL/VCO)	www.national.com/wireless		

THE CONTENTS OF THIS DOCUMENT ARE PROVIDED IN CONNECTION WITH NATIONAL SEMICONDUCTOR CORPORATION ("NATIONAL") PRODUCTS. NATIONAL MAKES NO REPRESENTATIONS OR WARRANTIES WITH RESPECT TO THE ACCURACY OR COMPLETENESS OF THE CONTENTS OF THIS PUBLICATION AND RESERVES THE RIGHT TO MAKE CHANGES TO SPECIFICATIONS AND PRODUCT DESCRIPTIONS AT ANY TIME WITHOUT NOTICE. NO LICENSE, WHETHER EXPRESS, IMPLIED, ARISING BY ESTOPPEL OR OTHERWISE, TO ANY INTELLECTUAL PROPERTY RIGHTS IS GRANTED BY THIS DOCUMENT.

TESTING AND OTHER QUALITY CONTROLS ARE USED TO THE EXTENT NATIONAL DEEMS NECESSARY TO SUPPORT NATIONAL'S PRODUCT WARRANTY. EXCEPT WHERE MANDATED BY GOVERNMENT REQUIREMENTS, TESTING OF ALL PARAMETERS OF EACH PRODUCT IS NOT NECESSARILY PERFORMED. NATIONAL ASSUMES NO LIABILITY FOR APPLICATIONS ASSISTANCE OR BUYER PRODUCT DESIGN. BUYERS ARE RESPONSIBLE FOR THEIR PRODUCTS AND APPLICATIONS USING NATIONAL COMPONENTS. PRIOR TO USING OR DISTRIBUTING ANY PRODUCTS THAT INCLUDE NATIONAL COMPONENTS, BUYERS SHOULD PROVIDE ADEQUATE DESIGN, TESTING AND OPERATING SAFEGUARDS.

EXCEPT AS PROVIDED IN NATIONAL'S TERMS AND CONDITIONS OF SALE FOR SUCH PRODUCTS, NATIONAL ASSUMES NO LIABILITY WHATSOEVER, AND NATIONAL DISCLAIMS ANY EXPRESS OR IMPLIED WARRANTY RELATING TO THE SALE AND/OR USE OF NATIONAL PRODUCTS INCLUDING LIABILITY OR WARRANTIES RELATING TO FITNESS FOR A PARTICULAR PURPOSE, MERCHANTABILITY, OR INFRINGEMENT OF ANY PATENT, COPYRIGHT OR OTHER INTELLECTUAL PROPERTY RIGHT.

LIFE SUPPORT POLICY

NATIONAL'S PRODUCTS ARE NOT AUTHORIZED FOR USE AS CRITICAL COMPONENTS IN LIFE SUPPORT DEVICES OR SYSTEMS WITHOUT THE EXPRESS PRIOR WRITTEN APPROVAL OF THE CHIEF EXECUTIVE OFFICER AND GENERAL COUNSEL OF NATIONAL SEMICONDUCTOR CORPORATION. As used herein:

Life support devices or systems are devices which (a) are intended for surgical implant into the body, or (b) support or sustain life and whose failure to perform when properly used in accordance with instructions for use provided in the labeling can be reasonably expected to result in a significant injury to the user. A critical component is any component in a life support device or system whose failure to perform can be reasonably expected to cause the failure of the life support device or system or to affect its safety or effectiveness.

National Semiconductor and the National Semiconductor logo are registered trademarks of National Semiconductor Corporation. All other brand or product names may be trademarks or registered trademarks of their respective holders.

Copyright© 2007 National Semiconductor Corporation

For the most current product information visit us at www.national.com



**National Semiconductor
Americas Customer
Support Center**
Email:
new.feedback@nsc.com
Tel: 1-800-272-9959

**National Semiconductor Europe
Customer Support Center**
Fax: +49 (0) 180-530-85-86
Email: europe.support@nsc.com
Deutsch Tel: +49 (0) 69 9508 6208
English Tel: +49 (0) 870 24 0 2171
Français Tel: +33 (0) 1 41 91 8790

**National Semiconductor Asia
Pacific Customer Support Center**
Email: ap.support@nsc.com

**National Semiconductor Japan
Customer Support Center**
Fax: 81-3-5639-7507
Email: jpn.feedback@nsc.com
Tel: 81-3-5639-7560