

# KSC-ST Series

## Sound tuneable Tact Switch

### Features/Benefits

- Positive tactile feeling
- Range of 2 sound intensity
- J or G terminations
- Tape & reel
- IP 67

### Typical Applications

- Automotive
- Industrial electronics
- Keyboards
- Medical equipment



### Specification

FUNCTION: momentary action  
CONTACT ARRANGEMENT: 1 make contact = SPST, N.O.  
TERMINALS: J bend & Gullwing type for SMT

### Environmental

	Silver	Gold
OPERATING TEMPERATURE	-40°C to 85°C	-40°C to 125°C
STORAGE TEMPERATURE:	-55°C to 85°C	-55°C to 125°C

### Mechanical

Type	Sound intensity*	Force (N)	Travel (mm)
KSC441J ST1 LFS	>50dBA	3.4+/-1N	0.70+/-0.25
KSC441J ST2 LFS	<30dBA	3.4+/- 1N	0.35+/-0.20

(\*): Sound intensity is given as reference, switch isolated, outside any additive part such as PCB, button... The sound intensity after product integration may change according the surrounding parts.

For other features, please refer to KSC Series data sheet.

### Process

SOLDERING: Depending on the application, this component is suited to the following methods:  
– Cleaning according to typical washing processes.  
– Infrared Reflow Soldering in accordance with IEC61760-1

### Packaging

In reels of 1,000 pieces.  
Dimensions of reels according to EIA RS481 or IEC 2863.  
External diameter 330 mm ± 2 mm.

**NOTE:** Specifications listed above are for switches with standard options.  
For information on specific and custom switches, consult Customer Service Center.

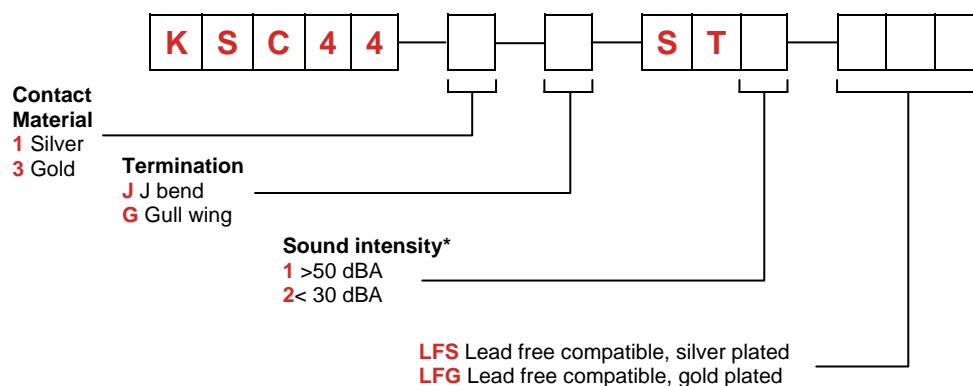
### Electrical

	Silver	Gold
MAXIMUM POWER:	1 VA	0.2 VA
MAXIMUM VOLTAGE :	32 VDC	32 VDC
MINIMUM VOLTAGE:	20 mV	20 mV
MAXIMUM CURRENT:	50 mA	10 mA
MINIMUM CURRENT:	1 mA	1 mA
DIELECTRIC STRENGTH (50 Hz, 1 min.):	250 V	
CONTACT RESISTANCE:	< 100 mΩ	
INSULATION RESISTANCE (100 V):	> 10 <sup>9</sup> Ω	
BOUNCE TIME:	< 1 ms	

### How To Order

Our easy build-a-switch concept allows you to mix and match options to create the switch you need. To order, select desired option from each category and place it in the appropriate box.

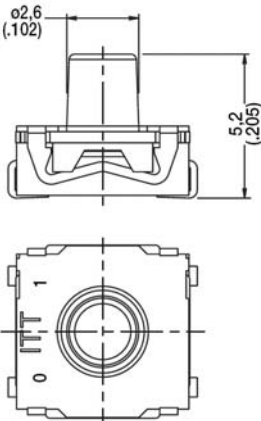
**For any part number different from those listed above, please consult your local ITT representative.**



# KSC-ST Series

## Sound tuneable Tact Switch

ACTUATOR

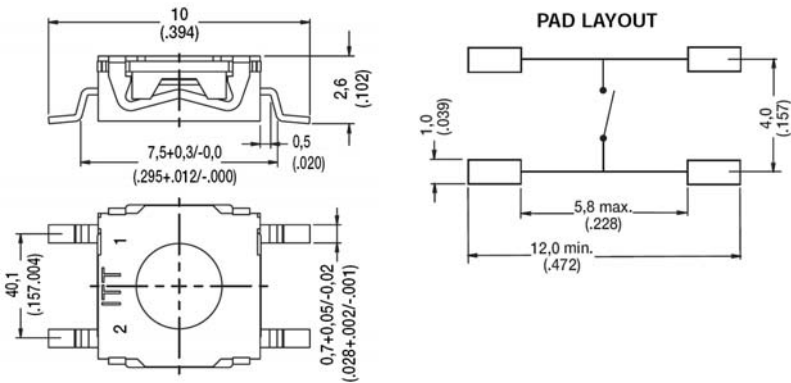


CONTACT MATERIAL

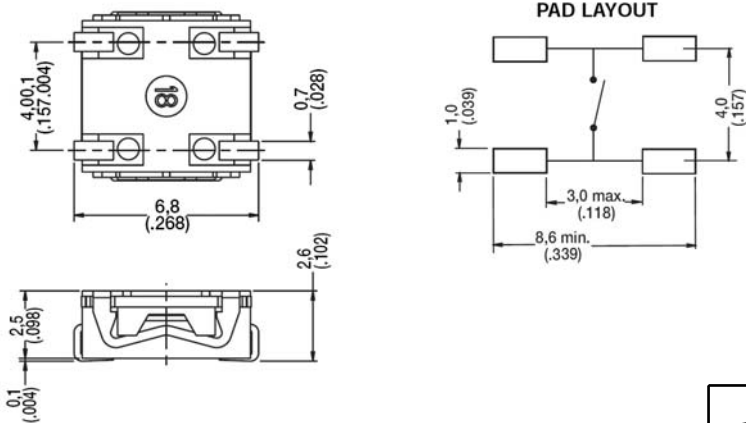
OPTION CODE	MATERIAL
1	SILVER
3	GOLD

CONTACT TERMINATION

**G** GULLWING



**J** J BEND



# KSC-ST Series

## Sound tuneable Tact Switch

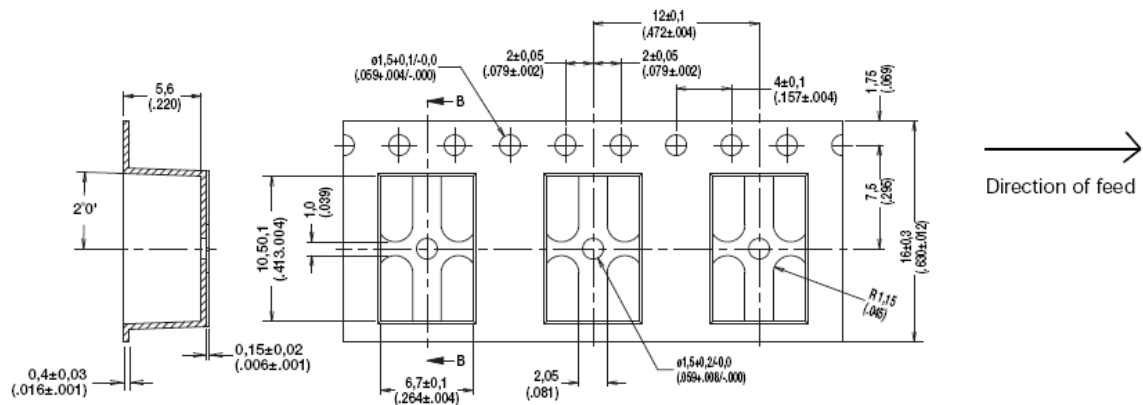
SOUND LEVEL



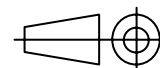
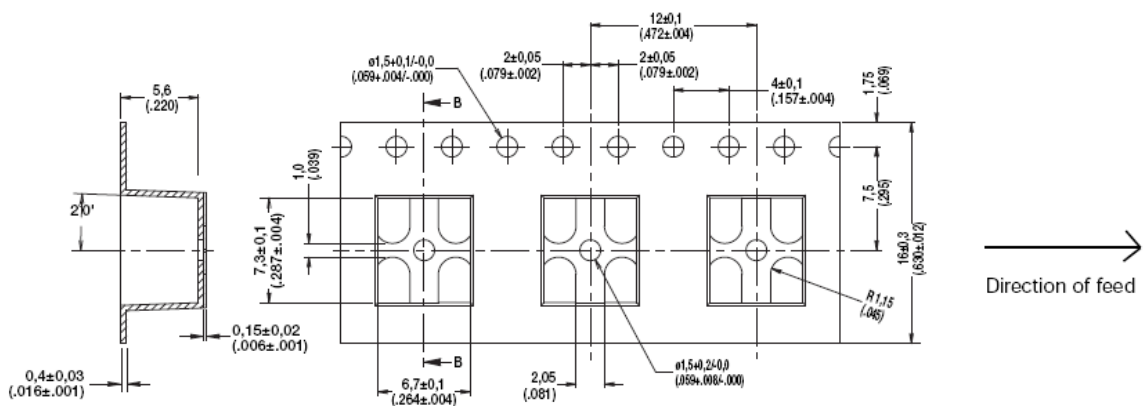
OPTION CODE	MATERIAL
ST1	>50dBA
ST2	<30dBA

TAPE & REEL

FOR KSC4 FOR G TERMINATION



FOR KSC4 FOR J TERMINATION



First Angle  
projection

Dimensions shown in: mm (inch)  
Specifications and dimensions subject to change

[www.ck-components.com](http://www.ck-components.com)