

JW-XX-XX-XX-X-XXX-XXX-XX-X

No OF POSITIONS
-02 THRU -24

LEAD STYLE

[R] -04: T-1S8-05-X
-05: T-1S8-05-X

PLATING SPECIFICATION

-T: TIN (USE T-1S8-05-T)
-TM: MATTE TIN (USE T-1S8-05-T)

OPTION

-P: PICK & PLACE PAD
(USE PPP-47, SEE FIG. 2, SHEET 2)
-VS ONLY, 3 POSITION MIN,
.275[6.99] MIN POST HEIGHT

OPTION

-VS: VERTICAL SURFACE MOUNT

POST HEIGHT

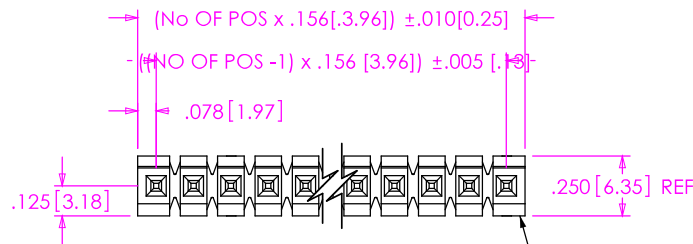
-XXX: SPECIFY POST HEIGHT
.000 MIN (SEE NOTE 3)

SPACE OPTION

-XXX: SPECIFY BOARD SPACING

ROW SPECIFICATION

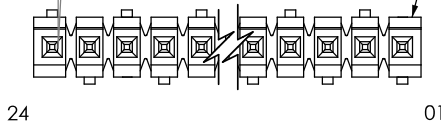
-S: SINGLE (USE HFWJ-24-156)



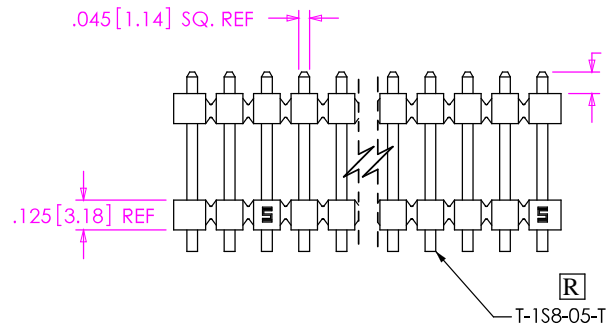
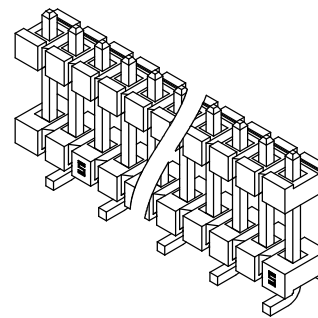
-S: SINGLE

HFWJ-24-156

2° MAX SWAY
(EITHER DIRECTION)



-VS: VERTICAL SURFACE MOUNT

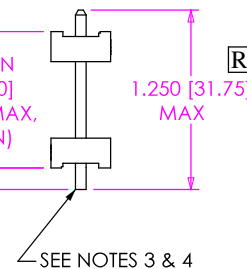


[C1]

POST HEIGHT
-XXX ±.008[0.20]
(.000 MIN)

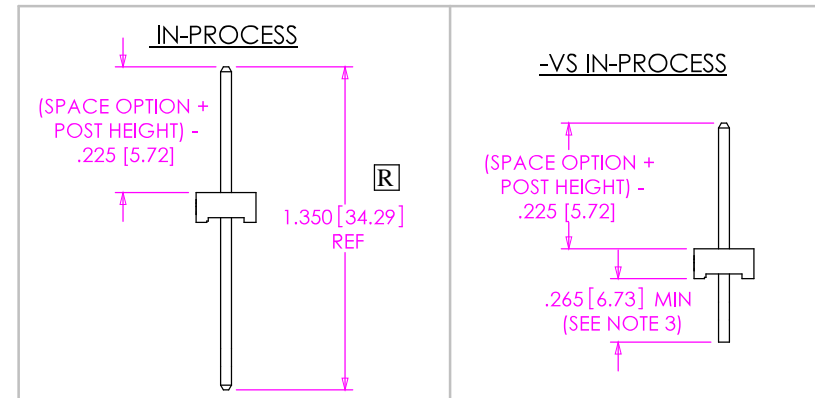
[R] SPACE OPTION
-XXX ±.008[0.20]
(1.080[27.43] MAX,
.250[6.35] MIN)

.09[2.29]



-S: SINGLE

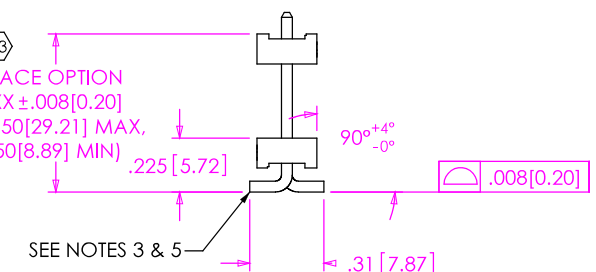
SEE NOTES 3 & 4



[C3]

SPACE OPTION
-XXX ±.008[0.20]
(1.150[29.21] MAX,
.350[8.89] MIN)

SEE NOTES 3 & 5



-VS: VERTICAL SURFACE MOUNT

NOTES:

1. HEIGHT VARIATION BETWEEN ANY TWO PINS SHALL BE .010[0.25] MAX.
2. MAXIMUM PIN ROTATION IN BODY: 2°.
3. TAIL TO BE SHEARED TO .265[6.73] MIN. A SECOND SHEAR STEP WILL BE NEEDED AFTER FORMING TO ACHIEVE THE TAIL TO TAIL DIM.
4. MAXIMUM BURR ALLOWED: .004[0.10].
5. MAXIMUM BURR ALLOWED: .0015[0.038].
6. THROUGH HOLE TO BE BULK PACKAGED.
7. VERTICAL SURFACE MOUNT (-VS) TO BE PACKAGED AS FOLLOWS:
POSITIONS -04 THRU -24 ARE TO BE PACKAGED IN TUBES (SEE TABLE 1, SHEET 2);
POSITIONS -02 AND -03 ARE TO BE LAYER PACKAGED.
8. MIN PUSHOUT FORCE TO BE 3 LBS.
9. MAX CUT FLASH TO BE .020[0.51].
10. **[C]** REPRESENTS A CRITICAL DIMENSION.

UNLESS OTHERWISE SPECIFIED,
DIMENSIONS ARE IN INCHES.

TOLERANCES ARE:

DECIMALS ANGLES
.XX: ±.01 [.3] 2°
.XXX: ±.005 [.13]
.XXXX: ±.0020 [.051]

PROPRIETARY NOTE

THIS DOCUMENT CONTAINS INFORMATION
CONFIDENTIAL AND PROPRIETARY TO
SAMTEC, INC. AND SHALL NOT BE REPRODUCED
OR TRANSFERRED TO OTHER DOCUMENTS OR
DISCLOSED TO OTHERS OR USED FOR ANY
PURPOSE OTHER THAN THAT WHICH IT WAS
OBTAINED WITHOUT THE EXPRESSED WRITTEN
CONSENT OF SAMTEC, INC.

MATERIAL:

DO NOT SCALE DRAWING

SHEET SCALE: 1:25:1

INSULATOR: LCP, COLOR: NATURAL
TERMINAL: PHOSPHOR BRONZE

MAX BOW ALLOWED: .002[0.05] IN/IN

c:\enterprise\vault\DWG\MISC\MKTG\JW-XX-XX-XX-X-XXX-XXX-XX-X-MKT.SLDDRW

samtec

520 PARK EAST BLVD, NEW ALBANY, IN 47150
PHONE: 812-944-6733 FAX: 812-948-5047
e-Mail: info@SAMTEC.com code: 55322

DESCRIPTION:

.156[3.96] POWER STACKER ASSEMBLY

DWG. NO.

JW-XX-XX-XX-X-XXX-XXX-XX-X

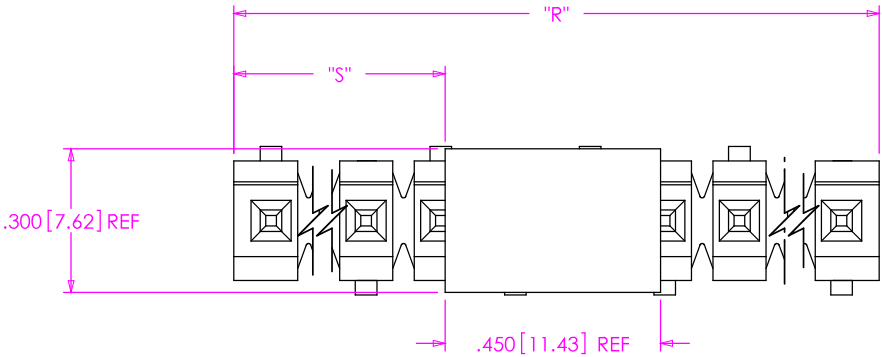
BY: KEVIN B

06/12/2002

SHEET 1 OF 2

FIG. 2

-P: PICK & PLACE PAD OPTION
(-VS ONLY, 3 POS. MIN)



NOTE:
"R" = No OF POS x .156[3.96] REF
"S" = {("R" - .450[11.43]) / 2} ±.020[12.90]
"G" = POST HEIGHT (.275[6.99] MIN) + .050[1.27] REF

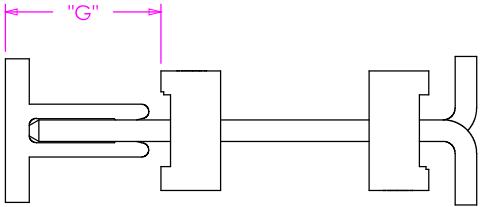


TABLE 1 (SEE NOTE 7)		
SPACE OPTION + POST HEIGHT	PACKAGING TUBE	PLUG
.350 TO .725 [8.89 TO 18.42]	PT-1-24-16-29	TP-07
.726 TO .890 [18.44 TO 22.61]	PT-1-24-01-67	TP-13
.891 TO .1.080 [22.61 TO 27.43]	PT-HPW001-P	TP-26

R

PROPRIETARY NOTE
THIS DOCUMENT CONTAINS INFORMATION
CONFIDENTIAL AND PROPRIETARY TO
SAMTEC, INC. AND SHALL NOT BE REPRODUCED
OR TRANSFERRED TO OTHER DOCUMENTS OR
DISCLOSED TO OTHERS OR USED FOR ANY
PURPOSE OTHER THAN THAT WHICH IT WAS
OBTAINED WITHOUT THE EXPRESSED WRITTEN
CONSENT OF SAMTEC, INC.

DO NOT SCALE DRAWING

SHEET SCALE: 2.5:1

samtec

520 PARK EAST BLVD, NEW ALBANY, IN 47150
PHONE: 812-944-6733 FAX: 812-948-5047
e-Mail: info@SAMTEC.com code: 55322

DESCRIPTION:
.156[3.96] POWER STACKER ASSEMBLY

DWG. NO.
JW-XX-XX-XX-X-XXX-XXX-XX-X

BY: KEVIN B 06/12/2002 SHEET 2 OF 2