

To all our customers

---

## **Regarding the change of names mentioned in the document, such as Hitachi Electric and Hitachi XX, to Renesas Technology Corp.**

---

The semiconductor operations of Mitsubishi Electric and Hitachi were transferred to Renesas Technology Corporation on April 1st 2003. These operations include microcomputer, logic, analog and discrete devices, and memory chips other than DRAMs (flash memory, SRAMs etc.) Accordingly, although Hitachi, Hitachi, Ltd., Hitachi Semiconductors, and other Hitachi brand names are mentioned in the document, these names have in fact all been changed to Renesas Technology Corp. Thank you for your understanding. Except for our corporate trademark, logo and corporate statement, no changes whatsoever have been made to the contents of the document, and these changes do not constitute any alteration to the contents of the document itself.

Renesas Technology Home Page: <http://www.renesas.com>

Renesas Technology Corp.  
Customer Support Dept.  
April 1, 2003

## Cautions

Keep safety first in your circuit designs!

1. Renesas Technology Corporation puts the maximum effort into making semiconductor products better and more reliable, but there is always the possibility that trouble may occur with them. Trouble with semiconductors may lead to personal injury, fire or property damage.

Remember to give due consideration to safety when making your circuit designs, with appropriate measures such as (i) placement of substitutive, auxiliary circuits, (ii) use of nonflammable material or (iii) prevention against any malfunction or mishap.

Notes regarding these materials

1. These materials are intended as a reference to assist our customers in the selection of the Renesas Technology Corporation product best suited to the customer's application; they do not convey any license under any intellectual property rights, or any other rights, belonging to Renesas Technology Corporation or a third party.
2. Renesas Technology Corporation assumes no responsibility for any damage, or infringement of any third-party's rights, originating in the use of any product data, diagrams, charts, programs, algorithms, or circuit application examples contained in these materials.
3. All information contained in these materials, including product data, diagrams, charts, programs and algorithms represents information on products at the time of publication of these materials, and are subject to change by Renesas Technology Corporation without notice due to product improvements or other reasons. It is therefore recommended that customers contact Renesas Technology Corporation or an authorized Renesas Technology Corporation product distributor for the latest product information before purchasing a product listed herein.

The information described here may contain technical inaccuracies or typographical errors.

Renesas Technology Corporation assumes no responsibility for any damage, liability, or other loss rising from these inaccuracies or errors.

Please also pay attention to information published by Renesas Technology Corporation by various means, including the Renesas Technology Corporation Semiconductor home page (<http://www.renesas.com>).

4. When using any or all of the information contained in these materials, including product data, diagrams, charts, programs, and algorithms, please be sure to evaluate all information as a total system before making a final decision on the applicability of the information and products. Renesas Technology Corporation assumes no responsibility for any damage, liability or other loss resulting from the information contained herein.
5. Renesas Technology Corporation semiconductors are not designed or manufactured for use in a device or system that is used under circumstances in which human life is potentially at stake. Please contact Renesas Technology Corporation or an authorized Renesas Technology Corporation product distributor when considering the use of a product contained herein for any specific purposes, such as apparatus or systems for transportation, vehicular, medical, aerospace, nuclear, or undersea repeater use.
6. The prior written approval of Renesas Technology Corporation is necessary to reprint or reproduce in whole or in part these materials.
7. If these products or technologies are subject to the Japanese export control restrictions, they must be exported under a license from the Japanese government and cannot be imported into a country other than the approved destination. Any diversion or reexport contrary to the export control laws and regulations of Japan and/or the country of destination is prohibited.
8. Please contact Renesas Technology Corporation for further details on these materials or the products contained therein.

# SH7018 Series TFP-100B User System Interface Cable (HS7018EWN61H) for E6000 Emulator

User's Manual



ADE-702-331

Rev. 1.0

07/08/02

Hitachi, Ltd.

## Cautions

1. Hitachi neither warrants nor grants licenses of any rights of Hitachi's or any third party's patent, copyright, trademark, or other intellectual property rights for information contained in this document. Hitachi bears no responsibility for problems that may arise with third party's rights, including intellectual property rights, in connection with use of the information contained in this document.
2. Products and product specifications may be subject to change without notice. Confirm that you have received the latest product standards or specifications before final design, purchase or use.
3. Hitachi makes every attempt to ensure that its products are of high quality and reliability. However, contact Hitachi's sales office before using the product in an application that demands especially high quality and reliability or where its failure or malfunction may directly threaten human life or cause risk of bodily injury, such as aerospace, aeronautics, nuclear power, combustion control, transportation, traffic, safety equipment or medical equipment for life support.
4. Design your application so that the product is used within the ranges guaranteed by Hitachi particularly for maximum rating, operating supply voltage range, heat radiation characteristics, installation conditions and other characteristics. Hitachi bears no responsibility for failure or damage when used beyond the guaranteed ranges. Even within the guaranteed ranges, consider normally foreseeable failure rates or failure modes in semiconductor devices and employ systemic measures such as fail-safes, so that the equipment incorporating Hitachi product does not cause bodily injury, fire or other consequential damage due to operation of the Hitachi product.
5. This product is not designed to be radiation resistant.
6. No one is permitted to reproduce or duplicate, in any form, the whole or part of this document without written approval from Hitachi.
7. Contact Hitachi's sales office for any questions regarding this document or Hitachi semiconductor products.

# IMPORTANT INFORMATION

## READ FIRST

- **READ** this user's manual before using this user system interface cable.
- **KEEP the user's manual handy for future reference.**

**Do not attempt to use the user system interface cable until you fully understand its mechanism.**

### **User System Interface Cable:**

Throughout this document, the term "user system interface cable" shall be defined as the following product produced only by Hitachi, Ltd. excluding all subsidiary products.

- User system interface cable (HS7018EWN61H)

The user system or a host computer is not included in this definition.

### **Purpose of the User System Interface Cable:**

This user system interface cable is for connecting the emulator station and user system. This user system interface cable must only be used for the above purpose.

### **Improvement Policy:**

Hitachi, Ltd. (including its subsidiaries, hereafter collectively referred to as Hitachi) pursues a policy of continuing improvement in design, performance, functions, and safety of the user system interface cable. Hitachi reserves the right to change, wholly or partially, the specifications, design, user's manual, and other documentation at any time without notice.

### **Target User of the User System Interface Cable:**

This user system interface cable should only be used by those who have carefully read and thoroughly understood the information and restrictions contained in the user's manual. Do not attempt to use the user system interface cable until you fully understand its mechanism.

It is highly recommended that first-time users be instructed by users that are well versed in the operation of the user system interface cable.

## **LIMITED WARRANTY**

Hitachi warrants its user system interface cables to be manufactured in accordance with published specifications and free from defects in material and/or workmanship. Hitachi will repair or replace any user system interface cables determined to be defective in material and/or workmanship. User system interface cables are wearing parts which Hitachi will not repair or replace if damaged and/or worn through use. The foregoing shall constitute the sole remedy for any breach of Hitachi's warranty. This warranty extends only to you, the original Purchaser. It is not transferable to anyone who subsequently purchases the user system interface cable from you. Hitachi is not liable for any claim made by a third party or made by you for a third party.

## **DISCLAIMER**

HITACHI MAKES NO WARRANTIES, EITHER EXPRESS OR IMPLIED, ORAL OR WRITTEN, EXCEPT AS PROVIDED HEREIN, INCLUDING WITHOUT LIMITATION THEREOF, WARRANTIES AS TO MARKETABILITY, MERCHANTABILITY, FITNESS FOR ANY PARTICULAR PURPOSE OR USE, OR AGAINST INFRINGEMENT OF ANY PATENT. IN NO EVENT SHALL HITACHI BE LIABLE FOR ANY DIRECT, INCIDENTAL OR CONSEQUENTIAL DAMAGES OF ANY NATURE, OR LOSSES OR EXPENSES RESULTING FROM ANY DEFECTIVE USER SYSTEM INTERFACE CABLE, THE USE OF ANY USER SYSTEM INTERFACE CABLE, OR ITS DOCUMENTATION, EVEN IF ADVISED OF THE POSSIBILITY OF SUCH DAMAGES. EXCEPT AS EXPRESSLY STATED OTHERWISE IN THIS WARRANTY, THIS USER SYSTEM INTERFACE CABLE IS SOLD "AS IS", AND YOU MUST ASSUME ALL RISK FOR THE USE AND RESULTS OBTAINED FROM THE USER SYSTEM INTERFACE CABLE.

## **State Law:**

Some states do not allow the exclusion or limitation of implied warranties or liability for incidental or consequential damages, so the above limitation or exclusion may not apply to you. This warranty gives you specific legal rights, and you may have other rights which may vary from state to state.

## **The Warranty is Void in the Following Cases:**

Hitachi shall have no liability or legal responsibility for any problems caused by misuse, abuse, misapplication, neglect, improper handling, installation, repair or modifications of the user system interface cable without Hitachi's prior written consent or any problems caused by the user system.

## **All Rights Reserved:**

This user's manual and user system interface cable are copyrighted and all rights are reserved by Hitachi. No part of this user's manual, all or part, may be reproduced or duplicated in any form, in hard-copy or machine-readable form, by any means available without Hitachi's prior written consent.

## **Other Important Things to Keep in Mind:**

1. Circuitry and other examples described herein are meant merely to indicate the characteristics and performance of Hitachi's semiconductor products. Hitachi assumes no responsibility for any intellectual property claims or other problems that may result from applications based on the examples described herein.
2. No license is granted by implication or otherwise under any patents or other rights of any third party or Hitachi.

## **Figures:**

Some figures in this user's manual may show items different from your actual system.

## **Limited Anticipation of Danger:**

Hitachi cannot anticipate every possible circumstance that might involve a potential hazard. The warnings in this user's manual and on the user system interface cable are therefore not all inclusive. Therefore, you must use the user system interface cable safely at your own risk.

# SAFETY PAGE

## READ FIRST

- **READ** this user's manual before using this user system interface cable.
- **KEEP the user's manual handy for future reference.**

Do not attempt to use the user system interface cable until you fully understand its mechanism.

## DEFINITION OF SIGNAL WORDS



This is the safety alert symbol. It is used to alert you to potential personal injury hazards. Obey all safety messages that follow this symbol to avoid possible injury or death.



**DANGER** indicates an imminently hazardous situation which, if not avoided, will result in death or serious injury.



**WARNING** indicates a potentially hazardous situation which, if not avoided, could result in death or serious injury.



**CAUTION** indicates a potentially hazardous situation which, if not avoided, may result in minor or moderate injury.



**CAUTION** used without the safety alert symbol indicates a potentially hazardous situation which, if not avoided, may result in property damage.

**NOTE** emphasizes essential information.

# **WARNING**

**Observe the precautions listed below. Failure to do so will result in a FIRE HAZARD and will damage the user system and the emulator product or will result in PERSONAL INJURY. The USER PROGRAM will be LOST.**

- 1. Do not repair or remodel the emulator product by yourself for electric shock prevention and quality assurance.**
- 2. Always switch OFF the E6000 emulator and user system before connecting or disconnecting any CABLES or PARTS.**
- 3. Always before connecting any CABLES, make sure that pin 1 on both sides are correctly aligned.**
- 4. If cables are connected incorrectly, the power pins will be short circuited in the following way:**

90° rotation	180° rotation	270° rotation
25 (Vss) — 100 (Vcc)	15 (Vcc) — 65 (Vss)	30 (Vcc) — 55 (Pvcc)
55 (Pvcc) — 30 (Vcc)	39 (Vcc) — 89 (Vss)	74 (Vcc) — 99 (Avcc)
99 (Avcc) — 74 (Vcc)		100 (Vcc) — 25 (Vss)

# Preface

Thank you for purchasing this user system interface cable (HS7018EWN61H) for the Hitachi's original microcomputer SH7018 series.

The HS7018EWN61H is a user system interface cable that connects an SH7010 series E6000 emulator (HS7010EPI60H; hereinafter referred to as the emulator) to the IC socket for a TFP-100B package for the SH7018 series MCU on the user system.

# Contents

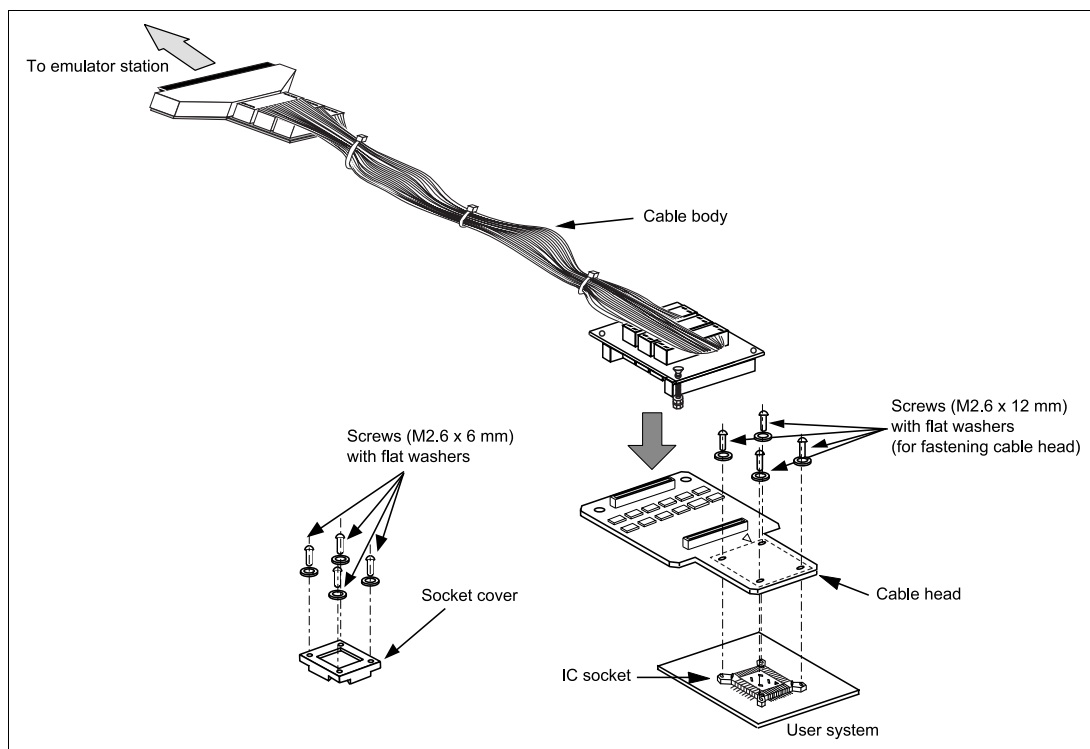
Section 1	Configuration.....	1
Section 2	Environmental Conditions .....	3
2.1	Setting Operating Voltage and Operating Frequency .....	3
Section 3	Product Specifications .....	4
Section 4	User Interface Specifications .....	5
4.1	User System Interface Circuit .....	5
Section 5	Notes on Emulation .....	8
5.1	Setting Internal ROM.....	8
5.2	Setting Pin Function Controller .....	8
Section 6	Connection Procedures .....	9
6.1	Connecting User System Interface Cable to Emulator Station.....	9
6.2	Connecting User System Interface Cable to User System .....	11
6.2.1	Installing IC Socket.....	11
6.2.2	Soldering IC Socket .....	11
6.2.3	Inserting Cable Head.....	12
6.2.4	Fastening Cable Head .....	12
6.2.5	Fastening Cable Body .....	14
6.3	Recommended Dimensions for User System Mount Pad.....	15
6.4	Dimensions for User System Interface Cable Head .....	16
6.5	Resulting Dimensions after Connecting User System Interface Cable.....	17
Section 7	Installing the MCU to the User System .....	18
Section 8	Verifying Operation .....	20
Section 9	Notice.....	21

## Section 1 Configuration

# CAUTION

**Use an IC149-100-054-B51 socket (manufactured by YAMAICHI ELECTRONICS Co., Ltd.) for the TFP-100B package IC socket on the user system.**

Figure 1 shows the configuration of the HS7018EWN61H user system interface cable for the TFP-100B package.



**Figure 1 HS7018EWN61H User System Interface Cable**

Table 1 lists the HS7018EWN61H components. Please make sure you have all of these components when unpacking.

**Table 1      HS7018EWN61H Components**

<b>No.</b>	<b>Component</b>	<b>Quantity</b>	<b>Remarks</b>
1	Cable body	1	
2	Cable head	1	
3	IC socket	1	For the TFP-100B package
4	Socket cover	1	For installing a TFP-100B-packaged MCU
5	Screws (M2.6 x 12 mm)	4	For fastening cable head (with four flat washers)
6	Screws (M2.6 x 6 mm)	4	For installing a TFP-100B-packaged MCU (with four flat washers)
7	Documentation	1	User's manual for HS7018EWN61H (this manual)

## Section 2 Environmental Conditions

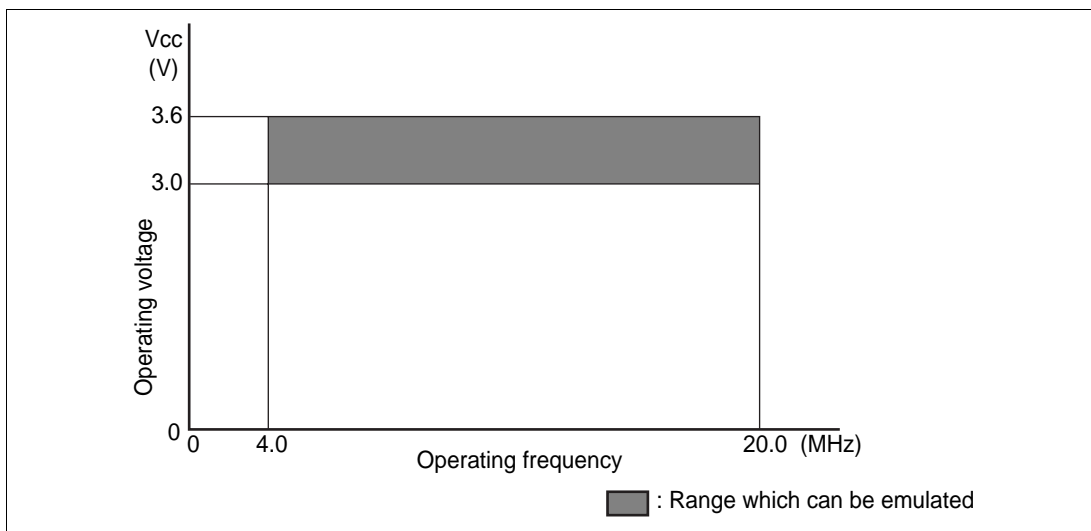
Maintain the conditions in table 2 when using the emulator.

**Table 2      Environmental Conditions**

Item	Specifications
Temperature	Operating: +10 to +35°C Storage: -10 to +35°C
Humidity	Operating: 35 to 80% RH, no condensation Storage: 35 to 80% RH, no condensation
Vibration	Operating: 2.45 m/s max. Storage: 4.9 m/s max. Transportation: 14.7 m/s max.
Ambient gases	There must be no corrosive gases present.

### 2.1      Setting Operating Voltage and Operating Frequency

Connecting the user system interface cable to the SH7010 series E6000 emulator enables emulation to be done using the user system operating voltage ( $V_{cc}$ : 3.0 to 3.6 V) Before determining the operating voltage and frequency of the user system, confirm the allowable range.



**Figure 2    Allowable Operating Range**

## Section 3 Product Specifications

The specifications of this product are shown in table 3.

**Table 3      Product Specifications**

Item	Specifications
Target processor	SH7018F
Package	TFP-100B
Function	Level limitation: This function keeps the output signal from 5-V emulator system equal to or less than power supply voltage of the user system (Vcc).
User-system operating conditions	Power supply voltage Vcc: 3.0 to 3.6 V, Pvcc: 4.5 to 5.5 V A drop in the Vcc level of the user system is detected when the power supply voltage drops to 2.5 V or less.
Current consumption	Maximum of 50 mA.

### **Drop in Vcc Level Detection Function:**

When the user system interface cable is used, a drop is detected as follows:

When the power supply voltage (UVcc) of the user system is 2.5 V or less or when the power supply voltage (PVcc) for I/O circuits is 4.1 V or less, the Hitachi Debugging Interface (HDI) will detect a Vcc drop. In this case, a sufficient voltage may not be supplied to the user system; ensure that the specified voltage is supplied.

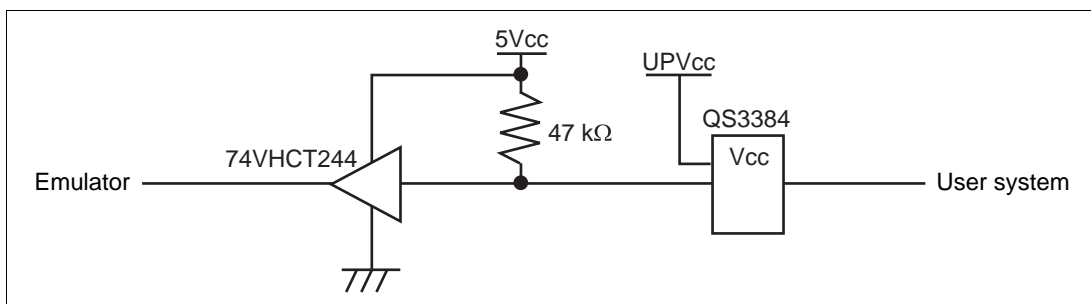
## Section 4 User Interface Specifications

The user system interface cable incorporates a level conversion circuit supporting a low-voltage circuit. Accordingly, when connecting the user system to the emulator, pay attention to the signal delays and the number of FANINs and FANOUTs.

### 4.1 User System Interface Circuit

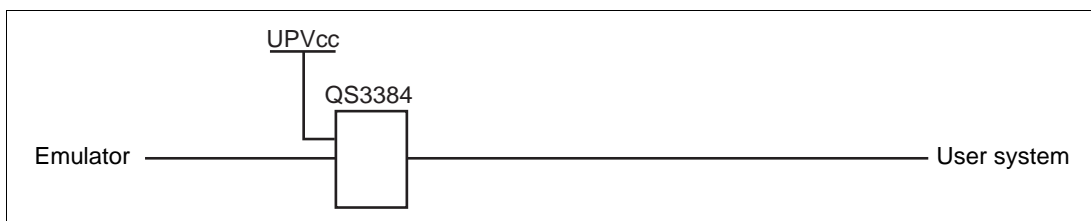
The user system interface circuit of the user system interface cable is shown below.

(1) NMI and  $\overline{\text{RES}}$



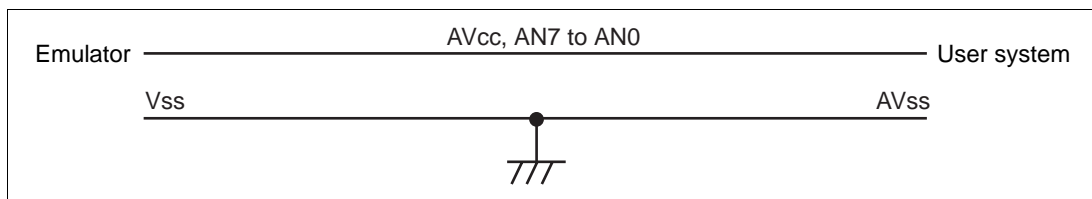
**Figure 3** User System Interface Circuit for NMI and  $\overline{\text{RES}}$

(2) PB8, PA5 to PA2, PD7 to PD0, PE2, and PE0



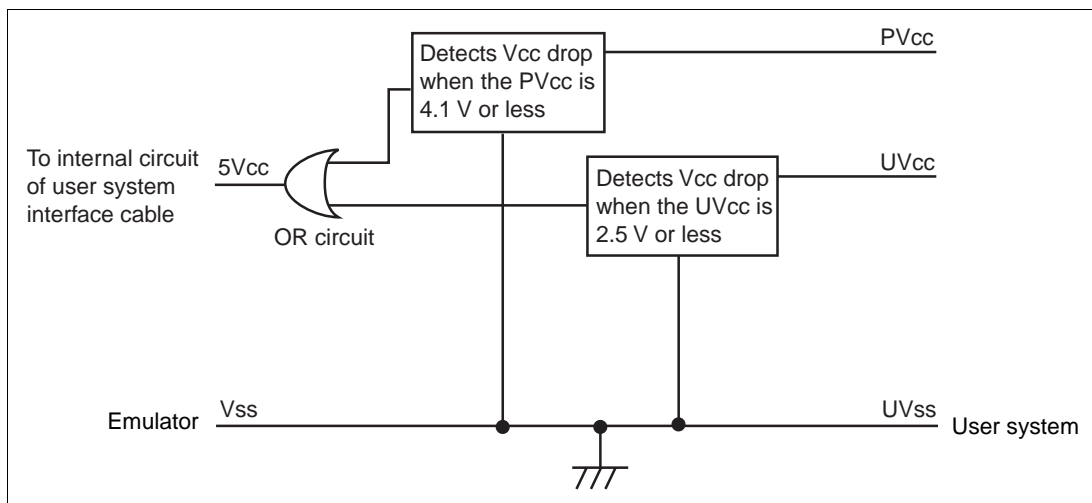
**Figure 4** User System Interface Circuit for PB8, PA5 to PA2, PD7 to PD0, PE2, and PE0

(3) AVcc, AVss, and AN7 to AN0



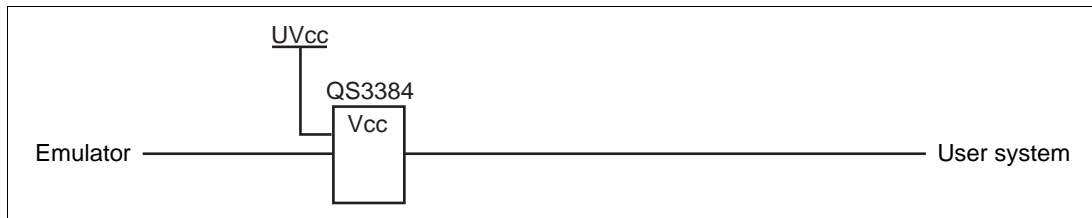
**Figure 5 User System Interface Circuit for AVcc, AVss, and AN7 to AN0**

(4) PVcc, Vcc and Vss



**Figure 6 User System Interface Circuit for Vcc and Vss**

(5) Other digital signals



**Figure 7 User System Interface Circuit for Other Digital Signals**

Note: 5Vcc, Uvcc, and Uvss represent Vcc and Vss on a user system. 5Vcc represents Vcc (5 V) generated in the user system interface cable.

## Section 5 Notes on Emulation

This user system interface cable supports the SH7018F. The following settings must be made prior to emulation.

### 5.1 Setting Internal ROM

Set 32 kbytes for internal ROM size. Even when 32 kbytes is set for this emulator, a 256-kbytes area is effective. However, since the flash memory capacity of the SH7018 is 160 kbytes, programming must be performed so that the 160-kbytes capacity is not exceeded.

### 5.2 Setting Pin Function Controller

Since the initial register values when the emulator is used differ from those of the SH7018F, as shown in table 4, the initial settings must be made by the user program.

**Table 4 Pin Function Controller Settings**

Register name	Symbol	Address	Initial Value when Emulator is Used	Initial Value for SH7018F
Port A control register L2	PACRL2	H'FFFF838E H'FFFF838F	H'0140	H'0000
Port B control register 1	PBCR1	H'FFFF8398 H'FFFF8399	H'000A	H'0000
Port B control register 2	PBCR2	H'FFFF839A H'FFFF839B	H'A000	H'0000

Note that the initial values of the pin function for the emulator differ from those of the SH7018F, as shown in table 5 (initial values are shaded).

**Table 4 Pin Function Controller Settings**

Pin No.	Emulator	SH7018F
28	PB6/IRQ4/A18/BACK	PB6/A18
29	PB7/IRQ5/A19/BREQ	PB7/A19
31	PB9/IRQ7/A21/ADTRQ	PB9/IRQ7/A21
46	PB8/IRQ6/A20/WAIT	PB8/IRQ6/A20/WAIT
48	PA4/TXD1	PA4/TXD1
49	PA3/RXD1	PA3/RXD1

## Section 6 Connection Procedures

### 6.1 Connecting User System Interface Cable to Emulator Station

#### **WARNING**

**Observe the precautions listed below. Failure to do so will result in a FIRE HAZARD and will damage the user system and the emulator product or will result in PERSONAL INJURY. The USER PROGRAM will be LOST.**

- 1. Always switch OFF the user system and the emulator product before the USER SYSTEM INTERFACE CABLE is connected to or removed from any part. Before connecting, make sure that pin 1 on both sides are correctly aligned.**
- 2. The user system interface cable dedicated to the emulator must be used.**

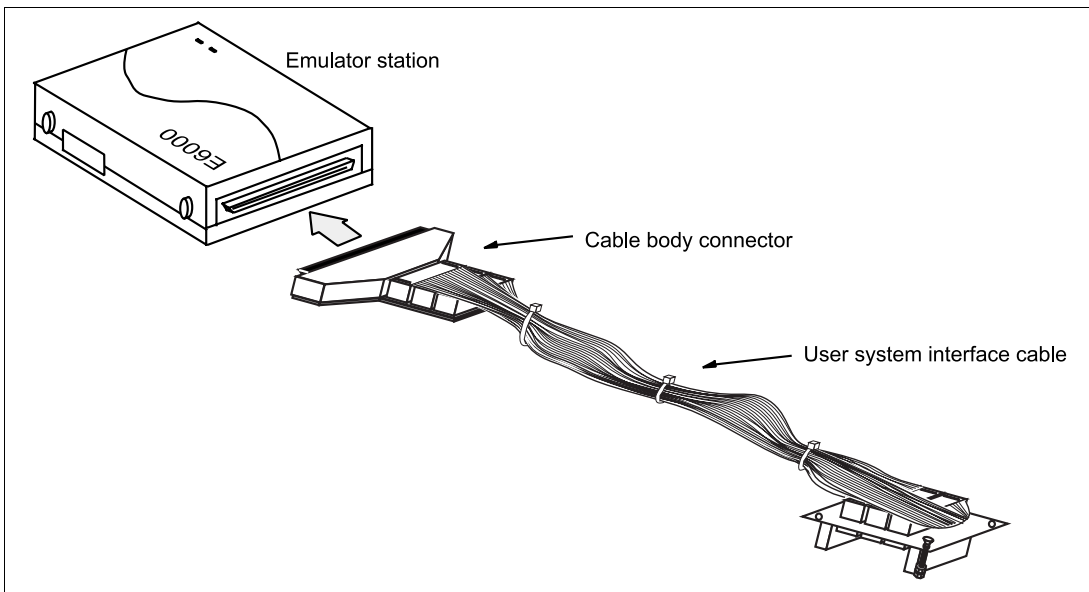
To connect the cable body to the emulator station, follow the instructions below.

1. Make sure the user system and emulator station are turned off.

#### **CAUTION**

**When connecting or removing the user system interface cable, apply force only in the direction suitable for connection or removal, while making sure not to bend or twist the cable or connectors. Otherwise, the connectors will be damaged.**

2. After making sure the direction of the cable body connector is correct, firmly insert the cable body connector into the emulator station socket (figure 8).



**Figure 8 Connecting User System Interface Cable to Emulator Station**

## 6.2 Connecting User System Interface Cable to User System

### **WARNING**

**Always switch OFF the user system and the emulator product before the USER SYSTEM INTERFACE CABLE is connected to or removed from any part. Before connecting, make sure that pin 1 on both sides are correctly aligned. Failure to do so will result in a FIRE HAZARD and will damage the user system and the emulator product or will result in PERSONAL INJURY. The USER PROGRAM will be LOST.**

To connect the cable head to the user system, follow the instructions below.

### 6.2.1 Installing IC Socket

After checking the location of pin 1 on the IC socket, apply epoxy resin adhesive to the bottom of the IC socket for a TFP-100B package, and fasten it to the user system before soldering.

### 6.2.2 Soldering IC Socket

After fastening, solder the IC socket for a TFP-100B package to the user system. Be sure to completely solder the leads so that the solder slopes gently over the leads and forms solder fillets. (Use slightly more solder than the MCU.)

### 6.2.3 Inserting Cable Head

## CAUTION

**Check the location of pin 1 before inserting.**

**If the IC socket is not connected properly, the power-supply pins will be shorted as shown below.**

90° rotation		180° rotation		270° rotation	
25 (Vss)	— 100 (Vcc)	15 (Vcc)	— 65 (Vss)	30 (Vcc)	— 55 (Pvcc)
55 (Pvcc)	— 30 (Vcc)	39 (Vcc)	— 89 (Vss)	74 (Vcc)	— 99 (Avcc)
99 (Avcc)	— 74 (Vcc)			100 (Vcc)	— 25 (Vss)

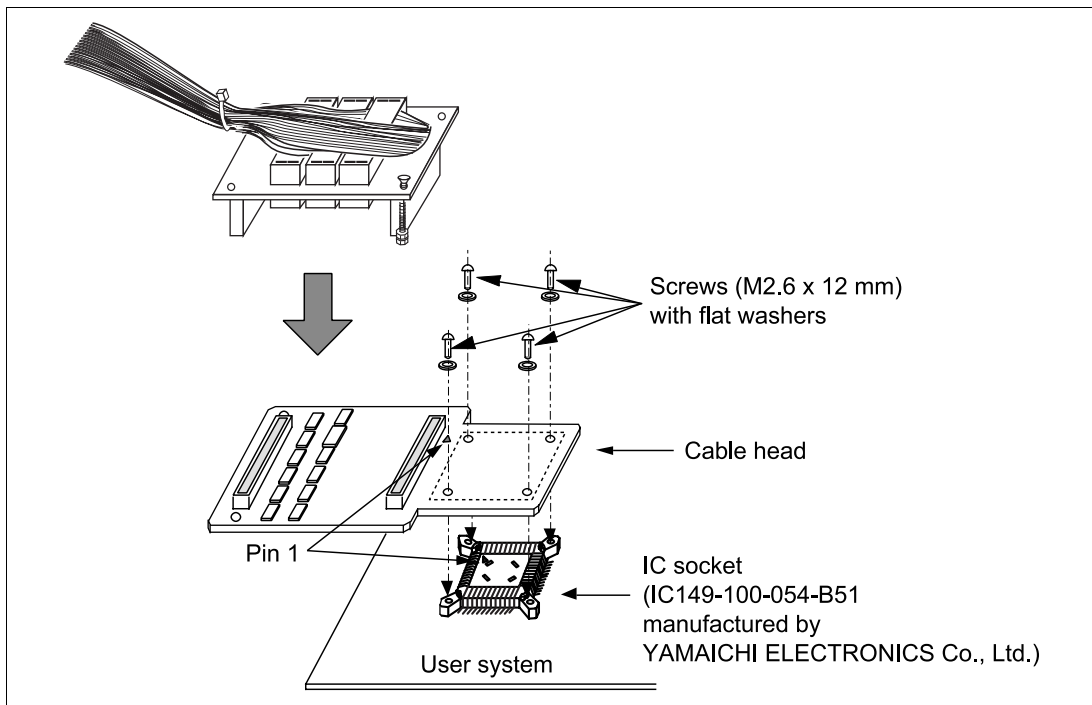
Align pin 1 on the IC socket for a TFP-100B package on the user system with pin 1 on the user system interface cable head, and insert the user system interface cable head into the IC socket on the user system, as shown in figure 9.

### 6.2.4 Fastening Cable Head

## CAUTION

1. Use a Philips-type screwdriver whose head matches the screw head.
2. The tightening torque must be 0.294 N•m or less.  
If the applied torque cannot be accurately measured, stop tightening when the force required to turn the screw becomes significantly greater than that needed when first tightening. If a screw is tightened too much, the screw head may break or an IC socket contact error may be caused by a crack in the IC socket solder.
3. If the emulator does not operate correctly, cracks might have occurred in the solder. Check conduction with a tester and re-solder the IC socket if necessary.

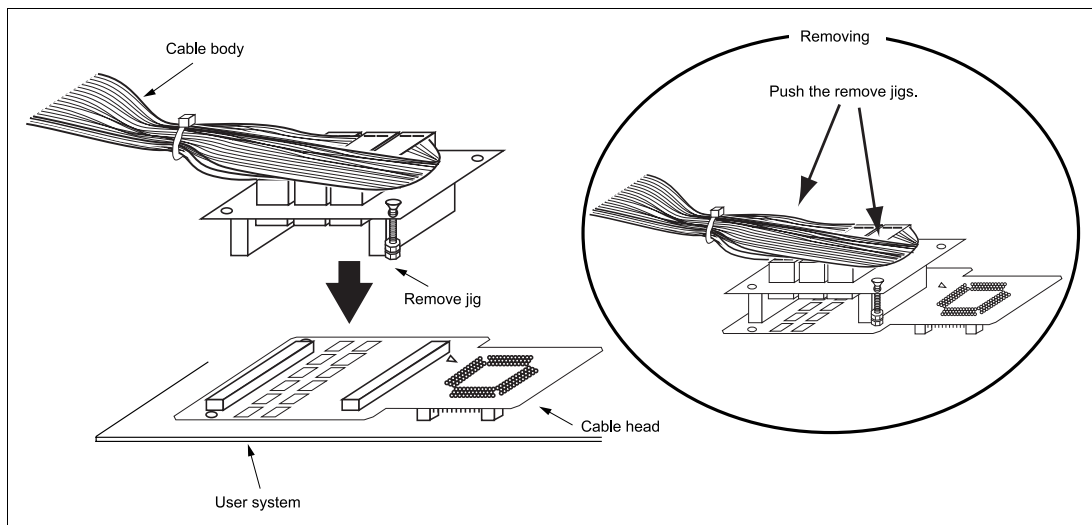
Fasten the user system interface cable head to the IC socket for a TFP-100B package on the user system with the four screws (M2.6 x 12 mm; with four flat washers) provided. Each screw should be tightened a little at a time, alternating between screws on opposing corners. Take special care, such as manually securing the IC socket soldered area, to prevent the soldered IC socket from being damaged by overtightening the screws or twisting the components.



**Figure 9 Connecting User System Interface Cable to User System**

## 6.2.5 Fastening Cable Body

Connect the cable body to the cable head.



**Figure 10 Fastening Cable Body**

### 6.3 Recommended Dimensions for User System Mount Pad

Figure 6 shows the recommended dimensions for the mount pad (footprint) for the user system with an IC socket for a TFP-100B package (IC149-100-054-B51: manufactured by YAMAICHI ELECTRONICS Co., Ltd.). Note that the dimensions in figure 5 are somewhat different from those of the actual chip's mount pad.

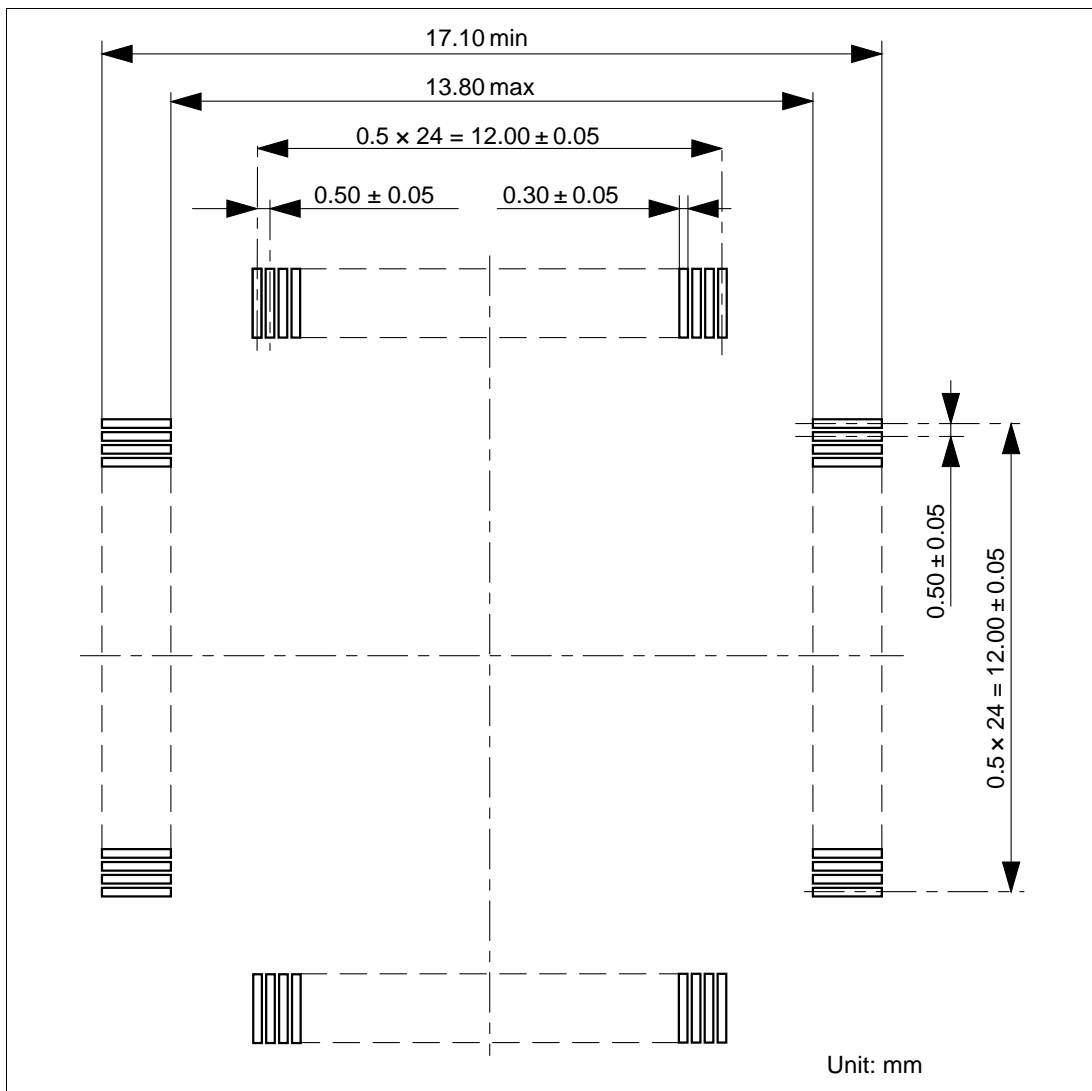
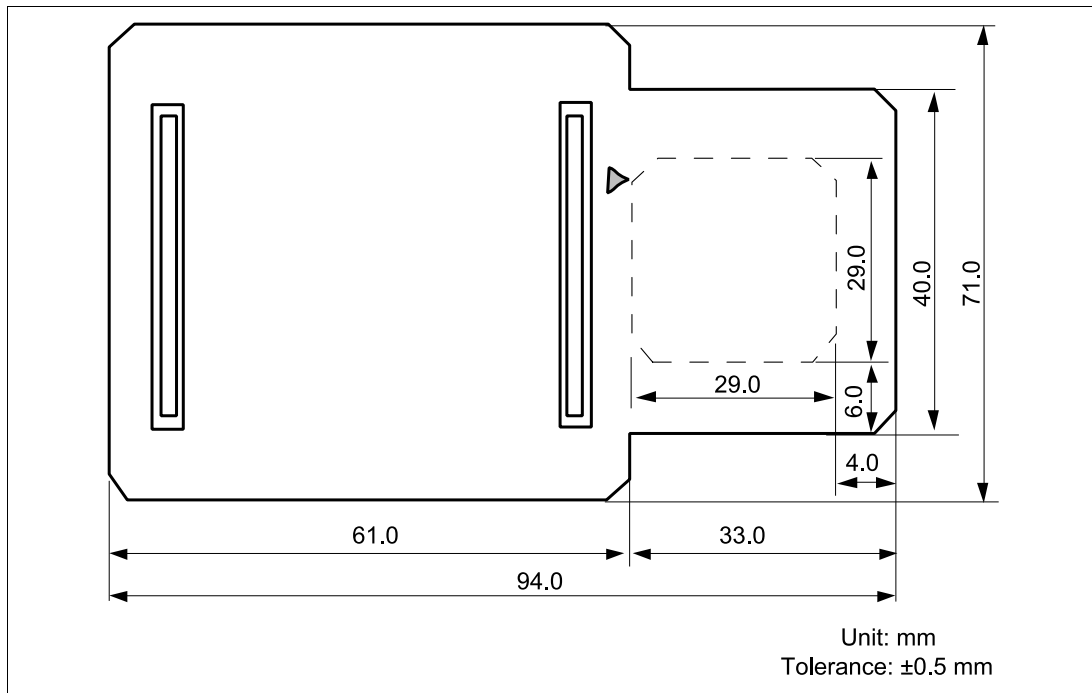


Figure 11 Recommended Dimensions for Mount Pad

## 6.4 Dimensions for User System Interface Cable Head

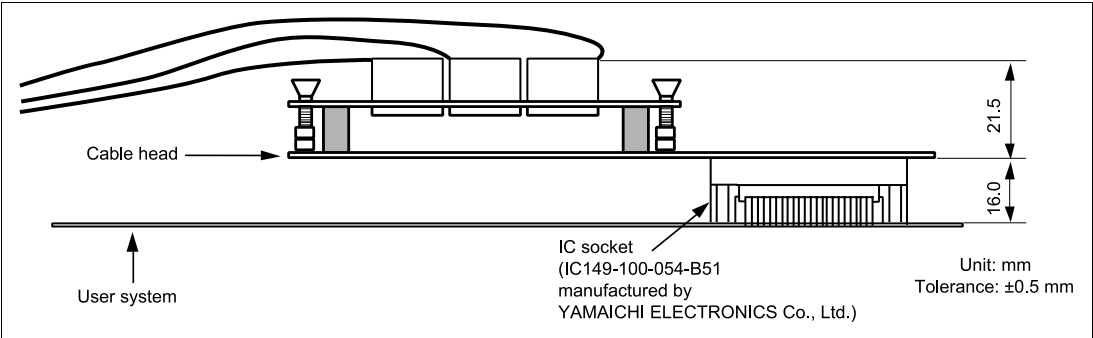
The dimensions for the user system interface cable head are shown in figure 12.



**Figure 12 Dimensions for User System Interface Cable Head**

## 6.5 Resulting Dimensions after Connecting User System Interface Cable

The resulting dimensions, after connecting the user system interface cable head to the user system, are shown in figure 13.



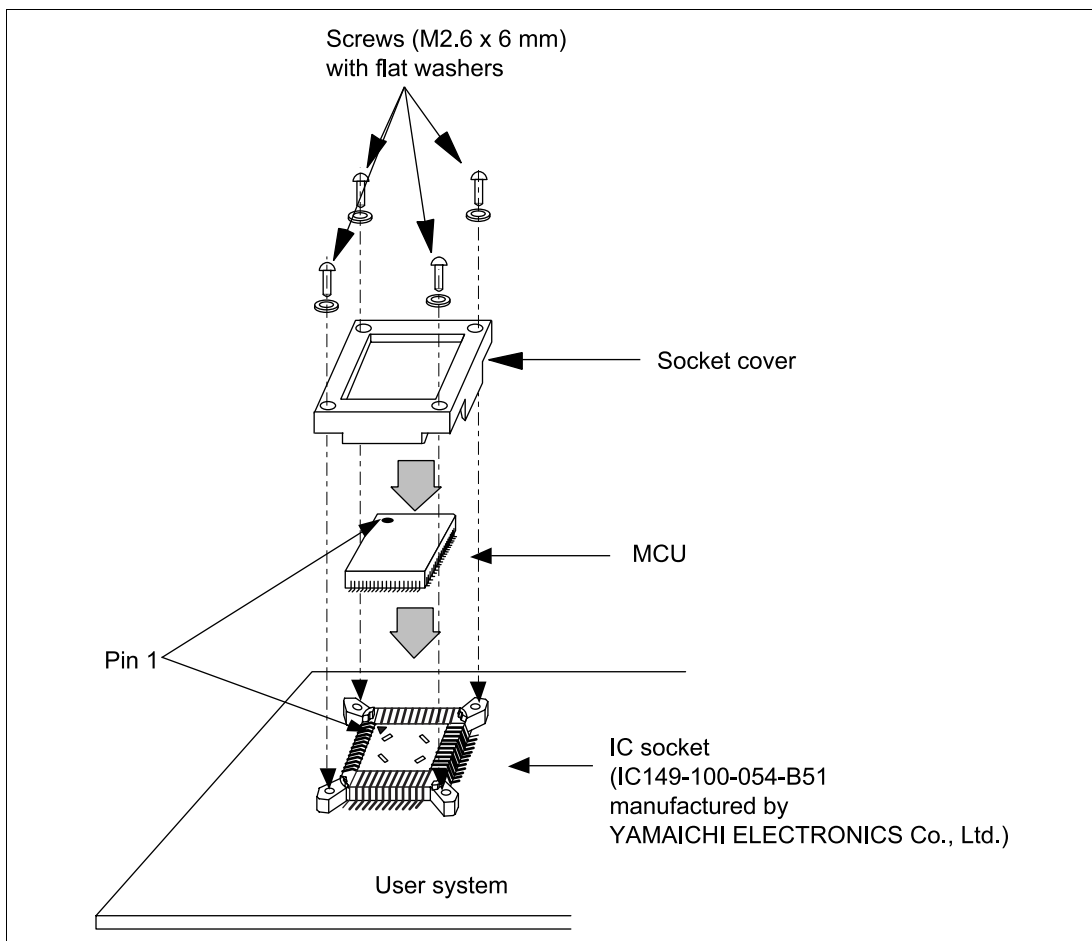
**Figure 13 Resulting Dimensions after Connecting User System Interface Cable**

## Section 7 Installing the MCU to the User System

### CAUTION

1. Check the location of pin 1 before inserting.
2. Use a Philips-type screwdriver whose head matches the screw head.
3. The tightening torque must be 0.294 N•m or less.  
If the applied torque cannot be accurately measured, stop tightening when the force required to turn the screw becomes significantly greater than that needed when first tightening. If a screw is tightened too much, the screw head may break or an IC socket contact error may be caused by a crack in the IC socket solder.
4. If the MCU does not operate correctly, cracks might have occurred in the solder. Check conduction with a tester and re-solder the IC socket if necessary.

Check the location of pin 1 before inserting the MCU into the IC socket on the user system, as shown in figure 14. After inserting the MCU, fasten the socket cover with the provided four screws (M2.6 x 6 mm; with four flat washers). Take special care, such as manually securing the IC socket soldered area, to prevent the IC socket from being damaged by overtightening the screws or twisting the components.

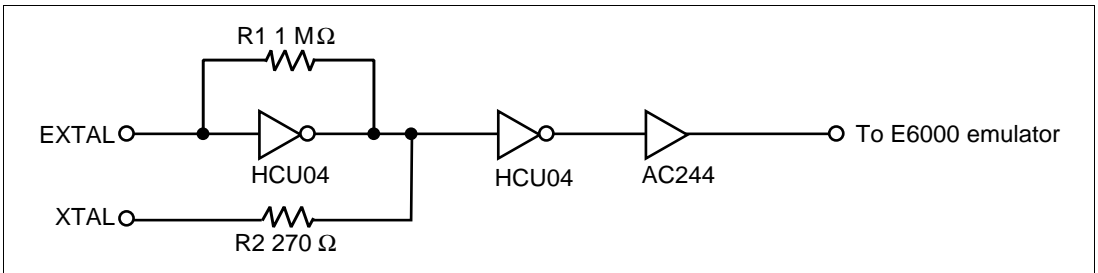


**Figure 14 Installing MCU to User System**

## Section 8 Verifying Operation

1. When using the E6000 emulator for the SH series, turn on the emulator according to the procedures described in the SH Series E6000 Emulator User's Manual (HS7000EPI60HE).
2. Verify the user system interface cable connections by accessing the external memory and ports to check the bus states of the pins with the MEMORY\_FILL command (emulator command). If an error is detected, recheck the soldered IC socket and the location of pin 1.
3. The emulator connected to this user system interface cable supports two kinds of clock sources as the MCU clock: an emulator internal clock and an external clock on the user system. For details, refer to the Emulator Supplementary Information (HS7010EPI60HE).
  - To use the emulator internal clock  
Select the clock in the emulator station as the system clock ( $\phi$ ), by using the CLOCK command (emulator command).
  - To use the external clock on the user system  
Select the target clock (Target) as the system clock ( $\phi$ ), by using the CLOCK command (emulator command). Supply the external clock from the user system to the emulator by inputting the external clock from the EXTAL terminal (pin 68) on the cable head (operates at 4 to 20 MHz) or connecting a crystal oscillator to the EXTAL and XTAL terminals (the frequency must be 4 to 20 MHz). For details, refer to section 4, Clock Pulse Generator (CPG), in the SH7010 Series Hardware Manual.

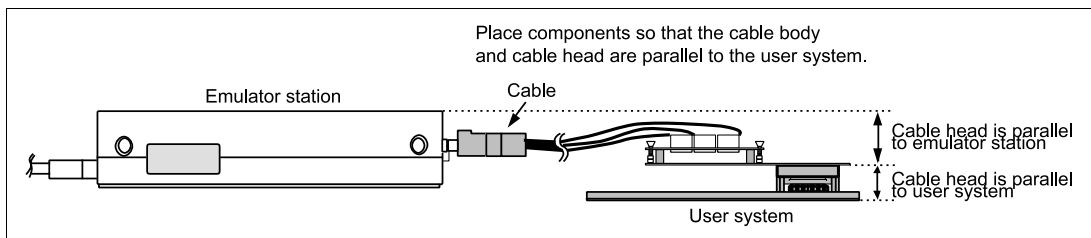
Figure 15 shows the oscillator circuit on the user system interface cable.



**Figure 15 System Clock Oscillator**

## Section 9 Notice

1. Make sure that pin 1 on the user system IC socket is correctly aligned with pin 1 on the cable head before inserting the cable head into the user system IC socket.
2. The dimensions of the recommended mount pad for the user system IC socket are different from those of the MCU.
3. This user system interface cable is specifically designed for the HS7010EPI60H emulator. Do not use this cable with any other emulator station.
4. To prevent breaking of wires in the cable body, do not place heavy or sharp metal objects on the user system interface cable.
5. While the emulator station is connected to the user system with the user system interface cable, force must not be applied to the cable head. Place the emulator station, user system interface cable, and user system as shown in the example in figure 15.



**Figure 16 User System Interface Cable Location Example**