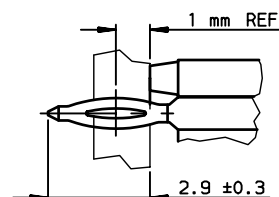


DETAIL-1: PRESS-FIT TAIL



NOTE-1: NORMINATIVE REF = IEC-61076-4-104

NOTE-2: ONE CENTER PEG FOR HOLD DOWN FORCE

NOTE-3: CODING RECESS FOR 8MM EXTENDED KEYS

NOTE-4: PRODUCT MARKING = FCI + BATCH CODE + PRODUCT NUMBER

FOR 4 MODULE SIZE, ADD CSA LOGO MARKING

NOTE-6: CENTRAL WALL WITH END REAR SUPPORT

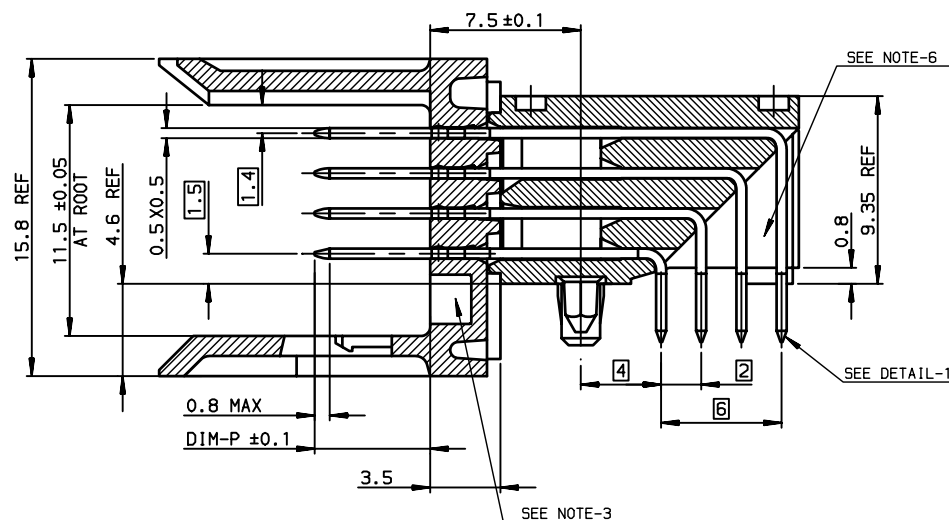
NOTE-7: PACKAGING IN TRAY + COVER

IF SUFFIX "P" IS ADDED IN P/N PACKAGING IS IN TRAYS

BUT CONNECTOR MARKING IS WITHOUT "P"

EXAMPLE: HM1XXXXXXXXXH6P, MARKED HM1XXXXXXXXXH6

SECTION-A SCALE: 4/1







GENERAL CHARACTERISTICS AND ROHS INFORMATIONS:

SEE PRODUCT SPECIFICATION GS-12-445

OTHERS INFORMATIONS,SEE DRW C-8626-0152-2

## European Views

www.fciconnect.com			surface ISO 1302 		tolerance std ISO 406 ISO 1101		projection 		mm 		
			TOLERANCES UNLESS OTHERWISE SPECIFIED								
Dr	CHAMPION	1994/04/05	ANGULAR	LINEAR	0.X	±0.1	size A3	Scale 2.5			
Eng	LENOIR	1994/04/05			0.XX	±0.1					
Chr	LEGARE	1994/04/05			0.XXX	±0.1		ECN LS08-0125			
Appr	LEGARE	1994/04/05	Product family				METRAL		Spec ref -		
			METRAL RA HDR WB CONVERGE					dwg no C-8626-0152-1		Rev. L	
			4X24 CTS - PF - PUSH PEG								
			catalog no -								
			CUSTOMER					sheet 1 of 2			

rev	ecn no	dr	date
G	-	CHA	2003/07/09
H	LS05-0056	MLE	2005/06/03
J	LS06-0097	LGO	2006/07/12
K	LS07-0184	MLE	2007/07/24
L	LS08-0125	MLE	2008/05/13
-	-	-	-
-	-	-	-

## TIN LEAD PART NUMBER

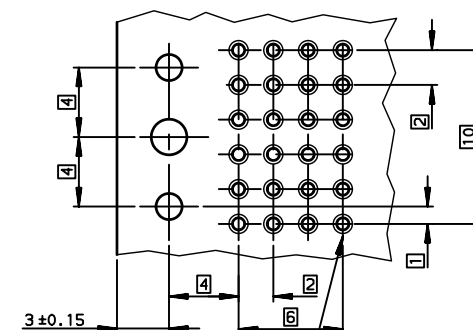
PART NUMBER / CONTACT LOADING									
DIM-P ±0.10				P/N AND PERFORMANCE LEVEL		SP N°			
ROW-A	ROW-B	ROW-C	ROW-D	TRAY PACKAGING	TUBE PACKAGING				
5.00	5.00	5.00	5.00	HM1L43ADP000H6P	HM1L43ADP000H6				
5.75	5.75	5.75	5.75	HM1L43LDP000H6P					
6.50	6.50	6.50	6.50	HM1L43DDP000H6P					
6.50	5.00	5.00	5.00	HM1L43BDP000H6P					
6.50	5.75	5.75	6.50	HM1L43CDP000H6P					
5.00	5.00	6.50	5.00	HM1L43ZDP110H6P		110			
5.00	5.75	6.50	5.00	HM1L43ZDP430H6P		430			
5.00	5.75	5.00	5.00	HM1L43ZDP448H6P		448			
5.75	5.00	5.00	5.00	HM1L43ZDP009H6P		009			
5.75	6.50	5.75	5.00	HM1L43ZDP424H6P		424			
6.50	5.75	6.50	5.75	HM1L43ZDP037H6P		037			
6.50	5.75	5.00	5.75	HM1L43ZDP102H6P		102			
6.50	6.50	6.50	5.75	HM1L43ZDP135H6P		135			
6.50	5.75	5.75	5.75	HM1L43ZDP369H6P		369			
8.00	6.50	6.50	6.50	HM1L43ZDPA07H6P		A07			

STANDARD MATING LENGTHS = 5.75 (AND 5.00-6.50)

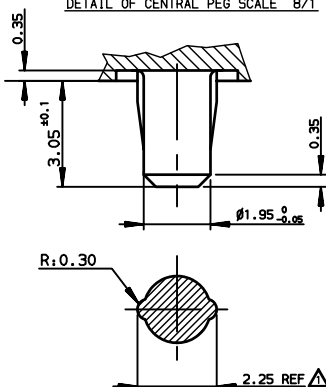
## LEAD-FREE PART NUMBER

PART NUMBER / CONTACT LOADING									
DIM-P ±0.10				P/N AND PERFORMANCE LEVEL		SP N°			
ROW-A	ROW-B	ROW-C	ROW-D	TRAY PACKAGING	TUBE PACKAGING				
5.00	5.00	5.00	5.00	HM1L43ADP000H6PLF	HM1L43ADP000H6LFL				
5.75	5.75	5.75	5.75	HM1L43LDP000H6PLF					
6.50	6.50	6.50	6.50	HM1L43DDP000H6PLF					
6.50	5.00	5.00	5.00	HM1L43BDP000H6PLF					
6.50	5.75	5.75	6.50	HM1L43CDP000H6PLF					
5.00	5.00	6.50	5.00	HM1L43ZDP110H6PLF		110			
5.00	5.75	6.50	5.00	HM1L43ZDP430H6PLF		430			
5.00	5.75	5.00	5.00	HM1L43ZDP448H6PLF		448			
5.75	5.00	5.00	5.00	HM1L43ZDP009H6PLF		009			
5.75	6.50	5.75	5.00	HM1L43ZDP424H6PLF		424			
6.50	5.75	6.50	5.75	HM1L43ZDP037H6PLF		037			
6.50	5.75	5.00	5.75	HM1L43ZDP102H6PLF		102			
6.50	6.50	6.50	5.75	HM1L43ZDP135H6PLF		135			
6.50	5.75	5.75	5.75	HM1L43ZDP369H6PLF		369			
8.00	6.50	6.50	6.50	HM1L43ZDPA07H6PLF		A07			

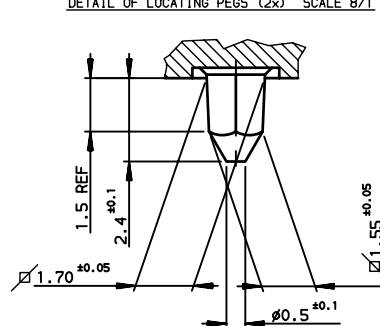
STANDARD MATING LENGTHS = 5.75 (AND 5.00-6.50)

RECOMMENDED PCB LAYOUT  
PER 12MM LENGTHHole according to product spec  
GS-12-445 (for press-fit) ,  
GS-12-446 (for STB)

DETAIL OF CENTRAL PEG SCALE 8/1



DETAIL OF LOCATING PEGS (2x) SCALE 8/1



REV F - 2006-04-17

www.fciconnect.com

surface  
ISO 1302tolerance std  
ISO 406 ISO 1101projection  
mm

TOLERANCES UNLESS OTHERWISE SPECIFIED

Dr	CHAMPION	1994/04/05
Eng	LENOIR	1994/04/05
Chr	LEGARE	1994/04/05
Appr	LEGARE	1994/04/05

ANGULAR	LINEAR
0.X	0.XX
0.XX' ±2°	0.XXX

size	A3
ECN	LS08-0125
Spec ref	-

Product family

METRAL

METRAL RA HDR WB CONVERGE  
4X24 CTS - PF - PUSH PEG

dwg no

C-8626-0152-2

Rev.  
L

catalog no

CUSTOMER sheet 2 of 2

PDM: Rev:L

STATUS: Released

Printed: May 20, 2008