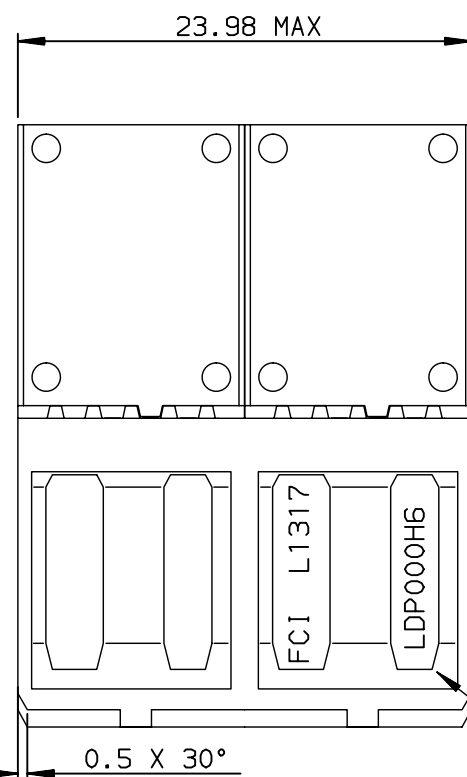
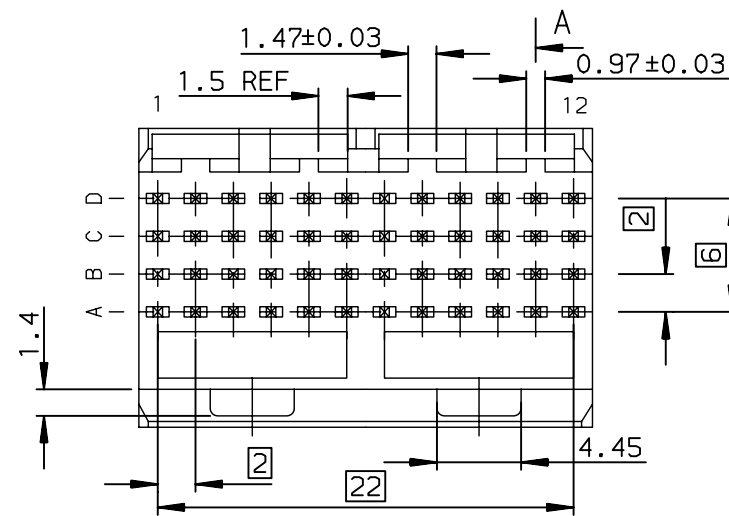
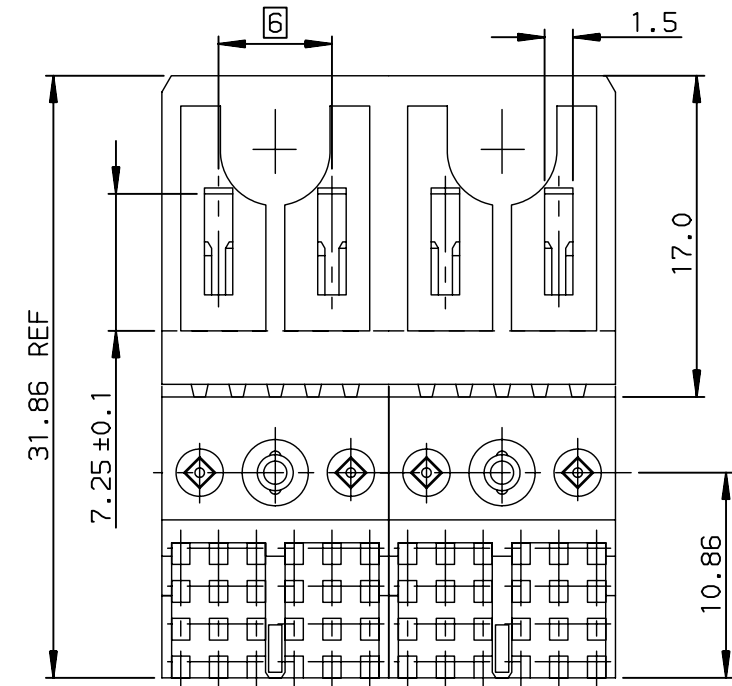


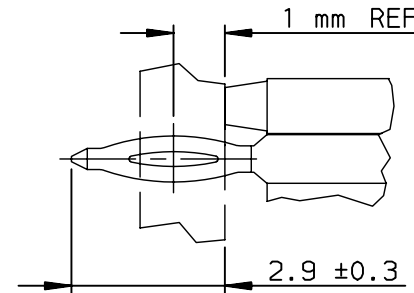


Copyright FCI.



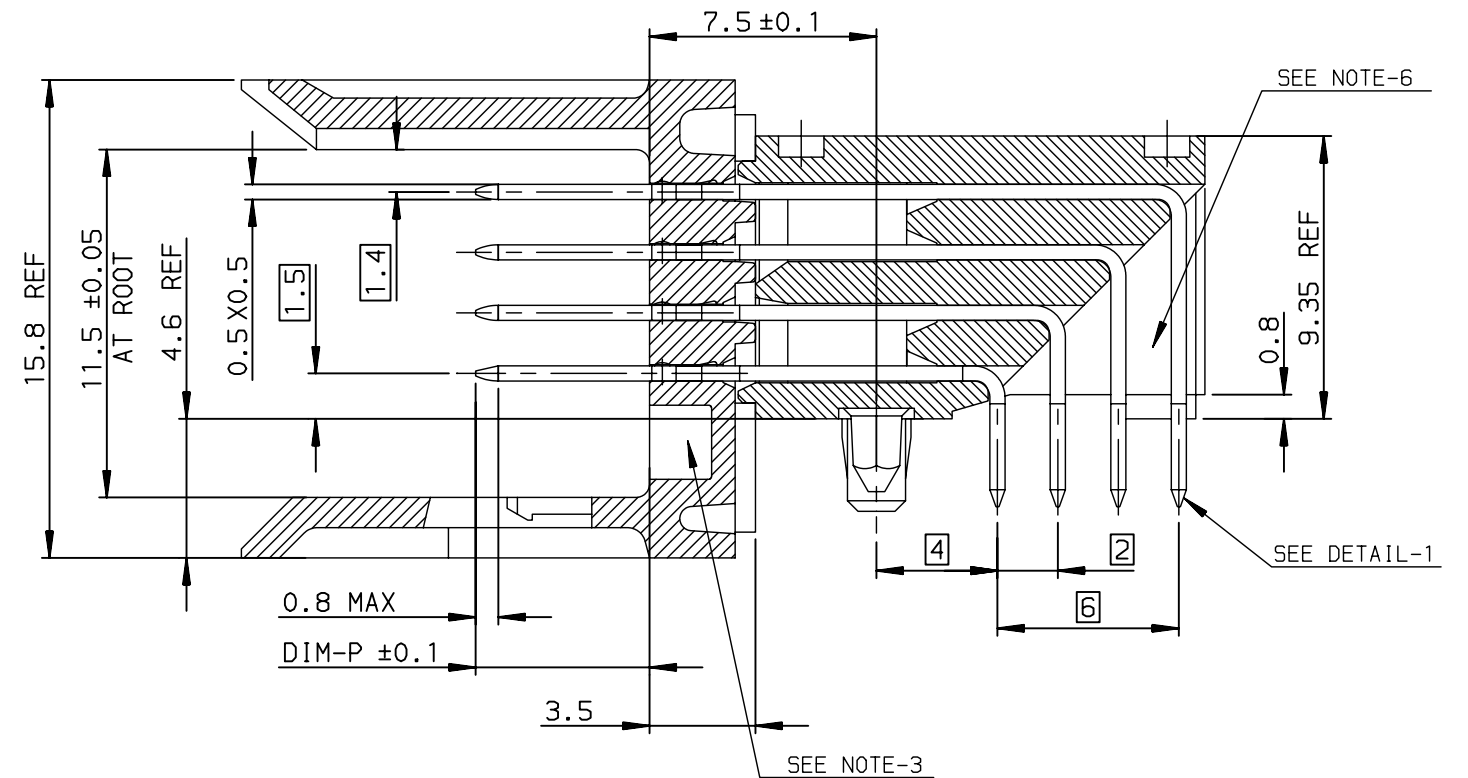
SEE NOTE-4

DETAIL-1: PRESS-FIT TAIL



- NOTE-1: NORMINATIVE REF = IEC-61076-4-104
NOTE-2: ONE CENTER PEG FOR HOLD DOWN FORCE
NOTE-3: CODING RECESS FOR 8MM EXTENDED KEYS
NOTE-4: PRODUCT MARKING = PRODUCT NUMBER + BATCH CODE + FCI
FOR 2 MODULE SIZE,END OF PART NUMBER ONLY
NOTE-6: CENTRAL WALL WITH END REAR SUPPORT
NOTE-7: PACKAGING IN TRAY + COVER
IF SUFFIX "P" IS ADDED IN P/N PACKAGING IS IN TRAYS
BUT CONNECTOR MARKING IS WITHOUT "P"
EXAMPLE: HM1XXXXXXXXXH6P, MARKED HM1XXXXXXXXXH6

SECTION-A SCALE:4/1



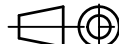


GENERAL CHARACTERISTICS AND ROHS INFORMATIONS:

SEE PRODUCT SPECIFICATION GS-12-445

OTHERS INFORMATIONS,SEE DRW C-8626-0151-2

European Views

rev	ecn no	dr	date
E	-	PCH	2004/07/09
F	LS05-0056	LGO	2005/07/06
G	LS06-0097	LGO	2006/07/12
H	LS07-0184	MLE	2007/07/25
-	-	-	-
-	-	-	-
-	-	-	-

www.fciconnect.com			surface ISO 1302		tolerance std ISO 406 ISO 1101		projection 	mm 	
			TOLERANCES UNLESS OTHERWISE SPECIFIED						
Dr	CHAMPION	1994/04/05	ANGULAR	LINEAR	0.X	±0.1	size A3	Scale 2.5	
Eng	LENOIR	1994/04/05			0.XX	±0.1			
Chr	LEGARE	1994/04/05			0.XX' ±2°	±0.1			
Appr	LEGARE	1994/04/05	Product family				METRAL	Spec ref -	
			title METRAL RA HDR WB CONV 4x12 CTS - PF - PUSH PEG				dwg no C-8626-0151-1	Rev. H	
			catalog no					-	CUSTOMER

TIN LEAD PART NUMBER

PART NUMBER / CONTACT LOADING							
DIM-P ±0.10					P/N AND PERFORMANCE LEVEL		SP N°
ROW-A	ROW-B	ROW-C	ROW-D				
5.00	5.00	5.00	5.00		HM1L42ADP000H6P		
5.75	5.75	5.75	5.75		HM1L42LDP000H6P		
6.50	6.50	6.50	6.50		HM1L42DDP000H6P		
6.50	5.00	5.00	5.00		HM1L42BDP000H6P		
6.50	5.75	5.75	6.50		HM1L42CDP000H6P		
5.00	5.00	6.50	5.00		HM1L42ZDP110H6P		110
5.00	5.75	6.50	5.00		HM1L42ZDP430H6P		430
5.00	5.75	5.00	5.00		HM1L42ZDP448H6P		448
5.75	5.00	5.00	5.00		HM1L42ZDP009H6P		009
5.75	6.50	5.75	5.00		HM1L42ZDP424H6P		424
6.50	5.75	6.50	5.75		HM1L42ZDP037H6P		037
6.50	5.75	5.00	5.75		HM1L42ZDP102H6P		102
6.50	6.50	6.50	5.75		HM1L42ZDP135H6P		135
6.50	5.75	5.75	5.75		HM1L42ZDP369H6P		369
8.00	6.50	6.50	6.50		HM1L42ZDPA07H6P		A07

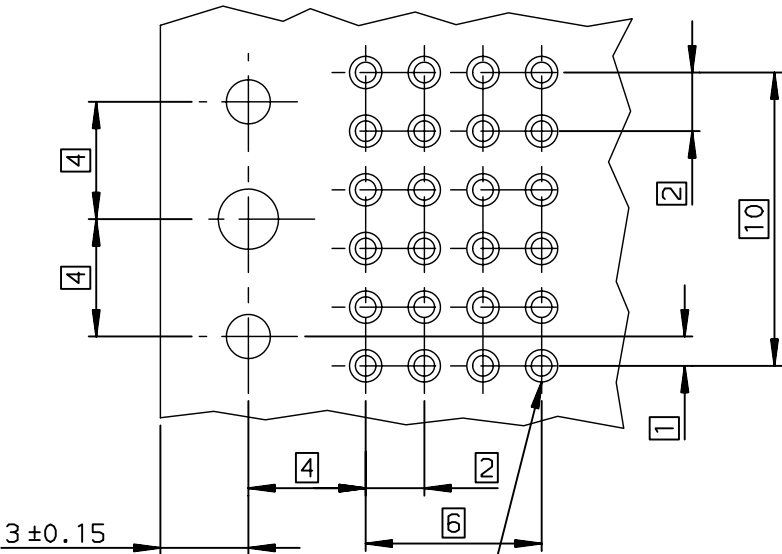
STANDARD MATING LENGTHS = 5.75 (AND 5.00-6.50)

LEAD FREE PART NUMBER

PART NUMBER / CONTACT LOADING							
DIM-P ±0.10					P/N AND PERFORMANCE LEVEL		SP N°
ROW-A	ROW-B	ROW-C	ROW-D				
5.00	5.00	5.00	5.00		HM1L42ADP000H6PLF		
5.75	5.75	5.75	5.75		HM1L42LDP000H6PLF		
6.50	6.50	6.50	6.50		HM1L42DDP000H6PLF		
6.50	5.00	5.00	5.00		HM1L42BDP000H6PLF		
6.50	5.75	5.75	6.50		HM1L42CDP000H6PLF		
5.00	5.00	6.50	5.00		HM1L42ZDP110H6PLF		110
5.00	5.75	6.50	5.00		HM1L42ZDP430H6PLF		430
5.00	5.75	5.00	5.00		HM1L42ZDP448H6PLF		448
5.75	5.00	5.00	5.00		HM1L42ZDP009H6PLF		009
5.75	6.50	5.75	5.00		HM1L42ZDP424H6PLF		424
6.50	5.75	6.50	5.75		HM1L42ZDP037H6PLF		037
6.50	5.75	5.00	5.75		HM1L42ZDP102H6PLF		102
6.50	6.50	6.50	5.75		HM1L42ZDP135H6PLF		135
6.50	5.75	5.75	5.75		HM1L42ZDP369H6PLF		369
8.00	6.50	6.50	6.50		HM1L42ZDPA07H6PLF		A07

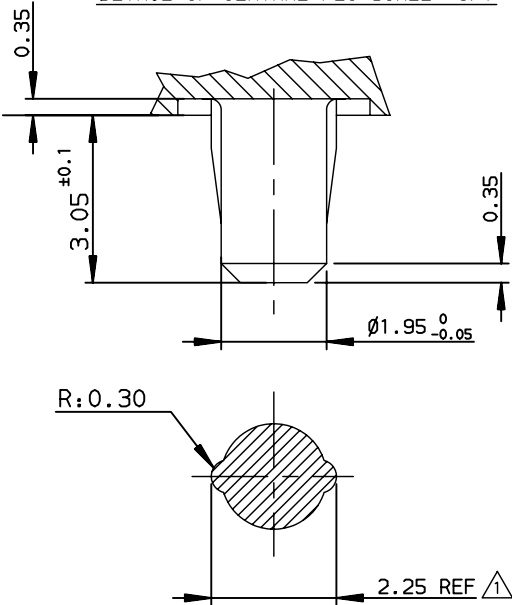
STANDARD MATING LENGTHS = 5.75 (AND 5.00-6.50)

RECOMMENDED PCB LAYOUT
PER 12MM LENGTH

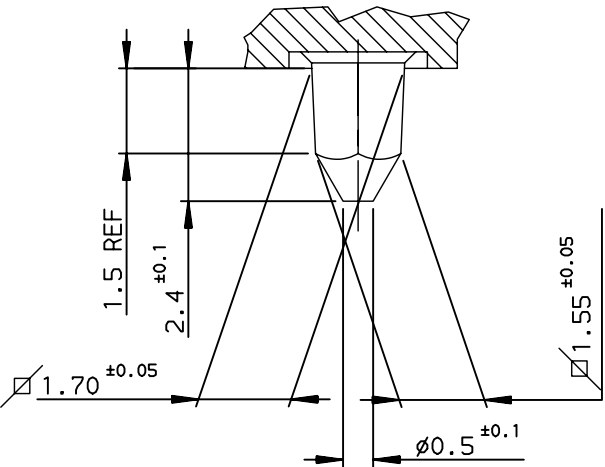


Hole according to product spec
GS-12-445 (for press-fit) ,
GS-12-446 (for STB)

DETAIL OF CENTRAL PEG SCALE 8/1






DETAIL OF LOCATING PEGS (2x) SCALE 8/1



OTHERS INFORMATIONS,SEE DRW 8626-0151-1

European Views

www.fciconnect.com			surface ISO 1302		tolerance std ISO 406 ISO 1101		projection 		 mm				
			TOLERANCES UNLESS OTHERWISE SPECIFIED										
Dr	CHAMPION	1994/04/05	ANGULAR		LINEAR		0.X		±0.1		size A3	Scale 4	
Eng	LENOIR	1994/04/05					0.XX		±0.1				
Chr	LEGARE	1994/04/05	0.XX' ±2°		0.XXX		±0.1		ECN			LS07-0184	
Appr	LEGARE	1994/04/05	Product family						METRAL		Spec ref -		
			title METRAL RA HDR WB CONV						dwg no C-8626-0151-2			Rev. H	
			4x12 CTS - PF - PUSH PEG										
catalog no			-						CUSTOMER			sheet 2 of 2	

rev	ecn no	dr	date
D	-	PCH	2003/03/17
F	LS05-0056	LGO	2005/07/06
G	LS06-0097	LGO	2006/07/12
H	LS07-0184	MLE	2007/07/24
-	-	-	-
-	-	-	-
-	-	-	-

