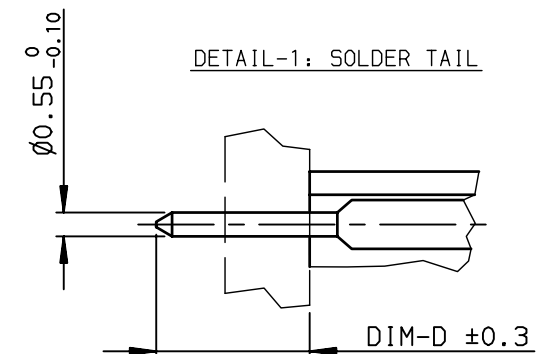
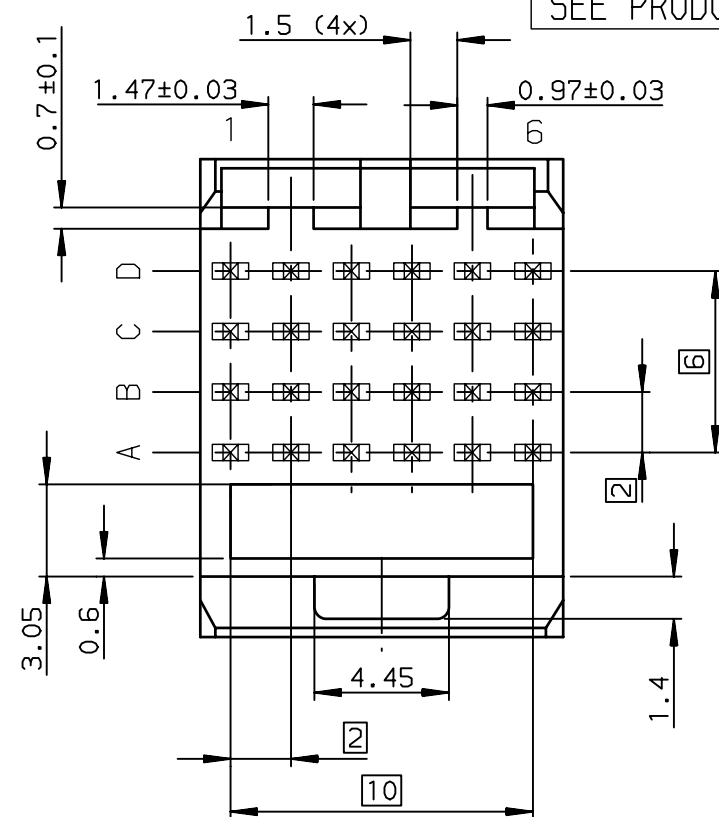


- NOTE-1: NORMINATIVE REF = IEC-61076-4-104  
NOTE-2: ONE CENTER PEG FOR HOLD DOWN FORCE  
NOTE-3: CODING RECESS FOR 8MM EXTENDED KEYS  
NOTE-4: PRODUCT MARKING = PRODUCT NUMBER + BATCH CODE + FCI  
FOR 1 MODULE SIZE,END OF PART NUMBER ONLY  
NOTE-6: CENTRAL WALL WITH END REAR SUPPORT  
NOTE-7: PACKAGING IN TRAY + COVER  
IF SUFFIX "P" IS ADDED IN P/N PACKAGING IS IN TRAYS  
BUT CONNECTOR MARKING IS WITHOUT "P"  
EXAMPLE: HM1XXXXXXXXXH6P, MARKED HM1XXXXXXXXXH6




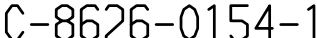
GENERAL CHARACTERISTICS AND ROHS INFORMATIONS:  
SEE PRODUCT SPECIFICATION GS-12-446



OTHERS INFORMATIONS,SEE DRW C-8626-0154-2

European Views

rev	ecn no	dr	date
G	-	CHA	2003/06/26
H	LS05-001	MRA	2005/01/19
J	LS05-0056	LGO	2005/07/06
K	LS06-0097	LGO	2006/07/12
L	LS07-0184	MLE	2007/07/24
-	-	-	-
-	-	-	-

www.fciconnect.com			surface ISO 1302		✓	tolerance std ISO 406 ISO 1101		projection 	 mm	
			TOLERANCES UNLESS OTHERWISE SPECIFIED							
Dr	CHAMPION	1994/04/06	ANGULAR	LINEAR	0.X	±0.1	size  A3	Scale 4		
Eng	LENOIR	1994/04/06			0.XX	±0.1		ECN LS07-0184		
Chr	LEGARE	1994/04/06			0.XX' ±2°	0.XXX			±0.1	
Appr	LEGARE	1994/04/06	Product family				METRAL	Spec ref -		
			title METRAL RA HEADER WB CONVE 4x6 CTS - STB - PUSH PEG					Rev. L		
			catalog no					-	CUSTOMER	

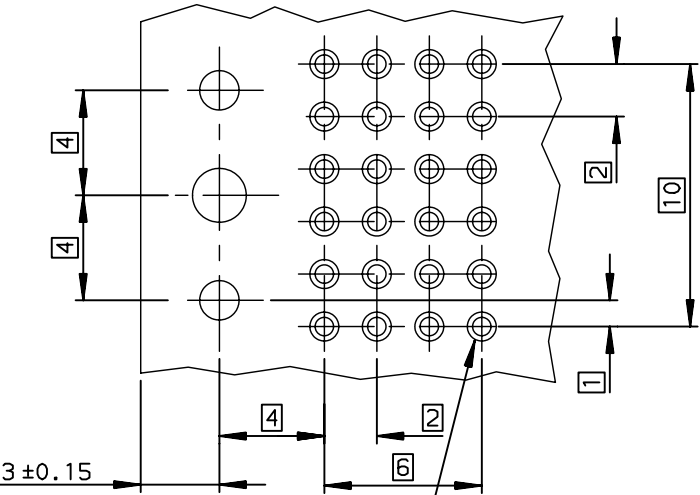
TIN LEAD PART NUMBER

PART NUMBER / CONTACT LOADING						
DIM-P ±0.10				DIM-D ±0.3	P/N AND PERFORMANCE LEVEL	
ROW-A	ROW-B	ROW-C	ROW-D			
5.00	5.00	5.00	5.00	TABLE-2	HM1L41AxP000H6P	
5.75	5.75	5.75	5.75	TABLE-2	HM1L41LxP000H6P	
6.50	6.50	6.50	6.50	TABLE-2	HM1L41DxP000H6P	
6.50	5.00	5.00	5.00	TABLE-2	HM1L41BxP000H6P	
6.50	5.75	5.75	6.50	TABLE-2	HM1L41CxP000H6P	
5.00	5.00	6.50	5.00	TABLE-2	HM1L41ZxP110H6P	110
5.00	5.75	6.50	5.00	TABLE-2	HM1L41ZxP430H6P	430
5.00	5.75	5.00	5.00	TABLE-2	HM1L41ZxP448H6P	448
5.75	5.00	5.00	5.00	TABLE-2	HM1L41ZxP009H6P	009
5.75	6.50	5.75	5.00	TABLE-2	HM1L41ZxP424H6P	424
6.50	5.75	6.50	5.75	TABLE-2	HM1L41ZxP037H6P	037
6.50	5.75	5.00	5.75	TABLE-2	HM1L41ZxP102H6P	102
6.50	6.50	6.50	5.75	TABLE-2	HM1L41ZxP135H6P	135
6.50	5.00	5.00	5.00	2.90	HM1L41ZAP239H6P	239
6.50	8.00	6.50	5.75	2.90	HM1L41ZAP329H6P	329
6.50	5.75	5.75	5.75	TABLE-2	HM1L41ZxP369H6P	369

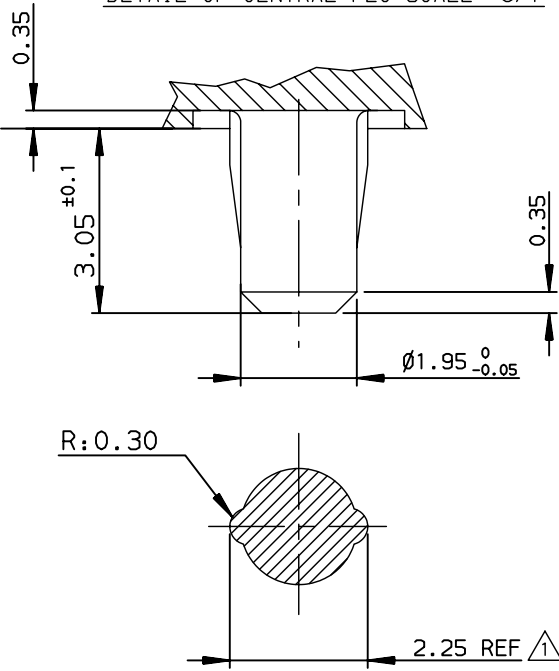
LEAD FREE PART NUMBER

PART NUMBER / CONTACT LOADING						
DIM-P ±0.10				DIM-D ±0.3	P/N AND PERFORMANCE LEVEL	
ROW-A	ROW-B	ROW-C	ROW-D			
5.00	5.00	5.00	5.00	TABLE-2	HM1L41AxP000H6PLF	
5.75	5.75	5.75	5.75	TABLE-2	HM1L41LxP000H6PLF	
6.50	6.50	6.50	6.50	TABLE-2	HM1L41DxP000H6PLF	
6.50	5.00	5.00	5.00	TABLE-2	HM1L41BxP000H6PLF	
6.50	5.75	5.75	6.50	TABLE-2	HM1L41CxP000H6PLF	
5.00	5.00	6.50	5.00	TABLE-2	HM1L41ZxP110H6PLF	110
5.00	5.75	6.50	5.00	TABLE-2	HM1L41ZxP430H6PLF	430
5.00	5.75	5.00	5.00	TABLE-2	HM1L41ZxP448H6PLF	448
5.75	5.00	5.00	5.00	TABLE-2	HM1L41ZxP009H6PLF	009
5.75	6.50	5.75	5.00	TABLE-2	HM1L41ZxP424H6PLF	424
6.50	5.75	6.50	5.75	TABLE-2	HM1L41ZxP037H6PLF	037
6.50	5.75	5.00	5.75	TABLE-2	HM1L41ZxP102H6PLF	102
6.50	6.50	6.50	5.75	TABLE-2	HM1L41ZxP135H6PLF	135
6.50	5.00	5.00	5.00	2.90	HM1L41ZAP239H6PLF	239
6.50	8.00	6.50	5.75	2.90	HM1L41ZAP329H6PLF	329
6.50	5.75	5.75	5.75	TABLE-2	HM1L41ZxP369H6PLF	369

RECOMMENDED PCB LAYOUT



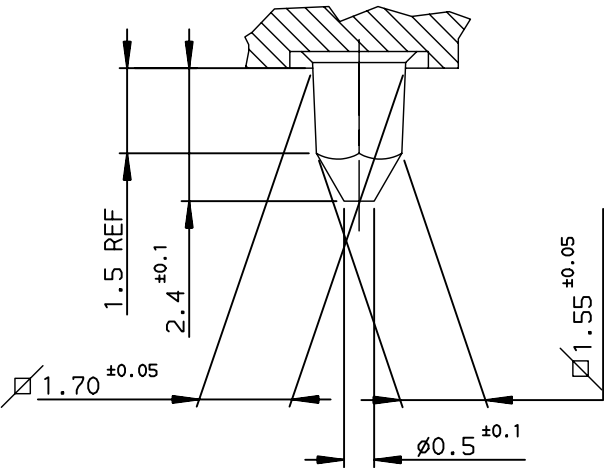
DETAIL OF CENTRAL PEG SCALE 8/1



DIM-D=2.9 / replace 'x' by 'A' in the P/N  
DIM-D=3.7 / replace 'x' by 'B' in the P/N




TABLE-2

DETAIL OF LOCATING PEGS (2x) SCALE 8/1



OTHERS INFORMATIONS,SEE DRW C-8626-0154-1

European Views

www.fciconnect.com			surface ISO 1302		tolerance std ISO 406 ISO 1101				
			TOLERANCES UNLESS OTHERWISE SPECIFIED						
Dr	CHAMPION	1994/04/06	ANGULAR	LINEAR	0.X	±0.1	size A3	Scale 4	
Eng	LENOIR	1994/04/06			0.XX	±0.1			
Chr	LEGARE	1994/04/06			0.XX' ±2°	0.XXX			±0.1
Appr	LEGARE	1994/04/06	Product family METRAL				ECN LS07-0184		
			Spec ref -						
			title METRAL RA HDR WB CONV 4x6 CTS - STB - PUSH PEG				dwg no C-8626-0154-2		Rev. L
			catalog no		-		CUSTOMER		sheet 2 of 2

rev	ecn no	dr	date
F	-	PCH	2003/03/14
J	LS05-0056	LGO	2005/07/06
K	LS06-0097	LGO	2006/07/12
L	LS07-0184	MLE	2007/07/24
-	-	-	-
-	-	-	-
-	-	-	-

