

## HYPER-MINIATURE PUSHBUTTON SWITCHES

FP

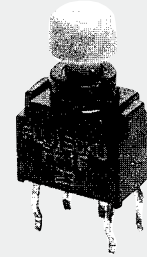
## ■ FEATURES

- It is of ultra-compact type. The volumetric ratio is half that of the conventional Series A.
- Immersion cleaning is possible after soldering.
- Terminal mounting is at 0.1-inch pitches.
- Independent detent mechanism provides light feel operability.
- Regarding the contact reliability, a long-term stability is assured by the clip contact.
- Gold plated contacts.

## ■ SPECIFICATIONS

Rating	Max.	0.4VA (28VDC max.)
	Min.	1 $\mu$ A 20mVDC
Initial contact resistance	100m $\Omega$ max (1.5mA 200 $\mu$ VAC)	
Dielectric strength	250VAC 1 minute	
Insulation resistance	500M $\Omega$ min. (250VDC)	
Electrical life	10,000 operations at max. rating,	
Operating force	1.47 $\pm$ 0.98N	
Operating temperature range	-40 $\sim$ +85 $^{\circ}$ C	
Storage temperature range	-40 $\sim$ +85 $^{\circ}$ C	

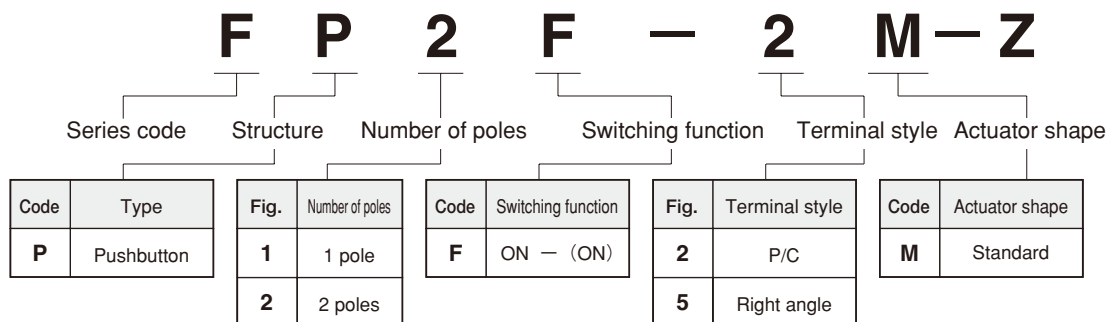
RoHS compliant



## ■ TABLE OF PART NUMBERS

Number of poles	Switching function	P/C terminal	Right angle
1	ON - (ON)	FP1F-2M-Z	FP1F-5M-Z
2	ON - (ON)	FP2F-2M-Z	FP2F-5M-Z

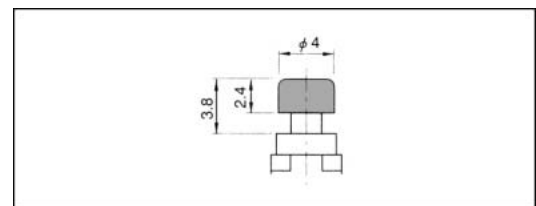
## ■ PART NUMBERING



## ■ OPTIONAL ACCESSORIES

Part Name	Dimension	Color	Part Number
Color Cap		White	140000481453
		Red	140000481452
		Black	140000481451
		Gray	140000481450

## ■ COLOR CAP MOUNTING



※Please contact us if you can't find your preferable combination in the table of part numbers.

# FP

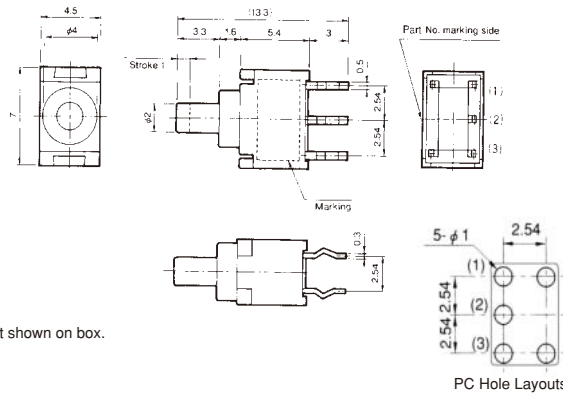
## HYPER-MINIATURE PUSHBUTTON SWITCHES

### OUTLINE DIMENSIONS

#### SPDT PC



Terminal number not shown on box.

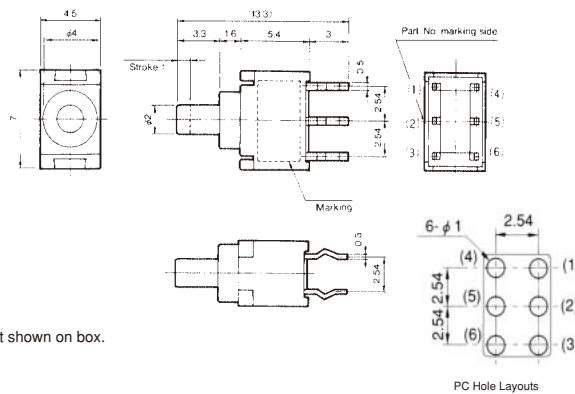


Switching function		
Part No.		
<b>FP1F-2M-Z</b>	ON	(ON)
Connecting terminals	2-3	2-1

#### DPDT PC

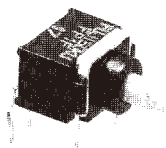


Terminal number not shown on box.

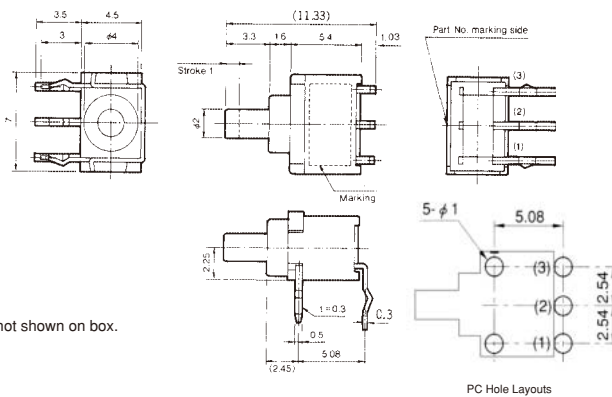


Switching function		
Part No.		
<b>FP2F-2M-Z</b>	ON	(ON)
Connecting terminals	2-3 5-6	2-1 5-4

#### SPDT R/A



Terminal number not shown on box.

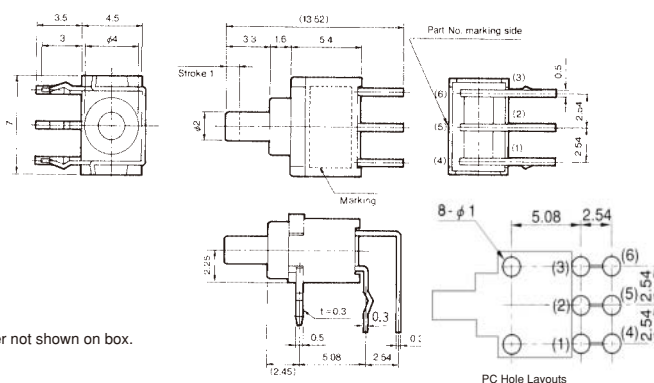


Switching function		
Part No.		
<b>FP1F-5M-Z</b>	ON	(ON)
Connecting terminals	2-3	2-1

#### DPDT R/A



Terminal number not shown on box.



Switching function		
Part No.		
<b>★FP2F-5M-Z</b>	ON	(ON)
Connecting terminals	2-3 5-6	2-1 5-4

Gray-lined is the switch outline.

(ON) : Momentary

# FP

## HYPER-MINIATURE PUSHBUTTON SWITCHES

### ■ PRECAUTIONS

#### 1. Soldering

(1) Hand soldering

Device : Solder iron

380 °C Max. 3 sec. Max.

(2) Auto soldering

Device : Wave or dip type

275 °C Max. 6 sec. Max.

Preheat should be within 80-120 °C, 120 sec.

(3) When soldering two or more terminals to the common land, use solder resist to solder them independently.

#### 2. Flux Cleaning

(1) Solvents : Fluorine or Alcohol type

(2) Cleaning shall be made when terminal temperature falls to 90 °C or lower. Or, leave the switch at normal temperature for 5 minutes or longer, before cleaning.

(3) Do not apply ultrasonic cleaning.

### ■ PACKAGING SPECIFICATION

