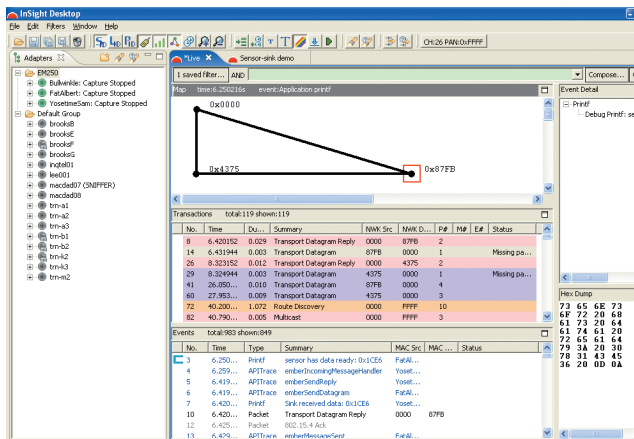


InSight Development Kit

Complete Development Tools for Embedded Wireless Applications

Tools

Fact Sheet



InSight Desktop

Embedding Value through Wireless Connectivity

The premier set of embedded wireless networking tools developed specifically for OEMs, the Ember InSight Development Kit includes hardware, networking stack, and development and debugging software for building embedded applications—everything you need to build intelligent, robust, decentralized device networks into your products. The software package includes a service-aware API that simplifies code development and lets you focus on your embedded applications. The Ember API is consistent across all EmberZNet products, providing an easy-to-use interface for rapid and uniform application development across the Ember platforms.

Ember's customers are saying

"...We broke a record in our company for application development..."

"...It is as close to "plug-and-play" as anything I have seen in the industrial world..."

Some customers develop embedded devices with a single microprocessor controlling all aspects of the application, including the radio. Other customers have more complex or processing-intensive applications that require a two-processor approach. In either case, Ember's communications API facilitates the development of self-organizing, self-healing, peer-to-peer networks targeted to specific customer requirements. It contains libraries for EmberZNet's mesh-, star-, and hybrid-networks. To achieve efficient messaging in complex networks, the communications API allows developers to build the most effective network for the application.

Ember's flexible approach to network organization is made possible through the use of multiple message types. For example, broadcast and unicast message types support traditional mesh networking, while a special data aggregator message type reduces memory demands in large sensor networks. The API provides calls corresponding to each message type, making the libraries easy to learn and use.

(Continued on reverse)



(Continued from front)

Combined with Ember's commitment to service, support and training, the Ember InSight Development Kit gives you all the tools you need to create Ember Enabled products that form reliable, flexible, secure and useful device networks. Port your application expertise onto our infrastructure and you'll do more with your device network than you may have ever imagined, more easily and effectively than ever before.

Specifications

Full Development Kit

Hardware

- EM250 / EM260 Radio Control Modules (RCM) Board (8)
- EM250 / EM260 Breakout Board (8)
- EM250 / EM260 InSight Adapter (8)
- MC Card to SMA Cable (1)
- InSight Port Cable (8)
- Power Supplies and Battery Pack (8)
- Extended Debug Cable (8)
- 16 Port Switch w/ 8 x POE ports (1)

Software

- InSight Desktop Professional Edition (1 Seat)
- xIDE Compiler

Support & Maintenance

- InSight Desktop Maintenance (1 Year)

Training

- 2 Day Training (1 Seat)

Training

Ember considers training to be a crucial component of the developer kit offering. The two day hands-on training program is designed to give the developer a head start in building applications on the EmberZNet platform. Training is offered at Ember locations as well as on-site.

JumpStart Kit

Hardware

- EM250 / EM260 Radio Control Modules (RCM) Board (3)
- EM250 / EM260 Breakout Board (3)
- EM250 / EM260 InSight Adapter (3)
- MC Card to SMA Cable (1)
- InSight Port Cable (3)
- Power Supplies and Battery Pack (3)
- Extended Debug Cable (3)
- 8 Port Switch w/4 x POE ports (1)

Software

- InSight Desktop Developer Edition (1 Seat)
- xIDE Compiler

Support & Maintenance

- InSight Desktop Maintenance (6 months)

About Ember

Ember develops wireless sensor and control network technologies that help make our living and working environments safer, smarter, more comfortable and energy efficient. Ember's ZigBee-based semiconductors and software enable communication between devices embedded in a variety of building and home automation products. Ember is a lead member of the ZigBee Alliance, and its platform is the National Technical Systems' (NTS) "Golden Suite" for 802.15.4/ZigBee interoperability testing.

US Headquarters:

47 Farnsworth St.
Boston, MA 02210
USA
+1 617 951 0200
www.ember.com

European office:

Cambridge Science Park
Unit 300, Milton Rd.
Cambridge, CB4 0XL, UK
+44 (0) 1223 423322
www.ember.com

Asian office:

22/F, 3 Lockheart Rd.
Wanchai, Hong Kong
China
852-2862 8075
www.ember.com

ember
www.ember.com

TECH-800-2420-0504

Information contained in this document is subject to change without notice and is presented without express or implied warranty. Ember, EmberZNet and InSight are trademarks of Ember Corporation. All other trademarks are the property of their respective owners. Copyright 2007, Ember Corporation. All rights reserved.