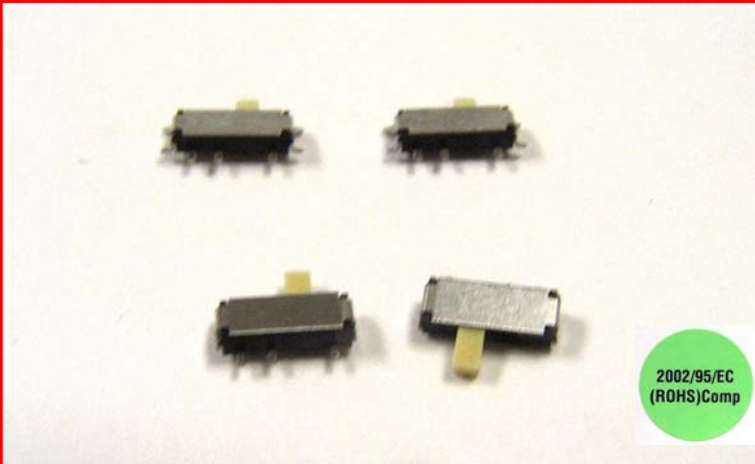


EG1260 SMT Slide Switch



MECHANICAL SPECIFICATIONS

Mechanical Life:	10,000 cycles
Electrical Life:	10,000 cycles
Termination:	Surface Mount Only
Typical Actuator	
Travel:	Push: 1.5mm
Actuation Force:	150 +/- 100 grams
Sealing:	None
Packaging:	Tape and Reel
Function:	SPDT

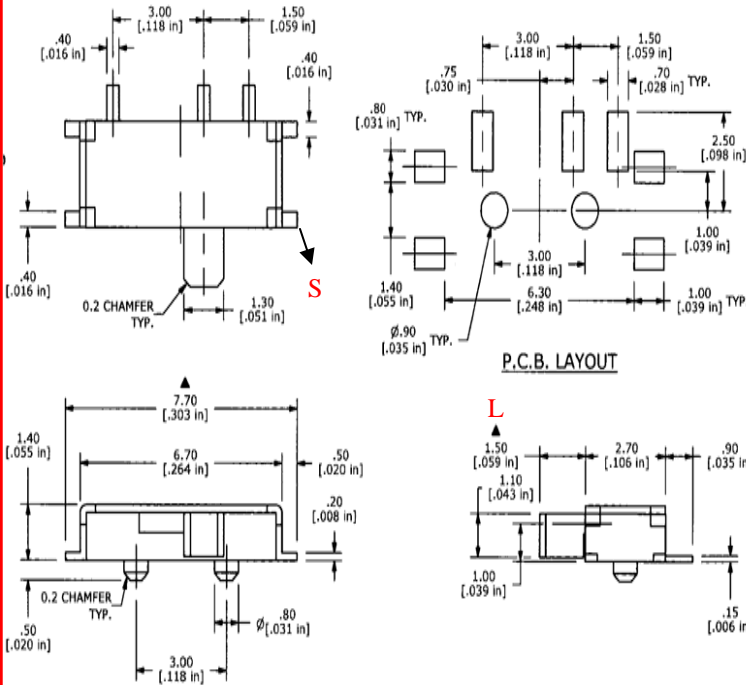
ELECTRICAL SPECIFICATIONS

Contact Rating:	4VDC, .3A
Contact Resistance (Initial Max.):	70 mOhm
Insulation Resistance (min @ 100V):	100M Ohms.
Dielectric Strength:	100VAC
Plating:	Silver

ENVIRONMENTAL SPECIFICATIONS

Operating Temp:	-10C to +60C
Storage Temp:	-10C to +60C

Materials:
Contact: Silver Plating over Copper alloy



How To Order

SERIES

EG

MODEL

1260

**ACTUATOR
LENGTH "L"**

A = 1.50MM
B = 2.30MM
C = 1.50MM WITH
.40 THICKNESS

TERMINATION

N = No Support
S = Support
Terminal

**CONTACT
MATERIAL**

Q = Silver