



# AC/DC Hall Effect Current Transducer

DIN RAIL / PANEL MOUNT, TRACING OUTPUT

The **CR5400** Series, AC/DC Hall Effect Current Transducers, are designed to provide a bipolar output that proportionally reflects (traces) the waveform of the input current. These devices are specifically targeted to be used in applications where multi-mode current sensing is required.

## Applications

- Inverter and multi-frequency drives
- Multi-mode ground paths carrying both AC and DC signals
- Feed back loop building block

## Features

- Output isolated from input
- Non-contact current sensing
- 35mm DIN Rail or Panel Mount
- Connection diagram printed on case



**CR5410**  
.79" Window

See page 35 for typical applications

Internet Resources <http://www.crmagnetics.com/>

Pricing: [pricing/5400.html](#)

## Part Numbers

**CR5410** - ☐  $\pm 5$  Vac/dc output

☐ Add suffix for input range

### .79" Window

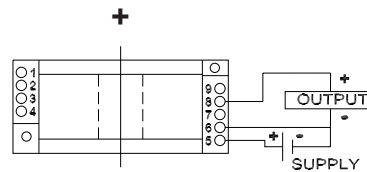
<b>20</b>	-	$\pm 20$ A ac/dc
<b>30</b>	-	$\pm 30$ A ac/dc
<b>50</b>	-	$\pm 50$ A ac/dc
<b>75</b>	-	$\pm 75$ A ac/dc
<b>100</b>	-	$\pm 100$ A ac/dc
<b>150</b>	-	$\pm 150$ A ac/dc
<b>300</b>	-	$\pm 300$ A ac/dc

# AC/DC Hall Effect Current Transducer

## Specifications

Basic Accuracy:.....	1.0%	Supply Voltage:.....	24 Vdc $\pm 10\%$
Thermal Drift:.....	500 PPM/°C	Frequency Range:.....	DC - 4 KHz
Operating Temperature:.....	0°C to +50°C	Output:.....	$\pm 5$ Vac/DC
Insulation Voltage:.....	2500 Vdc	Output Load:.....	2 K $\Omega$ or greater
MTBF:.....	Greater than 100 K hours		

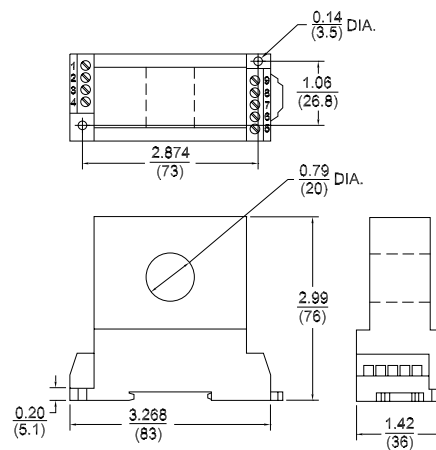
## Connection Drawing



**CR5410**

$\pm 5$  Vac/DC Output

## Outline Drawing



inch (mm)