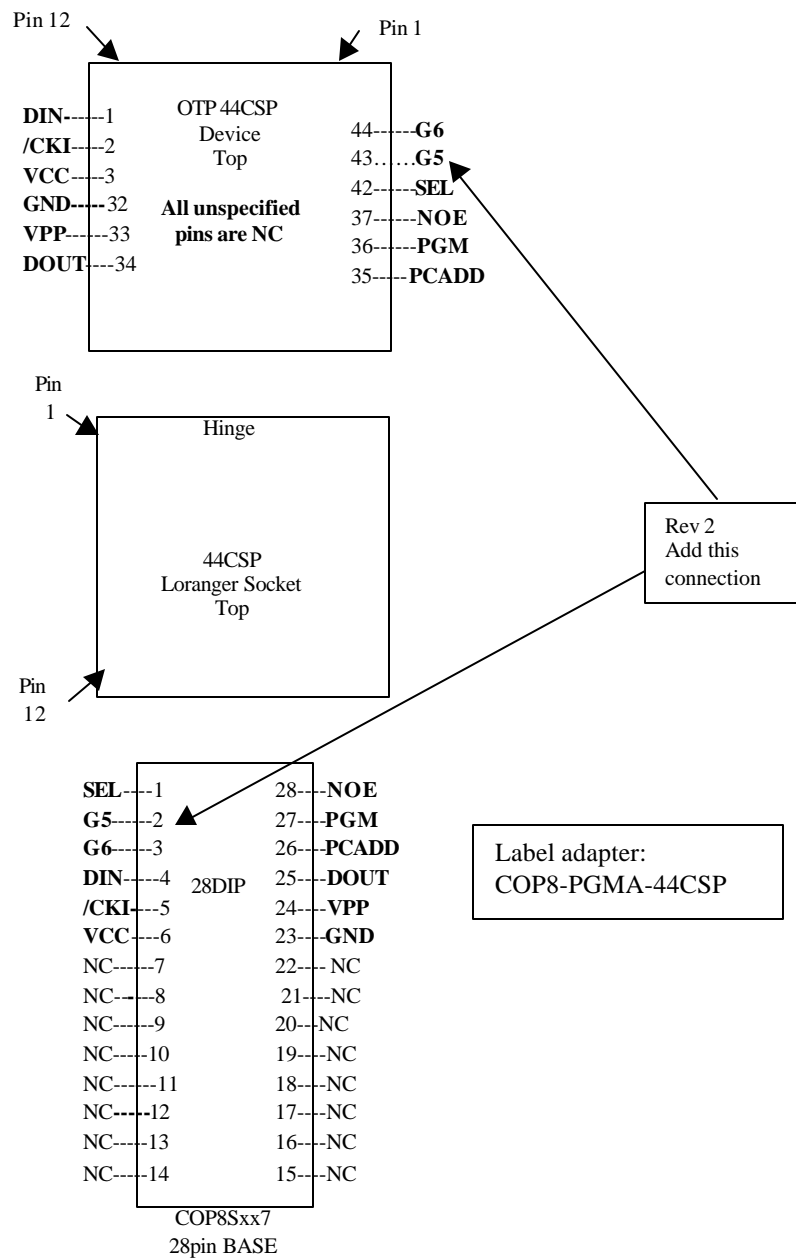


National Semiconductor
AnalogMicroControllers Group

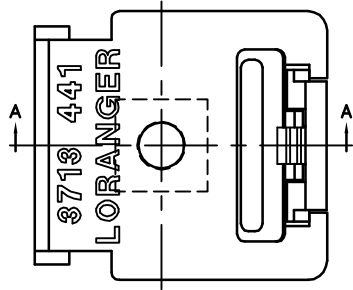
COP8-PGMA-44CSP
Programming Adapter for COP8 OTP devices in 44CSP
(COP8SAx7, COP8SGx7)
Rev 2, 8/30/00

NOTE: COP8 flash device 44CSP adapter is different: COP8-PGMA-44CSF

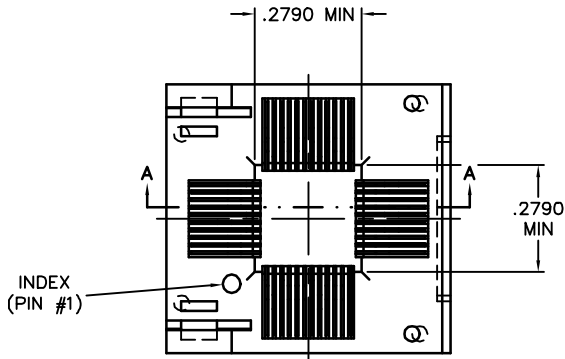
This adapter uses the same form-factor as the COP8-PGMA-28CSP, but with a 44pin socket instead. Only 12 pins are connected. Check the socket drawing for pin 1 location, which is different from the 28CSP socket.



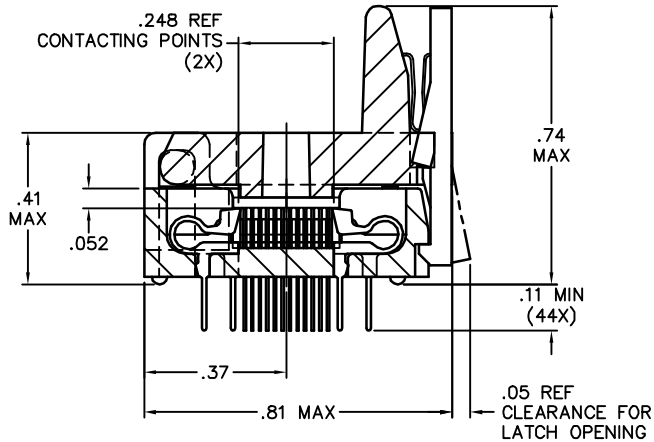
REVISION		
symbol	description	initial/date



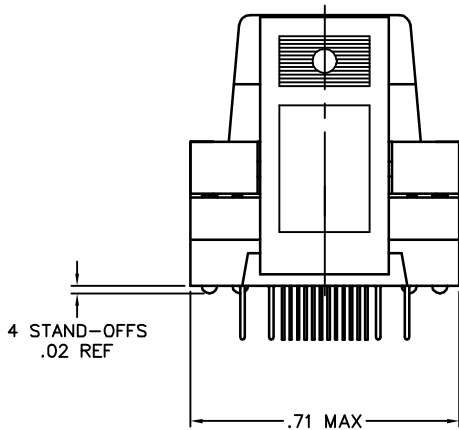
TOP VIEW COVER



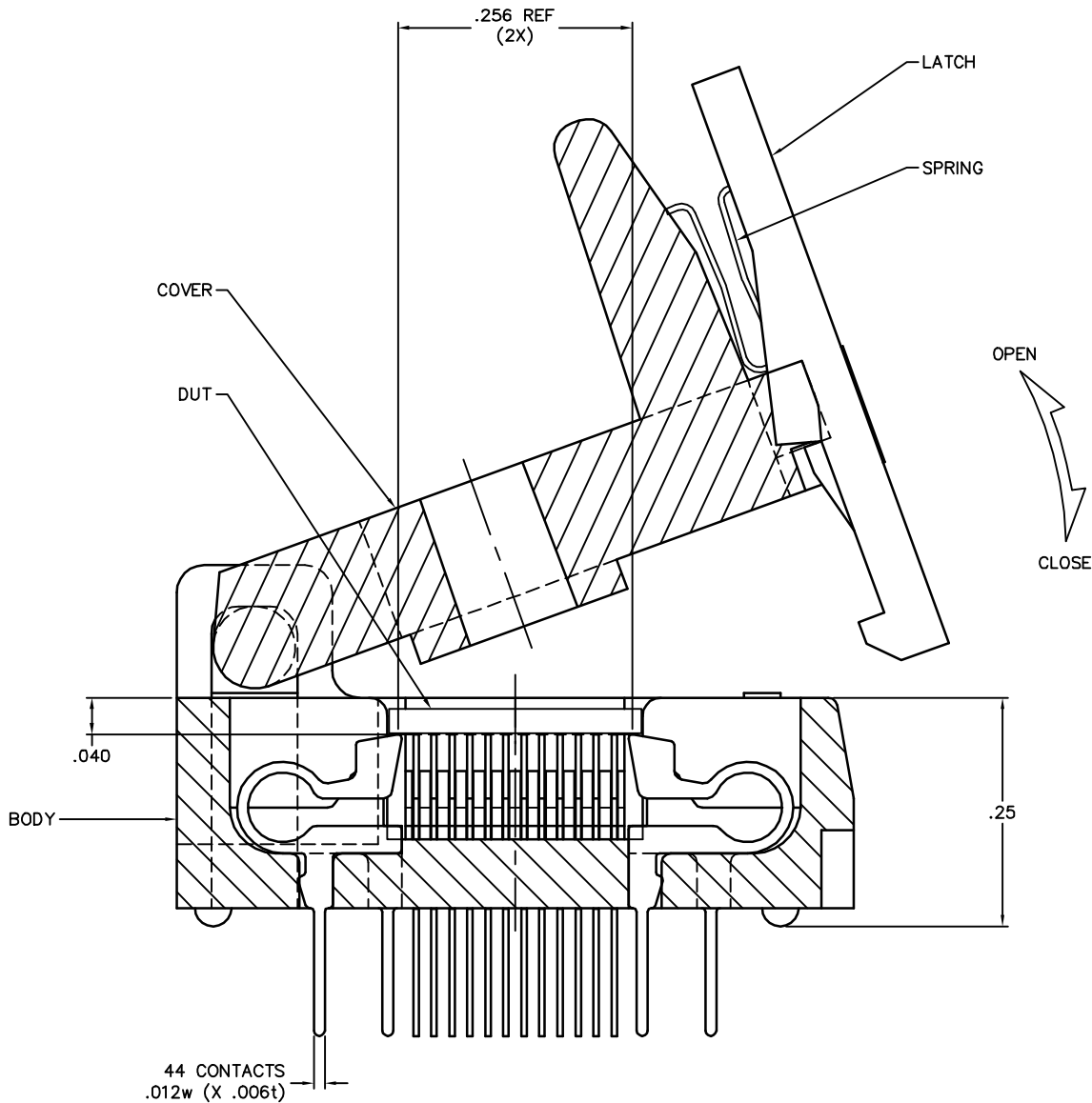
TOP VIEW WITH COVER REMOVED



SECTION "A"-"A"
(SOCKET CLOSED)



FRONT VIEW



SECTION "A"-"A"
(SOCKET OPENING)
(SCALE: 5/1)

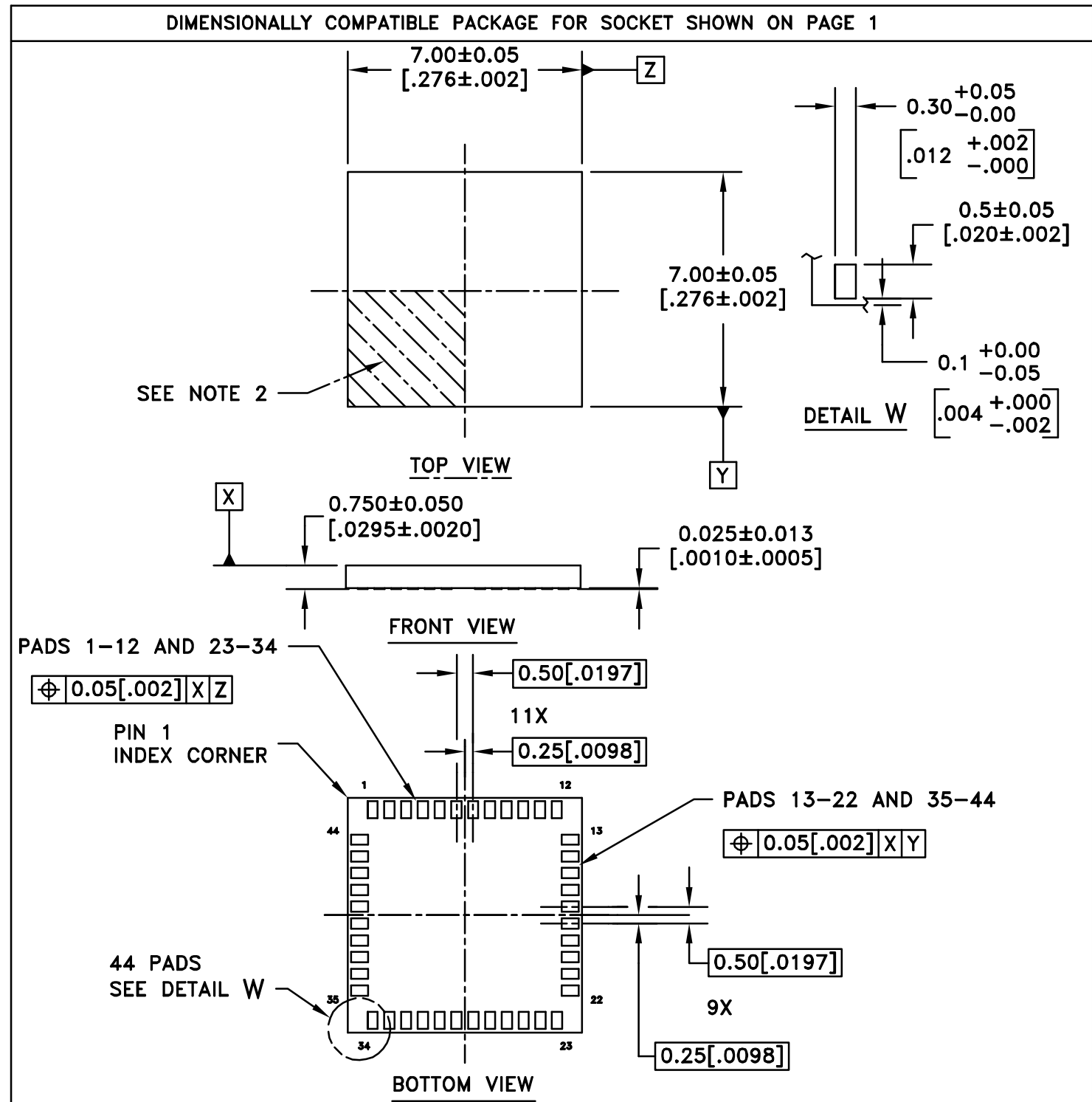


Tolerance In Inches
 .xx±.01 fract.
 .xxx±.005 ang.±1/2°
 .xxxx±.0010

SCALE
 2/1

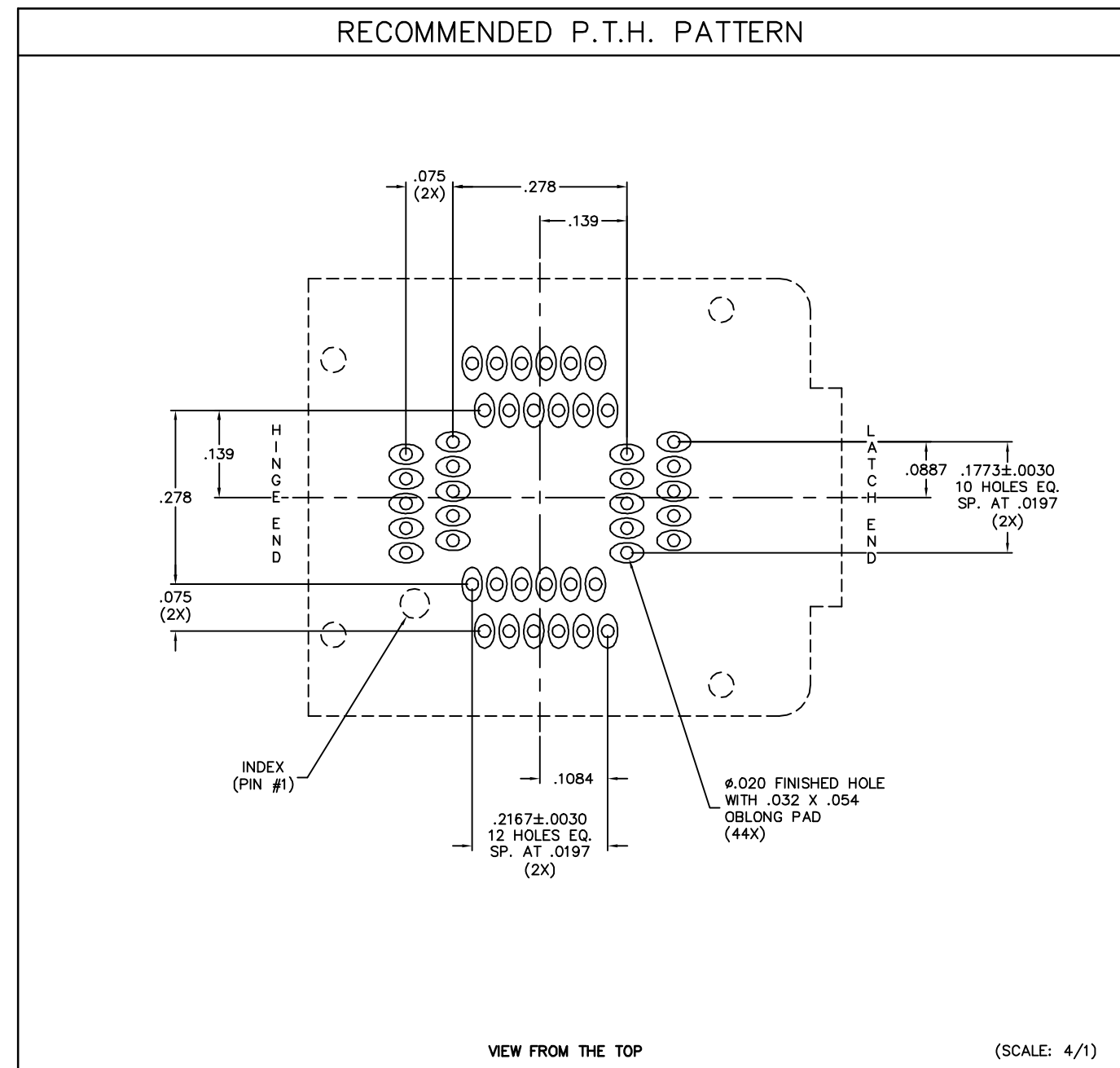
NOTICE
 Drawing is subject to change without notice and is L.I.C. proprietary in design and content. L.I.C. retains all patent rights and exclusive rights of use, manufacture and/or sale. Possession of this drawing does not convey permission to reproduce or manufacture article. Permission shall only be granted in writing and must be signed by an officer of L.I.C.


Equipment where used		44 LEAD, 7 X 7mm, 0.5mm PITCH CSP		PROD. NO.03713 441 6217	
Part Description		SOCKET		DWG. NO.03713 441 6217	
DRAFTED by/date	CHECKED by/date	ISSUE DATE	PAGE NO. 1 OF 2	FILE NO. 3713441	
SBR/1-25-00					



- NOTES:
1. INTERPRET DRAWING IN ACCORDANCE WITH ASME Y14.5M-1994
 2. A PIN 1 IDENTIFYING FEATURE IS TO BE APPLIED IN THE GENERAL AREA SHOWN. SIZE, STYLE, AND LOCATION OPTIONAL, BUT THE FEATURE MUST NOT PROJECT ABOVE THE PACKAGE TOP.
 3. IN THIS PANEL CONTROLLING DIMENSIONS ARE IN MM, AND ANGLE TOL IS ±0.5°
 4. THIS DEVICE PACKAGE IS BASED, IN PART, ON INFORMATION CONTAINED IN CUSTOMER-SUPPLIED DRAWING(S), HOWEVER IT ADDITIONALLY CONTAINS FEATURE CONTROLS AND TOLERANCING REQUIRED FOR COMPATIBILITY WITH THE L.I.C. SOCKET DRAWN ON PAGE 1. THE CUSTOMER IS ADVISED TO REVIEW THIS DEVICE PACKAGE DRAWING THOROUGHLY BEFORE APPROVING TO ASSURE THAT MANUFACTURING REALITIES AGREE WITH THE DESIGN NEEDS.
 5. DEVICE REFERENCE FOR THIS PACKAGE IS NATIONAL 44/PRECISION DESIGN

REVISION		
symbol	description	initial/date



 Tolerance In Inches .xx±.01 fract. .xxx±.005 ang.±1/2° .xxxx±.0010		NOTICE Drawing is subject to change without notice and is L.I.C. proprietary in design and content. L.I.C. retains all patent rights and exclusive rights of use, manufacture and/or sale. Possession of this drawing does not convey permission to reproduce or manufacture article. Permission shall only be granted in writing and must be signed by an officer of L.I.C.	
		Equipment where used 44 LEAD, 7 X 7mm, 0.5mm PITCH CSP	PROD. NO.03713 441 6217
SCALE NOTED		Part Description SOCKET	DWG. NO.03713 441 6217
Orig. Release	DRAFTED by/date SBR/1-25-00	CHECKED by/date	ISSUE DATE
PAGE NO. 2 OF 2		FILE NO. 3713441	