

REQUIREMENTS

Technical characteristics:

Shell: steel tin plated  
Insulators: self-extinguishing thermoplastic, UL class 94V0  
Contacts: phosphor bronze, gold over 2 microns mini nickel on active area and flash to 1.5 micron maxi SnPb over 1 micron mini nickel on termination  
Cycles: 500min  
gauge retention force: 0.14N

Press fit connectors:

Insertion force: 100N maxi per contact  
Extraction force: 30N mini in SnPb hole  
20N mini in pure Tin hole  
15N mini in Copper hole

Accessories:

Threaded insert: M3 brass  
retention against torque 0.7 N.m minimum  
Grounding strip: phosphor bronze, tin plated

Electrical characteristics:

Max current rating: 2.5A  
Test voltage: 750V  
Rated voltage: 300V  
Contact resistance: <35 mOhm  
Shell resistance: <5 mOhm  
Insulation resistance: >5000 MOhm

Climatic characteristics:

Operating temperature range: -55°C + 125°C  
Industrial atmosphere (bellcore test)  
4 gases, 10 days

Marking:

Ink marking on front shell  
Logo, reference FCI, code year-week

Packaging

In tray according to specification EUR-14-015

Dimensions:

In accordance with MIL-DTL-24308B

PLATING FOR TIN VERSIONS, TERMINATIONS LF ONLY

**NOTE RoHS INFORMATION**  
- The "LF" products meet European union Directives and other country regulations as described in GS-22-008  
- Active Part : Gold over Nickel  
- Termination plating spec: 0.5 to 3 µm Nickel, 0.5 to 1.5 µm Sn  
- Shell plating: 2 to 4 µm Cu + 3 to 10 µ Sn (pure bright)  
- Accessories: Sn pure bright  
- Packaging spec: see GS-14-920

TIN LEAD PART NUMBER

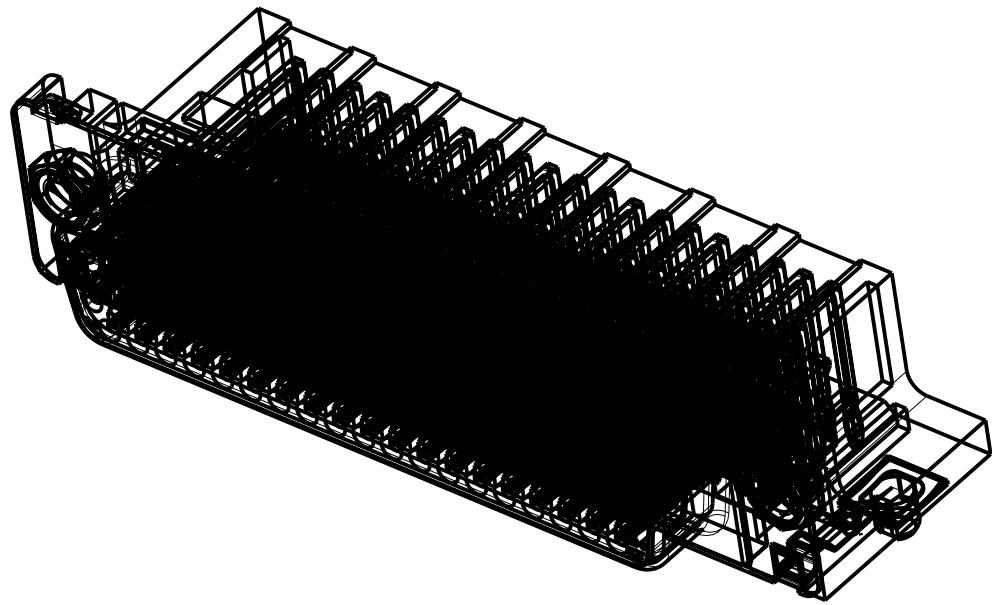
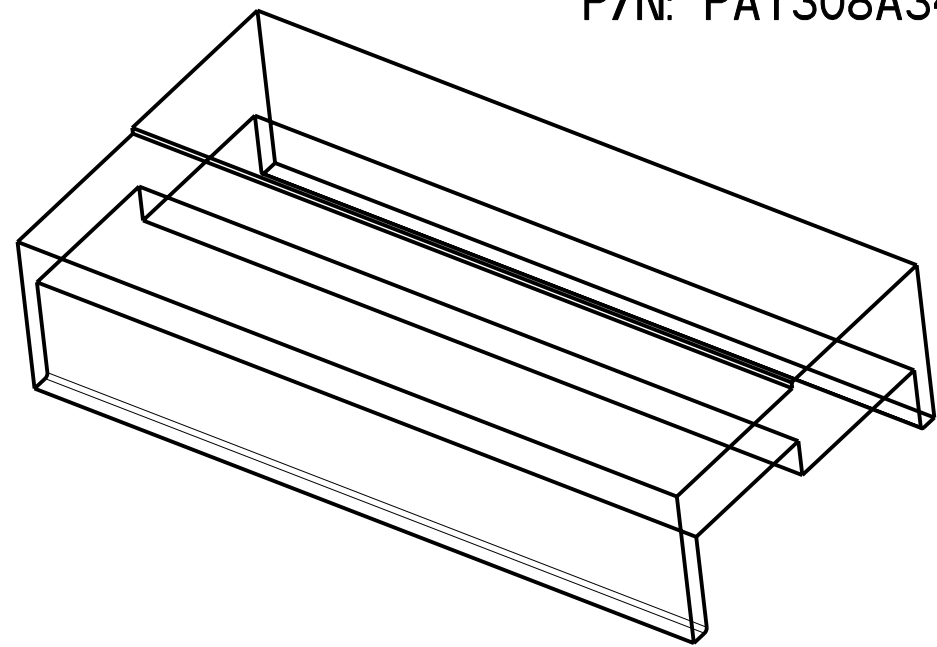
Part Number	CD78S80C6GL00
-------------	---------------

LEAD FREE PART NUMBER

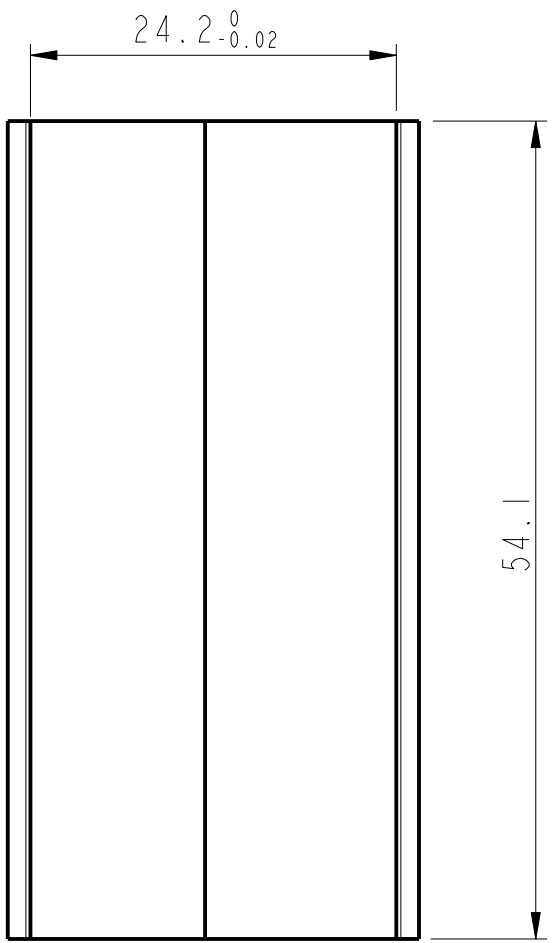
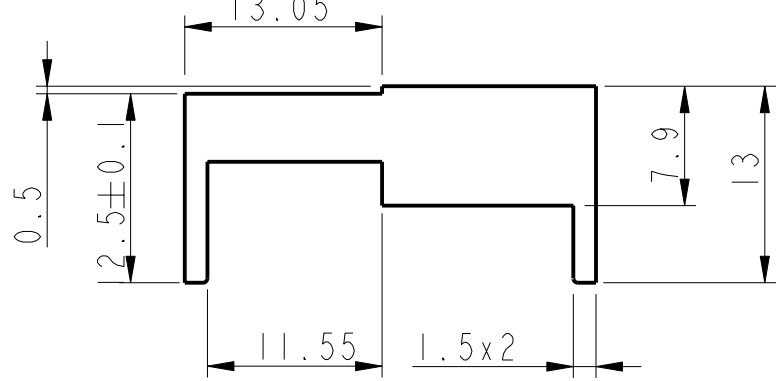
Part Number	CD78S80C6GL00LF
-------------	-----------------

INTERMEDIATE PUSH BLOCK FOR INSERTION CONNECTOR ON PCB

P/N: PAY308A342



SCALE 2:1



		HOLE PRESS-FIT CONTACT SnPb	HOLE PRESS-FIT CONTACT Sn	HOLE PRESS-FIT HARPOONS SnPb	HOLE PRESS-FIT HARPOON Sn	HOLE PRESS-FIT CONTACT Copper OSP	HOLE PRESS-FIT HARPOON Copper OSP
P.C.B. HOLE DEFINITION (NOTE -1 AND -2)	DRILL DIAMETER	Ø 1.15 REF (NOTE -3)	Ø 1.15 REF (NOTE -3)	Ø 3.22 REF (note-3)	Ø 3.22 REF (note 3)	Ø 1.15 REF (note 3)	Ø 3.22 REF (note-3)
	DRILLED HOLE	Ø 1.12 -1.18	Ø 1.12 -1.18	Ø 3.19-3.25	Ø 3.19-3.25	Ø 1.12-1.18	Ø 3.19-3.25
	COPPER PLATING	25µ mini-50µ maxi	25µ mini- 50µ maxi	25µ mini-50µ maxi	25µ mini-50µ maxi	25µ mini-50µ maxi	25µ mini-50µ maxi
	TIN LEAD PLATING	5µ mini - 15µ maxi		5µ mini-15µ maxi			
	PUR TIN PLATED		0.8 mini to 1.2µ maxi		0.8µ mini-1.2µ maxi		
	OSP PLATING(copper)					0.20µ mini-0.5µ maxi	0.20µ mini-0.5µ maxi
	FINISH HOLE(note 4)	Ø 0.94-1.09	Ø 1.00-1.09	Ø 3.02-3.20	Ø 3.08-3.20	Ø 1.01-1.09	Ø 3.09-3.20

NOTE-1: THESE DIMENSIONS MUST BE RESPECT TO SECURE PRESS-FIT PIN PERFORMANCES.  
NOTE-2: ACCORDING TO IEC -352-5 SPEC.  
NOTE-3: MAJOR REQUIREMENT FOR PRESS-FIT PIN PERFORMANCE  
NOTE-4: DIMENSIONS AFTER REFLOW FOR PUR TIN AND TIN LEAD HOLE

Mark with CD78S80C6GL00 REV. J in area indicated by X.....		Material -	Mat code -	Heat treat -	Plating/Finish -	Spec ref surface <input checked="" type="checkbox"/> tolerance ISO 406 ISO 1101 ISO 1302	projection <input checked="" type="checkbox"/> size AI	Scale 1:1
Dr PESSON	Eng LEGARE	14/11/03	Product family SUB D	Chr DUMAZY	14/11/03	Model Name CD78S80C6GL00	ECN LS07-0094	REL Level CONCEPT
Appr LEGARE	14/11/03	Model Revision	B					
FCI		SUB COMPACT D FEMALE		C01-8646-0846		Rev. J		
right angled press fit 78 way		CD78S80C6GL00		CUSTOMER COPY		sheet 1 of 1		