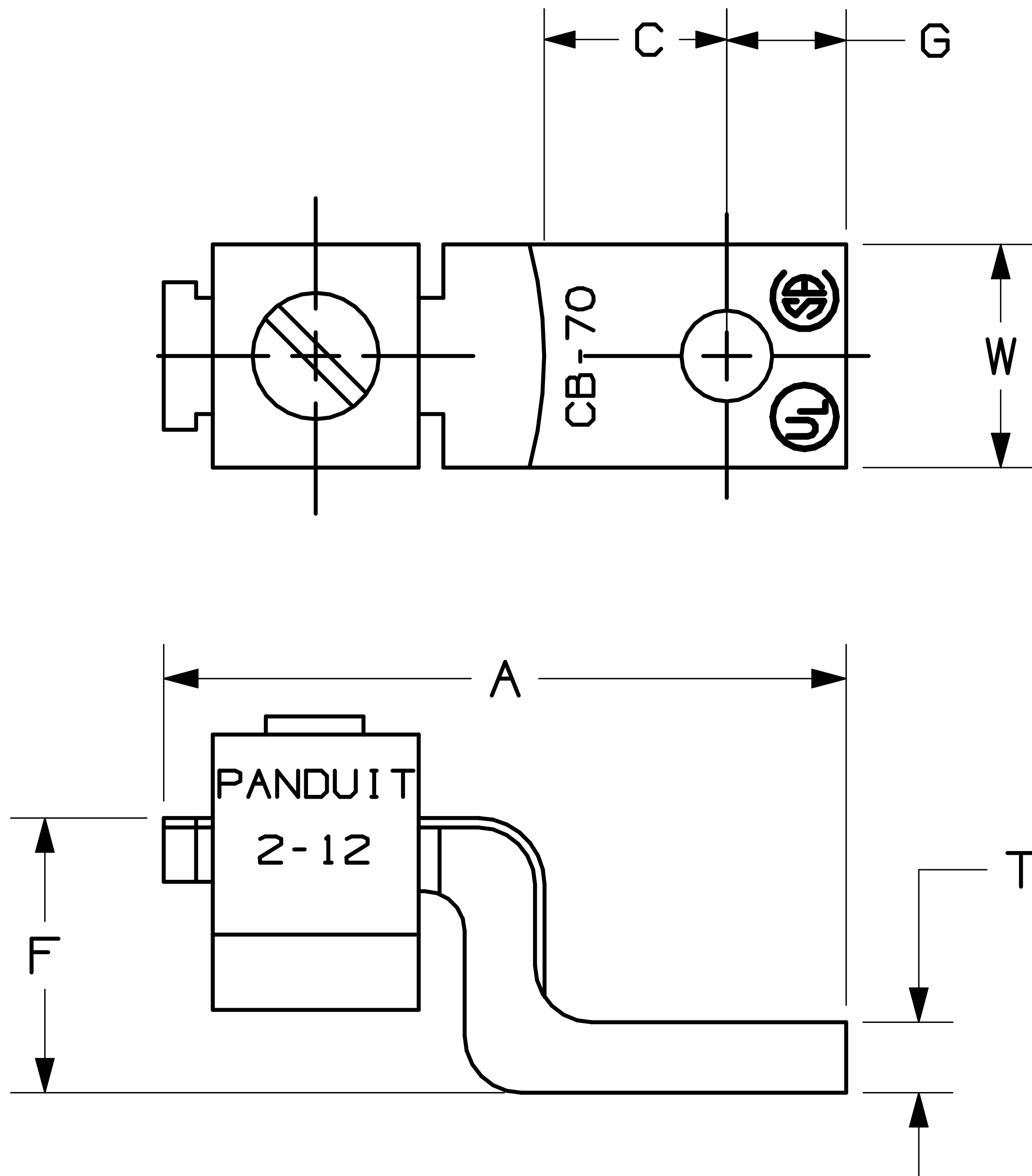


PART NUMBER	COPPER CONDUCTOR SIZE RANGE	CURRENT RATING (AMPS)	BOLT HOLE SIZE	HEX SIZE	DIMENSIONS IN INCHES					
					A	W	G	C	T	F
CB25-18-CY	#14-#10	25	1/8	---	1.00	.32	.19	.28	.07	.28
CB35-36-CY	#14-#6	50	3/16	---	1.19	.38	.23	.25	.07	.41
CBA70-14-CY	#14-#4	70	1/4	---	1.31	.50	.25	.28	.08	.40
CB70-14-CY	#12-#2	90	1/4	---	1.55	.50	.25	.34	.09	.52
CB125-14-QY	#2-#1/0	125	1/4	---	1.97	.63	.50	.28	.13	.64
CB175-38-QY	#4-#3/0	175	3/8	5/16	2.19	.75	.44	.50	.16	.75
CB225-56-QY	#6-#4/0	225	5/16	5/8	2.38	1.00	.47	.56	.13	.91
CB300-38-QY	#1-#350	300	3/8	3/4	3.16	1.00	.50	.94	.19	1.37
CB400-38-3Y	#1/0-500	400	3/8	3/4	4.25	1.50	.88	1.00	.19	1.37
CB650-12-3Y	600-1000	650	1/2	1-1/8	4.63	2.00	1.16	.87	.25	1.97



LISTED
509D



CERTIFIED
70732

NOTES:

1. UL AND CSA LOGOS APPEAR ON ALL PARTS AS SHOWN.
2. "P" PANDUIT LOGO APPEARS ON PART NO. CB25-18-C ONLY. ALL OTHER PARTS EXCLUDING CB25-18-C, STAMPED "PANDUIT".
3. FLAT HEAD SET SCREW IS USED IF HEX SIZE IS NOT GIVEN.
4. FOR USE WITH COPPER WIRE ONLY.
5. MATERIAL: COPPER
6. ADDITIONAL MULTIPLE WIRE COMBINATIONS FOR CB35-36-C ARE:
A. TWO-#10'S D. ONE-#10 WITH ONE-#12
B. TWO-#12'S E. ONE-#12 WITH ONE-#14
C. TWO-#14'S
7. ADDITIONAL MULTIPLE WIRE COMBINATIONS FOR CB70-14-Q ARE:
A. ONE-#8 WITH ONE-#4
B. ONE-#8 WITH ONE-#6
8. THESE PARTS ARE ROHS COMPLIANT.

CAD FILENAME/LAYERS

C41663_00

PANDUIT

CORP. TINLEY PARK, ILLINOIS

"CB" SERIES MECHANICAL LUGS
CUSTOMER DRAWING

UNLESS OTHERWISE SPECIFIED,
DIMENSIONAL TOLERANCES ARE:
(.X) ± (.XXX) ±
(.XX) ± ANGLES ±

UNLESS OTHERWISE SPECIFIED,
ALL DIMENSIONS ARE GIVEN
IN INCHES, THIRD ANGLE PROJECTION.

DRAWN BY
JHNU

MAT'L:

SCALE
NONE

DATE
3/06

COPPER

DRAWING NO.

C41663

DWG

A
SIZE

00 3/06 JHNU LEM DRAWING RELEASED - ROHS COMPLIANT PC00348

REV DATE BY CHK DESCRIPTION

ECN CUST PM