



300mA CMOS Dual LDO Regulator

FEATURES

- Two outputs with guaranteed 300mA peak output current
- Low dropout voltages of 210mV typical at 300mA
- Stable with ceramic output capacitors
- Independent enable pins
- Under voltage lockout
- No-load ground current of 100µA typical
- Full-load ground current of 160µA typical
- ±1.0% output voltage initial accuracy
- ±2.0% accuracy over temperature
- “Zero” current shutdown mode
- Fold-back current limit and thermal protection
- TSOT-23 6-lead, 0.8mm height package

APPLICATIONS

- Cellular phones
- Battery-powered devices
- Consumer Electronics

DESCRIPTION

The 300mA CMOS Dual LDO CAT6221 combines in a single TSOT-23 6-lead package two low dropout regulators (LDO), each with its own enable pin.

The regulator outputs drive loads up to 300mA. By design, the dual LDO provides fast response time during load current and line voltage changes.

Each LDO is optimized for low noise and high crosstalk isolation. With zero shut down current and a low quiescent current of 100µA, the dual LDO is ideal for battery-operated devices with supply voltage from 2.3V to 5.5V.

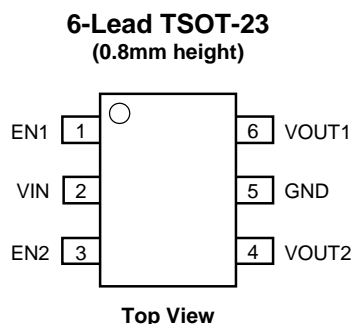
The dual LDO offers 1% initial accuracy and very low dropout voltage, typical 210mV at 300mA. Stable operation is provided with small 1µF ceramic output capacitors, reducing required board space and component cost.

Other features include fold-back current limit and thermal protection.

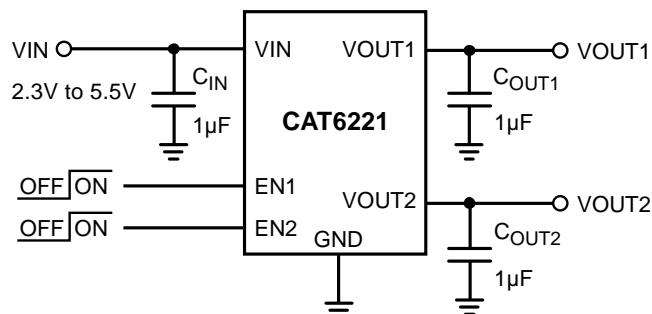
The dual LDO is available in the tiny 6-lead TSOT-23 package with a maximum height of 0.8mm.

For Ordering Information details, see page 10.

PIN CONFIGURATION



TYPICAL APPLICATION CIRCUIT



PIN DESCRIPTIONS

Pin #	Name	Function
1	EN1	Enable input (active high) for VOUT1.
2	VIN	Supply voltage input.
3	EN2	Enable input (active high) for VOUT2.
4	VOUT2	LDO Output Voltage 2.
5	GND	Ground reference.
6	VOUT1	LDO Output Voltage 1.

PIN FUNCTION

VIN is the supply pin for the LDO. A small 1 μ F ceramic bypass capacitor is required between the V_{IN} pin and ground near the device. When using longer connections to the power supply, C_{IN} value can be increased without limit. The operating input voltage range is from 2.3V to 5.5V.

EN1 & 2 are the enable control logic (active high) for the regulator outputs.

VOUT1 & 2 are the LDO regulator outputs. A small 1 μ F ceramic bypass capacitor is required between the VOUT pins and ground. For better transient response, its value can be increased to 4.7 μ F.

The capacitor should be located near the device. For the TSOT23 6-lead package, a continuous 300mA output current for both LDOs may turn-on the thermal protection.

ABSOLUTE MAXIMUM RATINGS⁽¹⁾

Parameter	Rating	Unit
V_{IN}	0 to 6.5	V
V_{EN} , V_{OUT}	-0.3 to $V_{IN}+0.3$	V
Junction Temperature, T_J	+150	°C
Power Dissipation, P_D	Internally Limited ⁽²⁾	mW
Storage Temperature Range, T_S	-65 to +150	°C
Lead Temperature (soldering, 5 sec.)	260	°C
ESD Rating (Human Body Model)	3	kV

RECOMMENDED OPERATING CONDITIONS⁽³⁾

Parameter	Range	Unit
V_{IN}	2.3 to 5.5	V
V_{EN}	0 to V_{IN}	V
Junction Temperature Range, T_J	-40 to +125	°C
Package Thermal Resistance (TSOT23), θ_{JA}	235	°C/W

Typical application circuit with external components are shown on page 1.

Notes:

- (1) Exceeding maximum rating may damage the device.
- (2) The maximum allowable power dissipation at any T_A (ambient temperature) is $P_{Dmax} = (T_{Jmax} - T_A) / \theta_{JA}$. Exceeding the maximum allowable power dissipation will result in excessive die temperature, and the regulator will go into thermal shutdown.
- (3) The device is not guaranteed to work outside its operating rating.

BLOCK DIAGRAM

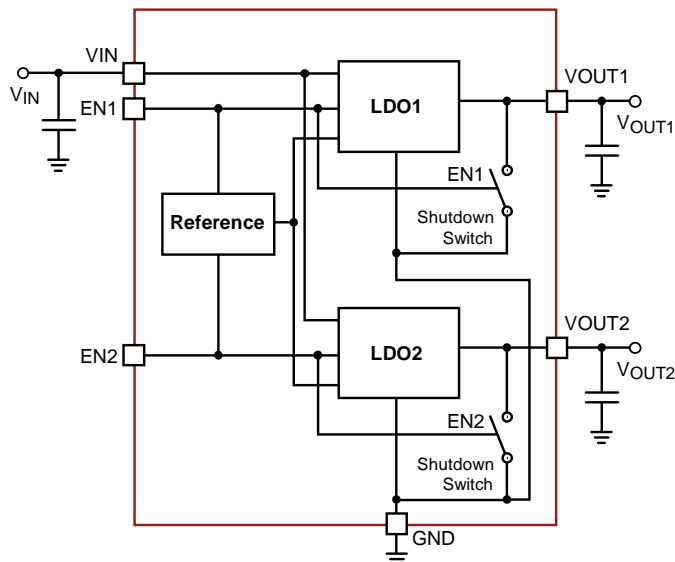


Figure 2. CAT6221 Functional Block Diagram

On each output, a 250 Ω internal shutdown switch discharges the output capacitor in the no-load condition.

GND is the ground reference for the LDO. The pin must be connected to the ground plane on the PCB.

ELECTRICAL OPERATING CHARACTERISTICS ⁽¹⁾

$V_{IN} = V_{OUT} + 1.0V$, $V_{EN} = \text{High}$, $I_{OUT} = 100\mu A$, $C_{IN} = C_{OUT} = 1\mu F$, ambient temperature of 25°C (over recommended operating conditions unless specified otherwise). **Bold numbers** apply for the entire junction temperature range.

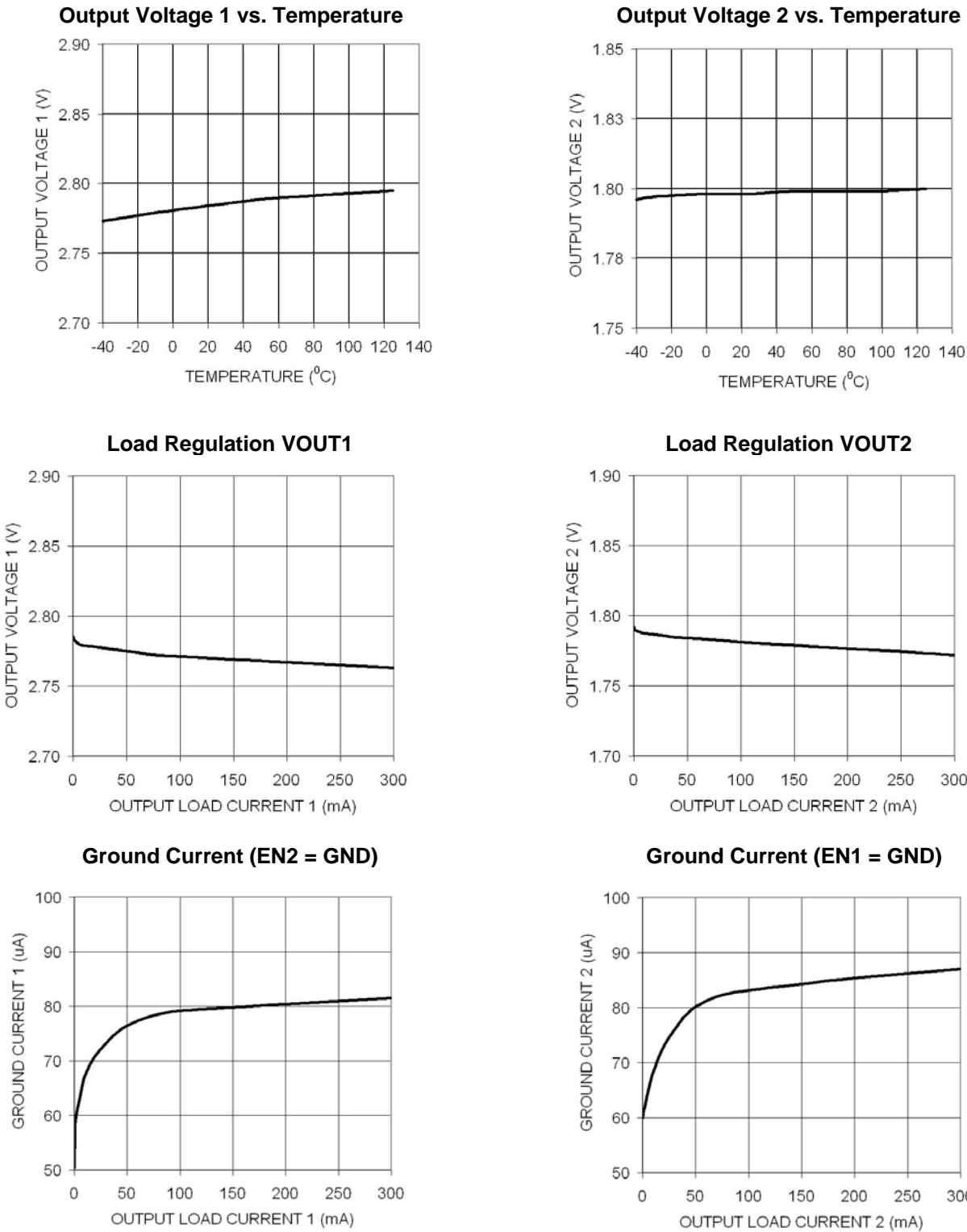
Symbol	Parameter	Conditions	Min	Typ	Max	Unit
V _{OUT-ACC}	Output Voltage Accuracy	Initial accuracy	-1.0		+1.0	%
			-2.0		+2.0	
TC _{OUT}	Output Voltage Temp. Coefficient			40		ppm/°C
V _{R-LINE}	Line Regulation	V _{IN} = V _{OUT} + 1.0V to 5.5V	-0.2	±0.1	+0.2	%/V
			-0.4		+0.4	
V _{R-LOAD}	Load Regulation	I _{OUT} = 100µA to 300 mA		0.9	1.5	%
					2	
V _{DROP}	Dropout Voltage ⁽²⁾	I _{OUT} = 300mA		210	280	mV
					350	
I _{GND}	Ground Current	Both LDOs Enabled I _{OUT} = 0µA		100	140	µA
					170	
		Both LDOs Enabled I _{OUT} = 300mA		160		
		One LDO Enabled I _{OUT} = 0µA		55	75	
		One LDO Enabled I _{OUT} = 300mA			85	
I _{GND-SD}	Shutdown Ground Current	V _{EN} < 0.4V			2	µA
					4	
PSRR	Power Supply Rejection Ratio	f = 1kHz		60		dB
		f = 20kHz		45		
I _{SC}	Output short circuit current limit	V _{OUT} = 0V		130		mA
T _{ON}	Turn-On Time			150		µs
e _N	Output Noise Voltage ⁽³⁾	BW = 10Hz to 100kHz		95		µVrms
R _{OUT-SH}	Shutdown Switch Resistance			250		Ω
V _{IN-UVLO}	Under voltage lockout threshold			2.15		V
ESR	C _{OUT} equivalent series resistance		5		500	mΩ
Enable Input (EN1, EN2)						
V _{HI}	Logic High Level	V _{IN} = 2.3 to 5.5V	1.8			V
V _{LO}	Logic Low Level	V _{IN} = 2.3 to 5.5V			0.4	V
I _{EN}	Enable Input Current	V _{EN} = 0.4V		0.05	1	µA
		V _{EN} = V _{IN}		0.1	1	
Thermal Protection						
T _{SD}	Thermal Shutdown			160		°C
T _{HYS}	Thermal Hysteresis			10		°C

Notes:

- (1) Specification for 2.8V output version unless specified otherwise.
 (2) Dropout voltage is defined as the input-to-output differential at which the output voltage drops 2% below its nominal value measured at 1V differential. During test, the input voltage stays always above the minimum 2.3V.
 (3) Specification for 1.8V output version.

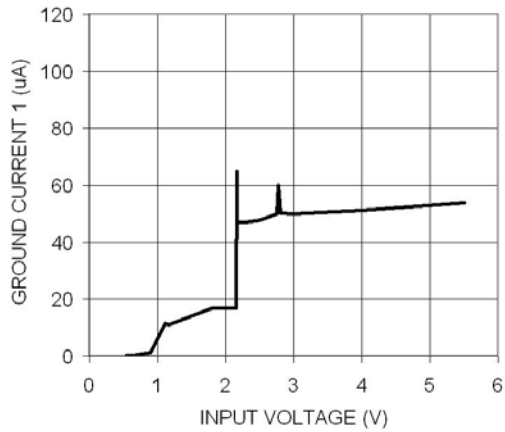
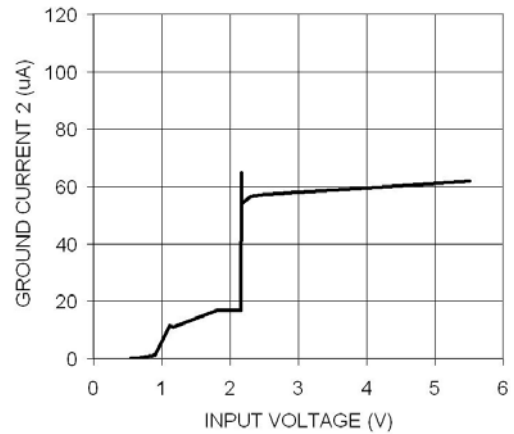
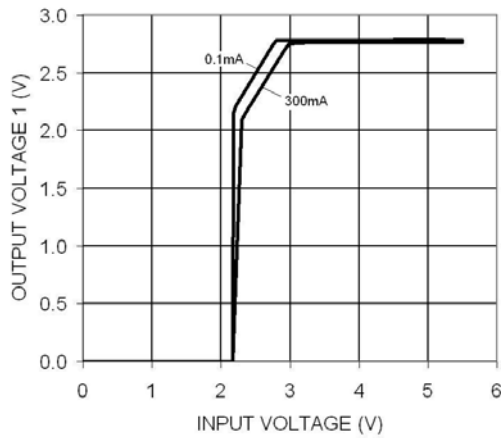
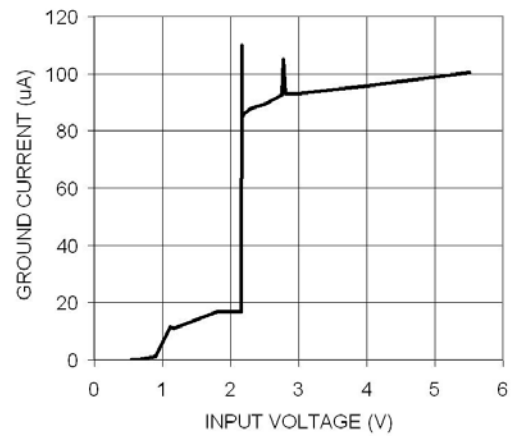
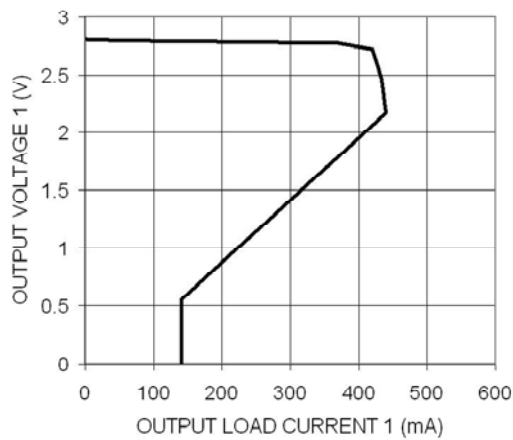
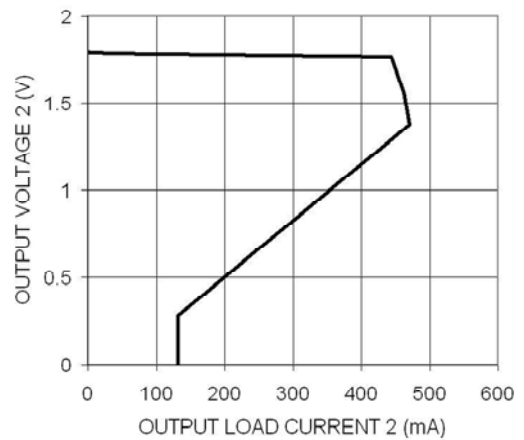
TYPICAL CHARACTERISTICS (shown for 2.8V/1.8V outputs version)

$V_{IN} = 3.8V$, $I_{OUT} = 100\mu A$, $EN1 = EN2 = V_{IN}$, $C_{IN} = C_{OUT} = 1\mu F$, $T_A = 25^{\circ}C$ unless otherwise specified.



TYPICAL CHARACTERISTICS (shown for 2.8V/1.8V outputs option)

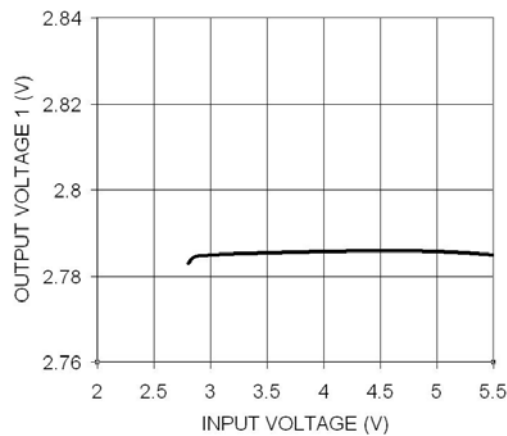
$V_{IN} = 3.8V$, $I_{OUT} = 100\mu A$, $EN1 = EN2 = V_{IN}$, $C_{IN} = C_{OUT} = 1\mu F$, $T_A = 25^\circ C$ unless otherwise specified.

Ground Current (EN2 = GND)**Ground Current (EN1 = GND)****Output 1 Dropout Characteristics****Ground Current vs. Input Voltage****Output Voltage 1 vs. Load Current 1****Output Voltage 2 vs. Load Current 2**

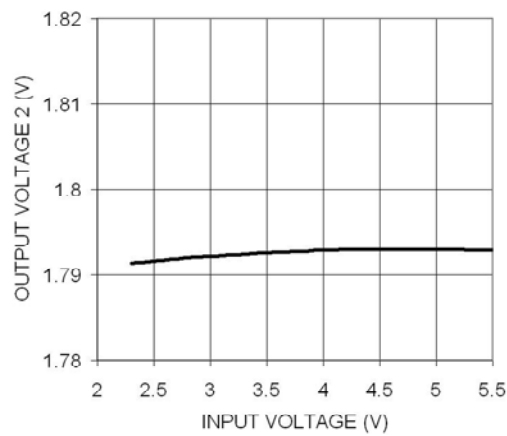
TYPICAL CHARACTERISTICS (shown for 2.8V/1.8V outputs option)

$V_{IN} = 3.8V$, $I_{OUT} = 100\mu A$, $EN1 = EN2 = V_{IN}$, $C_{IN} = C_{OUT} = 1\mu F$, $T_A = 25^{\circ}C$ unless otherwise specified.

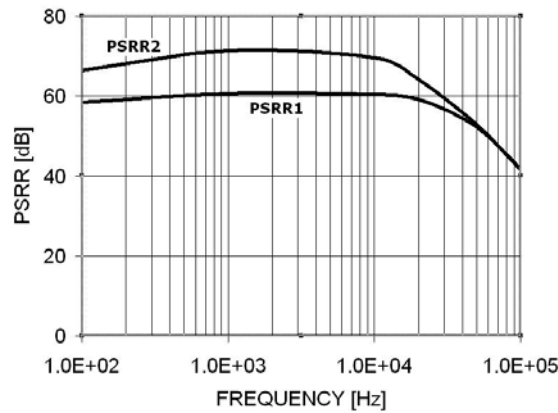
Line Regulation VOUT1



Line Regulation VOUT2



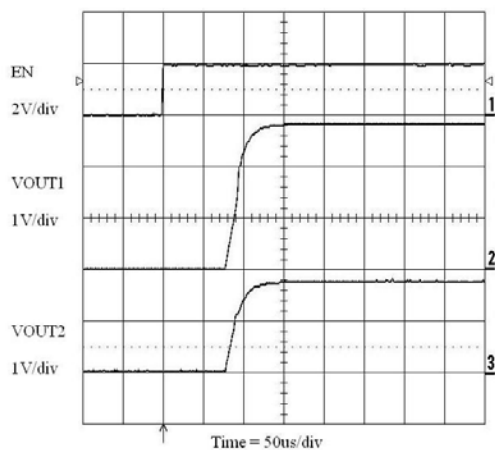
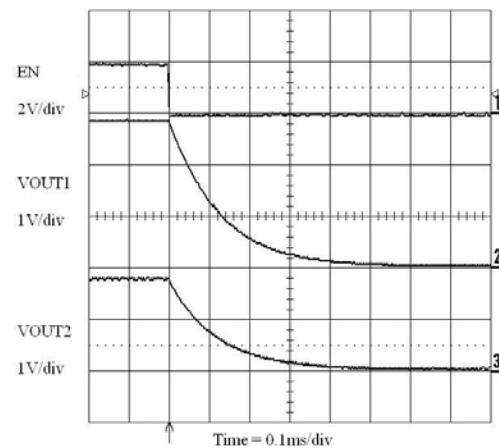
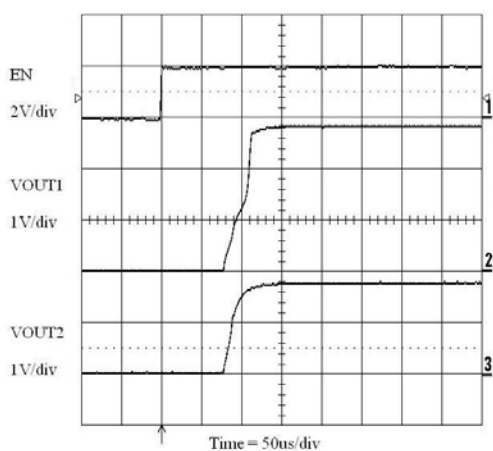
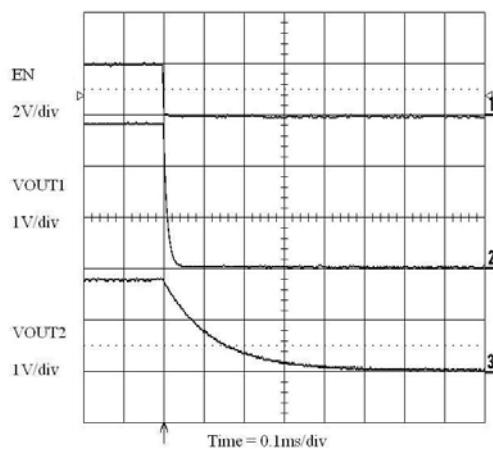
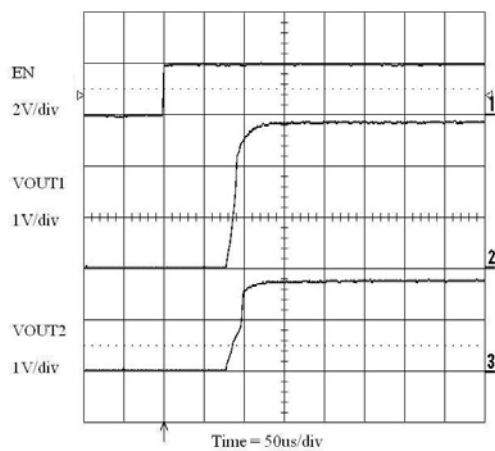
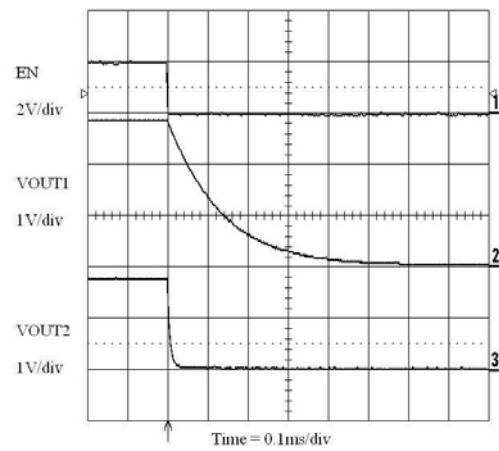
PSRR 1 & 2 vs. Frequency (30mA Load)



TRANSIENT CHARACTERISTICS (shown for 2.8V/1.8V outputs option)

$V_{IN} = 3.8V$, $I_{OUT} = 100\mu A$, $EN1 = EN2 = V_{IN}$, $C_{IN} = C_{OUT} = 1\mu F$, $T_A = 25^\circ C$ unless otherwise specified.

Note: All transient characteristics are generated using the evaluation board CAT6221EVAL1.

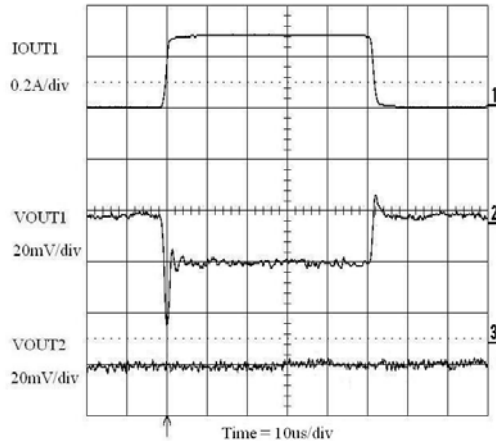
Enable Turn-On (100 μA Loads)**Enable Turn-Off (100 μA Loads)****Enable Turn-On (300mA/100 μA Loads)****Enable Turn-Off (300mA/100 μA Loads)****Enable Turn-On (100 μA /300mA Loads)****Enable Turn-Off (100 μA /300mA Loads)**

TRANSIENT CHARACTERISTICS (shown for 2.8V/1.8V outputs option)

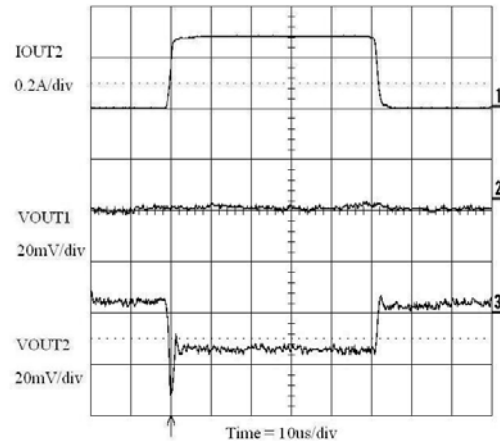
$V_{IN} = 3.8V$, $I_{OUT} = 100\mu A$, $EN1 = EN2 = V_{IN}$, $C_{IN} = C_{OUT} = 1\mu F$, $T_A = 25^\circ C$ unless otherwise specified.

Note: All transient characteristics are generated using the evaluation board CAT6221EVAL1.

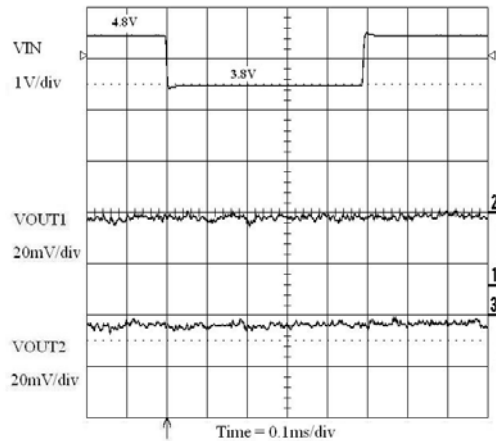
VOUT1 Load Transient Response (0.1 to 300mA)



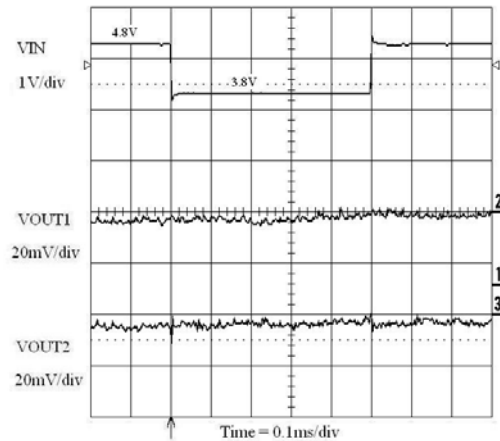
VOUT2 Load Transient Response (0.1 to 300mA)



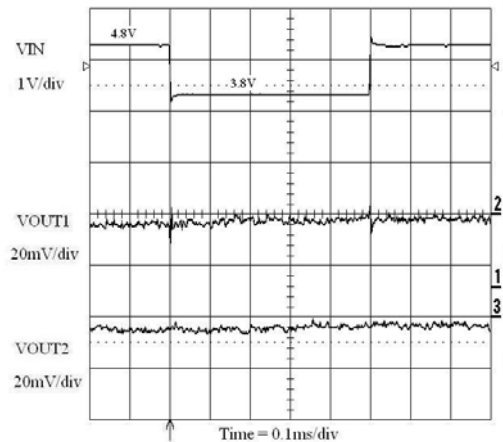
Line Transient Response (0.1mA Loads)



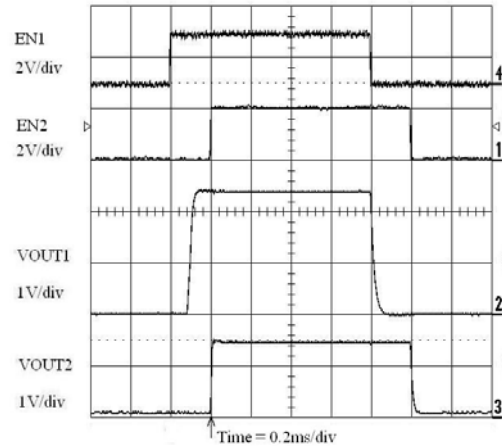
Line Transient Response (0.1/100mA Loads)



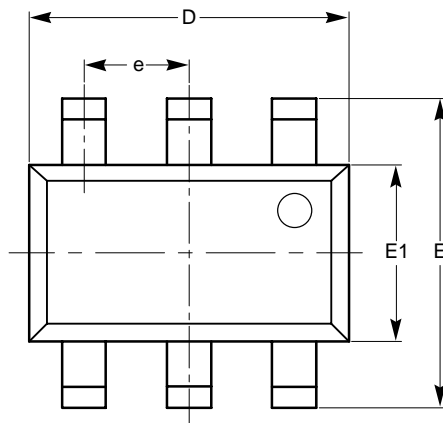
Line Transient Response (100/0.1mA Loads)



Separate Enable Operation (100mA Loads)

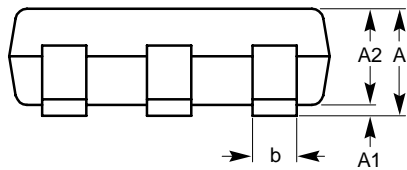


PACKAGE OUTLINE DRAWING

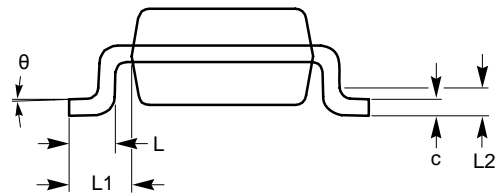
TSOT-23 6-Lead 0.8mm (TD)⁽¹⁾⁽²⁾

TOP VIEW

SYMBOL	MIN	NOM	MAX
A			1.00
A1	0.01	0.05	0.10
A2	0.80	0.87	0.90
b	0.30		0.45
c	0.12	0.15	0.20
D	2.90 BSC		
E	2.80 BSC		
E1	1.60 BSC		
e	0.95 TYP		
L	0.30	0.40	0.50
L1	0.60 REF		
L2	0.25 BSC		
θ	0°		8°



SIDE VIEW



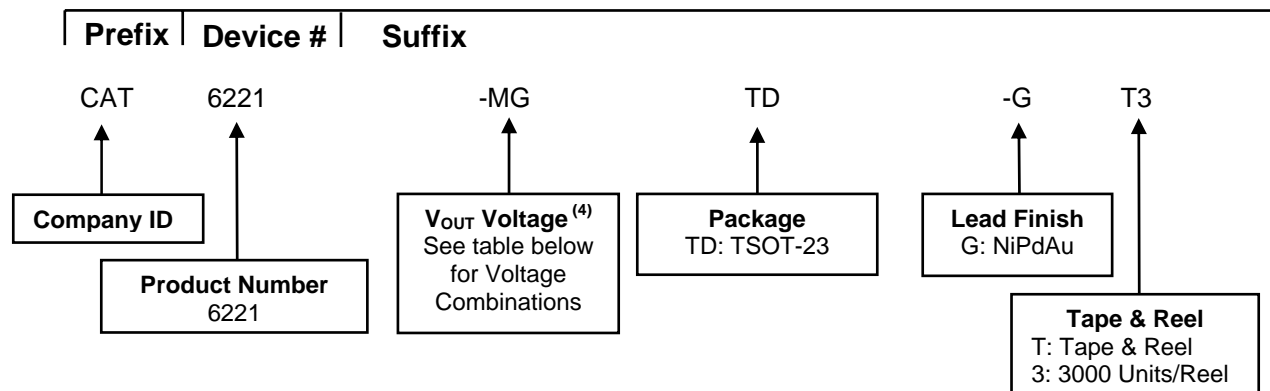
END VIEW

For current Tape and Reel information, download the PDF file from:
<http://www.catsemi.com/documents/tapeandreeel.pdf>.

Notes:

- (1) All dimensions are in millimeters, angles in degrees.
- (2) Complies with JEDEC standard MO-193.

EXAMPLE OF ORDERING INFORMATION




Part Number	V _{OUT} Voltage Combination ⁽⁴⁾	Package	Quantity per Reel
CAT6221-JFTD-G	2.5V / 1.5V	TSOT-23	3000
CAT6221-JGTD-G	2.5V / 1.8V	TSOT-23	3000
CAT6221-JLTD-G	2.5V / 2.7V	TSOT-23	3000
CAT6221-JPTD-G	2.5V / 3.0V	TSOT-23	3000
CAT6221-MFTD-G	2.8V / 1.5V	TSOT-23	3000
CAT6221-MGTD-G	2.8V / 1.8V	TSOT-23	3000
CAT6221-MLTD-G	2.8V / 2.7V	TSOT-23	3000
CAT6221-MPTD-G	2.8V / 3.0V	TSOT-23	3000
CAT6221-PFTD-G	3.0V / 1.5V	TSOT-23	3000
CAT6221-PGTD-G	3.0V / 1.8V	TSOT-23	3000
CAT6221-PLTD-G	3.0V / 2.7V	TSOT-23	3000
CAT6221-PPTD-G	3.0V / 3.0V	TSOT-23	3000
CAT6221-SFTD-G	3.3V / 1.5V	TSOT-23	3000
CAT6221-SGTD-G	3.3V / 1.8V	TSOT-23	3000
CAT6221-SLTD-G	3.3V / 2.7V	TSOT-23	3000
CAT6221-SPTD-G	3.3V / 3.0V	TSOT-23	3000

Notes:

- (1) All packages are RoHS-compliant (Lead-free, Halogen-free).
- (2) The standard lead finish is NiPdAu pre-plated (PPF) lead frames.
- (3) The device used in the above example is a CAT6221-MGTD-GT3 (V_{OUT1} = 2.8V, V_{OUT2} = 1.8V, in a TSOT-23 package, NiPdAu, Tape and Reel).
- (4) For other voltage combinations, please contact your nearest ON Semiconductor Sales office.
- (5) Top marking for CAT6221 is T3YM (Y = Year, M = Month).

REVISION HISTORY

Date	Rev.	Description
10-Oct-07	A	Initial Release
19-Nov-08	B	Change logo and fine print to ON Semiconductor

ON Semiconductor and  are registered trademarks of Semiconductor Components Industries, LLC (SCILLC). SCILLC reserves the right to make changes without further notice to any products herein. SCILLC makes no warranty, representation or guarantee regarding the suitability of its products for any particular purpose, nor does SCILLC assume any liability arising out of the application or use of any product or circuit, and specifically disclaims any and all liability, including without limitation special, consequential or incidental damages. "Typical" parameters which may be provided in SCILLC data sheets and/or specifications can and do vary in different applications and actual performance may vary over time. All operating parameters, including "Typicals" must be validated for each customer application by customer's technical experts. SCILLC does not convey any license under its patent rights nor the rights of others. SCILLC products are not designed, intended, or authorized for use as components in systems intended for surgical implant into the body, or other applications intended to support or sustain life, or for any other application in which the failure of the SCILLC product could create a situation where personal injury or death may occur. Should Buyer purchase or use SCILLC products for any such unintended or unauthorized application, Buyer shall indemnify and hold SCILLC and its officers, employees, subsidiaries, affiliates, and distributors harmless against all claims, costs, damages, and expenses, and reasonable attorney fees arising out of, directly or indirectly, any claim of personal injury or death associated with such unintended or unauthorized use, even if such claim alleges that SCILLC was negligent regarding the design or manufacture of the part. SCILLC is an Equal Opportunity/Affirmative Action Employer. This literature is subject to all applicable copyright laws and is not for resale in any manner.

PUBLICATION ORDERING INFORMATION

LITERATURE FULFILLMENT:

Literature Distribution Center for ON Semiconductor
P.O. Box 5163, Denver, Colorado 80217 USA
Phone: 303-675-2175 or 800-344-3860 Toll Free USA/Canada
Fax: 303-675-2176 or 800-344-3867 Toll Free USA/Canada
Email: orderlit@onsemi.com

N. American Technical Support: 800-282-9855 Toll Free
USA/Canada
Europe, Middle East and Africa Technical Support:
Phone: 421 33 790 2910
Japan Customer Focus Center:
Phone: 81-3-5773-3850

ON Semiconductor Website: www.onsemi.com

Order Literature: <http://www.onsemi.com/orderlit>

For additional information, please contact your local Sales Representative