

SPECIFICATIONS

Material: E-SEELS — Silicone rubber polymer type ASTM D 1418

Mounting Nut: E-SEELS: Brass, black-oxide

Temperature Range: E-SEELS: -80°F to +400°F

Pressure Range: Exceeds 15 psi internal and 1500 psi external.
(N5032B: 10 psi)

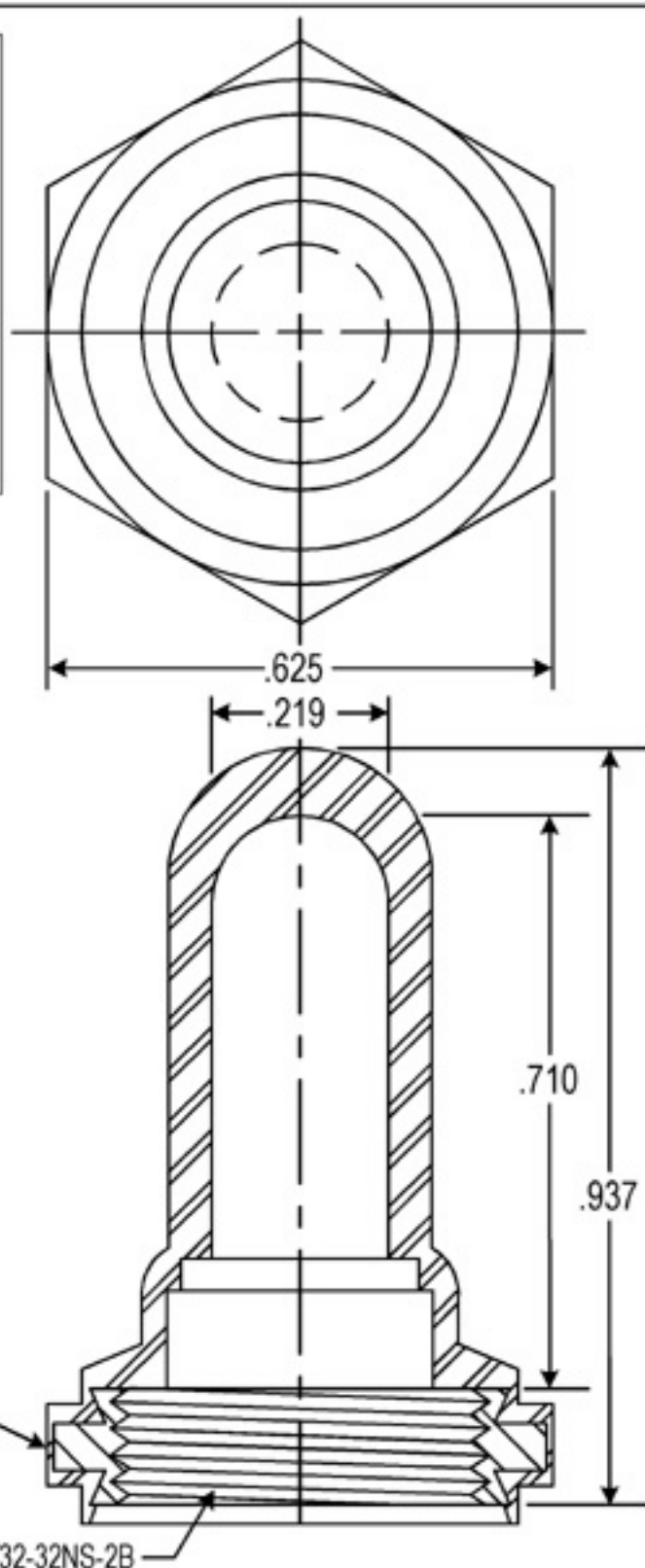
Operational Life: 50,000 actuations (minimum).

Shelf Life: Excess of 25 years.

Resistant to: Salt spray, sunlight, ozone, weather, fungus, and most acids and lubricating oils

Agency Recognition: E-SEELS and HEXSEALS are UL-listed to UL Std. 50 types 1-13, and meet CSA standards.

Installation: If a reducing adaptor is required — see page 14 of HEXSEAL catalog HEX200 for part numbers and drawing.



C	CAD COMPUTER GENERATED	9-23-02
B	REDRAWN	9-12-74
REV.	DESCRIPTION	DATE
	BOOT, TOGGLE SWITCH # (C1131/28)	12-7-57
	ENG. M.M.	12-7-57
	DWN. J.PALUMBO	12-7-57
	CHKD.	
	SCALE 4:1	DWG. NO. (C1131/28)
	APM-HEXSEAL CORPORATION	E-SEEL®
	BLACK	

THIS DRAWING COVERS PROPRIETARY ITEM AND IS THE PROPERTY OF THE APM-HEXSEAL CORPORATION.
THIS DRAWING IS NOT TO BE COPIED OR USED WITHOUT THE WRITTEN APPROVAL OF AN OFFICER OF THE APM-HEXSEAL CORPORATION.