

8-bit serial in, parallel out driver IC

BU2050F

The BU2050F is a driver IC that is comprised of an 8-bit shift register and a latch (serial in / parallel out). The data read into the shift register can be asynchronously latched. The CMOS outputs can provide 25mA (Max.) of current per output, making this IC ideal for a wide range of applications including driving LEDs.

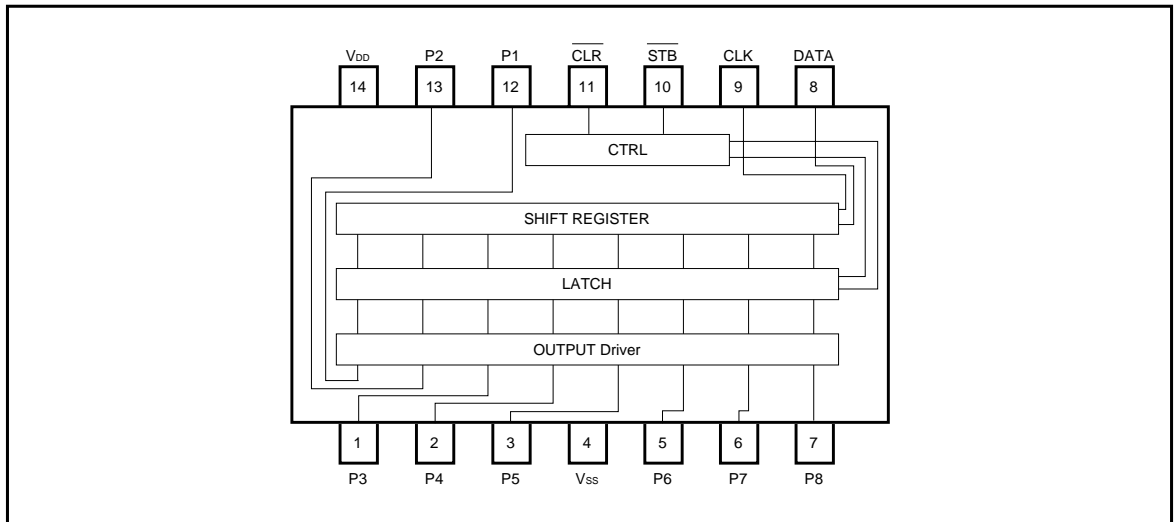
●Applications

Printers, mini-component stereo systems, car audio systems, and musical instruments

●Features

- 1) Regardless of the clock and data input, the $\overline{\text{CLR}}$ pin resets the latch circuit, and sets all outputs to the low level.
- 2) Output drive capacity: 25mA / output (Max.).
- 3) Input pin hysteresis: 0.5V (Typ.).

●Block diagram



●Pin descriptions

Pin No.	Pin name	Function
1	P3	Parallel data output
2	P4	Parallel data output
3	P5	Parallel data output
4	V _{SS}	GND
5	P6	Parallel data output
6	P7	Parallel data output
7	P8	Parallel data output
8	DATA	Serial data input
9	CLK	Clock signal input
10	$\overline{\text{STB}}$	Strobe signal input When STB is low, the contents of the shift register are output. When STB is high, the contents of the latch circuit and output do not change.
11	$\overline{\text{CLR}}$	Reset signal input When CLR is low, the latch circuit is reset, and all outputs (P1 to P8) are set to low. Normally, CLR is high.
12	P1	Parallel data output
13	P2	Parallel data output
14	V _{DD}	Power supply voltage

●Absolute maximum ratings (Ta = 25°C)

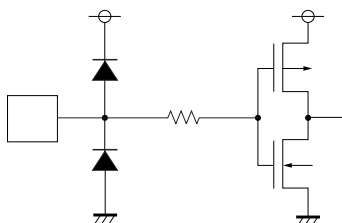
Parameter	Symbol	Limits	Unit
Power supply voltage	V _{DD}	- 0.3 ~ + 7.0	V
Input voltage	I _{SINK}	V _{SS} - 0.3 ~ V _{DD} + 0.5	mA
output voltage	V _O	V _{SS} - 0.3 ~ V _{DD} + 0.5	V
Power dissipation*1	P _d	450	mW
Operating temperature	T _{opr}	- 25 ~ + 85	°C
Storage temperature	T _{stg}	- 55 ~ + 125	°C

Note: These voltage value ranges are the destruction limits for the IC. They are not the guaranteed operating ranges for the IC.

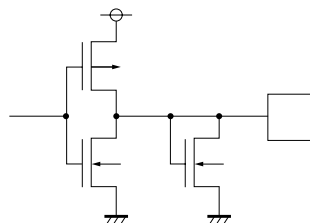
*1 Reduced by 4.5mW for each increase in Ta of 1°C over 25°C.

●Input / output circuits

(1) DATA, CLK, $\overline{\text{STB}}$, $\overline{\text{CLR}}$



(2) P1 ~ P8



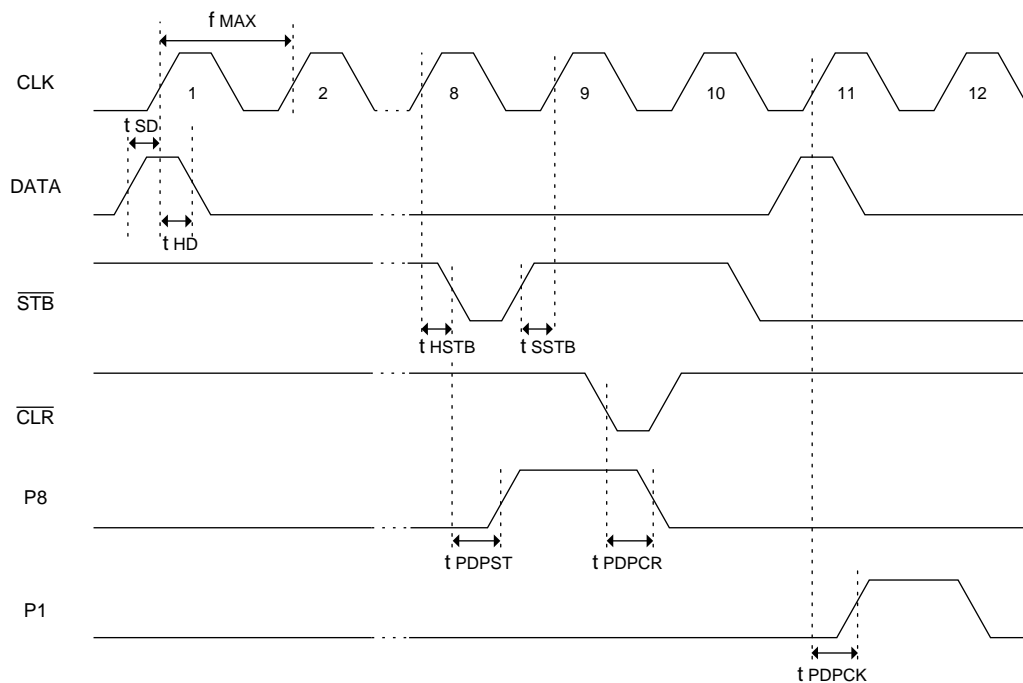
●Electrical characteristics (unless otherwise noted, $V_{DD} = 4.5V \sim 5.5V$, $T_a = 25^\circ C$)

Parameter	Symbol	Min.	Typ.	Max.	Unit	Conditions
Power supply current	I_{DD}	—	—	0.1	mA	$V_{IH} = V_{DD}$, $V_{IL} = V_{SS}$
Input high level voltage	V_{IH}	$0.7V_{DD}$	—	V_{DD}	V	—
Input low level voltage	V_{IL}	V_{SS}	—	$0.3V_{DD}$	V	—
Input leak current	I_{LI}	- 10	—	10	μA	$V_I = 0 \sim V_{DD}$
Output high level voltage	V_{OHD}	$V_{DD} - 1.5$	—	V_{DD}	V	$I_{OH} = - 25mA$
		$V_{DD} - 1.0$	—	V_{DD}	V	$I_{OH} = - 15mA$
		$V_{DD} - 0.5$	—	V_{DD}	V	$I_{OH} = - 10mA$
Output low level voltage	V_{OLD}	V_{SS}	—	1.5	V	$I_{OL} = + 25mA$
		V_{SS}	—	0.8	V	$I_{OL} = + 15mA$
		V_{SS}	—	0.4	V	$I_{OL} = + 10mA$

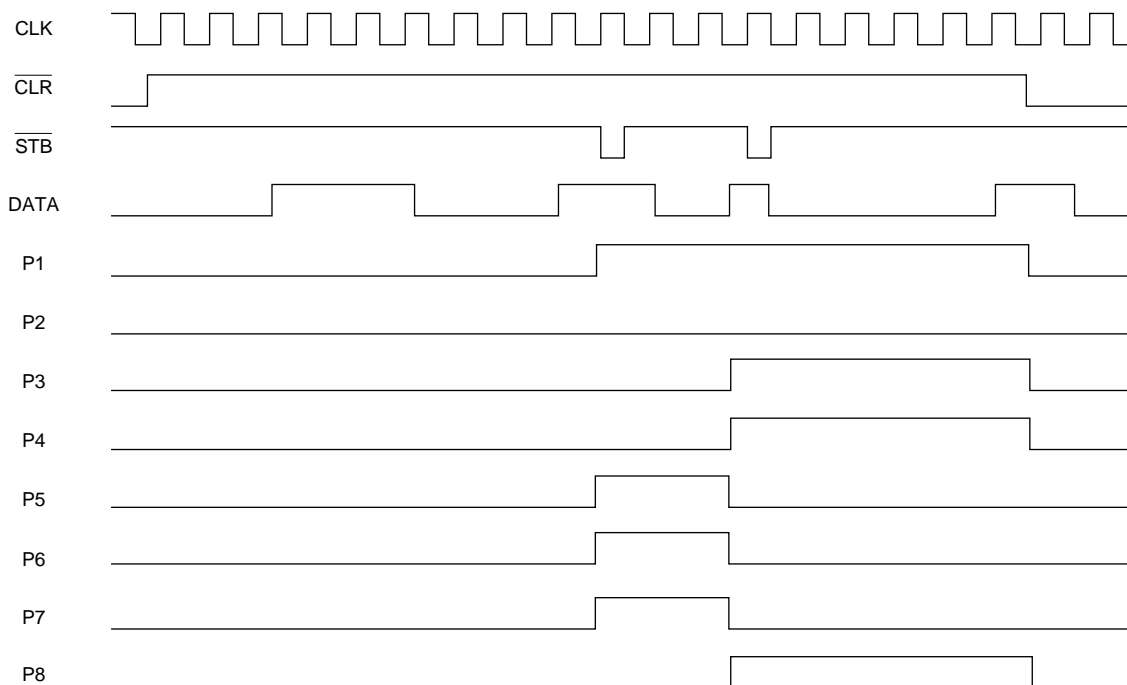
●Switching characteristics (unless otherwise noted, $V_{DD} = 4.5V \sim 5.5V$, $T_a = 25^\circ C$)

Parameter	Symbol	Min.	Typ.	Max.	Unit	Conditions
Setup time (DATA-CLK)	t_{SD}	20	—	—	ns	—
Hold time (DATA-CLK)	t_{HD}	20	—	—	ns	—
Setup time (STB-CLK)	t_{SSTB}	30	—	—	ns	—
Hold time (STB-CLK)	t_{HSTB}	30	—	—	ns	—
Transmission delay time (CLK-P1 ~ P8)	t_{PDCK}	—	—	100	ns	—
Transmission delay time (STB-P1 ~ P8)	t_{PDPSTB}	—	—	80	ns	—
Transmission delay time (CLR-P1 ~ P8)	t_{PDPCLR}	—	—	80	ns	—
Max. operating frequency	f_{MAX}	5	—	—	MHz	—

● Switching characteristics



●Timing chart



●Circuit operation

This IC is made up of an 8-bit shift register, a latch, and an output driver.

The four input pins (data (DATA), strobe ($\overline{\text{STB}}$), latch reset ($\overline{\text{CLR}}$), and clock (CLK)) are all hysteresis inputs (0.5V Typ.).

The reset function applies to all bits in the latch circuit. When $\overline{\text{CLR}}$ is low, the latch circuit is reset asynchronously, regardless of the other inputs, and all outputs are set to low. The $\overline{\text{CLR}}$ pin is normally high.

The serial data input to the data pin is synchronously read into the shift register on the rising edge of the clock.

When $\overline{\text{STB}}$ is low ($\overline{\text{CLR}}$ is high), the data in the shift register is transferred to the latch circuit, and output on the parallel data output pins (P1 ~ P8).

When $\overline{\text{STB}}$ is high, the latch circuit and output data does not change.

●Electrical characteristic curves

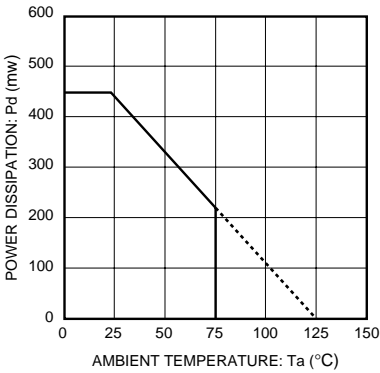


Fig. 1 Thermal derating characteristics

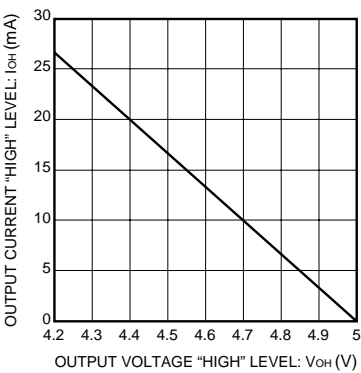


Fig. 2 Output high level current vs. output high level voltage

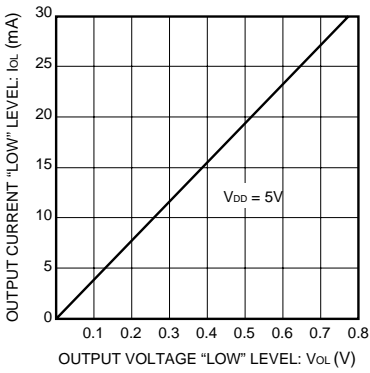
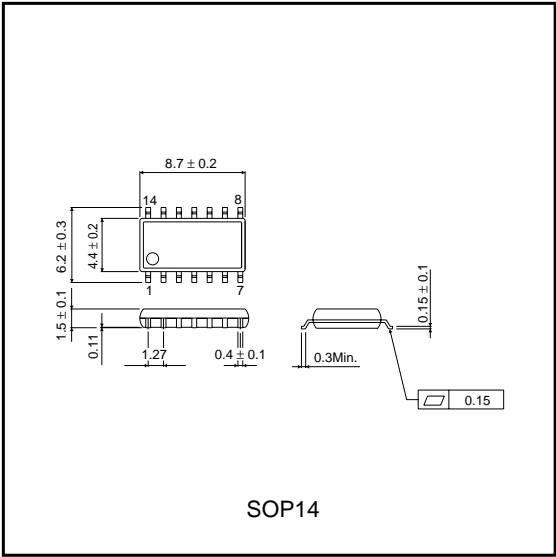


Fig. 3 Output low level current vs. output low level voltage

●External dimensions (Units: mm)



Notes

- No technical content pages of this document may be reproduced in any form or transmitted by any means without prior permission of ROHM CO.,LTD.
- The contents described herein are subject to change without notice. The specifications for the product described in this document are for reference only. Upon actual use, therefore, please request that specifications to be separately delivered.
- Application circuit diagrams and circuit constants contained herein are shown as examples of standard use and operation. Please pay careful attention to the peripheral conditions when designing circuits and deciding upon circuit constants in the set.
- Any data, including, but not limited to application circuit diagrams information, described herein are intended only as illustrations of such devices and not as the specifications for such devices. ROHM CO.,LTD. disclaims any warranty that any use of such devices shall be free from infringement of any third party's intellectual property rights or other proprietary rights, and further, assumes no liability of whatsoever nature in the event of any such infringement, or arising from or connected with or related to the use of such devices.
- Upon the sale of any such devices, other than for buyer's right to use such devices itself, resell or otherwise dispose of the same, no express or implied right or license to practice or commercially exploit any intellectual property rights or other proprietary rights owned or controlled by
- ROHM CO., LTD. is granted to any such buyer.
- Products listed in this document use silicon as a basic material.
Products listed in this document are no antiradiation design.

The products listed in this document are designed to be used with ordinary electronic equipment or devices (such as audio visual equipment, office-automation equipment, communications devices, electrical appliances and electronic toys).

Should you intend to use these products with equipment or devices which require an extremely high level of reliability and the malfunction of which would directly endanger human life (such as medical instruments, transportation equipment, aerospace machinery, nuclear-reactor controllers, fuel controllers and other safety devices), please be sure to consult with our sales representative in advance.

About Export Control Order in Japan

Products described herein are the objects of controlled goods in Annex 1 (Item 16) of Export Trade Control Order in Japan.

In case of export from Japan, please confirm if it applies to "objective" criteria or an "informed" (by MITI clause) on the basis of "catch all controls for Non-Proliferation of Weapons of Mass Destruction.