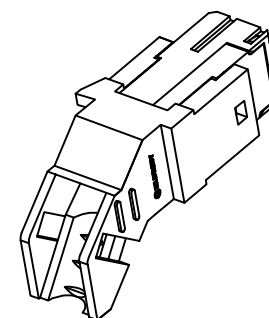
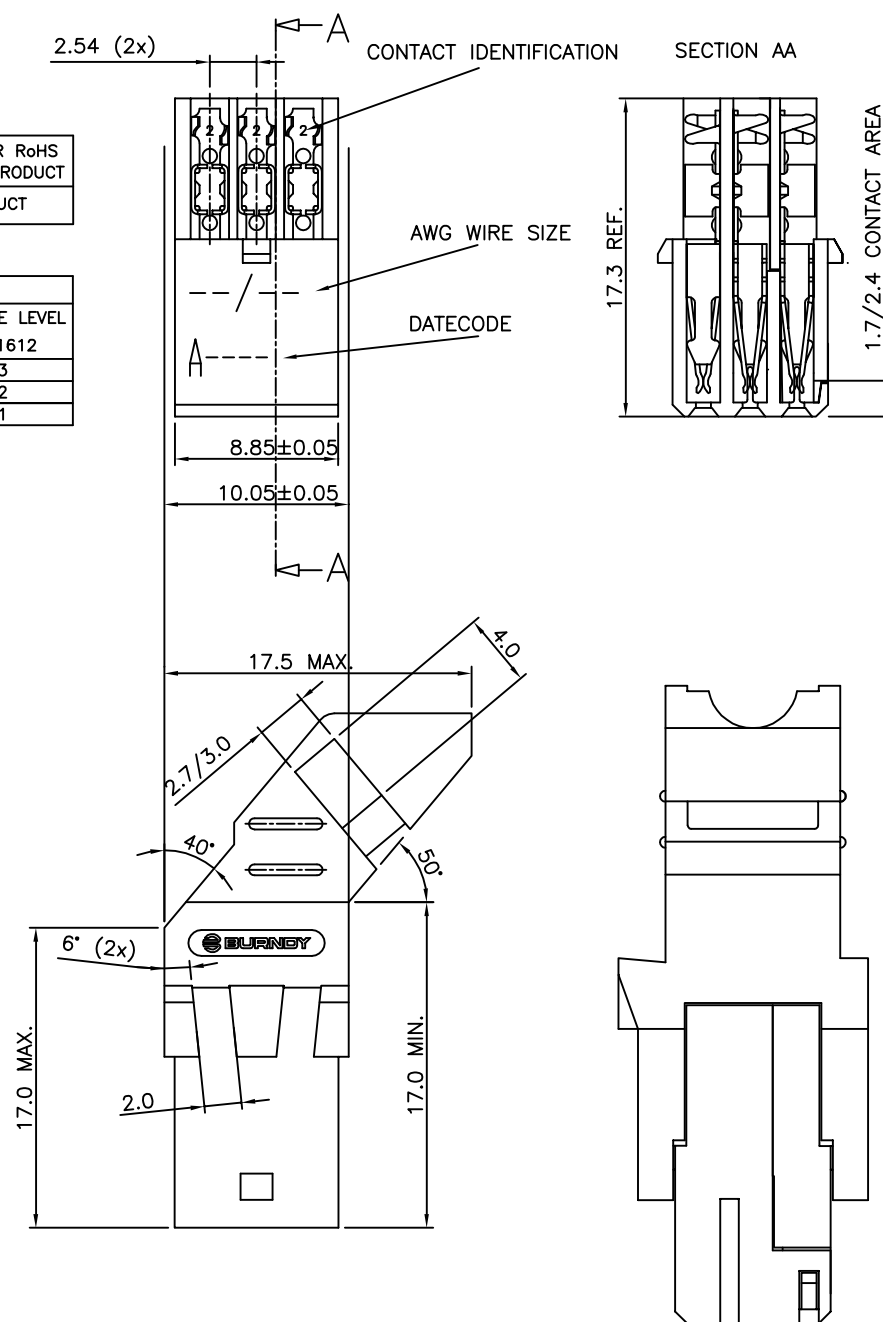
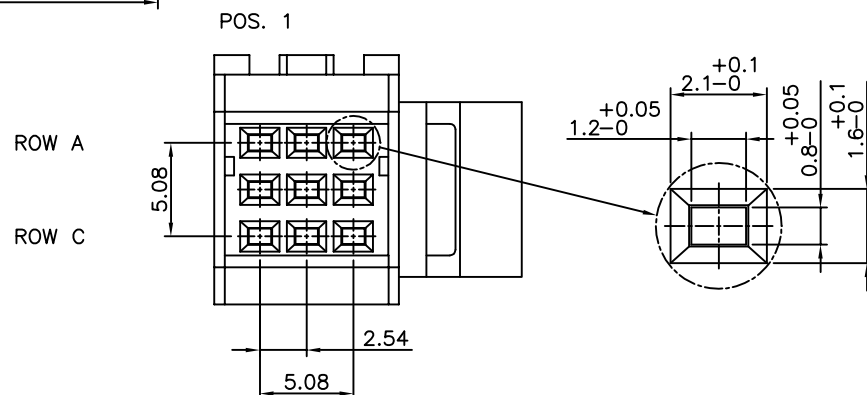
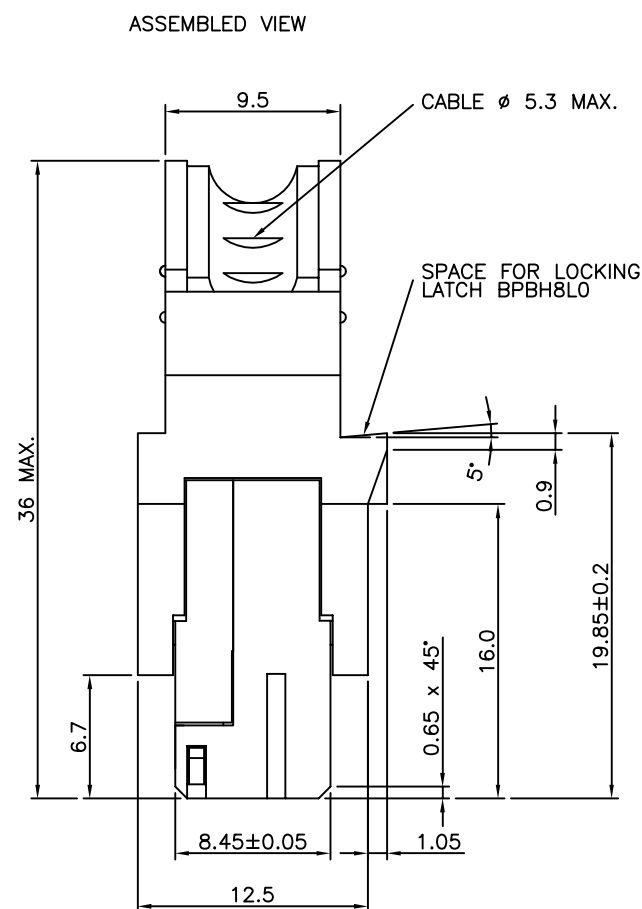


WIRE ACCOMODATION		
PRODUCT NUMBER	WIRE SIZE	CONTACT IDENTIFICATION
BPSB09FLD0C0--	AWG28/30	0
BPSB09FLD2C0--	AWG24/26	2

CONTACT PLATING	
PLATING CODE	PERFORMANCE LEVEL PER DIN41612
Z0	CLASS 3
Z1	CLASS 2
E9	CLASS 1

WITH "LF" SUFFIX	LEAD FREE OR RoHS COMPATIBLE PRODUCT
WITHOUT SUFFIX	LEADED PRODUCT



NOTES:-

1. THE "LF" PRODUCTS MEET EUROPEAN UNION DIRECTIVES AND OTHER COUNTRY REGULATIONS AS DESCRIBED IN GS-22-008
2. LEAD FREE OR ROHS DIRECTIVE LABELING TO BE PROVIDED AS PER GS-14-920 FOR ROHS COMPATIBLE VERSION.

PERFORMANCES CHARACTERISTICS

VOLTAGE RATING : 250 VAC (rms)

CURRENT RATING : 1,5 A AT 25 °C, 1 A AT 70 °C.

INSULATION RESISTANCE : 1000 MΩ INITIAL, 100 MΩ MIN. AFTER TEST

DIELECTRIC WITH—

STANDING VOLTAGE : 1000 VAC (rms).

CONTACT RESISTANCE : 15 mΩ MAX. INITIAL, 5 mΩ MAX. RISE
OF INITIAL VALUE AFTER TEST.

OPERATING TEMPERATURE*: -40 °C TO +125 °C.

INSERTION FORCE : 1 N MAX./CONTACT.

WITHDRAWAL FORCE : 0,2 N MIN./CONTACT.

*DEPENDING ON THE CABLE, THE MAX. TEMPERATURE CAN BE LOWER.

FOR STANDARD PVC INSULATED CABLE : 105 °C MAX.

CONSTRUCTION

BODY MATERIAL : GLASS--REINFORCED THERMOPLASTIC (UL94V-0).
COVER MATERIAL : POLYESTER (PBTP), COLOUR : BLACK.
CONTACT MATERIAL : PHOSPHOR BRONZE.
CONTACT FINISH : Au OVER Ni IN CONTACT AREA
SnPb on I.D.C. TERMINAL FOR LEADED PRODUCTS.
Sn (MATTE TIN) ON I.D.C TERMINAL FOR LEAD FREE PRODUCTS.
Z0 : PERFORMANCE LEVEL PER DIN41612 CLASS 3
Z1 : PERFORMANCE LEVEL PER DIN41612 CLASS 2
E9 : PERFORMANCE LEVEL PER DIN41612 CLASS 1
OTHERS : CONSULT FCI
TIE--WRAP : OPTIONAL (PART N°. TF3)

PART NUMBERS

BPS8B09FLD0C0----- CONNECTOR FOR WIRE SIZE AWG28, AWG30.
(CONTACT IDENTIFICATION : 0).

BPS8B09FLD2C0----- CONNECTOR FOR WIRE SIZE AWG24, AWG26
(CONTACT IDENTIFICATION : 2).

AWG WIRE SIZE MARKING

BPS8B09FLD0C0-- : 28/30
BPS8B09FLD0C0--LF : 28/30
BPS8B09FLD2C0-- : 24/26
BPS8B09FLD2C0--LF : 24/26

DATECODE MARKING

A + YEAR & WEEKCODE, EXAMPLE : A9950.

[illegible]

WIRE ACCOMODATION			
PRODUCT	NUMBER	WIRE SIZE	CONTACT IDENTIFICATION
BPS8B09FLD000	--	AWG28/30	0
BPS8B09FLD200	--	AWG24/26	2

WITH "LF" SUFFIX	LEAD FREE OR RoHS COMPATIBLE PRODUCT
WITHOUT SUFFIX	LEADED PRODUCT

CONTACT PLATING	
PLATING CODE	PERFORMANCE LEVEL PER DIN41612
Z0	CLASS 3
Z1	CLASS 2
E9	CLASS 1

NOTES:-

1. THE "LF" PRODUCTS MEET EUROPEAN UNION DIRECTIVES AND OTHER COUNTRY REGULATIONS AS DESCRIBED IN GS-22-008
2. LEAD FREE OR RoHS DIRECTIVE LABELING TO BE PROVIDED AS PER GS-14-920 FOR RoHS COMPATIBLE VERSION.

PERFORMANCES CHARACTERISTICS

VOLTAGE RATING : 250 VAC (rms)

CURRENT RATING : 1,5 A AT 25 °C, 1 A AT 70 °C.

INSULATION RESISTANCE : 1000 MΩ INITIAL, 100 MΩ MIN. AFTER TEST

DIELECTRIC WITH—

STANDING VOLTAGE : 1000 VAC (rms).

CONTACT RESISTANCE : 15 mΩ MAX. INITIAL, 5 mΩ MAX. RISE
OF INITIAL VALUE AFTER TEST.

OPERATING TEMPERATURE*: -40 °C TO +125 °C.

INSERTION FORCE : 1 N MAX./CONTACT.

WITHDRAWAL FORCE : 0,2 N MIN./CONTACT.

*DEPENDING ON THE CABLE, THE MAX. TEMPERATURE CAN BE LOWER.

FOR STANDARD PVC INSULATED CABLE : 105 °C MAX.

CONSTRUCTION

BODY MATERIAL : GLASS-REINFORCED THERMOPLASTIC (UL94V-0).

CONTACT MATERIAL : PHOSPHOR BRONZE.

CONTACT FINISH : Au OVER Ni IN CONTACT AREA

SnPb ON I.D.C. TERMINAL FOR LEADED PRODUCTS.

Sn (MATTE TIN) ON I.D.C. TERMINAL FOR LEAD FREE PRODUCTS.

Z0 : PERFORMANCE LEVEL PER DIN41612 CLASS 3

Z1 : PERFORMANCE LEVEL PER DIN41612 CLASS 2

E9 : PERFORMANCE LEVEL PER DIN41612 CLASS 1

OTHERS : CONSULT FCI

PART NUMBERS

BPS8B09FLD000----- CONNECTOR FOR WIRE SIZE AWG28, AWG30.
(CONTACT IDENTIFICATION : 0).

BPS8B09FLD200----- CONNECTOR FOR WIRE SIZE AWG24, AWG26
(CONTACT IDENTIFICATION : 2).

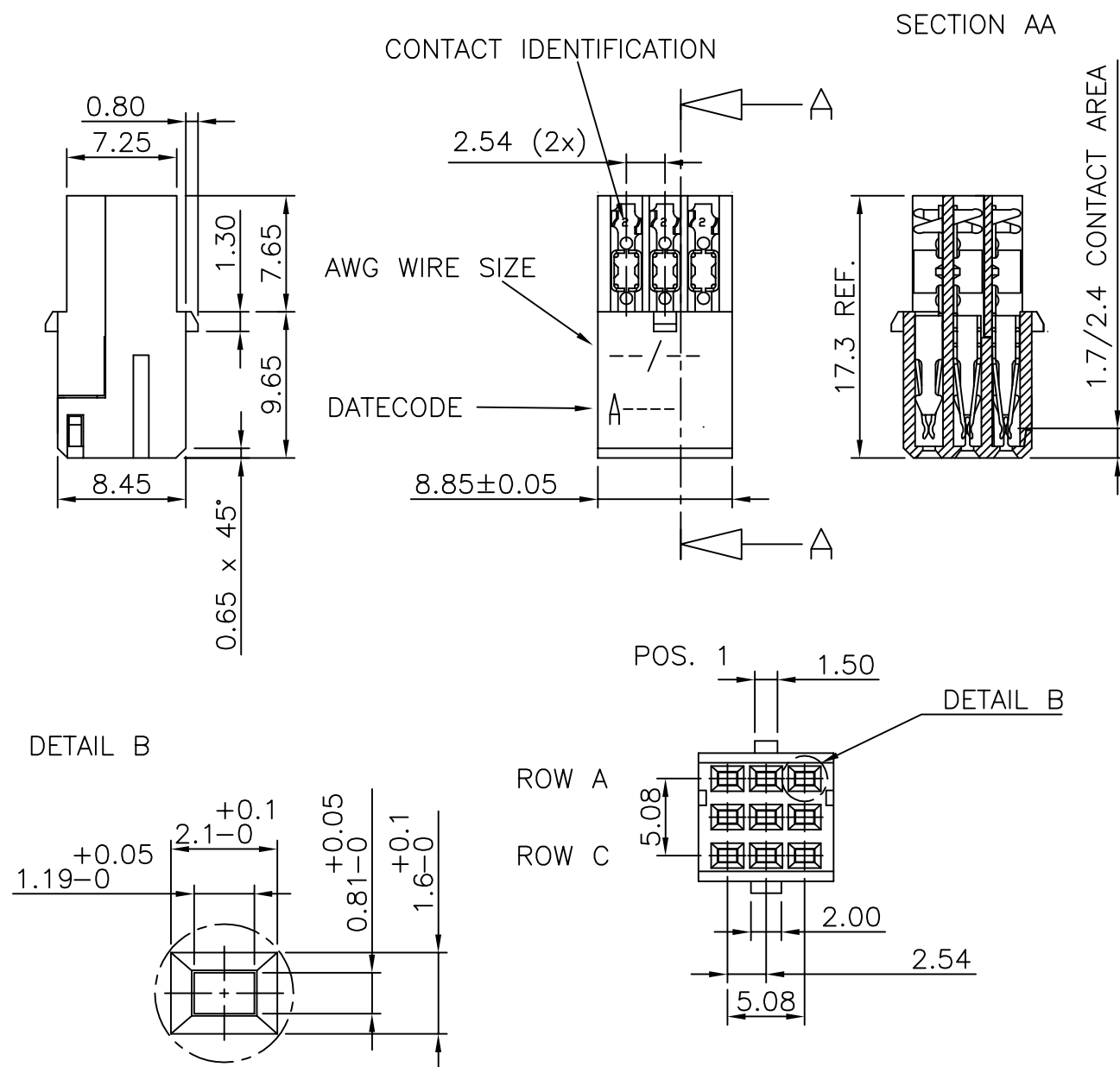
AWG WIRE SIZE MARKING

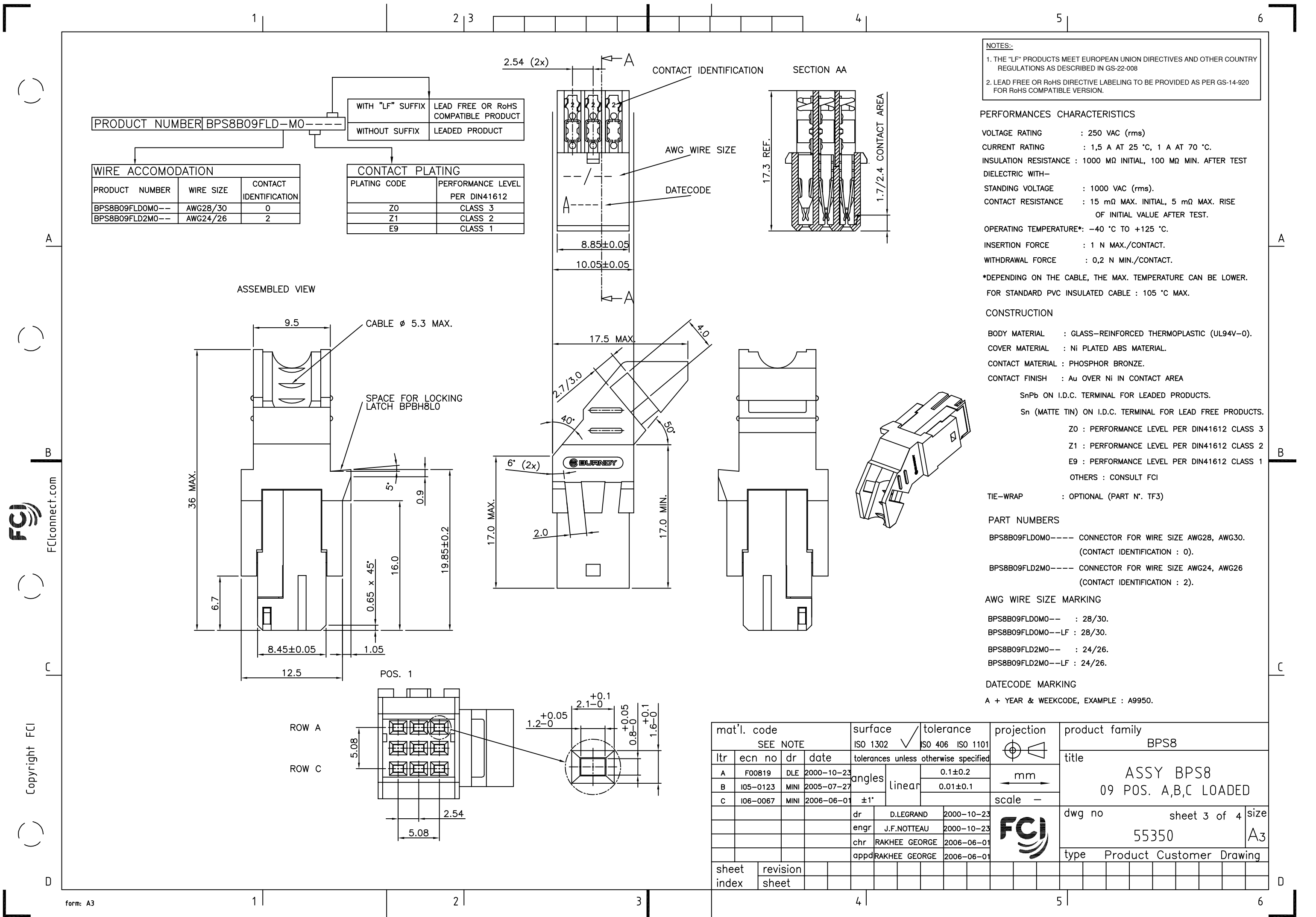
BPS8B09FLD000-- : 28/30
BPS8B09FLD000--LF : 28/30

BPS8B09FLD200-- : 24/26
BPS8B09FLD200--LF : 24/26

DATECODE MARKING

A + YEAR & WEEKCODE, EXAMPLE : A9950.

[illegible]



NOTES:-
1. THE "LF" PRODUCTS MEET EUROPEAN UNION DIRECTIVES AND OTHER COUNTRY REGULATIONS AS DESCRIBED IN GS-22-008
2. LEAD FREE OR RoHS DIRECTIVE LABELING TO BE PROVIDED AS PER GS-14-920 FOR RoHS COMPATIBLE VERSION.


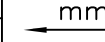
PERFORMANCES CHARACTERISTICS
VOLTAGE RATING : 250 VAC (rms)
CURRENT RATING : 1,5 A AT 25 °C, 1 A AT 70 °C.
INSULATION RESISTANCE : 1000 MΩ INITIAL, 100 MΩ MIN. AFTER TEST
DIELECTRIC WITH-
STANDING VOLTAGE : 1000 VAC (rms).
CONTACT RESISTANCE : 15 mΩ MAX. INITIAL, 5 mΩ MAX. RISE OF INITIAL VALUE AFTER TEST.
OPERATING TEMPERATURE*: -40 °C TO +125 °C.
INSERTION FORCE : 1 N MAX./CONTACT.
WITHDRAWAL FORCE : 0,2 N MIN./CONTACT.
*DEPENDING ON THE CABLE, THE MAX. TEMPERATURE CAN BE LOWER.
FOR STANDARD PVC INSULATED CABLE : 105 °C MAX.

CONSTRUCTION
BODY MATERIAL : GLASS-REINFORCED THERMOPLASTIC (UL94V-0).
COVER MATERIAL : Ni PLATED ABS MATERIAL.
CONTACT MATERIAL : PHOSPHOR BRONZE.
CONTACT FINISH : Au OVER Ni IN CONTACT AREA
SnPb ON I.D.C. TERMINAL FOR LEADED PRODUCTS.
Sn (MATTE TIN) ON I.D.C. TERMINAL FOR LEAD FREE PRODUCTS.
Z0 : PERFORMANCE LEVEL PER DIN41612 CLASS 3
Z1 : PERFORMANCE LEVEL PER DIN41612 CLASS 2
E9 : PERFORMANCE LEVEL PER DIN41612 CLASS 1
OTHERS : CONSULT FCI
TIE-WRAP : OPTIONAL (PART N°. TF3)

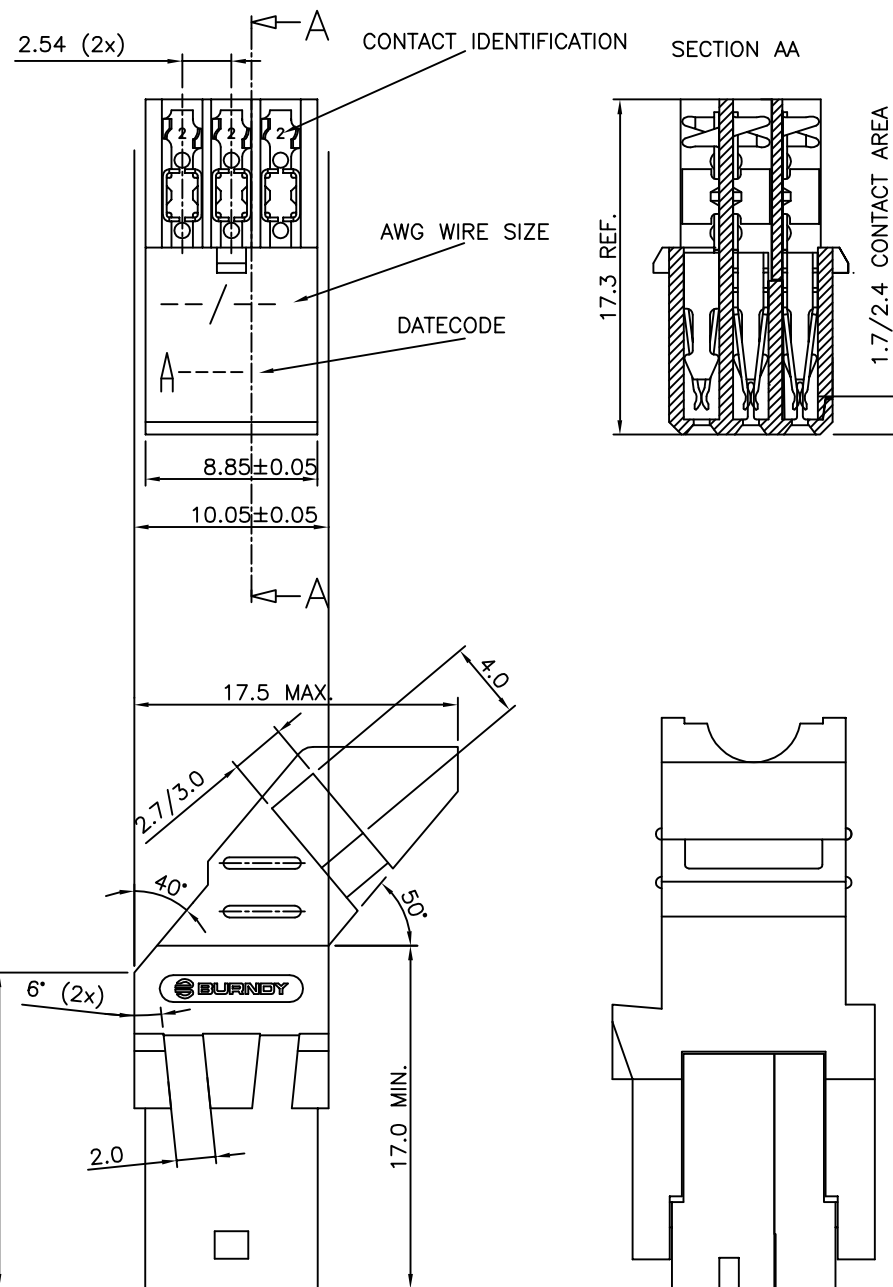
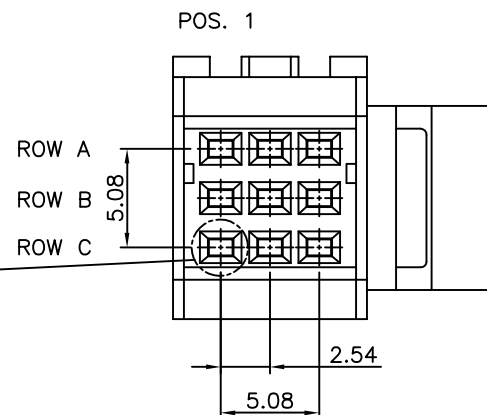
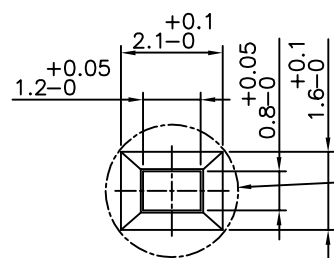
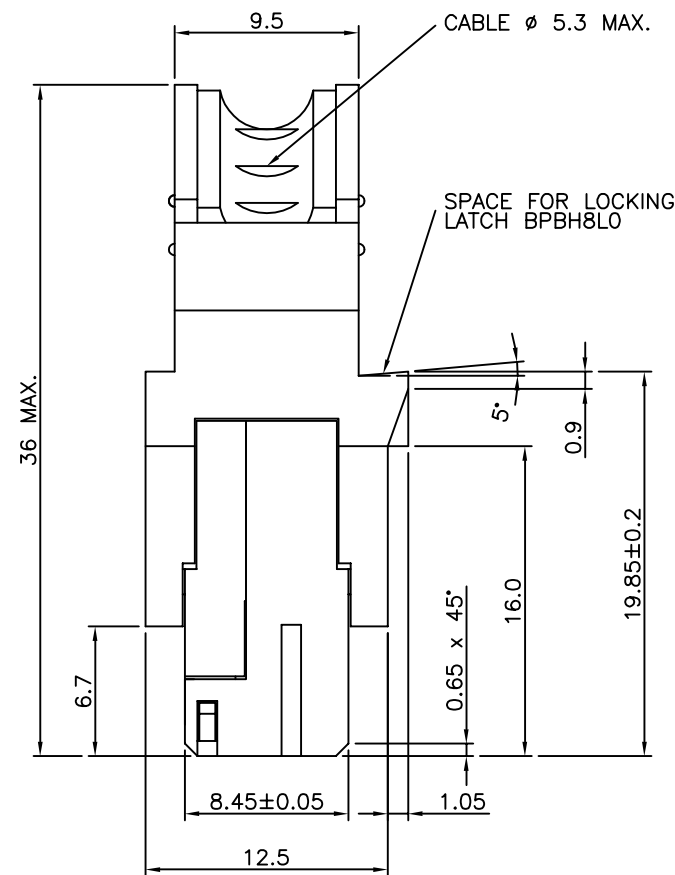
PART NUMBERS
BPS8B09FLD0M0---- CONNECTOR FOR WIRE SIZE AWG28, AWG30.
(CONTACT IDENTIFICATION : 0).
BPS8B09FLD2M0---- CONNECTOR FOR WIRE SIZE AWG24, AWG26
(CONTACT IDENTIFICATION : 2).

AWG WIRE SIZE MARKING
BPS8B09FLD0M0-- : 28/30.
BPS8B09FLD0M0--LF : 28/30.
BPS8B09FLD2M0-- : 24/26.
BPS8B09FLD2M0--LF : 24/26.

DATECODE MARKING
A + YEAR & WEEKCODE, EXAMPLE : A9950.

mat'l. code SEE NOTE				surface ISO 1302 ✓		tolerance ISO 406 ISO 1101		projection 		product family BPS8									
ltr		ecn no		dr	date	tolerances unless otherwise specified				title ASSY BPS8 09 POS. A,B,C LOADED									
A	F00819	DLE	2000-10-23	angles	linear	0.1±0.2													
B	I05-0123	MINI	2005-07-27			0.01±0.1													
C	I06-0067	MINI	2006-06-01	±1°				scale —		<div><div>dwg no</div><div>55350</div><div>sheet 3 of 4</div><div>size A3</div></div>									
				dr	D.LEGRAND	2000-10-23													
				engr	J.F.NOTTEAU	2000-10-23													
				chr	RAKHEE GEORGE	2006-06-01													
				appd	RAKHEE GEORGE	2006-06-01													
sheet index		revision sheet																	

ASSEMBLED VIEW



PRODUCT NUMBER BPS8B09FLD2CO--CM1

WIRE ACCOMODATION		
PRODUCT NUMBER	WIRE SIZE	CONTACT IDENTIFICATION
BPS8B09FLD2CO--CM1	AWG24/26	2

CONTACT PLATING			
PRODUCT NUMBER	PERFORMANCE LEVEL PER DIN41612	CONTACT AREA	IDC TERMINAL
BPS8B09FLD2COZOCM1	CLASSE 3	Au OVER Ni	SnPb
BPS8B09FLD2COZ1CM1	CLASSE 2	Au OVER Ni	SnPb
BPS8B09FLD2COE9CM1	CLASSE 1	Au OVER Ni	SnPb

PERFORMANCES CHARACTERISTICS

VOLTAGE RATING : 250 VAC (rms)
CURRENT RATING : 1,5 A AT 25 °C, 1 A AT 70 °C.
INSULATION RESISTANCE : 1000 MΩ INITIAL, 100 MΩ MIN. AFTER TEST
DIELECTRIC WITHSTANDING VOLTAGE : 1000 VAC (rms).
CONTACT RESISTANCE : 15 mΩ MAX. INITIAL, 5 mΩ MAX. RISE OF INITIAL VALUE AFTER TEST.
OPERATING TEMPERATURE*: -40 °C TO +125 °C.
INSERTION FORCE : 1 N MAX./CONTACT.
WITHDRAWAL FORCE : 0,2 N MIN./CONTACT.

*DEPENDING ON THE CABLE, THE MAX. TEMPERATURE CAN BE LOWER.
FOR STANDARD PVC INSULATED CABLE : 105 °C MAX.

CONSTRUCTION

BODY MATERIAL : GLASS-REINFORCED THERMOPLASTIC (UL94V-0).
COVER MATERIAL : POLYESTER (PBTP), COLOUR : BLACK.
CONTACT MATERIAL : PHOSPHOR BRONZE.
CONTACT FINISH : Au OVER Ni IN CONTACT AREA, SnPb ON I.D.C TERMINAL.

Z0 : PERFORMANCE LEVEL PER DIN41612 CLASS 3
Z1 : PERFORMANCE LEVEL PER DIN41612 CLASS 2
E9 : PERFORMANCE LEVEL PER DIN41612 CLASS 1
OTHERS : CONSULT FCI

TIE-WRAP : OPTIONAL (PART N° TF3)

PART NUMBERS

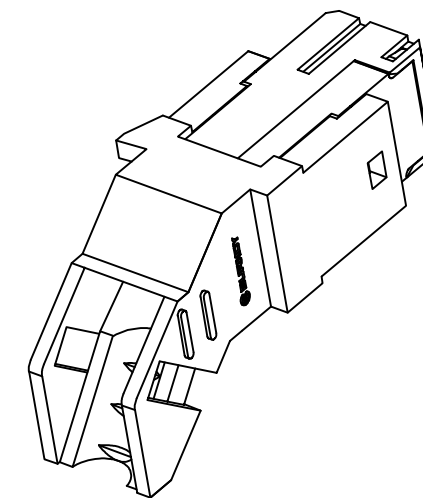
BPS8B09FLD2COZ1CM1 CONNECTOR FOR WIRE SIZE AWG24, AWG26.
(CONTACT IDENTIFICATION : 2).

CUSTOMER MARKING

BPS8B09FLD2COZ1CM1 : BPS8.

DATECODE MARKING

A + YEAR & WEEKCODE, EXAMPLE : A9950.



mat'l. code SEE NOTE				surface ISO 1302 ✓	tolerance ISO 406 ISO 1101	projection mm	product family BPS8			
ltr	ecn no	dr	date	tolerances unless otherwise specified		mm	title ASSY BPS8 09 POS. A,B,C LOADED			
A	F00819	DLE	2000-10-23	angles	linear					
B	I05-0123	MINI	2005-07-27	±1°		scale	dwg no 55350			
C	I06-0067	MINI	2006-06-01	±1°		scale	sheet 4 of 4 A3			
				dr	D.LEGRAND	2000-10-23	FCI			
				engr	J.F.NOTTEAU	2000-10-23				
				chr	RAKHEE GEORGE	2006-06-01				
				appd	RAKHEE GEORGE	2006-06-01				
sheet index	revision sheet						type Product Customer Drawing			