

Power Management Switch IC Series for PCs and Digital Consumer Product

# 1ch Large Current Output USB High Side Switch ICs

## BD2061AFJ, BD2065AFJ



### ●Description

Single channel high side switch IC for USB port is a high side switch having over current protection used in power supply line of universal serial bus (USB).

N-channel power MOSFET of low on resistance and low supply current are realized in this IC.

And, over current detection circuit, thermal shutdown circuit, under voltage lockout and soft start circuit are built in.

### ●Features

- 1) Low on resistance 80mΩ Nch MOSFET Switch.
- 2) Continuous current load 1.0A
- 3) Control input logic  
Active-Low : BD2061AFJ  
Active-High : BD2065AFJ
- 4) Soft start circuit
- 5) Over current detection
- 6) Thermal shutdown
- 7) Under voltage lockout
- 8) Open drain error flag output
- 9) Reverse-current protection when power switch off
- 10) Power supply voltage range 2.7V~5.5V
- 11) TTL Enable input
- 12) 1.2ms typical rise time
- 13) 10μA max standby current
- 14) Operating temperature range -40°C~85°C

### ●Applications

USB hub in consumer appliances, Car accessory, PC, PC peripheral equipment, and so forth

### ●Lineup

Parameter	BD2061AFJ	BD2065AFJ
Continuous current load (A)	1.0	1.0
Output current at short (A)	1.5	1.5
Control input logic	Low	High

●Absolute Maximum Ratings

Parameter	Symbol	Limits	Unit
Supply voltage	V <sub>IN</sub>	-0.3 to 6.0	V
Enable voltage	V <sub>EN</sub> , V/ <sub>EN</sub>	-0.3 to 6.0	V
/OC voltage	V/ <sub>OC</sub>	-0.3 to 6.0	V
/OC current	I <sub>S/OC</sub>	10	mA
OUT voltage	V <sub>OUT</sub>	-0.3 to 6.0	V
Storage temperature	T <sub>STG</sub>	-55 to 150	°C
Power dissipation	PD	560 <sup>*1</sup>	mW

\*1 In the case of exceeding Ta = 25°C, 4.48mW should be reduced per 1°C.

\* This chip is not designed to protect itself against radioactive rays.

●Operating conditions

Parameter	Symbol	Limits	Unit
Operating voltage	V <sub>IN</sub>	2.7 to 5.5	V
Operating temperature	T <sub>OPR</sub>	-40 to 85	°C
Continuous output current	I <sub>LO</sub>	0 to 1.0	A

●Electrical characteristics

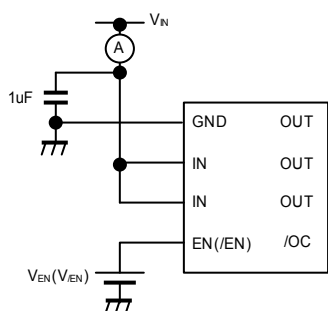
◎BD2061AFJ (Unless otherwise specified,  $V_{IN} = 5.0V$ ,  $T_a = 25^{\circ}C$ )

Parameter	Symbol	Limits			Unit	Condition
		Min.	Typ.	Max.		
Operating Current	$I_{DD}$	-	90	120	$\mu A$	$V_{/EN} = 0V$ , OUT = OPEN
Standby Current	$I_{STB}$	-	0.01	1	$\mu A$	$V_{/EN} = 5V$ , OUT = OPEN
/EN input voltage	$V_{/EN}$	2.0	-	-	V	High input
	$V_{/EN}$	-	-	0.8	V	Low input
		-	-	0.4	V	Low input $2.7V \leq V_{IN} \leq 4.5V$
/EN input current	$I_{/EN}$	-1.0	0.01	1.0	$\mu A$	$V_{/EN} = 0V$ or $V_{/EN} = 5V$
/OC output LOW voltage	$V_{/OC}$	-	-	0.5	V	$I_{/OC} = 5mA$
/OC output leak current	$I_{L/OC}$	-	0.01	1	$\mu A$	$V_{/OC} = 5V$
/OC delay time	$T_{D/OC}$	-	2.5	8	ms	
ON resistance	$R_{ON}$	-	80	100	m $\Omega$	$I_{OUT} = 1.0A$
Output current at short	$I_{SC}$	1.1	1.5	1.9	A	$V_{IN} = 5V$ , $V_{OUT} = 0V$ , $C_L = 100\mu F$ (RMS)
Output rise time	$T_{ON1}$	-	1.2	10	ms	$R_L = 10\Omega$ , $C_L = OPEN$
Output turn on time	$T_{ON2}$	-	1.5	20	ms	
Output fall time	$T_{OFF1}$	-	1	20	$\mu s$	
Output turn off time	$T_{OFF2}$	-	3	40	$\mu s$	
UVLO threshold	$V_{TUVH}$	2.1	2.3	2.5	V	Increasing $V_{IN}$
	$V_{TUVL}$	2.0	2.2	2.4	V	Decreasing $V_{IN}$

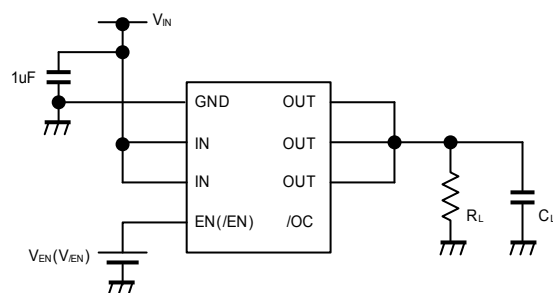
©BD2065AFJ (Unless otherwise specified,  $V_{IN} = 5.0V$ ,  $T_a = 25^{\circ}C$ )

Parameter	Symbol	Limits			Unit	Condition
		Min.	Typ.	Max.		
Operating Current	$I_{DD}$	-	90	120	$\mu A$	$V_{EN} = 5V$ , OUT = OPEN
Standby Current	$I_{STB}$	-	0.01	1	$\mu A$	$V_{EN} = 0V$ , OUT = OPEN
EN input voltage	$V_{EN}$	2.0	-	-	V	High input
	$V_{EN}$	-	-	0.8	V	Low input
		-	-	0.4	V	Low input $2.7V \leq V_{IN} \leq 4.5V$
EN input current	$I_{EN}$	-1.0	0.01	1.0	$\mu A$	$V_{EN} = 0V$ or $V_{EN} = 5V$
/OC output LOW voltage	$V_{/OC}$	-	-	0.5	V	$I_{/OC} = 5mA$
/OC output leak current	$I_{L/OC}$	-	0.01	1	$\mu A$	$V_{/OC} = 5V$
/OC delay time	$TD_{/OC}$	-	2.5	8	ms	
ON resistance	$R_{ON}$	-	80	100	m $\Omega$	$I_{OUT} = 1.0A$
Output current at short	$I_{SC}$	1.1	1.5	1.9	A	$V_{IN} = 5V$ , $V_{OUT} = 0V$ , $C_L = 100\mu F$ (RMS)
Output rise time	$T_{ON1}$	-	1.2	10	ms	$R_L = 10\Omega$ , $C_L = OPEN$
Output turn on time	$T_{ON2}$	-	1.5	20	ms	
Output fall time	$T_{OFF1}$	-	1	20	$\mu s$	
Output turn off time	$T_{OFF2}$	-	3	40	$\mu s$	
UVLO Threshold	$V_{TUVH}$	2.1	2.3	2.5	V	Increasing $V_{IN}$
	$V_{TUVL}$	2.0	2.2	2.4	V	Decreasing $V_{IN}$

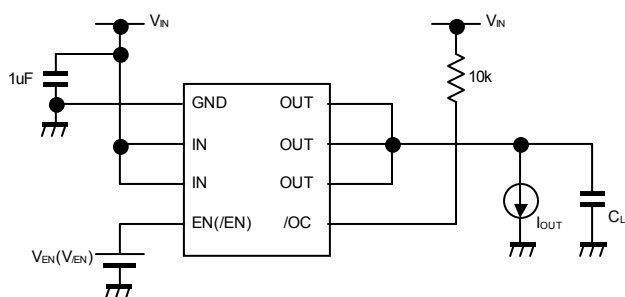
- Measurement circuit



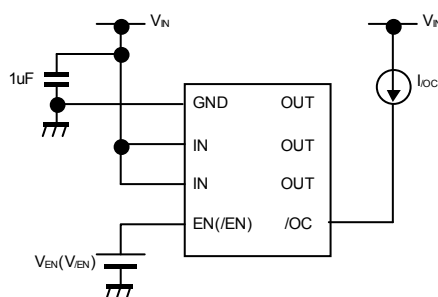
Operating current



EN, /EN input voltage, Output rise, fall time



ON resistance, Over current detection



/OC output LOW voltage

Fig.1 Measurement circuit

- Timing diagram

○BD2061AFJ

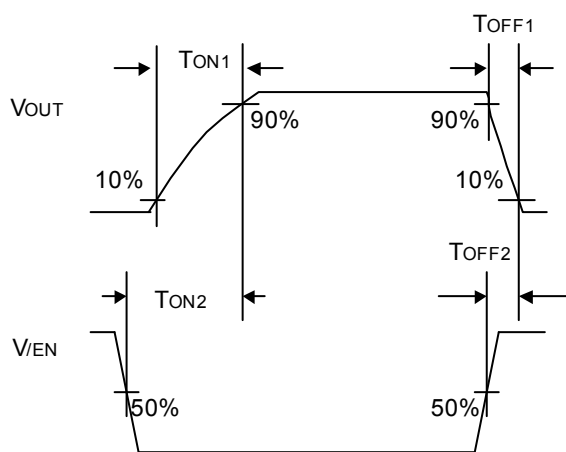


Fig.2 Timing diagram

○BD2065AFJ

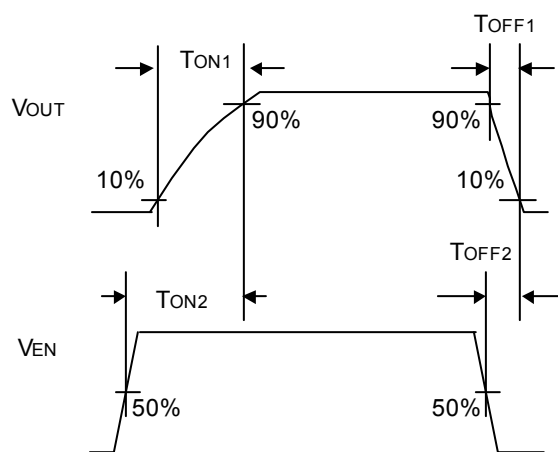


Fig.3 Timing diagram

●Reference data

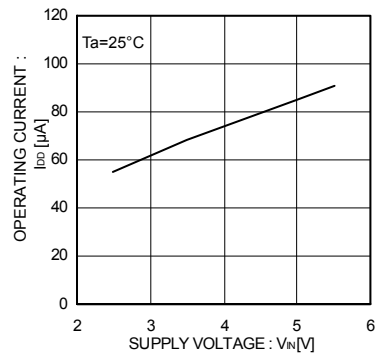


Fig.4 Operating current  
EN,/EN Enable

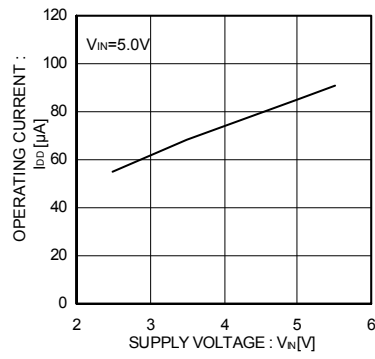


Fig.5 Operating current  
EN,/EN Enable

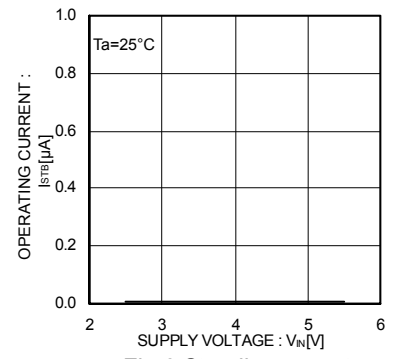


Fig.6 Standby current  
EN,/EN Disable

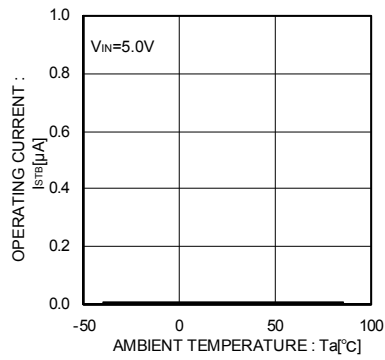


Fig.7 Operating current  
EN,/EN Disable

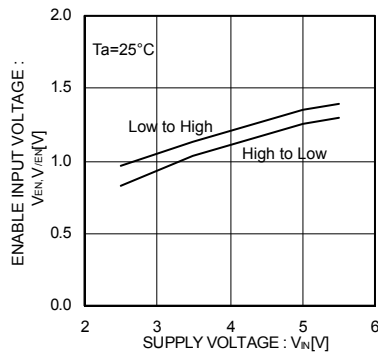


Fig.8 EN,/EN input voltage

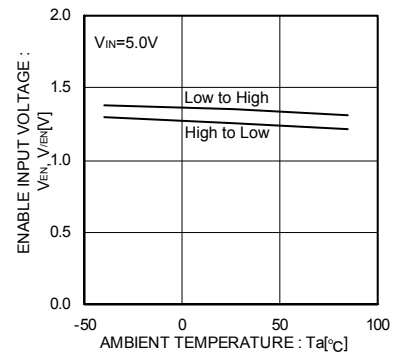


Fig.9 EN,/EN input voltage

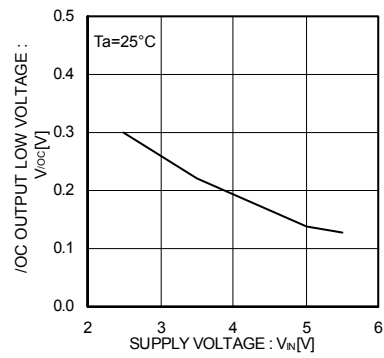


Fig.10 /OC output LOW voltage

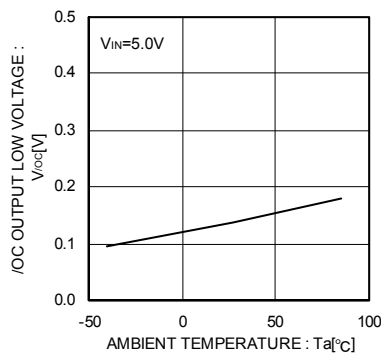


Fig.11 /OC output LOW voltage

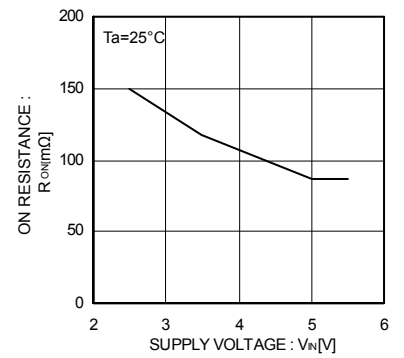


Fig.12 ON resistance

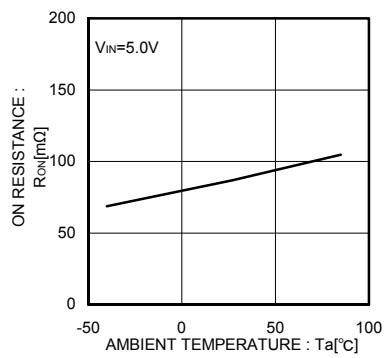


Fig.13 ON resistance

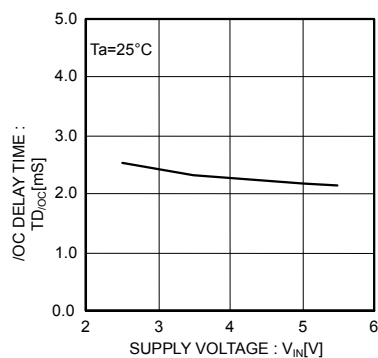


Fig.14 /OC output delay time

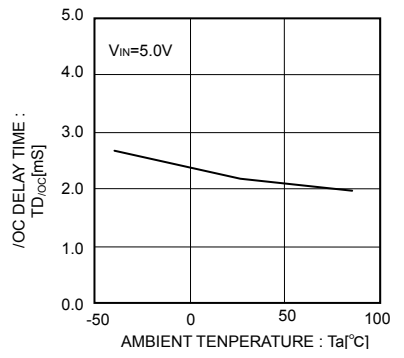


Fig.15 /OC output delay time

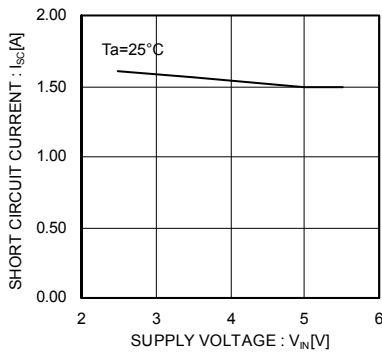


Fig.16 Output current at shortcircuit

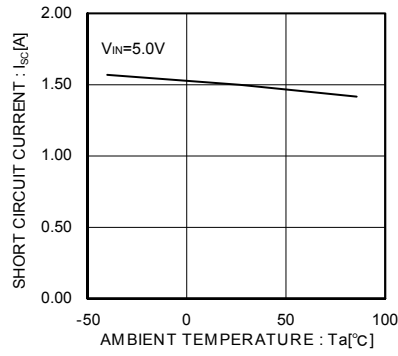


Fig.17 Output current at shortcircuit

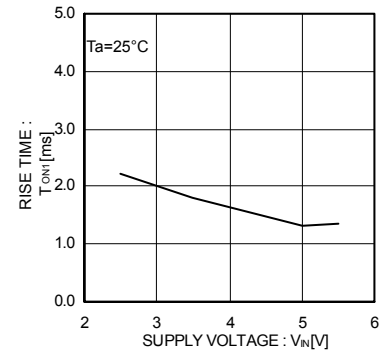


Fig.18 Output rise time

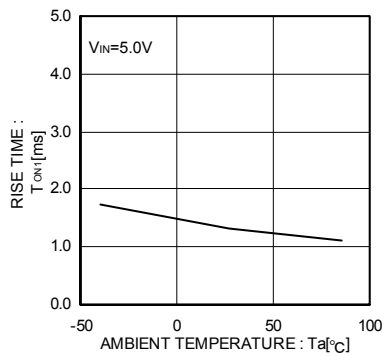


Fig.19 Output rise time

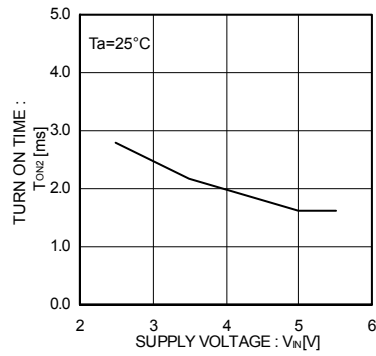


Fig.20 Output turn on time

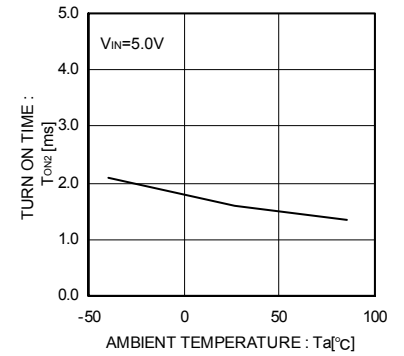


Fig.21 Output turn on time

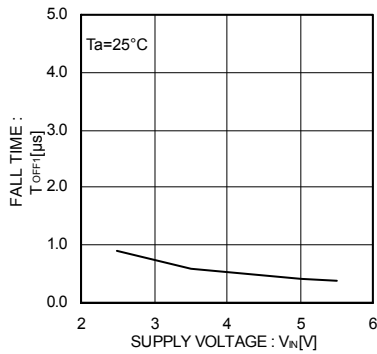


Fig.22 Output fall time

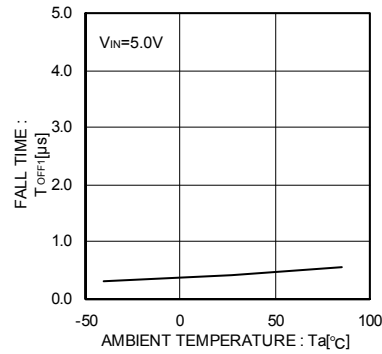


Fig.23 Output fall time

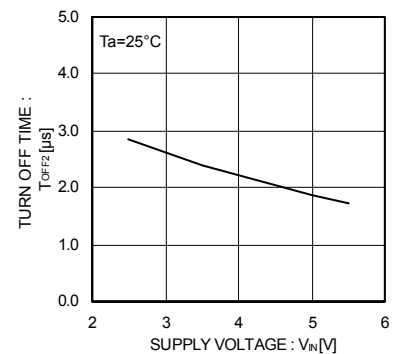


Fig.24 Output turn off time

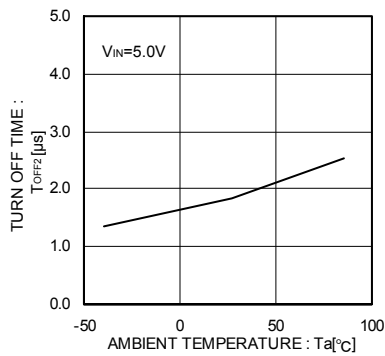


Fig.25 Output turn off time

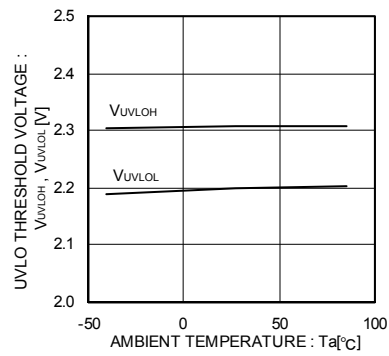


Fig.26 UVLO threshold voltage

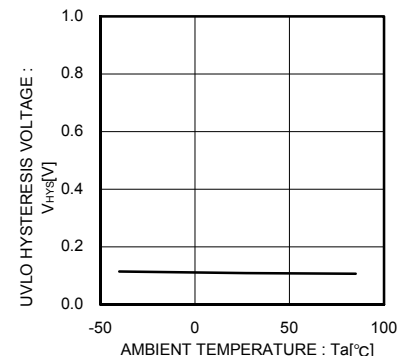


Fig.27 UVLO hysteresis voltage

●Waveform data

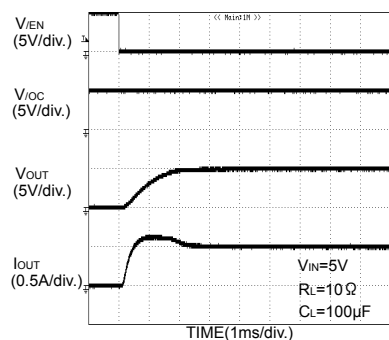


Fig.28 Output rise characteristic (BD2061AFJ)

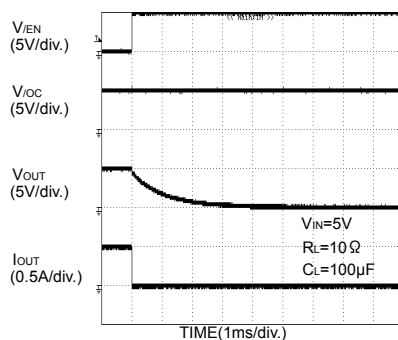


Fig.29 Output fall characteristic (BD2061AFJ)

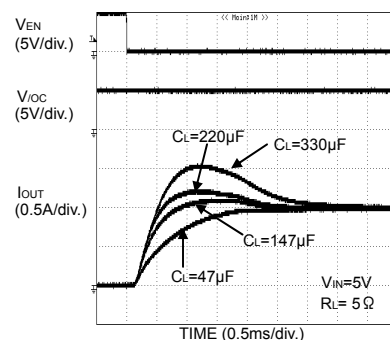


Fig.30 Inrush current response (BD2061AFJ)

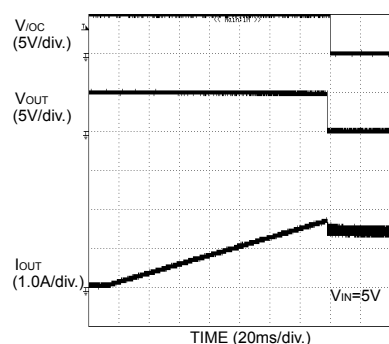


Fig.31 Over current response Ramped load (BD2061AFJ)

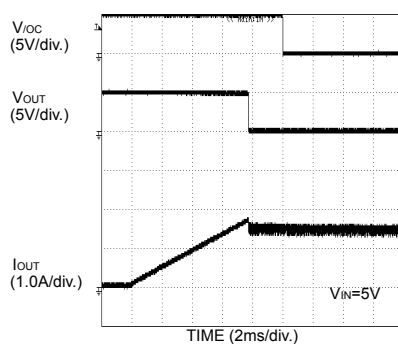


Fig.32 Over current response Ramped load (BD2061AFJ)

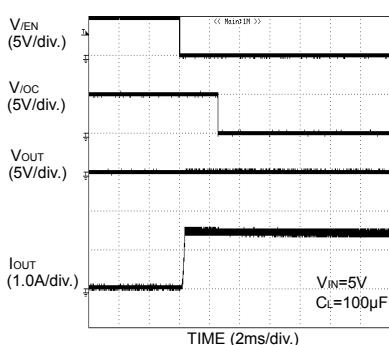


Fig.33 Over current response Enable to shortcircuit (BD2061AFJ)

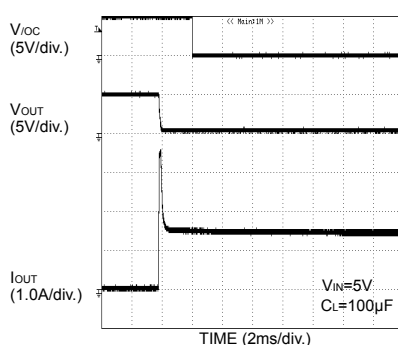


Fig.34 Over current response Enable to shortcircuit (BD2061AFJ)

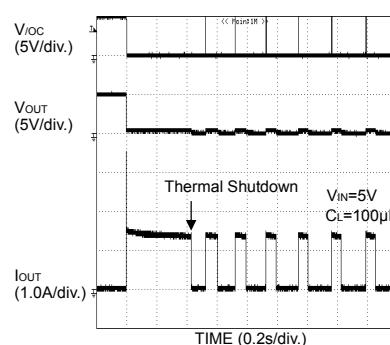


Fig.35 Over current response Enable to shortcircuit (BD2061AFJ)

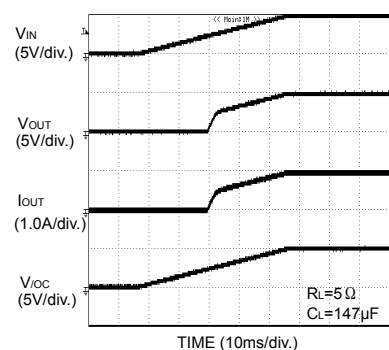


Fig.36 UVLO response Increasing  $V_{IN}$  (BD2061AFJ)

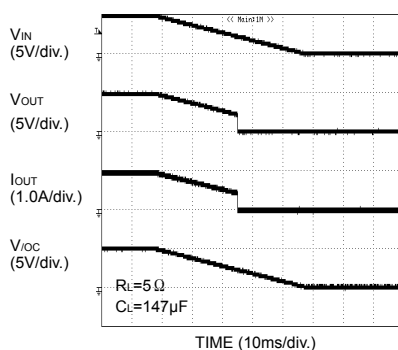


Fig.37 UVLO response Decreasing  $V_{IN}$  (BD2061AFJ)

Regarding the output rise/fall and over current detection characteristics of BD2065AFJ, refer to the characteristic of BD2061AFJ.



● Block diagram

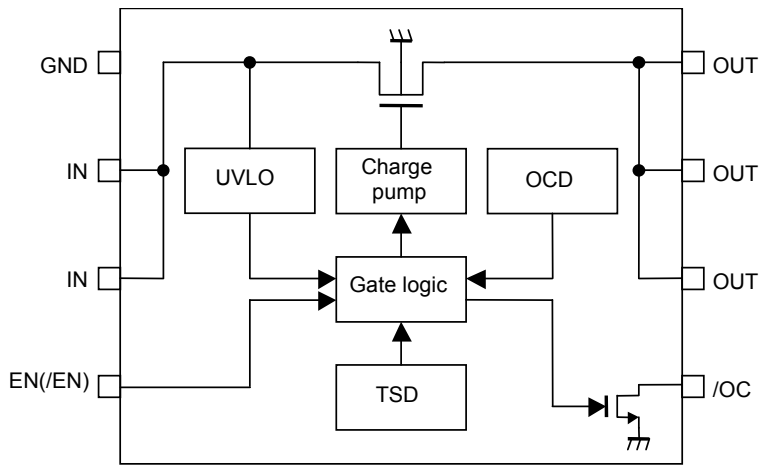


Fig.38 Block diagram

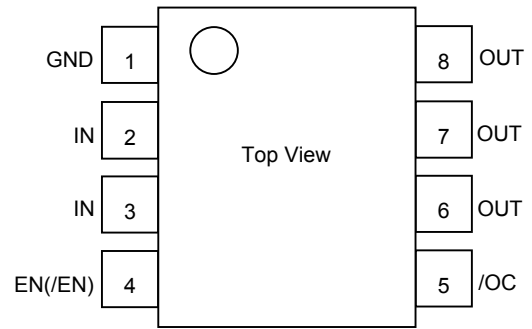


Fig.39 Pin Configuration

●Pin description

©BD2061AFJ

Pin No.	Symbol	I / O	Pin function
1	GND	I	Ground.
2, 3	IN	I	Power supply input. Input terminal to the power switch and power supply input terminal of the internal circuit. At use, connect each pin outside.
4	/EN	I	Enable input. Power switch on at Low level. High level input > 2.0V, Low level input < 0.8V.
5	/OC	O	Error flag output. Low at over current, thermal shutdown. Open drain output.
6, 7, 8	OUT	O	Power switch output. At use, connect each pin outside.

©BD2065AFJ

Pin No.	Symbol	I / O	Pin function
1	GND	I	Ground.
2, 3	IN	I	Power supply input. Input terminal to the power switch and power supply input terminal of the internal circuit. At use, connect each pin outside.
4	EN	I	Enable input. Power switch on at High level. High level input > 2.0V, Low level input < 0.8V
5	/OC	O	Error flag output. Low at over current, thermal shutdown. Open drain output.
6, 7, 8	OUT	O	Power switch output. At use, connect each pin outside.

●I/O circuit

Symbol	Pin No	Equivalent circuit
EN(/EN)	4	
/OC	5	
OUT	6,7,8	

## ●Functional description

### 1. Switch operation

IN terminal and OUT terminal are connected to the drain and the source of switch MOSFET respectively. And the IN terminal is used also as power source input to internal control circuit.

When the switch is turned on from EN/EN control input, IN terminal and OUT terminal are connected by a 80mΩ switch. In on status, the switch is bidirectional. Therefore, when the potential of OUT terminal is higher than that of IN terminal, current flows from OUT terminal to IN terminal.

Since a parasitic diode between the drain and the source of switch MOSFET is canceled, in the off status, it is possible to prevent current from flowing reversely from OUT to IN.

### 2. Thermal shutdown circuit (TSD)

If over current would continue, the temperature of the IC would increase drastically. If the junction temperature were beyond 140°C (typ.) in the condition of over current detection, thermal shutdown circuit operates and makes power switch turn off and outputs error flag (/OC). Then, when the junction temperature decreases lower than 120°C (typ.), power switch is turned on and error flag (/OC) is cancelled. Unless the fact of the increasing chips temperature is removed or the output of power switch is turned off, this operation repeats.

The thermal shutdown circuit operates when the switch is on (EN,/EN signal is active).

### 3. Over current detection (OCD)

The over current detection circuit limits current ( $I_{SC}$ ) and outputs error flag (/OC) when current flowing in each switch MOSFET exceeds a specified value. There are three types of response against over current. The over current detection circuit works when the switch is on (EN,/EN signal is active).

#### 3-1. When the switch is turned on while the output is in shortcircuit status

When the switch is turned on while the output is in shortcircuit status or so, the switch gets in current limit status soon.

#### 3-2. When the output shortcircuits while the switch is on

When the output shortcircuits or large capacity is connected while the switch is on, very large current flows until the over current limit circuit reacts. When the current detection, limit circuit works, current limitation is carried out.

#### 3-3. When the output current increases gradually

When the output current increases gradually, current limitation does not work until the output current exceeds the over current detection value. When it exceeds the detection value, current limitation is carried out.

### 4. Under voltage lockout (UVLO)

UVLO circuit prevents the switch from turning on until the  $V_{IN}$  exceeds 2.3V(Typ.). If the  $V_{IN}$  drops below 2.2V(Typ.) while the switch turns on, then UVLO shuts off the power switch. UVLO has hysteresis of a 100mV(Typ.).

Under voltage lockout circuit works when the switch is on (EN,/EN signal is active).

### 5. Error flag (/OC) output

Error flag output is N-MOS open drain output. At detection of over current, thermal shutdown, low level is output.

Over current detection has delay filter. This delay filter prevents instantaneous current detection such as inrush current at switch on, hot plug from being informed to outside.

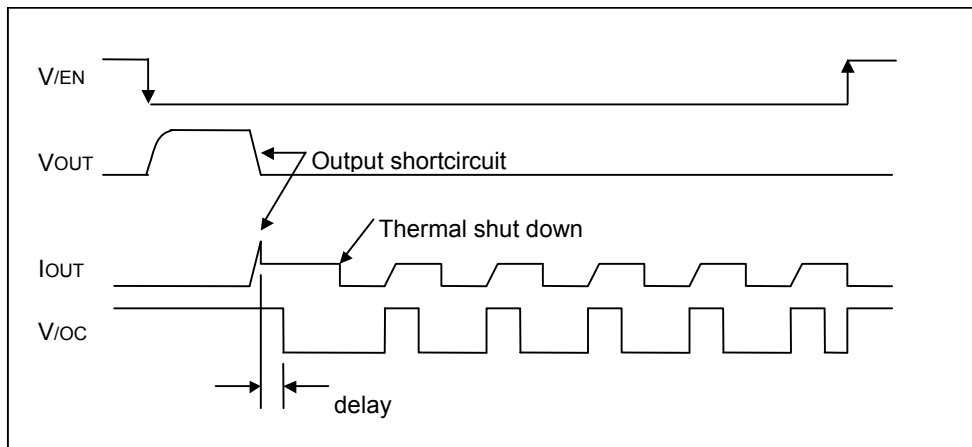


Fig.40 Over current detection, thermal shutdown timing  
(BD2061AFJ)

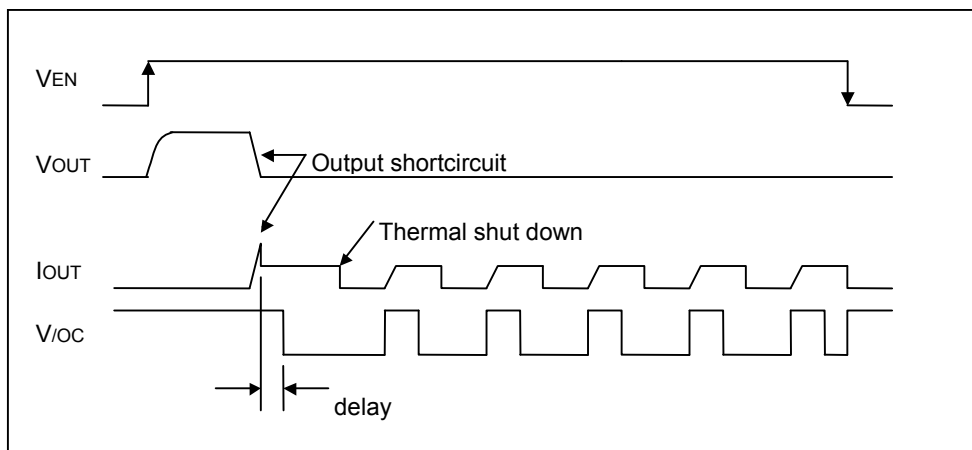


Fig.41 Over current detection, thermal shutdown timing  
(BD2065AFJ)

●Typical application circuit

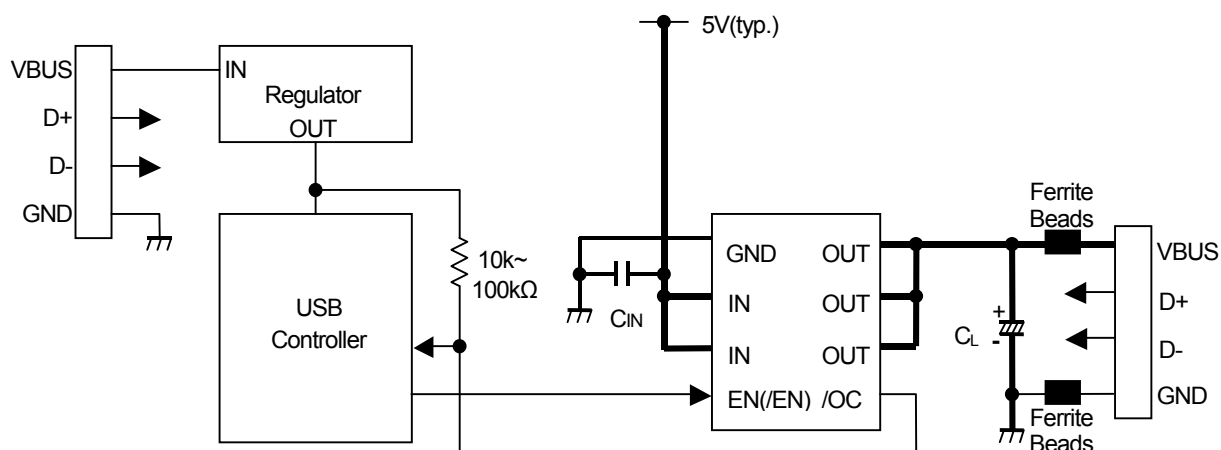


Fig.42 Typical application circuit

- Application information

When excessive current flows owing to output shortcircuit or so, ringing occurs by inductance of power source line to IC, and may cause bad influences upon IC actions. In order to avoid this case, connect a bypath capacitor by IN terminal and GND terminal of IC. 1μF or higher is recommended.

Pull up /OC output by resistance  $10\text{k}\Omega \sim 100\text{k}\Omega$ .

Set up value which satisfies the application as CL and Ferrite Beads.

This system connection diagram doesn't guarantee operating as the application.

The external circuit constant and so on is changed and it uses, in which there are adequate margins by taking into account external parts or dispersion of IC including not only static characteristics but also transient characteristics.

## ●Power dissipation character

(SOP-J8)

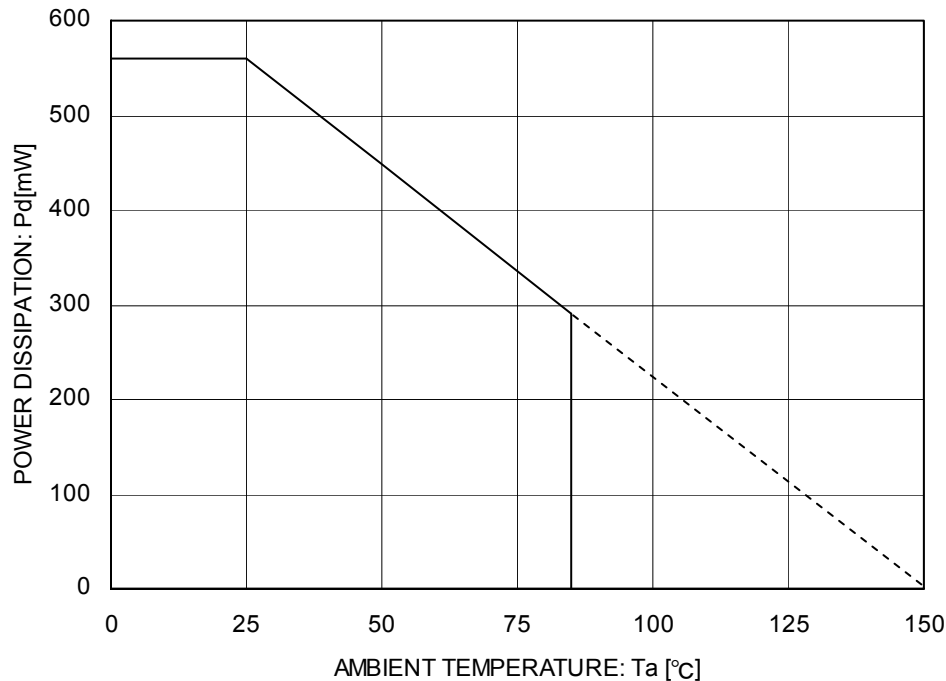


Fig.43 Power dissipation curve (Pd-Ta Curve)

## ●Cautions on use

### (1) Absolute Maximum Ratings

An excess in the absolute maximum ratings, such as supply voltage, temperature range of operating conditions, etc., can break down devices, thus making impossible to identify breaking mode such as a short circuit or an open circuit. If any special mode exceeding the absolute maximum ratings is assumed, consideration should be given to take physical safety measures including the use of fuses, etc.

### (2) Operating conditions

These conditions represent a range within which characteristics can be provided approximately as expected. The electrical characteristics are guaranteed under the conditions of each parameter.

### (3) Reverse connection of power supply connector

The reverse connection of power supply connector can break down ICs. Take protective measures against the breakdown due to the reverse connection, such as mounting an external diode between the power supply and the IC's power supply terminal.

### (4) Power supply line

Design PCB pattern to provide low impedance for the wiring between the power supply and the GND lines. In this regard, for the digital block power supply and the analog block power supply, even though these power supplies has the same level of potential, separate the power supply pattern for the digital block from that for the analog block, thus suppressing the diffraction of digital noises to the analog block power supply resulting from impedance common to the wiring patterns. For the GND line, give consideration to design the patterns in a similar manner.

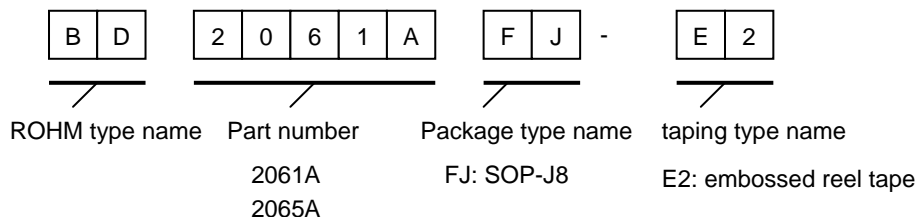
Furthermore, for all power supply terminals to ICs, mount a capacitor between the power supply and the GND terminal. At the same time, in order to use an electrolytic capacitor, thoroughly check to be sure the characteristics of the capacitor to be used present no problem including the occurrence of capacity dropout at a low temperature, thus determining the constant.

### (5) GND voltage

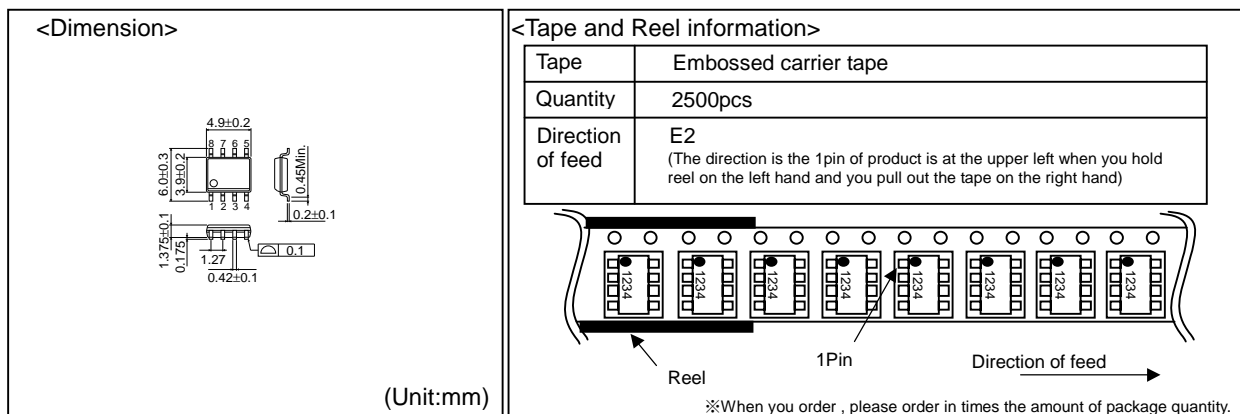
Make setting of the potential of the GND terminal so that it will be maintained at the minimum in any operating state. Furthermore, check to be sure no terminals are at a potential lower than the GND voltage including an actual electric transient.

- (6) Short circuit between terminals and erroneous mounting  
In order to mount ICs on a set PCB, pay thorough attention to the direction and offset of the ICs. Erroneous mounting can break down the ICs. Furthermore, if a short circuit occurs due to foreign matters entering between terminals or between the terminal and the power supply or the GND terminal, the ICs can break down.
- (7) Operation in strong electromagnetic field  
Be noted that using ICs in the strong electromagnetic field can malfunction them.
- (8) Inspection with set PCB  
On the inspection with the set PCB, if a capacitor is connected to a low-impedance IC terminal, the IC can suffer stress. Therefore, be sure to discharge from the set PCB by each process. Furthermore, in order to mount or dismount the set PCB to/from the jig for the inspection process, be sure to turn OFF the power supply and then mount the set PCB to the jig. After the completion of the inspection, be sure to turn OFF the power supply and then dismount it from the jig. In addition, for protection against static electricity, establish a ground for the assembly process and pay thorough attention to the transportation and the storage of the set PCB.
- (9) Input terminals  
In terms of the construction of IC, parasitic elements are inevitably formed in relation to potential. The operation of the parasitic element can cause interference with circuit operation, thus resulting in a malfunction and then breakdown of the input terminal. Therefore, pay thorough attention not to handle the input terminals, such as to apply to the input terminals a voltage lower than the GND respectively, so that any parasitic element will operate. Furthermore, do not apply a voltage to the input terminals when no power supply voltage is applied to the IC. In addition, even if the power supply voltage is applied, apply to the input terminals a voltage lower than the power supply voltage or within the guaranteed value of electrical characteristics.
- (10) Ground wiring pattern  
If small-signal GND and large-current GND are provided, It will be recommended to separate the large-current GND pattern from the small-signal GND pattern and establish a single ground at the reference point of the set PCB so that resistance to the wiring pattern and voltage fluctuations due to a large current will cause no fluctuations in voltages of the small-signal GND. Pay attention not to cause fluctuations in the GND wiring pattern of external parts as well.
- (11) External capacitor  
In order to use a ceramic capacitor as the external capacitor, determine the constant with consideration given to a degradation in the nominal capacitance due to DC bias and changes in the capacitance due to temperature, etc.
- (12) Thermal shutdown circuit (TSD)  
When junction temperatures become detected temperatures or higher, the thermal shutdown circuit operates and turns a switch OFF. The thermal shutdown circuit, which is aimed at isolating the LSI from thermal runaway as much as possible, is not aimed at the protection or guarantee of the LSI. Therefore, do not continuously use the LSI with this circuit operating or use the LSI assuming its operation.
- (13) Thermal design  
Perform thermal design in which there are adequate margins by taking into account the power dissipation (Pd) in actual states of use.

●Order type name selection



## SOP-J8



- The contents described herein are correct as of October, 2008
- The contents described herein are subject to change without notice. For updates of the latest information, please contact and confirm with ROHM CO.,LTD.
- Any part of this application note must not be duplicated or copied without our permission.
- Application circuit diagrams and circuit constants contained herein are shown as examples of standard use and operation. Please pay careful attention to the peripheral conditions when designing circuits and deciding upon circuit constants in the set.
- Any data, including, but not limited to application circuit diagrams and information, described herein are intended only as illustrations of such devices and not as the specifications for such devices. ROHM CO.,LTD. disclaims any warranty that any use of such devices shall be free from infringement of any third party's intellectual property rights or other proprietary rights, and further, assumes no liability of whatsoever nature in the event of any such infringement, or arising from or connected with or related to the use of such devices.
- Upon the sale of any such devices, other than for buyer's right to use such devices itself, resell or otherwise dispose of the same, implied right or license to practice or commercially exploit any intellectual property rights or other proprietary rights owned or controlled by ROHM CO., LTD, is granted to any such buyer.
- The products described herein utilize silicon as the main material.
- The products described herein are not designed to be X ray proof.

The products listed in this catalog are designed to be used with ordinary electronic equipment or devices (such as audio visual equipment, office-automation equipment, communications devices, electrical appliances and electronic toys). Should you intend to use these products with equipment or devices which require an extremely high level of reliability and the malfunction of which would directly endanger human life (such as medical instruments, transportation equipment, aerospace machinery, nuclear-reactor controllers, fuel controllers and other safety devices), please be sure to consult with our sales representative in advance.

### Contact us for further information about the products.

Excellence in Electronics

# ROHM

## ROHM CO., LTD.

21 Saiin Mizosaki-cho, Ukyo-ku, Kyoto  
615-8585, Japan  
TEL: +81-75-311-2121 FAX: +81-75-315-0172  
URL: <http://www.rohm.com>

Published by  
KTC LSI Development Headquarters  
LSI Business Promotion Group

**San Diego**  
**Atlanta**  
**Boston**  
**Chicago**  
**Dallas**  
**Denver**  
**Detroit**  
**Nashville**  
**Mexico**  
**Düsseldorf**  
**Munich**  
**Stuttgart**  
**France**  
**United Kingdom**  
**Denmark**  
**Espoo**  
**Salò**  
**Oulu**  
**Barcelona**  
**Hungary**  
**Poland**  
**Russia**  
**Seoul**  
**Masan**  
**Dalian**  
**Beijing**

TEL: +1-858-625-3630  
TEL: +1-770-754-5972  
TEL: +1-978-371-0382  
TEL: +1-847-368-1006  
TEL: +1-469-287-5366  
TEL: +1-303-708-0908  
TEL: +1-248-348-9920  
TEL: +1-615-620-6700  
TEL: +52-33-3123-2001  
TEL: +49-2154-9210  
TEL: +49-8999-216168  
TEL: +49-711-7272-370  
TEL: +33-1-5697-3060  
TEL: +44-1-908-306700  
TEL: +45-3694-4739  
TEL: +358-9725-54491  
TEL: +358-2-7332234  
TEL: +358-8-5372930  
TEL: +34-9375-24320  
TEL: +36-1-4719338  
TEL: +48-22-5757213  
TEL: +7-495-739-41-74  
TEL: +82-2-8182-700  
TEL: +82-55-240-6234  
TEL: +86-411-8230-8549  
TEL: +86-10-8525-2483

FAX: +1-858-625-3670  
FAX: +1-770-754-0691  
FAX: +1-928-438-7164  
FAX: +1-847-368-1008  
FAX: +1-469-362-7973  
FAX: +1-303-708-0858  
FAX: +1-248-348-9942  
FAX: +1-615-620-6702  
FAX: +52-33-3123-2002  
FAX: +49-2154-921400  
FAX: +49-8999-216176  
FAX: +49-711-7272-3720  
FAX: +33-1-5697-3080  
FAX: +44-1-908-235788  
FAX: +45-3694-4789  
FAX: +358-9-7255-4499  
FAX: +358-2-7332237  
FAX: +358-8-5372931  
FAX: +34-9375-24410  
FAX: +36-1-4719339  
FAX: +48-22-5757001  
FAX: +7-495-739-41-74  
FAX: +82-2-8182-715  
FAX: +82-55-240-6236  
FAX: +86-411-8230-8537  
FAX: +86-10-8525-2489

**Tianjin**  
**Shanghai**  
**Hangzhou**  
**Nanjing**  
**Ningbo**  
**Qingdao**  
**Suzhou**  
**Wuxi**  
**Shenzhen**  
**Dongguan**  
**Fuzhou**  
**Guangzhou**  
**Huizhou**  
**Xiamen**  
**Zhuhai**  
**Hong Kong**  
**Taipei**  
**Kaohsiung**  
**Singapore**  
**Philippines**  
**Thailand**  
**Kuala Lumpur**  
**Penang**  
**Kyoto**  
**Yokohama**

TEL: +86-22-23029181  
TEL: +86-21-6279-2727  
TEL: +86-571-87658072  
TEL: +86-25-8689-0015  
TEL: +86-574-87654201  
TEL: +86-532-5779-312  
TEL: +86-512-6807-1300  
TEL: +86-510-82702693  
TEL: +86-755-8307-3008  
TEL: +86-769-8393-3320  
TEL: +86-591-8801-8698  
TEL: +86-20-3878-8100  
TEL: +86-752-205-1054  
TEL: +86-592-238-5705  
TEL: +86-756-3232-480  
TEL: +852-2-740-6262  
TEL: +886-2-2500-6956  
TEL: +886-7-237-0881  
TEL: +65-6332-2322  
TEL: +63-2-807-6872  
TEL: +66-2-254-4890  
TEL: +60-3-7958-8355  
TEL: +60-4-2286453  
TEL: +81-75-365-1218  
TEL: +81-45-476-2290

FAX: +86-22-23029183  
FAX: +86-21-6247-2066  
FAX: +86-571-87658071  
FAX: +86-25-8689-0393  
FAX: +86-574-87654208  
FAX: +86-532-5779-653  
FAX: +86-512-6807-2300  
FAX: +86-510-82702992  
FAX: +86-755-8307-3003  
FAX: +86-769-8398-4140  
FAX: +86-591-8801-8690  
FAX: +86-20-3825-5965  
FAX: +86-752-205-1059  
FAX: +86-592-239-8380  
FAX: +86-756-3232-460  
FAX: +852-2-375-8971  
FAX: +886-2-2503-2869  
FAX: +886-7-238-7332  
FAX: +65-6332-5662  
FAX: +63-2-809-1422  
FAX: +66-2-256-6334  
FAX: +60-3-7958-8377  
FAX: +60-4-2286452  
FAX: +81-75-365-1228  
FAX: +81-45-476-2295



### Notes

No copying or reproduction of this document, in part or in whole, is permitted without the consent of ROHM CO.,LTD.

The content specified herein is subject to change for improvement without notice.

The content specified herein is for the purpose of introducing ROHM's products (hereinafter "Products"). If you wish to use any such Product, please be sure to refer to the specifications, which can be obtained from ROHM upon request.

Examples of application circuits, circuit constants and any other information contained herein illustrate the standard usage and operations of the Products. The peripheral conditions must be taken into account when designing circuits for mass production.

Great care was taken in ensuring the accuracy of the information specified in this document. However, should you incur any damage arising from any inaccuracy or misprint of such information, ROHM shall bear no responsibility for such damage.

The technical information specified herein is intended only to show the typical functions of and examples of application circuits for the Products. ROHM does not grant you, explicitly or implicitly, any license to use or exercise intellectual property or other rights held by ROHM and other parties. ROHM shall bear no responsibility whatsoever for any dispute arising from the use of such technical information.

The Products specified in this document are intended to be used with general-use electronic equipment or devices (such as audio visual equipment, office-automation equipment, communication devices, electronic appliances and amusement devices).

The Products are not designed to be radiation tolerant.

While ROHM always makes efforts to enhance the quality and reliability of its Products, a Product may fail or malfunction for a variety of reasons.

Please be sure to implement in your equipment using the Products safety measures to guard against the possibility of physical injury, fire or any other damage caused in the event of the failure of any Product, such as derating, redundancy, fire control and fail-safe designs. ROHM shall bear no responsibility whatsoever for your use of any Product outside of the prescribed scope or not in accordance with the instruction manual.

The Products are not designed or manufactured to be used with any equipment, device or system which requires an extremely high level of reliability the failure or malfunction of which may result in a direct threat to human life or create a risk of human injury (such as a medical instrument, transportation equipment, aerospace machinery, nuclear-reactor controller, fuel-controller or other safety device). ROHM shall bear no responsibility in any way for use of any of the Products for the above special purposes. If a Product is intended to be used for any such special purpose, please contact a ROHM sales representative before purchasing.

If you intend to export or ship overseas any Product or technology specified herein that may be controlled under the Foreign Exchange and the Foreign Trade Law, you will be required to obtain a license or permit under the Law.

Thank you for your accessing to ROHM product informations.

More detail product informations and catalogs are available, please contact your nearest sales office.

**ROHM Customer Support System**

**THE AMERICAS / EUROPE / ASIA / JAPAN**

[www.rohm.com](http://www.rohm.com)

Contact us : [webmaster@rohm.co.jp](mailto:webmaster@rohm.co.jp)