

Ultra-low Profile Tactile Switch with a Thickness of Only 0.47 mm

- Surface-mounting model with dimensions of 4.7 x 4.7 x 0.47 mm allows high-density mounting.
- Contributes to making devices with this Tactile Switch more compact, slim, and lightweight.
- Available on embossed tape that enables automatic mounting.
- Dust-sealed construction provides high reliability.
- Available for reflow soldering.



Ordering Information

■ Model Number Legend

B3B-□00□□

1 2 3

1. **Insulating Tape**
1: None

2. **Operating Force (OF)**
2: 1.58 N {160 gf}
3. **Shipment Package**
P: Embossed tape

■ List of Models

Item	Model
Embossed tape packing (unit: 6,000 pcs.)	B3B-1002P

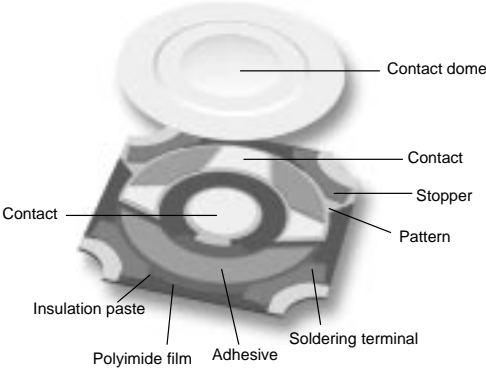
Note: The Switches are available in units of 6,000 pieces. Orders must be made in units of 6,000 pieces.
For details on packing, refer to *Packing Specifications* on page 9.

Specifications

■ Ratings/Characteristics

Switching capacity	1 to 20 mA, 5 to 15 VDC, (resistive load)
Contact configuration	SPST-NO
Contact material	Silver plating
Contact resistance	1 Ω max. (initial value) (rated: 1 mA, 5 VDC)
Insulation resistance	100 MΩ min. (at 100 VDC)
Dielectric strength	250 VAC, 50/60 Hz for 1 min
Bounce time	10 ms max.
Vibration resistance	Malfunction: 10 to 55 Hz, 1.5-mm double amplitude
Shock resistance	Destruction: 735 m/s ² {approx. 75G} max.
Life expectancy	50,000 operations min.
Ambient temperature	Operating: -25°C to 70°C (with no icing)
Ambient humidity	Operating: 25% to 85%
Weight	Approx. 0.01 g max.

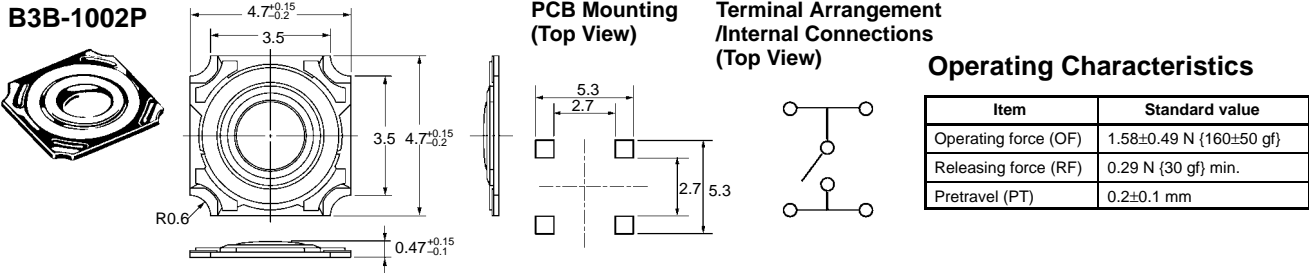
Nomenclature



Dimensions

Note: All units are in millimeters unless otherwise indicated.

B3B-1002P

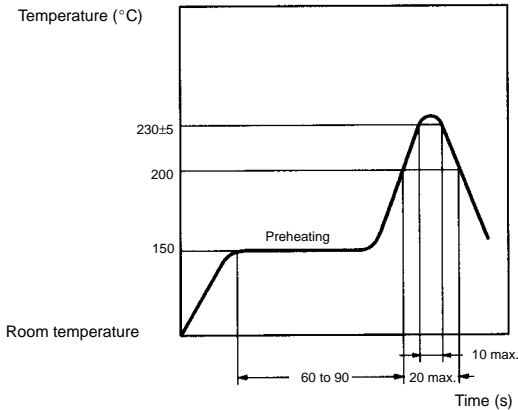


Precautions

Soldering

Soldering Conditions for Reflow Soldering

Carry out soldering within the temperature curve shown in the following illustration.



Note: The above curve is given on condition that the thickness of the PCB is 1.6 mm.

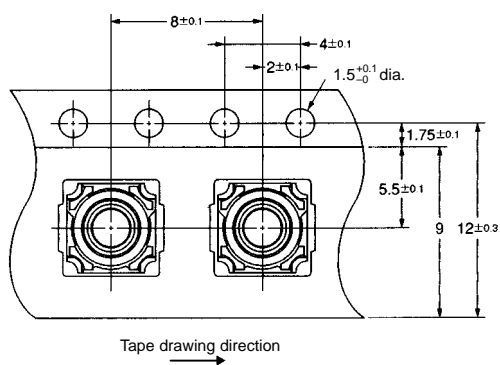
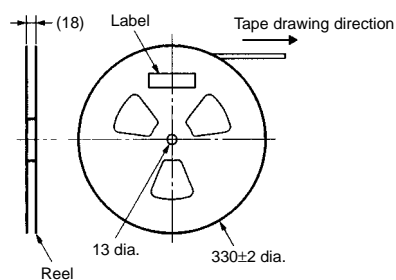
Since the peak value may vary depending on the reflow soldering device, be sure to conduct a verification test in advance.

Washing

No washing is allowed after soldering to prevent detergent or flux from entering into the Switch. Doing so may cause malfunction.

Switch Packing

Package	6,000 Switches
Heat resistance	50°C/24 hours (no deformation)



ALL DIMENSIONS SHOWN ARE IN MILLIMETERS.

To convert millimeters into inches, multiply by 0.03937. To convert grams into ounces, multiply by 0.03527.