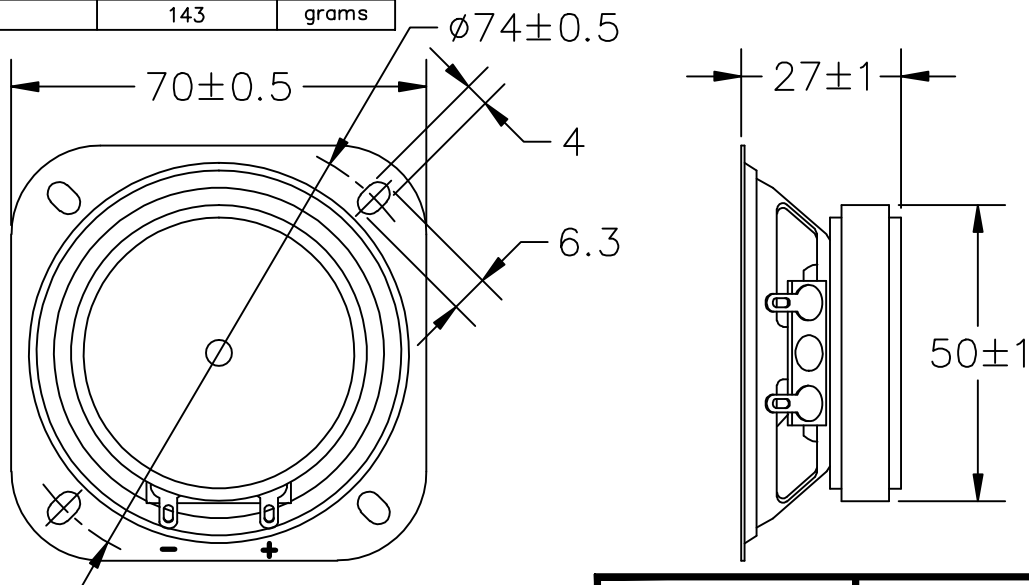


THIS DOCUMENT CONTAINS DATA PROPRIETARY TO PROJECTS UNLIMITED, INC. ANY USE OR REPRODUCTION, IN ANY FORM, WITHOUT PRIOR WRITTEN PERMISSION OF PROJECTS UNLIMITED, INC. IS PROHIBITED.  
© 2003, Projects Unlimited Inc.

## SPECIFICATIONS

PARAMETERS	VALUES	UNITS
RATED INPUT POWER	2	W
MAX INPUT POWER	4	W
IMPEDANCE	8±15%	OHM
OUTPUT SPL @ 1W/1M (AT 0.6, .8, 1.0, 1.2 1.5 kHz)	86±3	dB
DISTORTION (MAX.)	7%	—
RESONANT FREQUENCY	300±20%	Hz
FREQUENCY RANGE	300 ~ 20,000	Hz
HOUSING MATERIAL	METAL	—
CONE MATERIAL	TREATED PAPER	—
MAGNET MATERIAL	FERRITE	—
OPERATING TEMPERATURE	-25 ~ +55	°C
WEIGHT	143	grams



### NOTES:

- ALL DIMENSIONS ARE IN MILLIMETERS.
- SPECIFICATION SUBJECT TO CHANGE OR WITHDRAWAL WITHOUT NOTICE.
- THIS PART IS RoHS 2002/95/EC COMPLIANT.
- CONE HAS BEEN TREATED FOR WATER RESISTANCE.

FILE NAME  
AS07008PS-WR-R.DWG

## REVISIONS

LTR	DESCRIPTION	DATE	APPROVED
—	RELEASED FROM ENGINEERING	9/25/06	

UNLESS OTHERWISE SPECIFIED:  
DIMENSIONS ARE IN  
MILLIMETERS, TOLERANCES ARE  $\pm 0.5$  AND  
ANGLES ARE  $\pm 3^\circ$ .

APPROVALS	DATE
DRAWN <i>J.D.</i>	9/06
CHECKED <i>B.R.</i>	9/06
APPROVED <i>R.W.</i>	9/06

DO NOT SCALE DRAWING



Dayton, Ohio

# SPEAKER

SIZE A  
DRAWING NO. AS07008PS-WR-R

SCALE: N.T.S.

SHEET 1 OF 1