

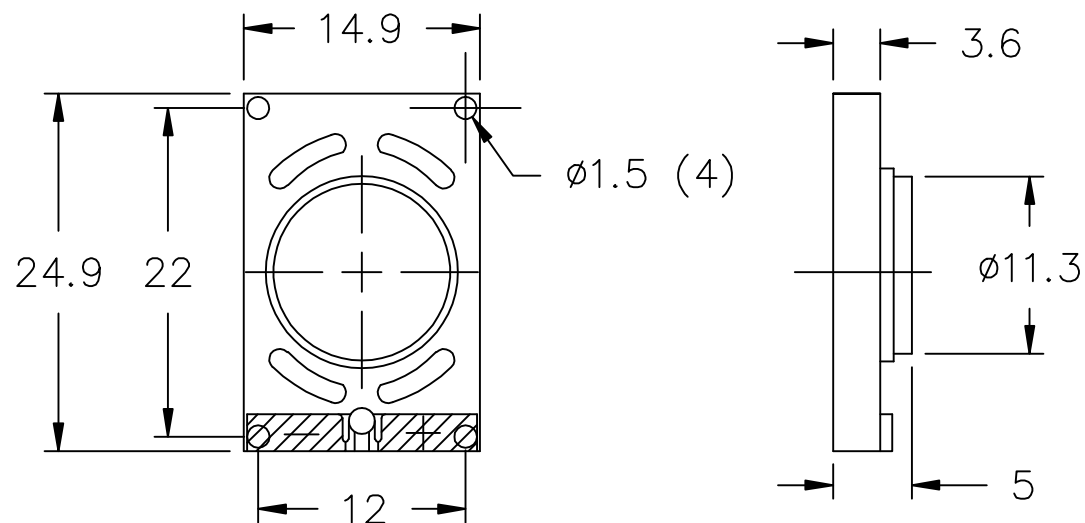
THIS DOCUMENT CONTAINS DATA PROPRIETARY TO PROJECTS UNLIMITED, INC. ANY USE OR REPRODUCTION, IN ANY FORM, WITHOUT PRIOR WRITTEN PERMISSION OF PROJECTS UNLIMITED, INC. IS PROHIBITED.
© 2005, Projects Unlimited Inc.

SPECIFICATIONS

| PARAMETERS | VALUES | UNITS |
|---|---------------|-------|
| RATED INPUT POWER | 0.5 | W |
| MAX INPUT POWER | 1.0 | W |
| IMPEDANCE | 8±20% | OHM |
| OUTPUT SPL @ 0.1W/0.1M (AT 0.8, 1.0, 1.2, 1.5 kHz) | 87±3 | dB A |
| DISTORTION (MAX.) | 5% | — |
| RESONANT FREQUENCY | 900±20% | Hz |
| FREQUENCY RANGE | 900 ~ 20000 | Hz |
| HOUSING MATERIAL | ABS | — |
| CONE MATERIAL | TREATED CLOTH | — |
| MAGNET MATERIAL | NdFeB | — |
| OPERATING TEMPERATURE | -20 ~ +60 | °C |
| WEIGHT | 2.3 | grams |

REVISIONS

| LTR | DESCRIPTION | DATE | APPROVED |
|-----|---------------------------|---------|----------|
| — | RELEASED FROM ENGINEERING | 10/3/06 | |



NOTES:

- ALL DIMENSIONS ARE IN MILLIMETERS.
- SPECIFICATION SUBJECT TO CHANGE OR WITHDRAWAL WITHOUT NOTICE.
- THIS PART IS RoHS 2002/95/EC COMPLIANT.
- CONE HAS BEEN TREATED FOR WATER RESISTANCE.

FILE NAME
AS02508CO-2-WR-R.DWG

UNLESS OTHERWISE SPECIFIED:
DIMENSIONS ARE IN
MILLIMETERS, TOLERANCES ARE ± 0.5 AND
ANGLES ARE $\pm 3^\circ$.

| APPROVALS | DATE |
|---------------|-------|
| DRAWN J.D. | 10/06 |
| CHECKED B.R. | 10/06 |
| APPROVED R.W. | 10/06 |

DO NOT SCALE DRAWING



projects®
unlimited

Dayton, Ohio

SPEAKER

SIZE
A

DRAWING NO.
AS02508CO-2-WR-R

SCALE: N.T.S.

SHEET 1 OF 1