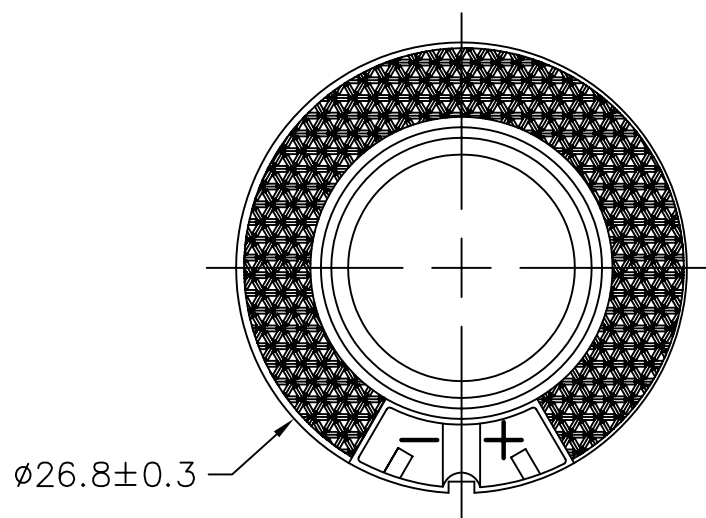


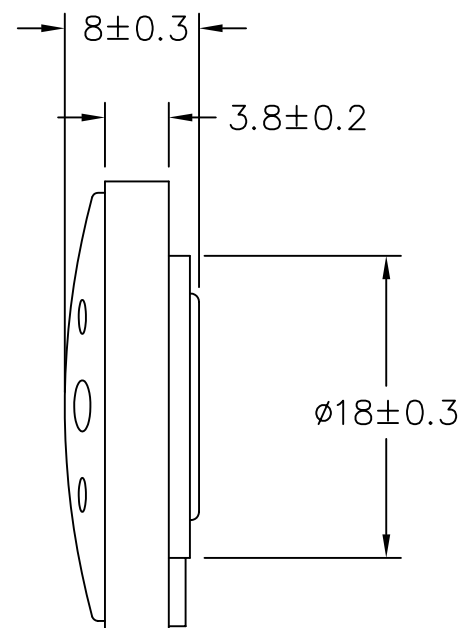
THIS DOCUMENT CONTAINS DATA PROPRIETARY TO PROJECTS UNLIMITED, INC. ANY USE OR REPRODUCTION, IN ANY FORM, WITHOUT PRIOR WRITTEN PERMISSION OF PROJECTS UNLIMITED, INC. IS PROHIBITED.
© 2005, Projects Unlimited Inc.

SPECIFICATIONS

PARAMETERS	VALUES	UNITS
RATED INPUT POWER	.015	W
MAX INPUT POWER	.030	W
IMPEDANCE	150±15%	OHM
OUTPUT SPL @ .001W/1cm (AT 1.0 kHz)	119±3	dBA
DISTORTION (MAX.)	5%	—
RESONANT FREQUENCY	650±20%	Hz
FREQUENCY RANGE	20 ~ 10000	Hz
HOUSING MATERIAL	ABS	—
CONE MATERIAL	MYLAR	—
MAGNET MATERIAL	Nd-Fe-B	—
OPERATING TEMPERATURE	-20 ~ +55	°C
WEIGHT	5.2	grams



REVISIONS			
LTR	DESCRIPTION	DATE	APPROVED
—	RELEASED FROM ENGINEERING	8/29/06	



NOTES:

- ALL DIMENSIONS ARE IN MILLIMETERS.
- SPECIFICATION SUBJECT TO CHANGE OR WITHDRAWAL WITHOUT NOTICE.
- THIS PART IS RoHS 2002/95/EC COMPLIANT.

FILE NAME
AR027150MR-R.DWG

UNLESS OTHERWISE SPECIFIED:
DIMENSIONS ARE IN
MILLIMETERS, TOLERANCES ARE ±0.5 AND
ANGLES ARE ±3°.

APPROVALS	DATE
DRAWN <i>J.D.</i>	8/06
CHECKED <i>B.R.</i>	9/06
APPROVED <i>R.W.</i>	9/06

DO NOT SCALE DRAWING



projects®
unlimited

Dayton , Ohio

RECEIVER

SIZE
A

DRAWING NO.
AR027150MR-R

SCALE: N.T.S.

SHEET 1 OF 1