

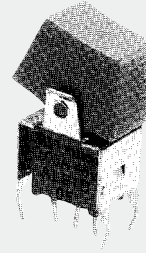
STANDARD LEVER & ROCKER SWITCHES

ALE

FEATURES

- **High Reliability**
Twin-contact clip mechanism is used in the contact section to ensure reliability.
- **Washable Structure**
All switches are of a completely sealed construction.
- **Ideal for Extremely Small Current**
Gold-plated contacts make these switches ideal for use with extremely dry circuit applications.
- **Designed for PC Boards**
Terminal pitches are all in inch size (multiples of 2.54 mm).
- **Quality Touch**
Independent detent construction provides a light operating touch.
- **UL approved.**

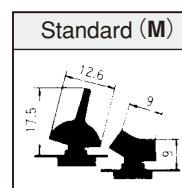
RoHS compliant



SPECIFICATIONS

Rating	Max : 50mA 48VAC/DC Min : 1μA 20mVAC/DC
Initial contact resistance	50mΩ max. (1.5mA 200 μVAC)
Dielectric strength	250VAC 1 minute
Insulation resistance	500MΩ min (250VDC)
Electrical life	10,000 cycles at maximum rating. 50,000 cycles at 0.4VA max. (D type)
Operating temperature range	−20~+85°C
Storage temperature range	−40~+85°C

ACTUATOR SHAPE



PART NUMBERING

A		LE		2		D		—		2		M		4		—		10		—		Z	
Series code		Structure		Number of poles		Switching function		Terminal style		Actuator shape		Bushing style		Clip mechanism									
Code	Type	Fig.	Number of poles	Code	Switching function	Fig.	Terminal style	Code	Actuator shape	Fig.	Bushing style												
LE	Lever and rocker type	1	1 pole	D	ON — ON	2	PC terminal	M	Standard	4	With bracket												
		2	2 poles																				

TABLE OF PART NUMBERS

Number of poles	Terminal style	Switching function	Part No.
1 pole	PC terminal	ON - ON	ALE1D-2M4-10-Z
2 poles	PC terminal	ON - ON	ALE2D-2M4-10-Z

※ Please contact us if you can't find your preferable combination in the table of part numbers.

ALE

STANDARD LEVER & ROCKER SWITCHES

OUTLINE DIMENSIONS

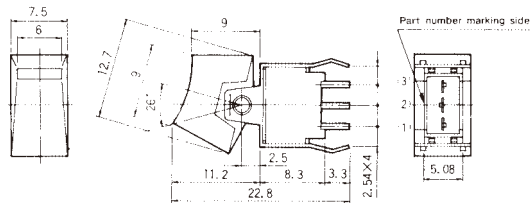
SPDT

PC



Mount with **rocker**

Compact type



Terminal number not shown on box.

Switching function	Viewed from part No. marking side		
Part No.			
Connecting terminals	2—3	—	2—1

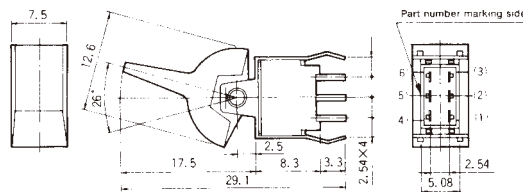
DPDT

PC



Mount with **lever**

Compact type



Terminal number not shown on box.

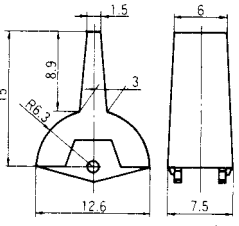
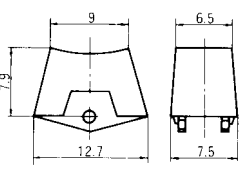
Switching function	Viewed from part No. marking side		
Part No.			
Connecting terminals	2—3 5—6	—	2—1 5—4

★ : Made-to-order items.

ALE

STANDARD LEVER & ROCKER SWITCHES

STANDARD ACCESSORIES

Lever			Rocker		
Dimension	Color	Part No.	Dimension	Color	Part No.
Gloss finish 	White	14000050624	Gloss finish 	White	140000480673
	Red	14000050626		Red	140000480675
	Black	14000050625		Black	140000480674
	Gray	14000050630		Gray	140000480679
	Green	14000050628		Green	140000480677
	Blue	14000050629		Blue	140000480678
	Orange	14000050632		Orange	140000480680
	Yellow	14000050627		Yellow	140000480676
	Brown	14000050647		Brown	140000480693

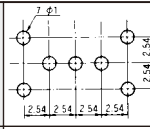
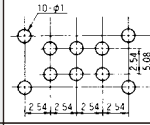
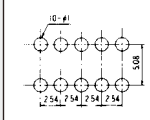
Lever or rocker is included. Indicate with the number on the parts diagram.

LEVER · ROCKER INSTALLATION PROCEDURE



Install the lever or rocker after cleaning

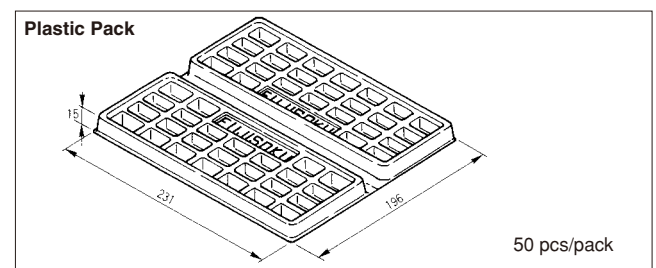
PC HOLE LAYOUTS

PC terminal	1—pole Compact type	
	2—pole Compact type	
	2—pole 5.08mm Two terminal rows	

SOLDERING

- (1) Hand soldering
Device : Solder iron
380 °C Max. 3 sec. Max.
- (2) Auto soldering
Device : Wave or Dip type
275 °C Max. 6 sec. Max.
● Preheat should be within 80-120 °C, 120sec.

PACKAGING SPECIFICATION



FLUX CLEANING

- (1) Solvent : Fluorine or Alcohol type.
- (2) Cleaning shall be made when terminal temperature fall to 90 °C or lower. Or, leave the switch at normal temperature for 5 minutes or longer, before cleaning.