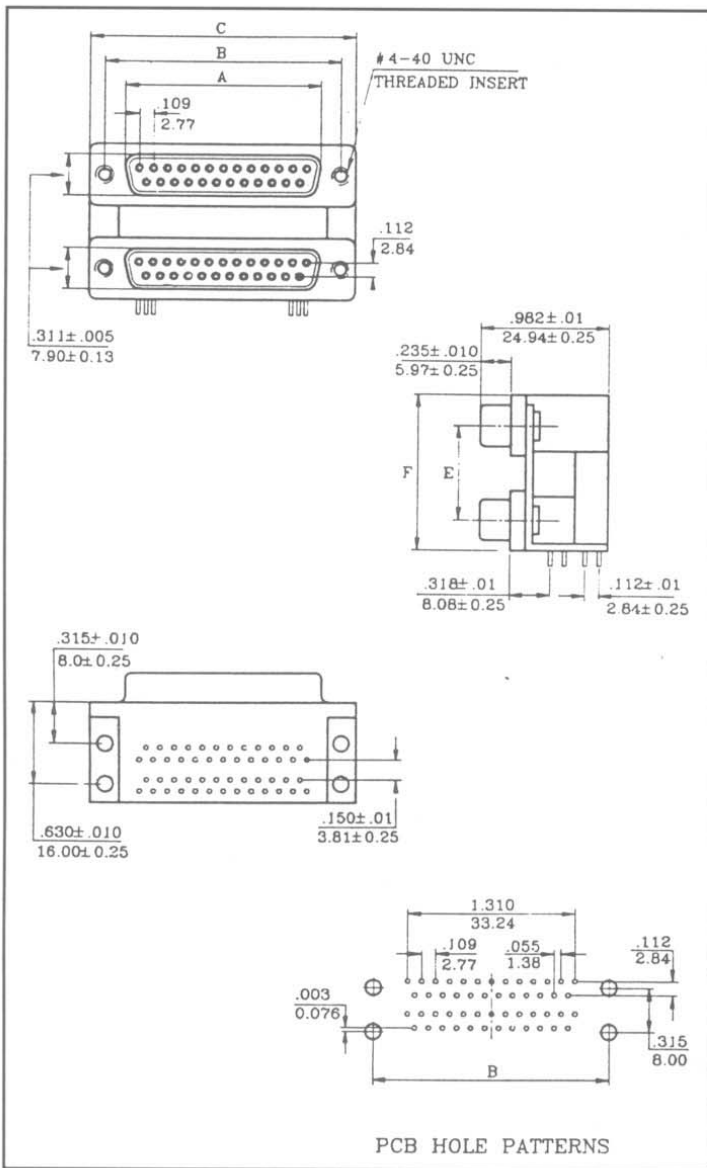


# D-SUBMINIATURE CONNECTOR DUAL-PORT STACKED (STAMPED)



## FEATURES AND OPTIONS

- Available in 9, 15 and 25 positions
- Connector arrangements available: male/male, male/female, female/male, female/female
- Available with spacing of .625", .750" or .900"
- Hardware options include: threaded inserts, hex stand-offs, board locks and grounding straps
- Gold plated contacts
- Tin plated shell

## SPECIFICATIONS

### MATERIALS

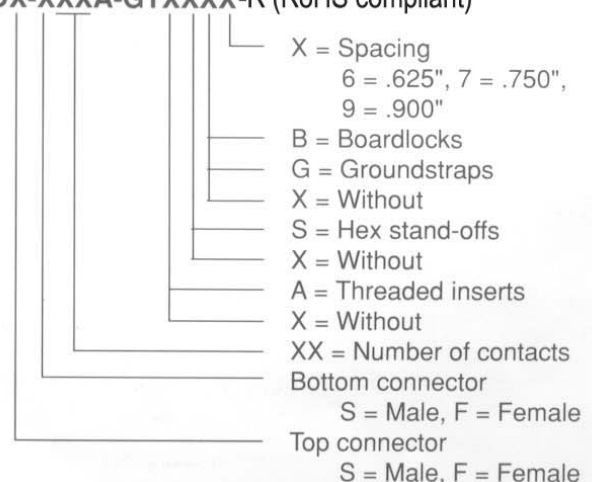
Shell: Tin plated steel  
 Insulator: PBT thermo plastic, black color, 30% glass filled self-extinguishing, UL94V-0 rated  
 Contact material: Pin: Brass  
 Socket: Phosphor Bronze  
 Contact plating: Gold over nickel

### ELECTRICAL

Current rating: 5.0 Amps  
 Dielectric strength: 1000Vac min.  
 Insulation resistance: 5000M ohm min.  
 Operating temperature range: -55°C~ to +125°C

## HOW TO ORDER

### ADX-XXXA-GTXXXX-R (RoHS compliant)



## DIMENSIONS

# of pins	A	B	C	E	F
9	16.33 0.643	24.99 0.984	30.81 1.213	19.05 0.75	31.60 1.244
15	24.66 0.971	33.32 1.312	39.14 1.541	22.86 0.90	35.41 1.394
25	38.38 1.511	47.04 1.852	53.04 2.088	15.88 0.625	28.42 1.119