

3-terminal Filters(SMD) For Power Line

Conformity to RoHS Directive

ACH Series ACH3218, 4518 Types

FEATURES

- The ACH series consists of products with superior attenuation characteristics, in which the T-type filter circuit is magnetically shielded with ferrite.
- The series offers even greater attenuation characteristics when used in a stable circuit on the ground.
- The ACH series is ideal for high-density circuit design, since the series is vertically mounted and does not require much mounting space.
- Available for reflow soldering.
- It is a product conforming to RoHS directive.

PRODUCT IDENTIFICATION

ACH	3218	-	223	-	T	D□□
(1)	(2)	(3)	(4)	(5)		

- (1) Series name
 (2) Dimensions
 (3) Type
 (4) Packaging style
 (5) TDK internal code

TEMPERATURE RANGES

Operating/Storage	-40 to +125°C
-------------------	---------------

PACKAGING STYLE AND QUANTITIES

Packaging style	Quantity
Taping	1000 pieces/reel

HANDLING AND PRECAUTIONS

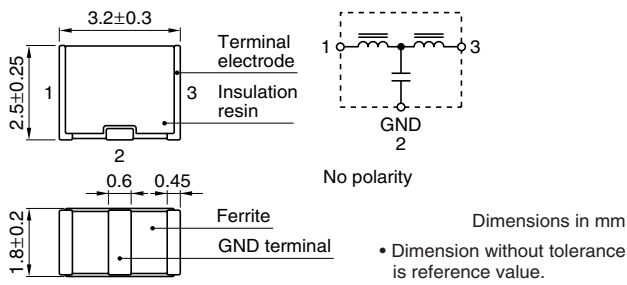
- Before soldering, be sure to preheat components. The preheating temperature should be set so that the temperature difference between the solder temperature and product temperature does not exceed 150°C.
- After mounting components onto the printed circuit board, do not apply stress through board bending or mishandling.
- The inductance value may change due to magnetic saturation if the current exceeds the rated maximum.
- Do not expose the inductors to stray magnetic fields.
- Avoid static electricity discharge during handling.
- When hand soldering, apply the soldering iron to the printed circuit board only. Temperature of the iron tip should not exceed 350°C. Soldering time should not exceed 3 seconds.

- Conformity to RoHS Directive: This means that, in conformity with EU Directive 2002/95/EC, lead, cadmium, mercury, hexavalent chromium, and specific bromine-based flame retardants, PBB and PBDE, have not been used, except for exempted applications.

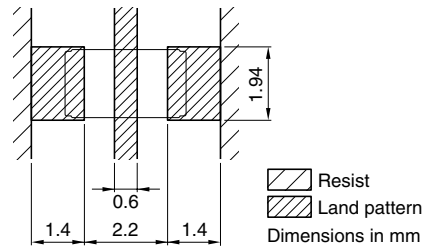
- Please contact our Sales office when your application are considered the following:
 The device's failure or malfunction may directly endanger human life (e.g. application for automobile/aircraft/medical/nuclear power devices, etc.)

- All specifications are subject to change without notice.

ACH3218 TYPE SHAPES AND DIMENSIONS/CIRCUIT DIAGRAM



RECOMMENDED PC BOARD PATTERN REFLOW SOLDERING

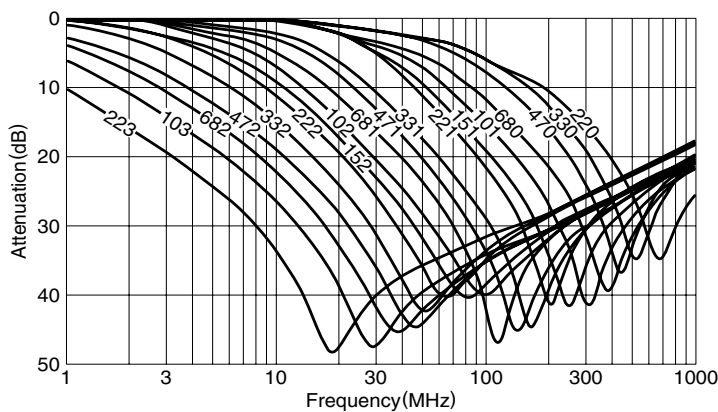


ELECTRICAL CHARACTERISTICS

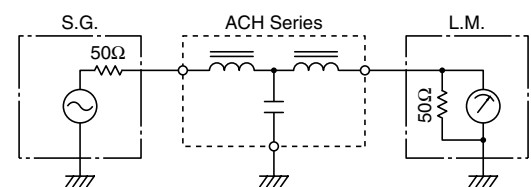
Part No.	25dB attenuation frequency range (MHz)	Rated voltage E _{dc} (V)max.	Rated current (A)max.	DC resistance (Ω)max. [Terminal No.1 to 3]	Insulation resistance (MΩ)min. [Terminal No.1 to 2/No.2 to 3]
ACH3218-223	11 to 55	20	1.5	0.06	1000
ACH3218-103	17 to 60	20	1.5	0.06	1000
ACH3218-682	22 to 75	20	1.5	0.06	1000
ACH3218-472	30 to 85	20	1.5	0.06	1000
ACH3218-332	37 to 90	20	1.5	0.06	1000
ACH3218-222	45 to 105	20	1.5	0.06	1000
ACH3218-152	60 to 115	20	1.5	0.06	1000
ACH3218-102	80 to 140	20	1.5	0.06	1000
ACH3218-681	95 to 150	20	1.5	0.06	1000
ACH3218-471	120 to 180	20	1.5	0.06	1000
ACH3218-331	130 to 210	20	1.5	0.06	1000
ACH3218-221	170 to 250	20	1.5	0.06	1000
ACH3218-151	205 to 280	20	1.5	0.06	1000
ACH3218-101	265 to 340	20	1.5	0.06	1000
ACH3218-680	340 to 420	20	1.5	0.06	1000
ACH3218-470	420 to 500	20	1.5	0.06	1000
ACH3218-330	500 to 600	20	1.5	0.06	1000
ACH3218-220	600 to 700	20	1.5	0.06	1000

TYPICAL ELECTRICAL CHARACTERISTICS

ATTENUATION vs. FREQUENCY CHARACTERISTICS

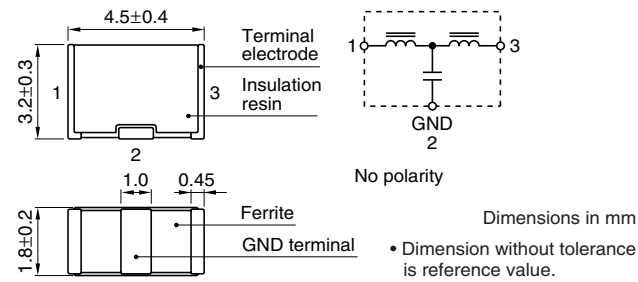


MEASURING CIRCUIT

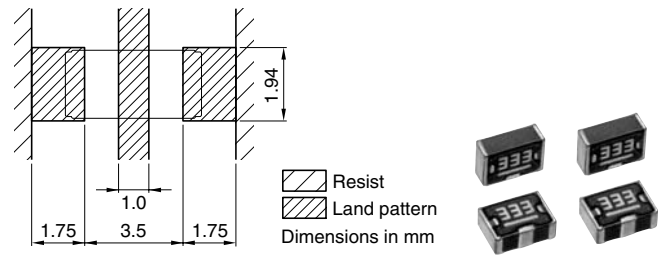


ACH4518 TYPE

SHAPES AND DIMENSIONS/CIRCUIT DIAGRAM



RECOMMENDED PC BOARD PATTERN REFLOW SOLDERING

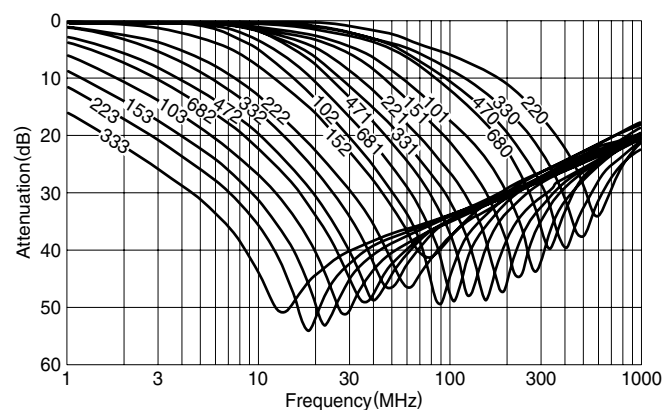


ELECTRICAL CHARACTERISTICS

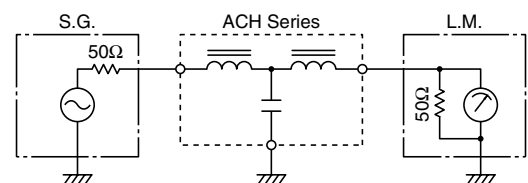
Part No.	25dB attenuation frequency range (MHz)	Rated voltage Edc (V)max.	Rated current (A)max.	DC resistance (Ω)max. [Terminal No.1 to 3]	Insulation resistance (MΩ)min. [Terminal No.1 to 2/No.2 to 3]
ACH4518-333	6 to 60	50	2	0.04	1000
ACH4518-223	9 to 65	50	2	0.04	1000
ACH4518-153	11 to 70	50	2	0.04	1000
ACH4518-103	15 to 75	50	2	0.04	1000
ACH4518-682	20 to 85	50	2	0.04	1000
ACH4518-472	25 to 90	50	2	0.04	1000
ACH4518-332	35 to 100	50	2	0.04	1000
ACH4518-222	40 to 110	50	2	0.04	1000
ACH4518-152	50 to 130	50	2	0.04	1000
ACH4518-102	65 to 150	50	2	0.04	1000
ACH4518-681	75 to 160	50	2	0.04	1000
ACH4518-471	95 to 180	50	2	0.04	1000
ACH4518-331	115 to 205	50	2	0.04	1000
ACH4518-221	150 to 250	50	2	0.04	1000
ACH4518-151	190 to 290	50	2	0.04	1000
ACH4518-101	235 to 335	50	2	0.04	1000
ACH4518-680	290 to 395	50	2	0.04	1000
ACH4518-470	360 to 460	50	2	0.04	1000
ACH4518-330	450 to 550	50	2	0.04	1000
ACH4518-220	530 to 650	50	2	0.04	1000

TYPICAL ELECTRICAL CHARACTERISTICS

ATTENUATION vs. FREQUENCY CHARACTERISTICS



MEASURING CIRCUIT



Technical drawing of a circular component, showing a top view and a side view. The top view includes dimensions: 1.0 (flange thickness), 2.0±0.5 (spoke width), 13±0.5 (central hole diameter), 21±0.8 (inner diameter), and 178±2.0 (outer diameter). The side view includes dimensions: 13.0±0.3 (flange thickness), 17.0±1.4 (total height), and 60±2.0 (central hole diameter). The text "Dimensions in mm" is present at the bottom right.

Type	A	B	C	D	T
321825	2.2±0.2	3.7±0.2	4.0±0.1	2.0±0.05	3.3max.
451832	2.2±0.2	5.2±0.2	4.0±0.1	2.0±0.05	3.8max.

