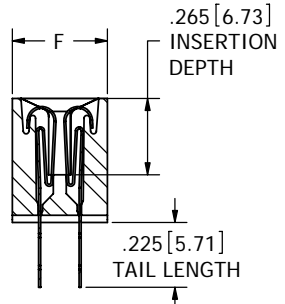
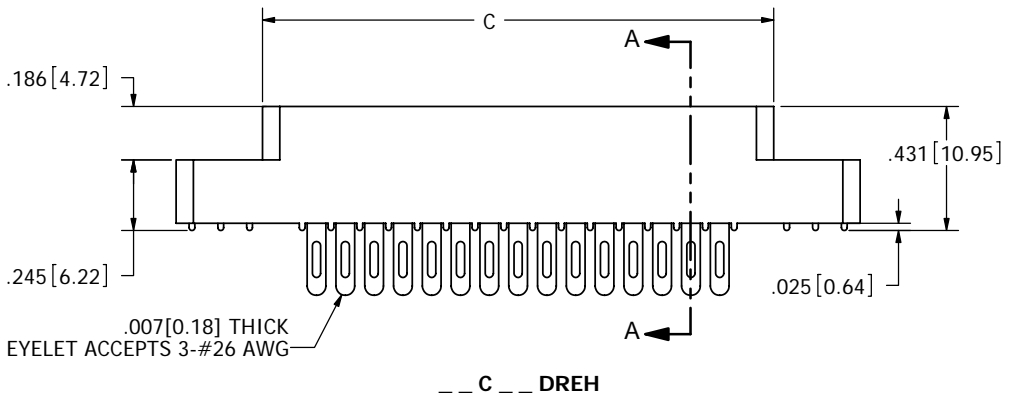
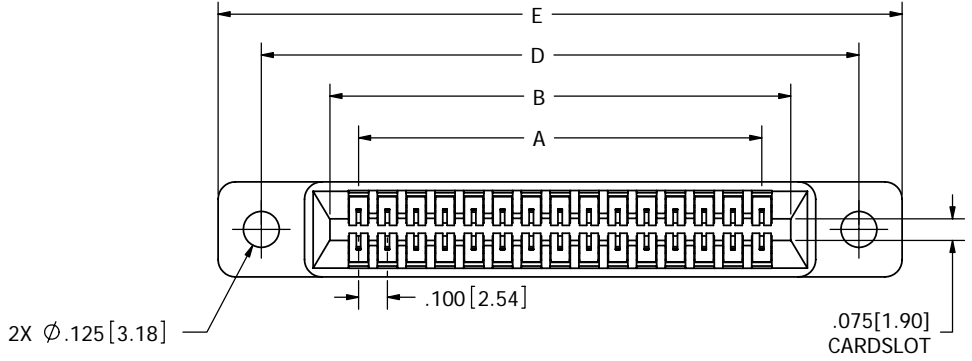
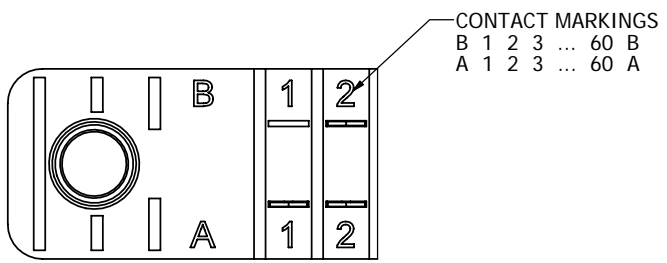


| REVISIONS | | | | |
|-----------|---------|-----------------|-----------|----|
| REV. | ECO. NO | DESCRIPTION | DATE | BY |
| A | 1244 | INITIAL RELEASE | 1/15/2007 | MV |



SECTION A - A



CONTACT ID SCALE 2:1

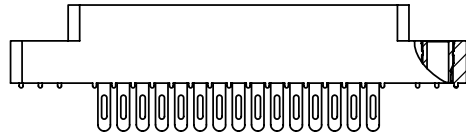
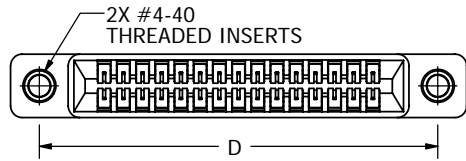
- NOTES:
1. INSULATOR MATERIAL: SEE PART NUMBER CODING
 2. CONTACT MATERIAL: SEE PART NUMBER CODING
 3. PLATING: SEE PART NUMBER CODING
 4. OPERATING TEMPERATURE: SEE PART NUMBER CODING
 5. PROCESSING TEMP: SEE PART NUMBER CODING
 6. UL FLAMMABILITY RATING: 94V-0
 7. VOLTAGE RATING: 600 VDC MINIMUM AT SEA LEVEL.
 8. CURRENT RATING: 3 AMP PER CONTACT PAIR
 9. VOLTAGE DROP: 30 MILLI VOLT AT RATED CURRENT
 10. INSULATION RESISTANCE: 5000 MEGA OHM
 11. CONNECTOR IDENTIFICATION: THE PART SHALL BE MARKED WITH A PART NUMBER AND BARCODE
 12. BOARD THICKNESS ACCOMMODATED: .062 ± .008"
 13. BOARD INSERTION FORCE: 16 OZ MAX PER CONTACT PAIR WHEN USING A .062" TEST BLADE. INTERNAL INSPECTION TO BE PER SULLIN'S WORK INSTRUCTION W17.3-01.
 14. BOARD WITHDRAWAL FORCE: 1 OUNCE MINIMUM PER CONTACT PAIR USING .062" PCB



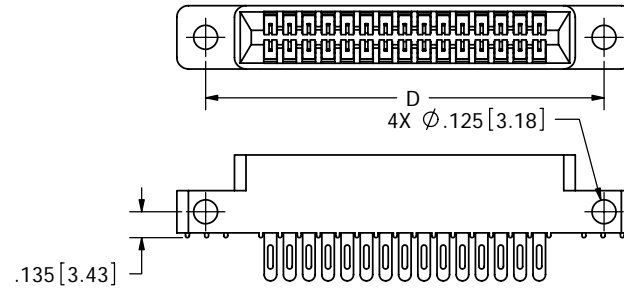
RoHS COMPLIANT

CUSTOMER COPY

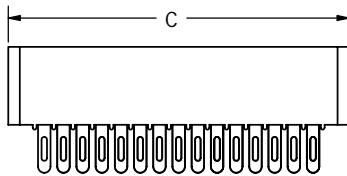
| | | | |
|-----------------------------------------------------------------------------------------------------------------------------------------------------------|---------------|--------------------------------------------------------------------------------------------------------------------------------------------------------------------------------------------------------------------------------------------|------|
| UNLESS OTHERWISE SPECIFIED: DIMENSIONS ARE IN INCHES[MM] | | DATE | NAME |
| TOLERANCES: ANGULAR: ± 1° XX = ± .02 [.508] .XXX = ± .005 [.1270] XXXX = ± .0005 [.0127] PARENTHEICAL INFORMATION IS FOR REFERENCE ONLY | | DRAWN | MV |
| INTERPRET DIMENSIONS AND GEOMETRIC TOLERANCING PER: ANSI Y14.5-1984 | | THE INFORMATION HEREIN CONTAINS PROPRIETARY INFORMATION OF SULLINS ELECTRONICS AND IS NOT TO BE REPRODUCED, USED OR DISCLOSED TO OTHERS FOR ANY PURPOSE EXCEPT AS SPECIFICALLY AUTHORIZED IN WRITING BY AN OFFICER OF SULLINS ELECTRONICS. | |
| | | SULLINS ELECTRONICS DESCRIPTION: EDGE CARD, .100 CC LP PART NUMBER: __C__DRE__ | |
| SIZE | DWG. NO | REV | |
| C | C10870 | A | |
| SCALE: 2:1 | | SHEET 1 OF 3 | |



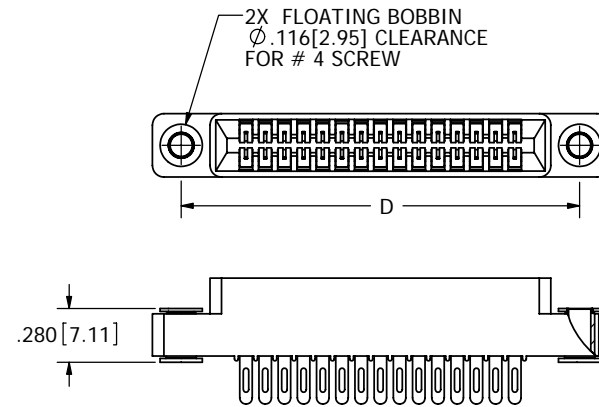
__ C __ DREI



__ C __ DRES



__ C __ DREN



__ C __ DREF

CUSTOMER COPY



RoHS COMPLIANT

| | | | |
|------------------------------------------------------------------------------------------------------------------------------------------------------------|--|--------------------------------------------------------------------------------------------------------------------------------------------------------------------------------------------------------------------------------------------|------|
| UNLESS OTHERWISE SPECIFIED: DIMENSIONS ARE IN INCHES[MM] | | DATE | NAME |
| TOLERANCES: ANGULAR: ± 1° XX = ± .02 [.508] .XXX = ± .005 [.1270] .XXXX = ± .0005 [.0127] PARENTHEICAL INFORMATION IS FOR REFERENCE ONLY | | DRAWN | MV |
| INTERPRET DIMENSIONS AND GEOMETRIC TOLERANCING PER: ANSI Y14.5-1984 | | THE INFORMATION HEREIN CONTAINS PROPRIETARY INFORMATION OF SULLINS ELECTRONICS AND IS NOT TO BE REPRODUCED, USED OR DISCLOSED TO OTHERS FOR ANY PURPOSE EXCEPT AS SPECIFICALLY AUTHORIZED IN WRITING BY AN OFFICER OF SULLINS ELECTRONICS. | |
| SIZE | | DESCRIPTION | |
| C | | EDGE CARD, .100 CC LP | |
| DWG. NO. | | PART NUMBER | |
| C10870 | | __ C __ DRE | |
| REV | | SCALE: 2:1 | |
| A | | SHEET 2 OF 3 | |

| PART NUMBER | NO. OF POS. | A±.008[0.20] | | B±.008[0.20] | | C±.015[0.38] | | D±.010[0.25] | | E±.020[0.51] | | F±.005[0.13] | |
|-------------|-------------|--------------|--------|--------------|--------|--------------|--------|--------------|--------|--------------|--------|--------------|------|
| | | IN | MM | IN | MM | IN | MM | IN | MM | IN | MM | IN | MM |
| C04DRE | 4 | 0.300 | 7.62 | 0.500 | 12.70 | 0.675 | 17.15 | 0.975 | 24.77 | 1.275 | 32.39 | 0.330 | 8.38 |
| C05DRE | 5 | 0.400 | 10.16 | 0.600 | 15.24 | 0.775 | 19.69 | 1.075 | 27.31 | 1.375 | 34.93 | | |
| C06DRE | 6 | 0.500 | 12.70 | 0.700 | 17.78 | 0.875 | 22.23 | 1.175 | 29.85 | 1.475 | 37.47 | | |
| C07DRE | 7 | 0.600 | 15.24 | 0.800 | 20.32 | 0.975 | 24.77 | 1.275 | 32.39 | 1.575 | 40.01 | | |
| C08DRE | 8 | 0.700 | 17.78 | 0.900 | 22.86 | 1.075 | 27.31 | 1.375 | 34.93 | 1.675 | 42.55 | | |
| C10DRE | 10 | 0.900 | 22.86 | 1.100 | 27.94 | 1.275 | 32.39 | 1.575 | 40.01 | 1.875 | 47.63 | | |
| C12DRE | 12 | 1.100 | 27.94 | 1.300 | 33.02 | 1.475 | 37.47 | 1.775 | 45.09 | 2.075 | 52.71 | | |
| C13DRE | 13 | 1.200 | 30.48 | 1.400 | 35.56 | 1.575 | 40.01 | 1.875 | 47.63 | 2.175 | 55.25 | | |
| C15DRE | 15 | 1.400 | 35.56 | 1.600 | 40.64 | 1.775 | 45.09 | 2.075 | 52.71 | 2.375 | 60.33 | | |
| C17DRE | 17 | 1.600 | 40.64 | 1.800 | 45.72 | 1.975 | 50.17 | 2.275 | 57.79 | 2.575 | 65.41 | | |
| C18DRE | 18 | 1.700 | 43.18 | 1.900 | 48.26 | 2.075 | 52.71 | 2.375 | 60.33 | 2.675 | 67.95 | | |
| C19DRE | 19 | 1.800 | 45.72 | 2.000 | 50.80 | 2.175 | 55.25 | 2.475 | 62.87 | 2.775 | 70.49 | | |
| C20DRE | 20 | 1.900 | 48.26 | 2.100 | 53.34 | 2.275 | 57.79 | 2.575 | 65.41 | 2.875 | 73.03 | | |
| C22DRE | 22 | 2.100 | 53.34 | 2.300 | 58.42 | 2.475 | 62.87 | 2.775 | 70.49 | 3.075 | 78.11 | | |
| C23DRE | 23 | 2.200 | 55.88 | 2.400 | 60.96 | 2.575 | 65.41 | 2.875 | 73.03 | 3.175 | 80.65 | | |
| C25DRE | 25 | 2.400 | 60.96 | 2.600 | 66.04 | 2.775 | 70.49 | 3.075 | 78.11 | 3.375 | 85.73 | | |
| C26DRE | 26 | 2.500 | 63.50 | 2.700 | 68.58 | 2.875 | 73.03 | 3.175 | 80.65 | 3.475 | 88.27 | | |
| C28DRE | 28 | 2.700 | 68.58 | 2.900 | 73.66 | 3.075 | 78.11 | 3.375 | 85.73 | 3.675 | 93.35 | | |
| C30DRE | 30 | 2.900 | 73.66 | 3.100 | 78.74 | 3.275 | 83.19 | 3.575 | 90.81 | 3.875 | 98.43 | | |
| C31DRE | 31 | 3.000 | 76.20 | 3.200 | 81.28 | 3.375 | 85.73 | 3.675 | 93.35 | 3.975 | 100.97 | | |
| C35DRE | 35 | 3.400 | 86.36 | 3.600 | 91.44 | 3.775 | 95.89 | 4.075 | 103.51 | 4.375 | 111.13 | | |
| C36DRE | 36 | 3.500 | 88.90 | 3.700 | 93.98 | 3.875 | 98.43 | 4.175 | 106.05 | 4.475 | 113.67 | | |
| C40DRE | 40 | 3.900 | 99.06 | 4.100 | 104.14 | 4.275 | 108.59 | 4.575 | 116.21 | 4.875 | 123.83 | | |
| C43DRE | 43 | 4.200 | 106.68 | 4.400 | 111.76 | 4.575 | 116.21 | 4.875 | 123.83 | 5.175 | 131.45 | | |
| C44DRE | 44 | 4.300 | 109.22 | 4.500 | 114.30 | 4.675 | 118.75 | 4.975 | 126.37 | 5.275 | 133.99 | | |
| C49DRE | 49 | 4.800 | 121.92 | 5.000 | 127.00 | 5.175 | 131.45 | 5.475 | 139.07 | 5.775 | 146.69 | | |
| C50DRE | 50 | 4.900 | 124.46 | 5.100 | 129.54 | 5.275 | 133.99 | 5.575 | 141.61 | 5.875 | 149.23 | | |
| C52DRE | 52 | 5.100 | 129.54 | 5.300 | 134.62 | 5.475 | 139.07 | 5.775 | 146.69 | 6.075 | 154.31 | | |
| C60DRE | 60 | 5.900 | 149.86 | 6.100 | 154.94 | 6.275 | 159.39 | 6.575 | 167.01 | 6.875 | 174.63 | | |
| C65DRE | 65 | 6.400 | 162.56 | 6.600 | 167.64 | 6.775 | 172.09 | 7.075 | 179.71 | 7.375 | 187.33 | | |

* CONSULT FACTORY FOR AVAILABILITY

PART NUMBER CODING

MATERIAL (INSULATOR/CONTACT)

E = PBT/PHOSPHOR BRONZE

OPERATING TEMP: -65°C TO +125°C
PROCESSING TEMP: 260°C FOR 10 SECS MAX

R = PPS/PHOSPHOR BRONZE

OPERATING TEMP: -65°C TO +125°C
PROCESSING TEMP: 260°C FOR 120 SECS MAX

G = PA9T/PHOSPHOR BRONZE

OPERATING TEMP: -65°C TO +125°C
PROCESSING TEMP: 260°C FOR 120 SECS MAX

H = PBT/BERYLLIUM COPPER

OPERATING TEMP: -65°C TO +125°C
PROCESSING TEMP: 260°C FOR 10 SECS MAX

A = PPS/BERYLLIUM COPPER

OPERATING TEMP: -65°C TO +150°C
PROCESSING TEMP: 260°C FOR 120 SECS MAX

J = PA9T/BERYLLIUM COPPER

OPERATING TEMP: -65°C TO +150°C
PROCESSING TEMP: 260°C FOR 120 SECS MAX

F = PPS/SPINODAL (CONSULT FACTORY)

OPERATING TEMP: -65°C TO +200°C
PROCESSING TEMP: 260°C FOR 120 SECS MAX
AVAILABLE IN OVERALL GOLD ONLY (S OR M PLATING CODE)

C = PPS/BERYLLIUM NICKEL (CONSULT FACTORY)

OPERATING TEMP: -65°C TO +200°C
PROCESSING TEMP: 260°C FOR 120 SECS MAX
AVAILABLE IN OVERALL GOLD ONLY (S OR M PLATING CODE)

W = PEEK/BERYLLIUM NICKEL (CONSULT FACTORY)

OPERATING TEMP: -65°C TO +250°C
AVAILABLE IN OVERALL GOLD ONLY (S OR M PLATING CODE)

C **DRE**

NUMBER OF POSITIONS (CONTACTS PER ROW)

PLATING

ALL PLATINGS HAVE .000050" NICKEL UNDERPLATE

CONTACT SURFACE

G = .000010" GOLD

Y = .000030" GOLD

B = .000010" GOLD

C = .000030" GOLD

**E = .000100" PURE TIN, MATTE, OVERALL

S = .000010" GOLD OVERALL

M = .000030" GOLD

** OVERALL TIN ONLY AVAILABLE ON MATERIAL CODES E, R AND G

ALL PLATINGS ARE LEAD FREE

MOUNTING STYLE

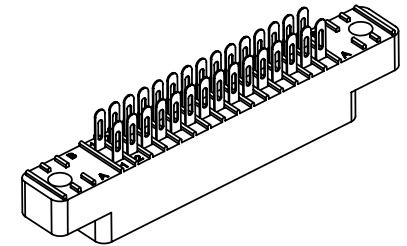
H = .125" DIA. CLEARANCE HOLES (PAGE 1)

I = #4-40 THREADED INSERT (PAGE 2)

S = .125" DIA. SIDE MOUNTING (PAGE 2)

N = NO MOUNTING EARS (PAGE 2)

F = FLOATING BOBBIN (PAGE 2)



RoHS COMPLIANT

CUSTOMER COPY

| | | | |
|--------------------------------------------------------------------------------------------------------------------------------------------------------------------------------------------------------------------------------------------|--------------------|--------------------------------------|--------------------------|
| UNLESS OTHERWISE SPECIFIED: DIMENSIONS ARE IN INCHES[MM] | | DATE | NAME |
| TOLERANCES: ANGULAR: ± 1° XX = ± .02 [.508] .XXX = ± .005 [.1270] XXXX = ± .0005 [.0127] PARENTHEICAL INFORMATION IS FOR REFERENCE ONLY | | DRAWN | MV |
| THE INFORMATION HEREIN CONTAINS PROPRIETARY INFORMATION OF SULLINS ELECTRONICS AND IS NOT TO BE REPRODUCED, USED OR DISCLOSED TO OTHERS FOR ANY PURPOSE EXCEPT AS SPECIFICALLY AUTHORIZED IN WRITING BY AN OFFICER OF SULLINS ELECTRONICS. | | | |
| INTERPRET DIMENSIONS AND GEOMETRIC TOLERANCING PER: ANSI Y14.5-1984 | | DESCRIPTION EDGE CARD, .100 CC LP | PART NUMBER - C - DRE |
| SIZE C | DWG. NO. C10870 | REV A | SCALE: 2:1 |
| | | SHEET 3 OF 3 | |