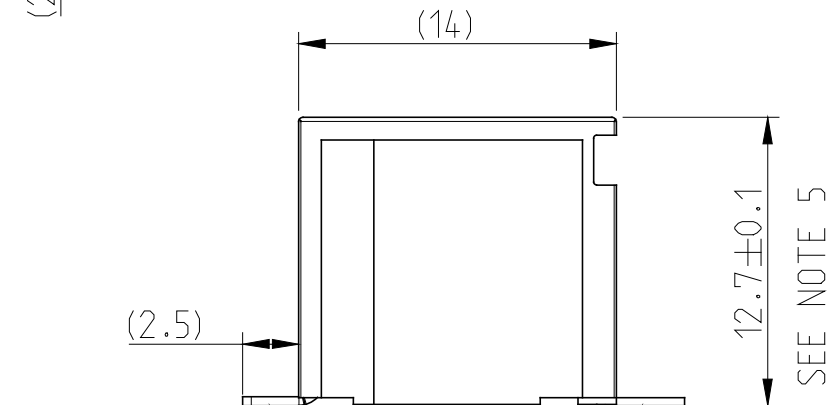
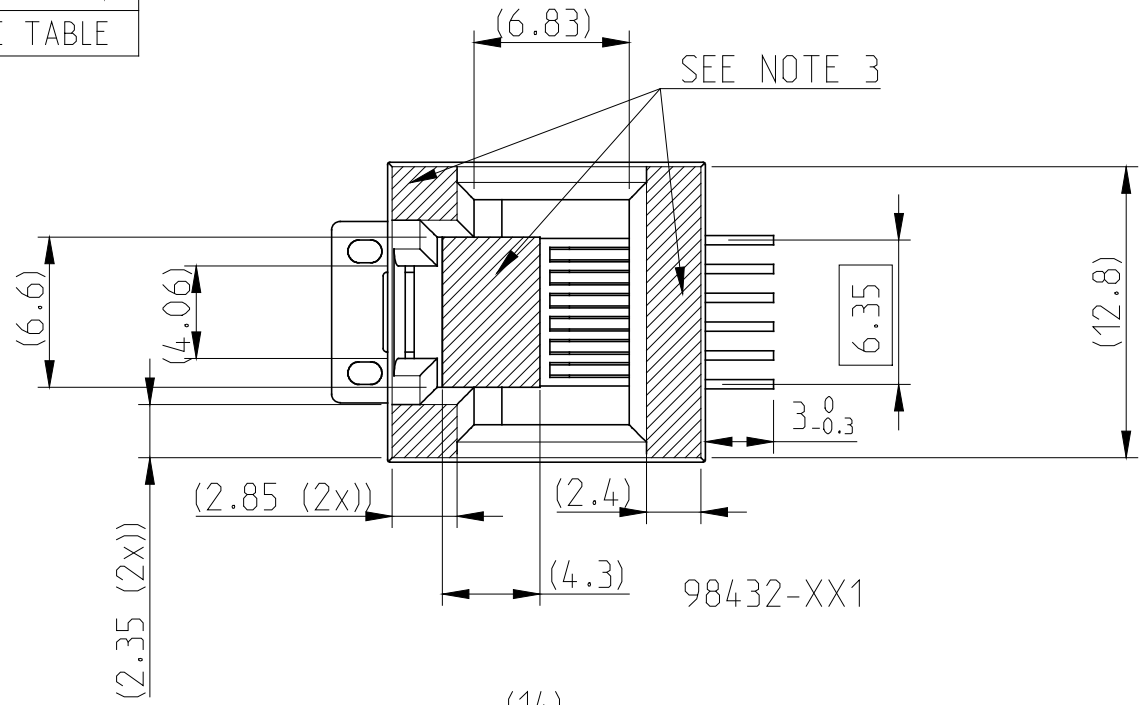
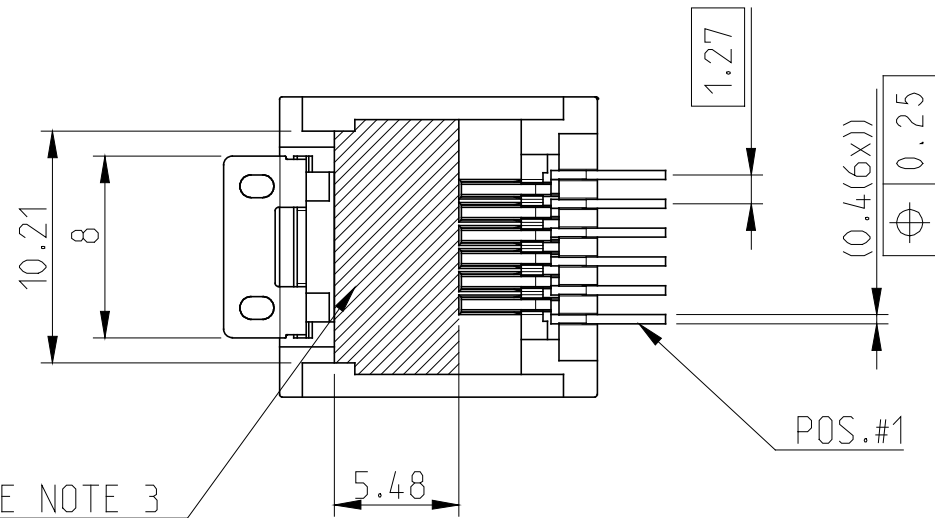


PRODUCT N°
SEE TABLE

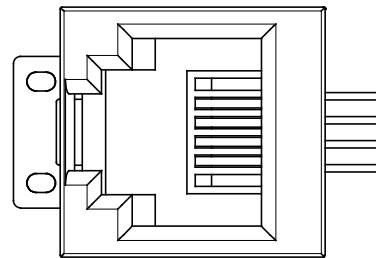
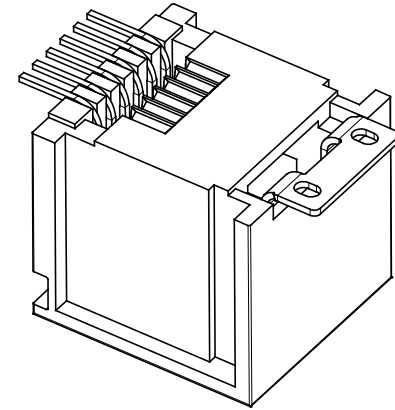
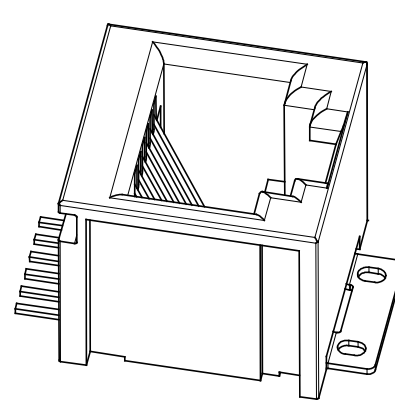
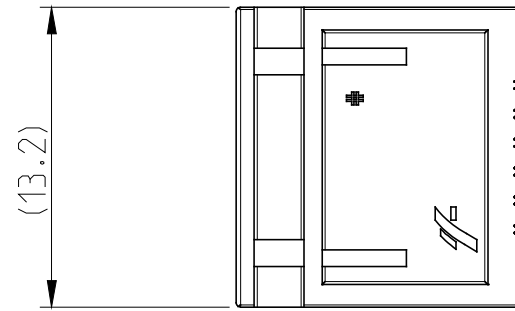


REFERENCE PLAN DEFINED
BY THE BEARING SURFACE

0.1
SEE NOTE 6



VACUUM AREA FOR 98432-X2XLF




98432-XX2

98432-XX3

98432-XX4

rev	ecn no	dr	date
M	F05-0247	DLE	05.09.30
N	F06-0242	DLE	06.07.20
P	F07-0280	LSA	07.11.29
R	F08-0127	LSA	08-02-15
S	F08-0154	LSA	08-04-04
T	F08-0199	LSA	08-07-02
-	-	-	-

www.fciconnect.com			surface ISO 1302	- ✓	tolerance std ±0.13 ±2°	projection ⊕	mm
			TOLERANCES UNLESS OTHERWISE SPECIFIED				
Dr	D LEGRAND	02.09.12	ANGULAR	LINEAR	0.X	±Y	size A3
Eng	P NIZZI	02.09.12			0.XX	±Y	
Chr	D LEGRAND	02.09.12	0° ±Y°		0.XXX	±Y	ECN F06-0242
Appr	P NIZZI	02.09.12	Product family		MODULAR JACK		Spec ref -
 title VERTICAL SMT 6 POSITIONS			catalog no			98432-XXX(LF)	Rev. T
						CUSTOMER	sheet 1 of 2

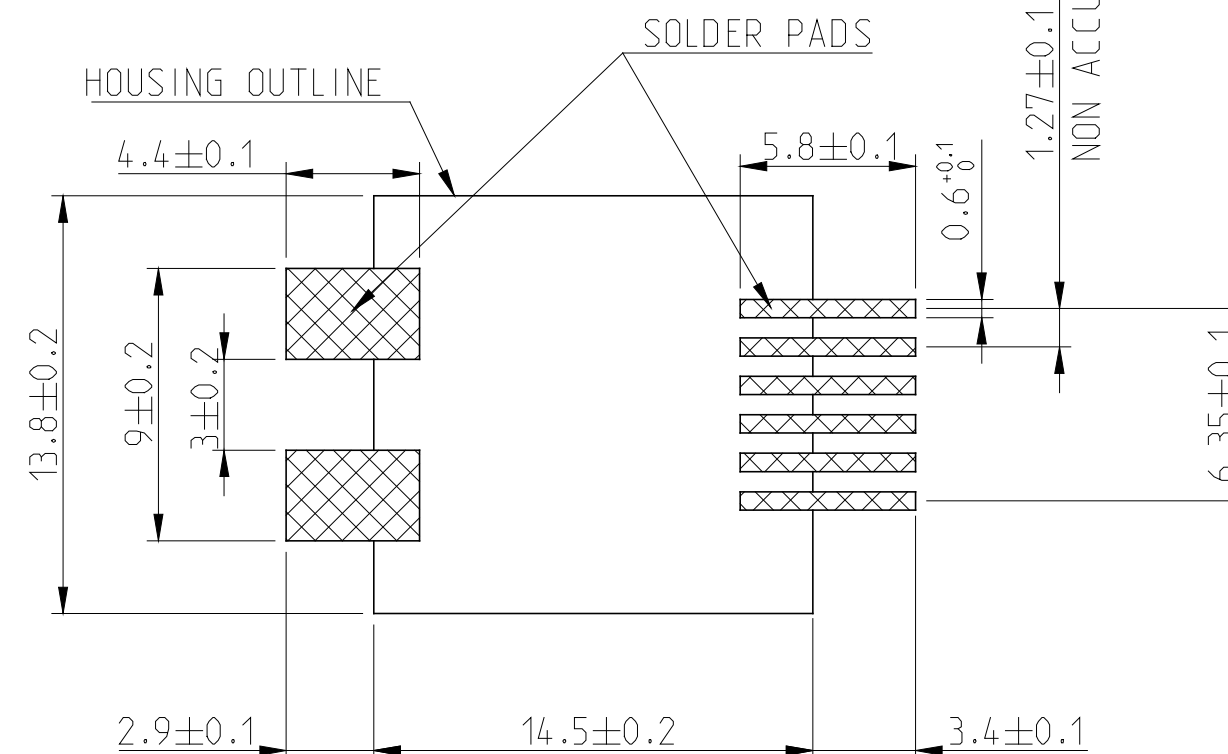
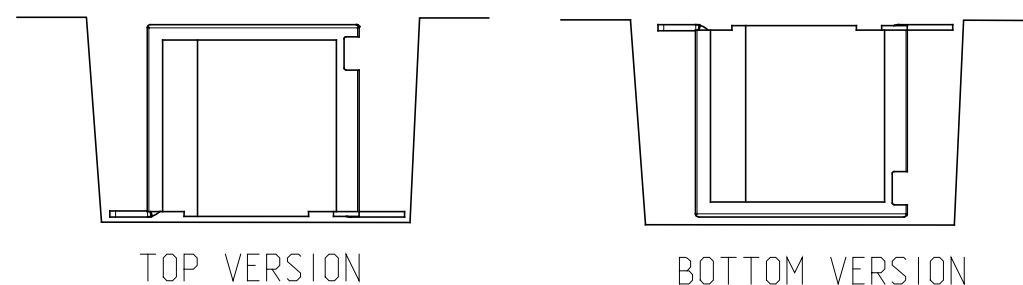
PRODUCT N°
98432-XXXLF

CONTACT PLATING OPTION
1= GXT 0.76 µm
3= 0.76 µm GOLD
5= 1.27 µm GOLD

PACKAGE OPTIONS	VERSION	PLASTIC COLOR
TAPE AND REEL PACKAGE 1= LOADED FACE UP	TOP	BLACK
TAPE AND REEL PACKAGE 2= LOADED FACE DOWN	BOTTOM	BLACK
TAPE AND REEL PACKAGE 3= LOADED FACE UP	TOP	GREY

TERMINAL LOADING OPTIONS
1 = FULLY LOADED 6 POSITIONS
2 = ONLY POS 2,3,4,5 LOADED
3 = ONLY POS 1,2,5,6 LOADED
4 = ONLY POS 3,4 LOADED

WHEN NEEDED, SUFFIX LETTER "LF"
INDICATES THE PRODUCT IS RoHS
COMPATIBLE SEE NOTE 7.



- NOTES:
- MATERIAL:
HOUSING: HIGH TEMP. PLASTIC, COLOR : SEE TABLE HERE ABOVE.
TERMINAL PHOSPHOR BRONZE
 - PLATING
CONTACT AREA: OPTIONAL SEE TABLE
SOLDER TAIL: SnPb 90/10 2 µm MIN
NO RAW EDGES EXCEPT SOLDER TAILS TIPS
 - AREA FOR VACUUM PICK AND PLACE VENTURY
 - PACKAGING SPECIFICATION SEE TA 858
 - DIMENSION MEASURED FROM "A" TO THE TOP OF PRODUCT
 - COPLANARITY SEE TA 861.
 - RoHS COMPATIBLE PRODUCT SPECIFICATIONS
 - PLATING:
 - "LF" MEANS THE PRODUCT IS LEAD-FREE,
2 µm MINIMUM MATTE TIN OVER 1.27 µm
MINIMUM NICKEL UNDERPLATE.
 - MANUFACTURING PROCESS COMPATIBILITY:
 - THE HOUSING WILL WITHSTAND EXPLOSURE TO
245 °C PEAK TEMPERATURE FOR 30 SECONDS
MAX IN A CONVECTION, INFRA-RED OR VAPOR
PHASE OR REFLOW OVEN.
 - LABELLING:
 - MEETS PACKAGING SPECS AS PER GS-14-920.
 - LEGAL STATEMENT: SEE GS-22-008

RECOMMENDED PCB FOOTPRINT

www.fciconnect.com			surface ISO 1302	- ✓	tolerance std ±0.13 ±2°	projection size A3	mm Scale 5:1
			TOLERANCES UNLESS OTHERWISE SPECIFIED				
Dr	D LEGRAND	02.09.12	ANGULAR	LINEAR	0.X	±Y	ECN F06-0242
Eng	P NIZZI	02.09.12			0.XX	±Y	
Chr	D LEGRAND	02.09.12	0° ±Y°		0.XXX	±Y	
Appr	P NIZZI	02.09.12	Product family MODULAR JACK			Spec ref -	
FCI		title VERTICAL SMT 6 POSITIONS			dwg no 98432		Rev. T
		catalog no	98432-XXX(LF)			CUSTOMER	sheet 2 of 2