

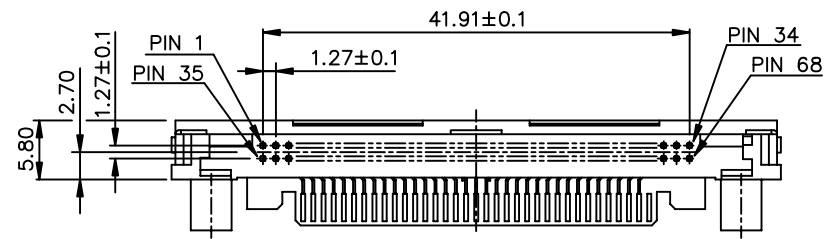
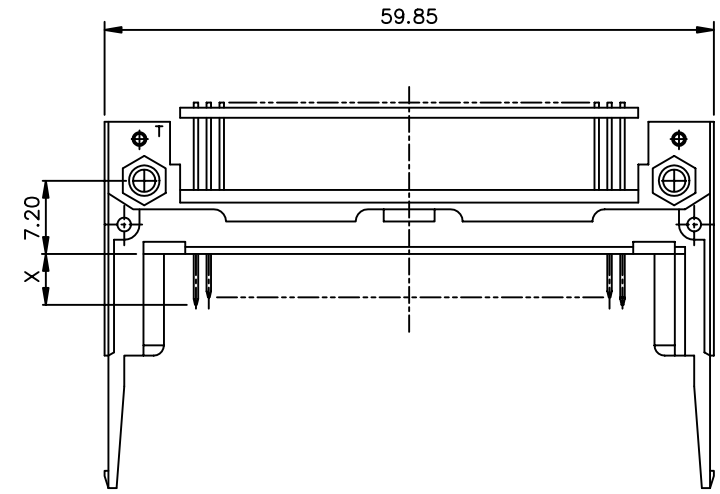
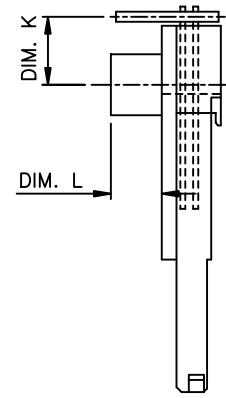
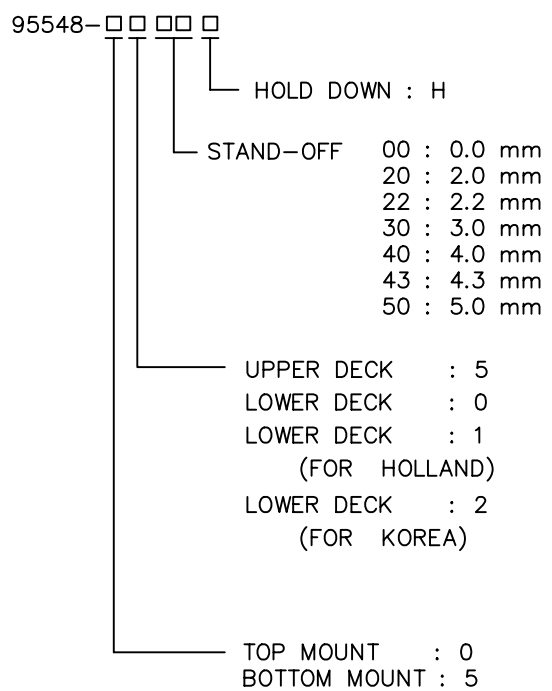
FCI CONFIDENTIAL



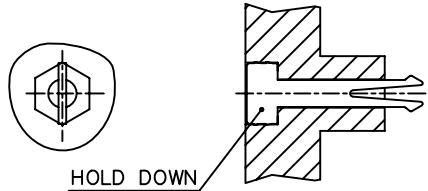
This document is the property of and embodies CONFIDENTIAL and PROPRIETARY information of FCI. No part of the information shown on this document may be used in any way or disclosed to others without the written consent of FCI. Copyright FCI



PRODUCT NO.	DIM "X"		
	4.25±0.1	3.5±0.1	5.0±0.1
95548-****	OTHERS	36,67	1,17,34 35,51,68



NOTE:  
1. ADD "H" TO PART NUMBER FOR OPTIONAL HOLD DOWN  
(2 PER ASSEMBLY).



95548-0000	0	-0.3
95548-0050H	5	-0.3
95548-0222	2.2	2.15
95548-0150	5	-0.3
95548-0100	0	2.15
95548-0522	0	9.0
95548-0022	2.2	2.15
95548-0543	0	6.55
95548-0043	4.3	-0.3
95548-0550	0	6.55
95548-0050	5	-0.3
95548-0500	0	10.0

PRODUCT NO.	DIM.L	DIM.K±0.20
-------------	-------	------------

mat'l. code				surface	tolerance	projection	product family			
				ISO 1302	ISO 406 ISO 1101		PCMCIA			
ltr	ecn no	dr	date	tolerances unless otherwise specified			title			
J	T03-0464	W L	10/20/03	angles	linear	±0.3	68 POS EJECTOR HEADER HSG			
K	N04-0092	W B	12/01/04				HEADER ASS'Y			
L	N06-0110	M Z	07/01'06	±2°			scale 2:1			
M	N08-0099	M Z	05/20'08	dr	Mike Zhou	07/01'06	dwg no			
				enr	Mike Zhou	07/01'06	sheet 1 of 4 size			
				chr	Qin David	07/01'06	95548			
				appd	Jack Wang	07/01'06	A4			
							type			
							CUSTOMER Drawing			
sheet	revision	M	M	M	M					
index	sheet	1	2	3	4					

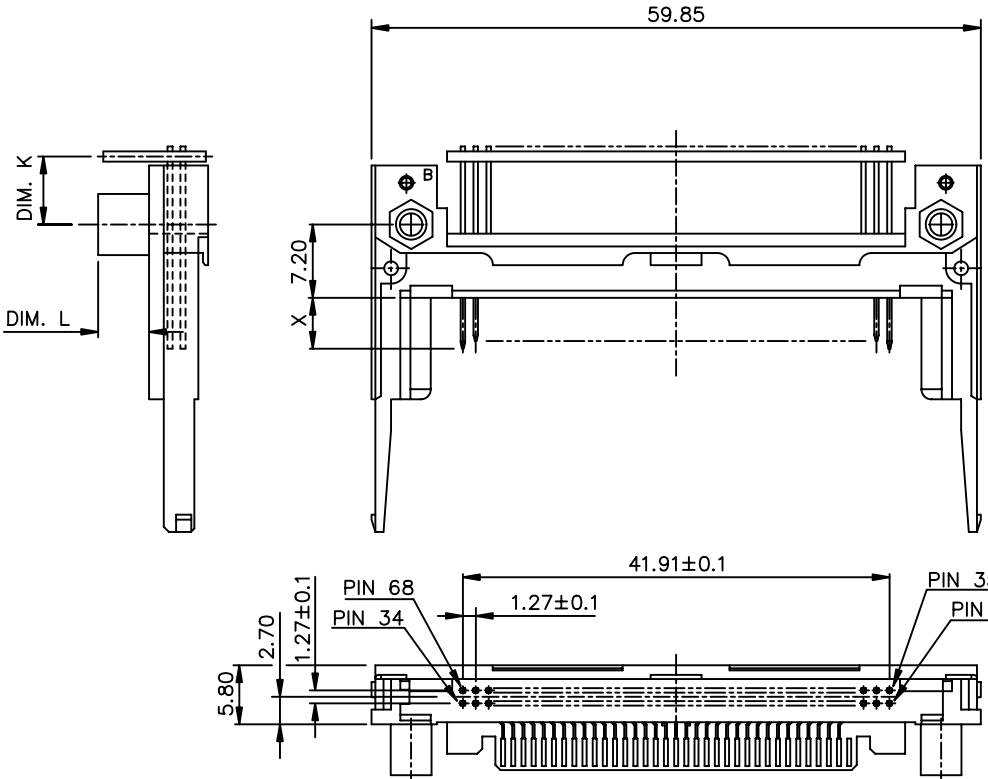
FCI CONFIDENTIAL



This document is the property of and embodies CONFIDENTIAL and PROPRIETARY information of FCI. No part of the information shown on this document may be used in any way or disclosed to others without the written consent of FCI.



PRODUCT NO.	DIM"X"		
95548-****	4.25±0.1	3.5±0.1	5.0±0.1
	OTHERS	36,67	1,17,34 35,51,68



95548-□□□	STAND-OFF	00 : 0.0 mm
		20 : 2.0 mm
		22 : 2.2 mm
		30 : 3.0 mm
		40 : 4.0 mm
		43 : 4.3 mm
		50 : 5.0 mm
	UPPER DECK	: 5
	LOWER DECK	: 0
	TOP MOUNT	: 0
	BOTTOM MOUNT	: 5

95548-5150	5	2.15
95548-5522	0	9.0
95548-5022	2.2	2.15
95548-5543	0	6.55
95548-5043	4.3	-0.3
95548-5550	0	6.55
95548-5050	5	-0.3
95548-5500	0	10.0

PRODUCT NO.	DIM.L	DIM.K±0.20
-------------	-------	------------

mat'l. code				surface	tolerance	projection	product family			
				ISO 1302	ISO 406 ISO 1101		PCMCIA			
ltr	ecn no	dr	date	tolerances unless otherwise specified			title			
M				angles	linear	±0.3	68 POS EJECTOR HEADER HSG			
				±2°		scale	HEADER ASS'Y			
				dr	Mike Zhou	07/01'06	dwg no		sheet 2 of 4	size
				enr	Mike Zhou	07/01'06	95548		A4	
				chr	Qin David	07/01'06	type		CUSTOMER	Drawing
				appd	Jack Wang	07/01'06				
sheet	revision									
index	sheet									

PRODUCT NO.	DIM "X"		
	4.25±0.1	3.5±0.1	5.0±0.1
95548-****LF	OTHERS	36,67	1,17,34 35,51,68

95548-□□□□□

LEAD-FREE OPTION : LF

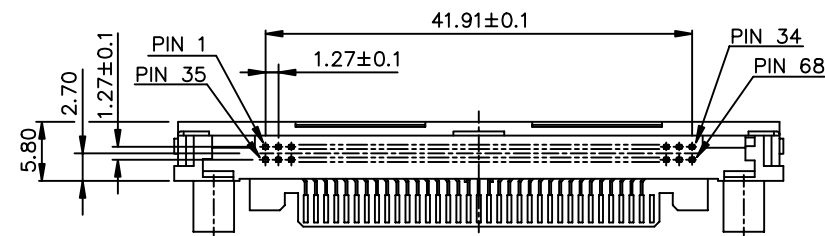
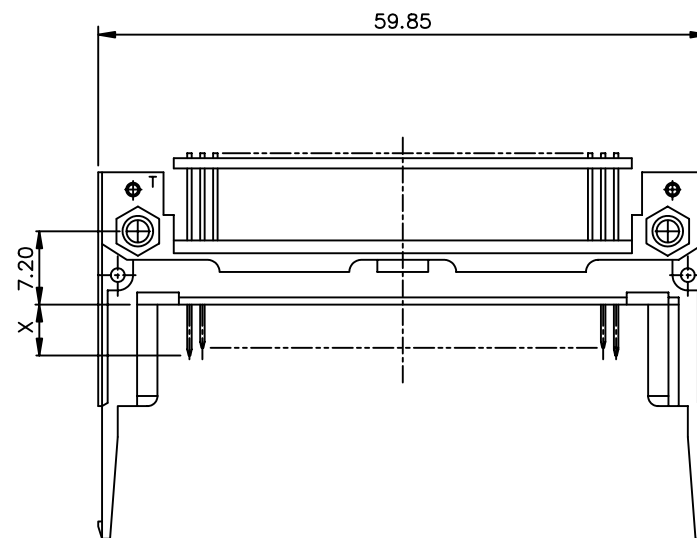
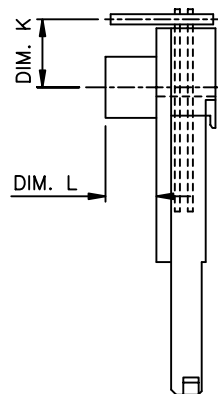
HOLD DOWN : H

STAND-OFF

00	: 0.0 mm
20	: 2.0 mm
22	: 2.2 mm
30	: 3.0 mm
40	: 4.0 mm
43	: 4.3 mm
50	: 5.0 mm

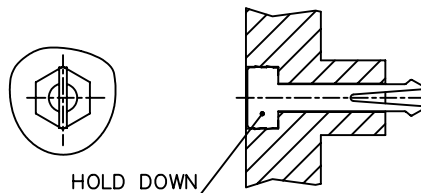
UPPER DECK : 5  
LOWER DECK : 0  
LOWER DECK : 1  
(FOR HOLLAND)  
LOWER DECK : 2  
(FOR KOREA)

TOP MOUNT : 0  
BOTTOM MOUNT : 5



## NOTE:

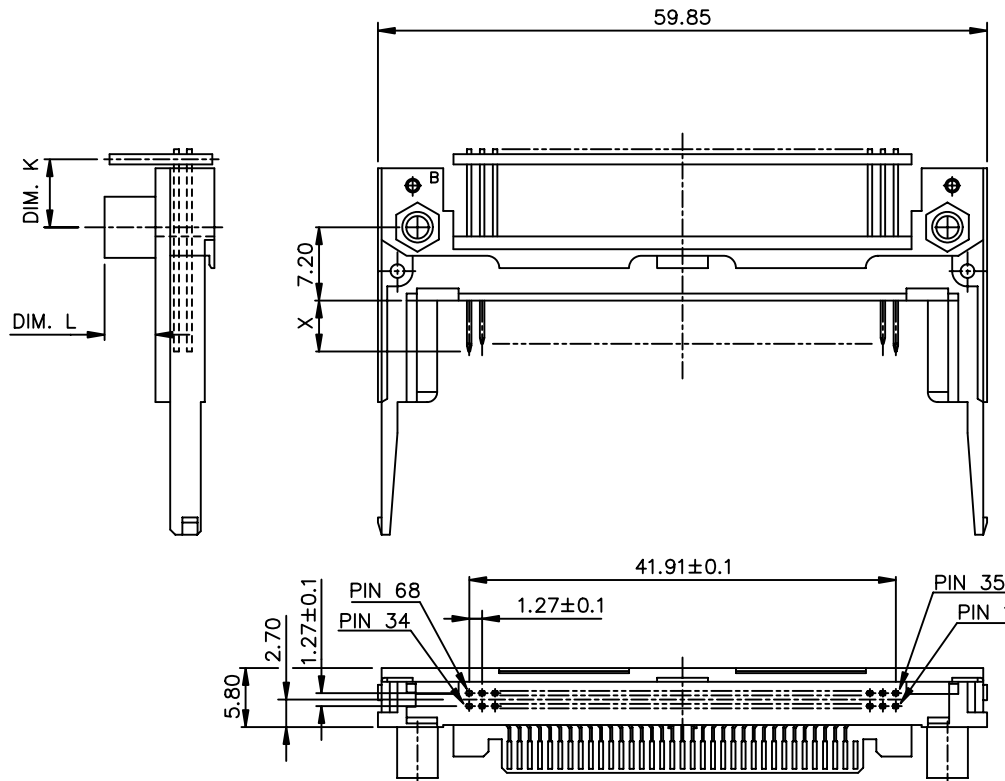
1. ADD "H" TO PART NUMBER FOR OPTIONAL HOLD DOWN  
(2 PER ASSEMBLY).



95548-0100MLF	0	2.15
95548-0000LF	0	-0.3
95548-0051LF	5	-0.3
95548-0050HLF	5	-0.3
95548-0222LF	2.2	2.15
95548-0150LF	5	-0.3
95548-0100LF	0	2.15
95548-0522LF	0	9.0
95548-0022LF	2.2	2.15
95548-0543LF	0	6.55
95548-0043LF	4.3	-0.3
95548-0550LF	0	6.55
95548-0050LF	5	-0.3
95548-0500LF	0	10.0

PRODUCT NO.	DIM.L	DIM.K±0.20
-------------	-------	------------

PRODUCT NO.	DIM "X"		
95548-****LF	4.25±0.1	3.5±0.1	5.0±0.1
	OTHERS	36,67	1,17,34 35,51,68



Note:

1. FINISH (PIN)  
UNDER PLATING : 0.5  $\mu$ m MIN. Ni  
CONTACT AREA : 0.1  $\mu$ m MIN. GOLD OVER  
0.5  $\mu$ m MIN. Pd-Ni

SOLDER TAIL:

TIN LEAD PLATING: 2.5  $\mu$ m MIN. Sn-Pb  
LEAD FREE PLATING: 2.5  $\mu$ m MIN. PURE TIN

2. IF LEAD FREE P/N. THE HOUSING WILL WITHSTAND EXPOSURE TO 260°C PEAK FOR 10 SECONDS IN A WAVE SOLDER APPLICATION WITH A 1.00MM MINIMUM THICK CIRCUIT BOARD
3. IF LEAD FREE P/N. PACKAGING MEETS GS-14-920 SPECIFICATION

95548-□□□□

LEAD-FREE OPTION : LF

STAND-OFF  
00 : 0.0 mm  
20 : 2.0 mm  
22 : 2.2 mm  
30 : 3.0 mm  
40 : 4.0 mm  
43 : 4.3 mm  
50 : 5.0 mm

UPPER DECK : 5  
LOWER DECK : 0

TOP MOUNT : 0  
BOTTOM MOUNT : 5

95548-5150LF	5	2.15
95548-5522LF	0	9.0
95548-5022LF	2.2	2.15
95548-5543LF	0	6.55
95548-5043LF	4.3	-0.3
95548-5550LF	0	6.55
95548-5050LF	5	-0.3
95548-5500LF	0	10.0
PRODUCT NO.	DIM.L	DIM.K±0.20

mat'l. code				surface	tolerance	projection	product family			
				ISO 1302	ISO 406 ISO 1101		PCMCIA			
ltr	ecn no	dr	date	tolerances unless otherwise specified			title			
M				angles	linear	±0.3	68 POS EJECTOR HEADER HSG HEADER ASS'Y			
				±2°		scale				
				dr	Mike Zhou	07/01'06	dwg no			
				enr	Mike Zhou	07/01'06	sheet 4 of 4 size			
				chr	Qin David	07/01'06	95548			
				appd	Jack Wang	07/01'06	A4			
							type CUSTOMER Drawing			
sheet index	revision sheet									