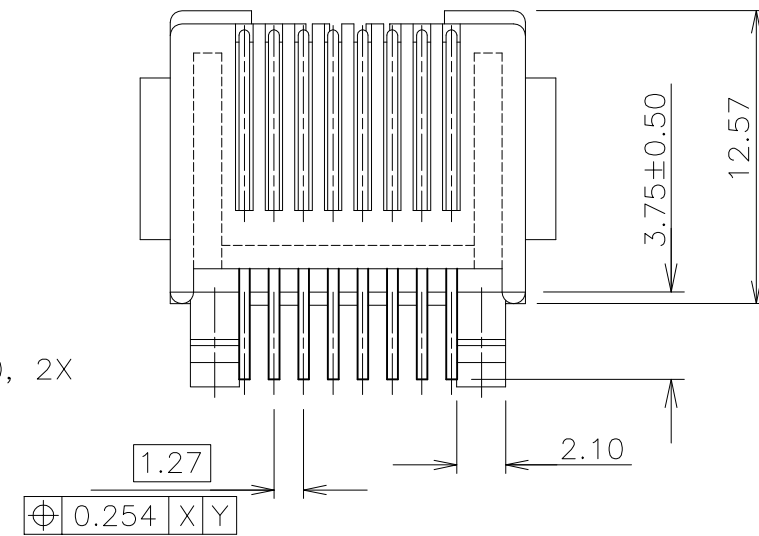
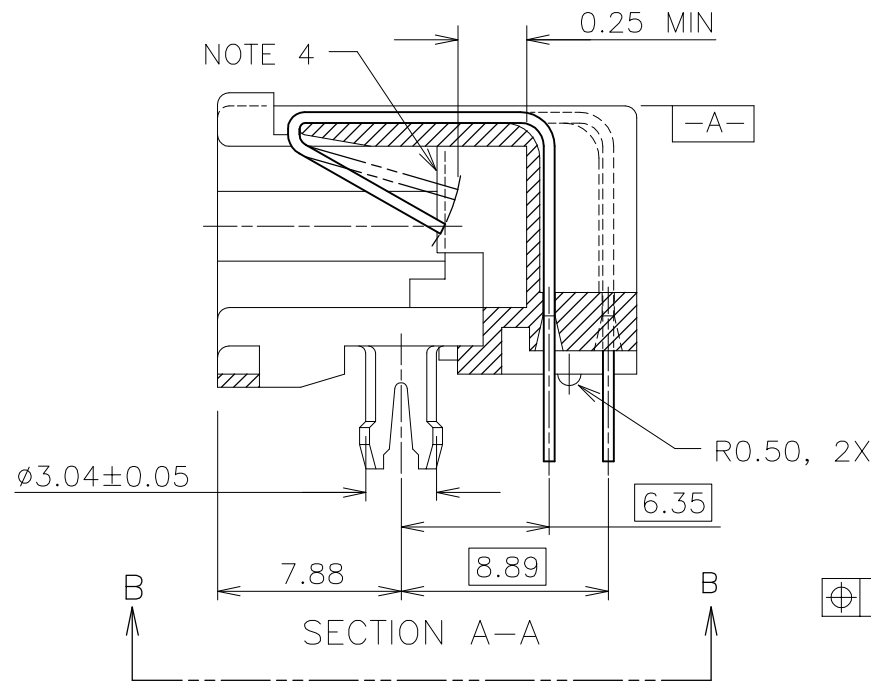
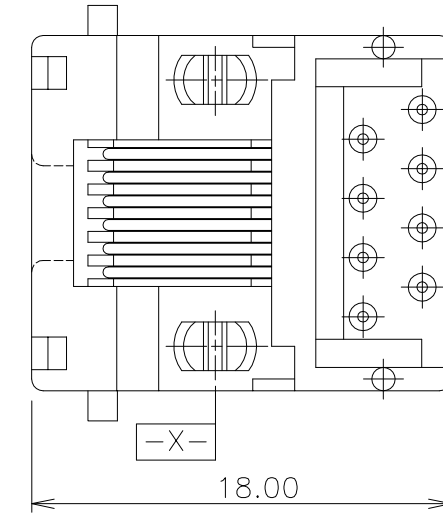
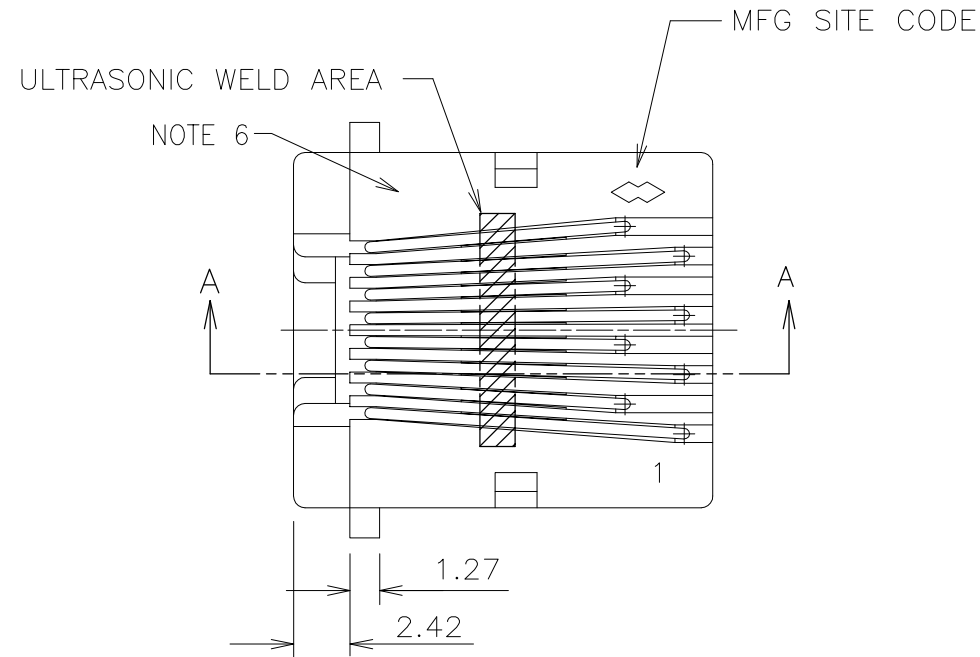
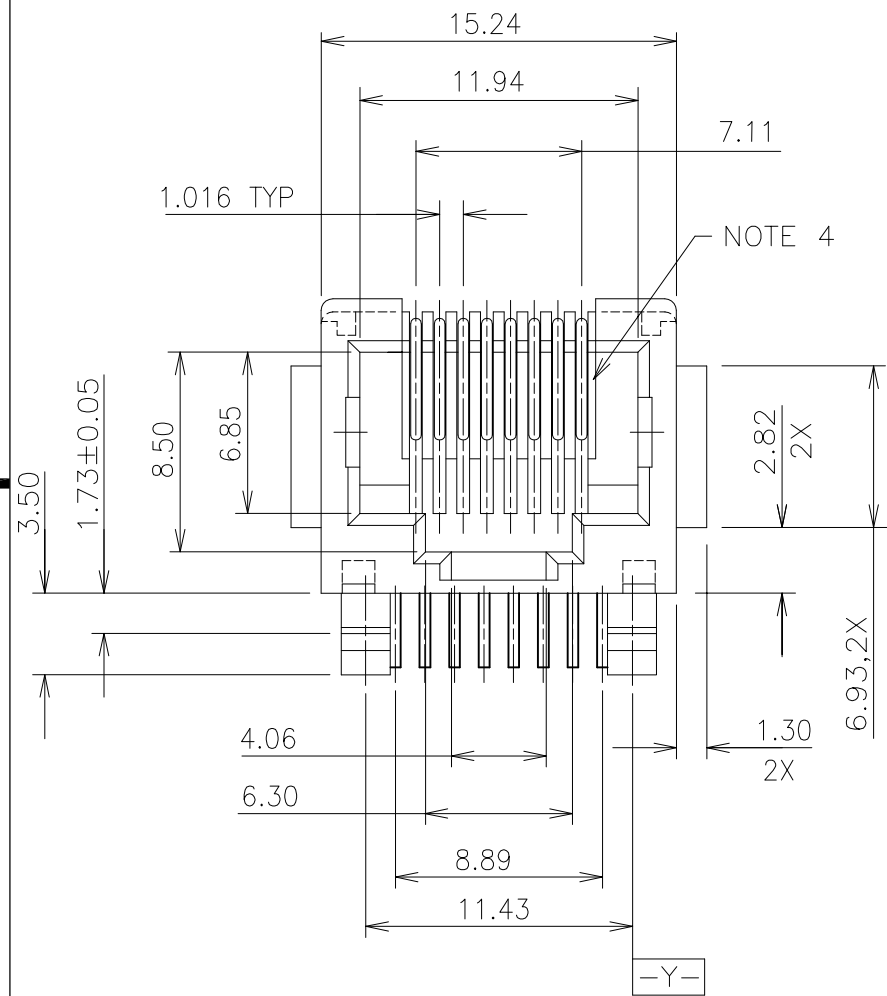
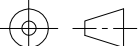


PRODUCT NO.  
SEE TABLE

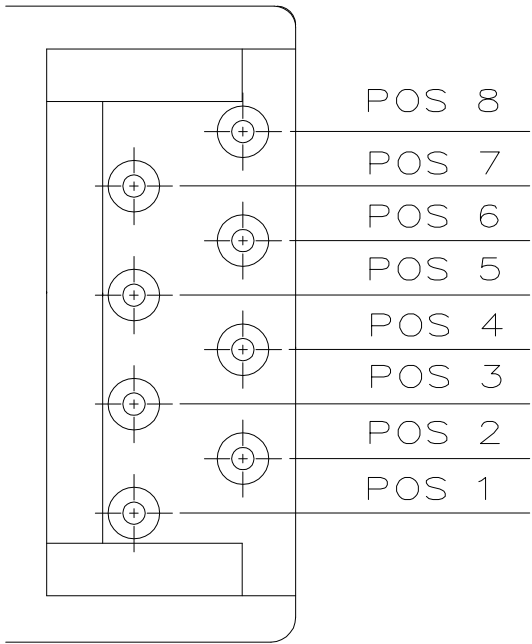


mat'l. code				—				tolerances unless otherwise specified				CUSTOMER COPY				<div><div>A</div><div>FCI</div><div>www.fciconnect.com</div></div>													
ltr	ecn no	dr	date	linear	.X ±.3				projection	title MODIFIED LOW PROFILE PCB III HORZ MOD JACK FOR 1.6MM P.C.B.																			
A	T40185		7/8/94		.XX ±.10																								
B	T50232	CL	8/11/95		.XXX ±.050																								
C	V60576	GAH	3/22/96	angles	0° ±2°				 MM scale 1:1	product family MODJACK size dwg no A4 94908								code 213											
D	TDD076	BKB	3/30/00	dr	DKLIN		7/6/94	sheet																					
E	V12594	LP	3/28/02	enr	TONY CHEN		7/6/94	index																					
F	V03-1103	PJ	10/22/03	chr	TONY CHEN		7/8/94	sheet		cage code 22526								4											
G	V05-0187	LP	3/23/05	appd	TONY CHEN		7/8/94	sheet										4											
sheet index		revision sheet		G	G																								
										3																			

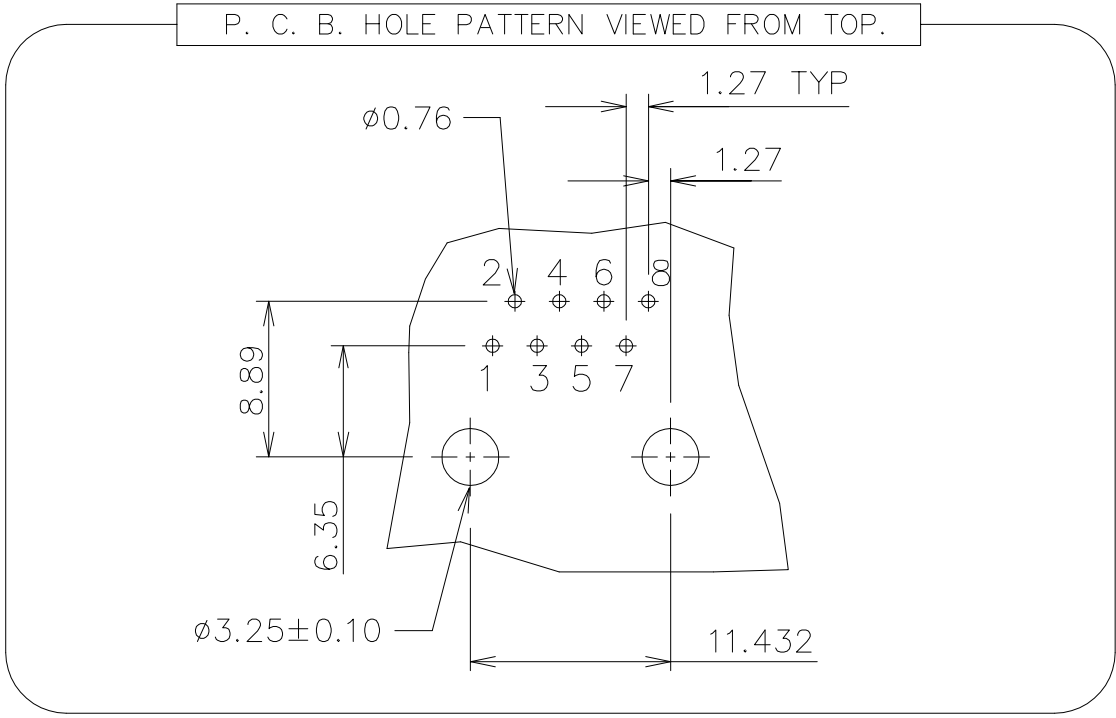
PRODUCT NUMBER	NO OF POS	LOADED POSITION
94908-X88	8	ALL POS.
94908-X86		2,3,4,5,6,7
94908-X84		3,4,5,6
94908-X84A		1,2,3,6
94908-X88LF	8	ALL POS.
94908-X86LF		2,3,4,5,6,7
94908-X84LF		3,4,5,6
94908-X84ALF		1,2,3,6

NOTE: PLEASE CHECK FOR AVAILABILITY, NOT ALL OPTIONS AVAILABLE.

PLATING CODE	PLATING	HSG COLOR
0	30μ" G.X.T.	BLACK
1	15μ" AU	
2	20μ" GFPD	
3	30μ" AU	
4	15μ" G.X.T	
5	50μ" AU	

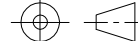



WIRE POSITION No



NOTES:

1. RECOMMENDED P.C.B THICKNESS 1.60 MM
2. HOUSING MAT'L: NYLON 66, 25% GLASS REINFORCED, UL94-V0, COLOR : SEE TABLE.  
THE HOUSING WILL WITHSTAND EXPOSURE TO 260 DEGREES C PEAK TEMPERATURE FOR 10 SECONDS IN A WAVE SOLDER APPLICATION WITH A 1.60mm MIN THICK CIRCUIT BOARD.
3. CONTACTS: PHOS BRONZE ALLOY UNS-C51000, 0.460 DIA. ROUND WIRE. SEE TABLE FOR PLATING.
- ④. PROTRUDED SHELF ONLY APPEARS ON 8-POS JACK.
5. STANDARD PACKAGING METHOD (USE TUBE): SEE GES-14-361. PACKAGING OF LEAD FREE PRODUCTS MEETS LABELING AND PACKAGING SPECIFICATION GS-14-920.
- ⑥. COMPANY LOGO LOCATED IN THIS AREA ,AND WOULD APPEAR IN THE SAME SHIPMENT UNLESS LOGO SPEC HEREIN IS UPDATED.
7. LEAD FREE PRODUCTS MEET EUROPEAN UNION DIRECTIVES AND OTHER COUNTRY REGULATIONS AS DESCRIBED IN GS-22-008.

mat'l. code —				tolerances unless otherwise specified						CUSTOMER COPY			<div><div><div>A</div><div>FCI</div></div><div>www.fciconnect.com</div></div>																																																																																																																																																																																																																																																																																																																																																																																																																																																																																																																																																																																																																																																																																																																																																																																																																																																																																																																																																																																																																																																																																																																																																																																																																	
ltr	ecn no	dr	date	linear	.X ±.3								projection 	title MODIFIED LOW PROFILE PCB III HORZ MOD JACK FOR 1.6MM P.C.B.																																																																																																																																																																																																																																																																																																																																																																																																																																																																																																																																																																																																																																																																																																																																																																																																																																																																																																																																																																																																																																																																																																																																																																																																																
G					.XX ±.10																																																																																																																																																																																																																																																																																																																																																																																																																																																																																																																																																																																																																																																																																																																																																																																																																																																																																																																																																																																																																																																																																																																																																																																																																									
					.XXX ±.050																																																																																																																																																																																																																																																																																																																																																																																																																																																																																																																																																																																																																																																																																																																																																																																																																																																																																																																																																																																																																																																																																																																																																																																																																									
				angles	0° ±2°						<div>MM</div> <div></div> <div>scale 1:1</div>	<div><div>product family</div><div>MODJACK</div></div> <div><div>size</div><div>dwg no</div><div>94908</div></div> <div><div>code</div><div>213</div></div> <div><div>sheet</div><div>2 of 2</div></div>																																																																																																																																																																																																																																																																																																																																																																																																																																																																																																																																																																																																																																																																																																																																																																																																																																																																																																																																																																																																																																																																																																																																																																																																																		
				dr	DKLIN			7/6/94																																																																																																																																																																																																																																																																																																																																																																																																																																																																																																																																																																																																																																																																																																																																																																																																																																																																																																																																																																																																																																																																																																																																																																																																																						
				enrg	TONY CHEN			7/6/94																																																																																																																																																																																																																																																																																																																																																																																																																																																																																																																																																																																																																																																																																																																																																																																																																																																																																																																																																																																																																																																																																																																																																																																																																						
				chr	TONY CHEN			7/8/94																																																																																																																																																																																																																																																																																																																																																																																																																																																																																																																																																																																																																																																																																																																																																																																																																																																																																																																																																																																																																																																																																																																																																																																																																						
				appd	TONY CHEN			7/8/94																																																																																																																																																																																																																																																																																																																																																																																																																																																																																																																																																																																																																																																																																																																																																																																																																																																																																																																																																																																																																																																																																																																																																																																																																						
sheet index		revision sheet																																																																																																																																																																																																																																																																																																																																																																																																																																																																																																																																																																																																																																																																																																																																																																																																																																																																																																																																																																																																																																																																																																																																																																																																																												

cage code  
22526