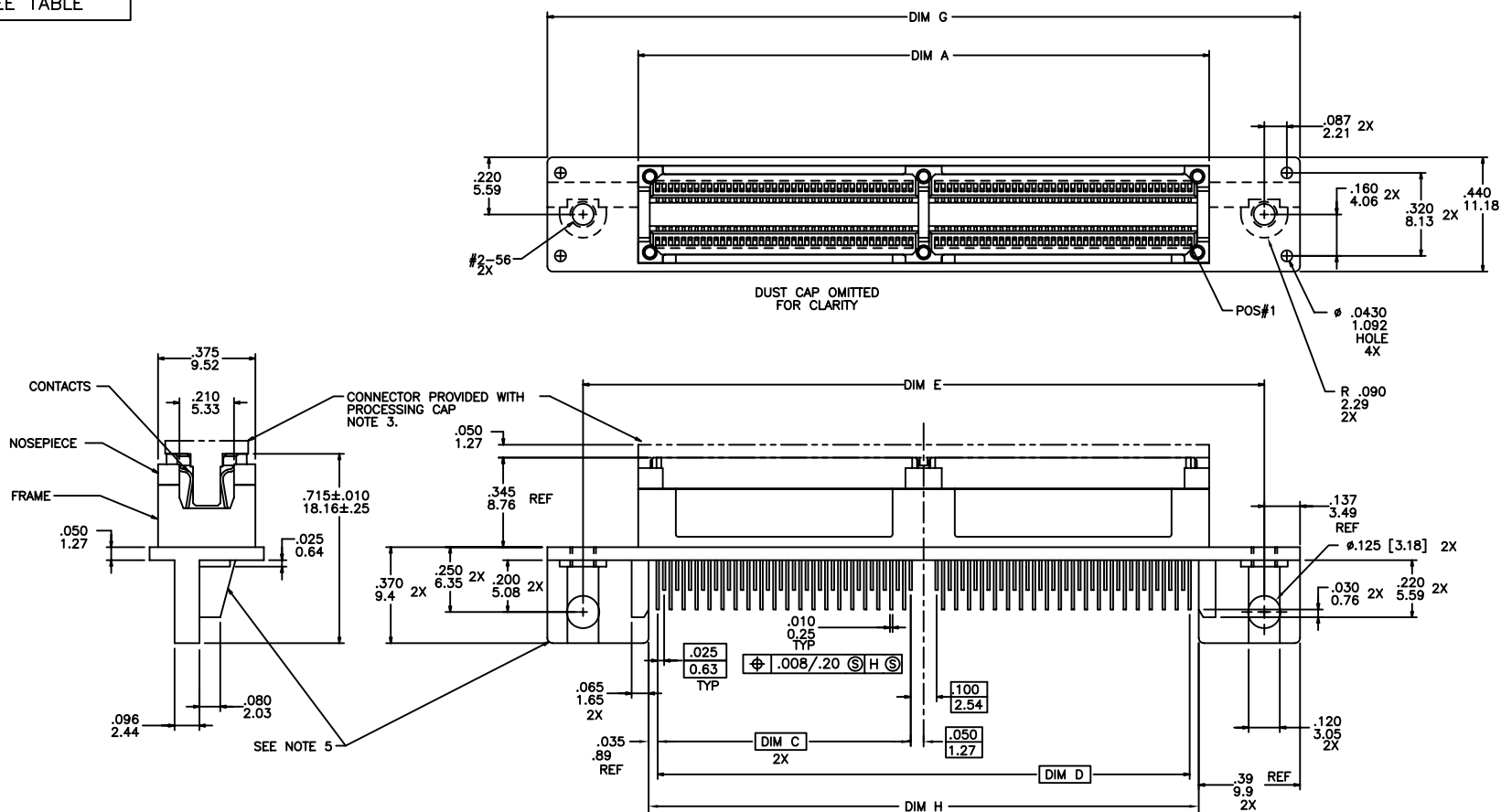
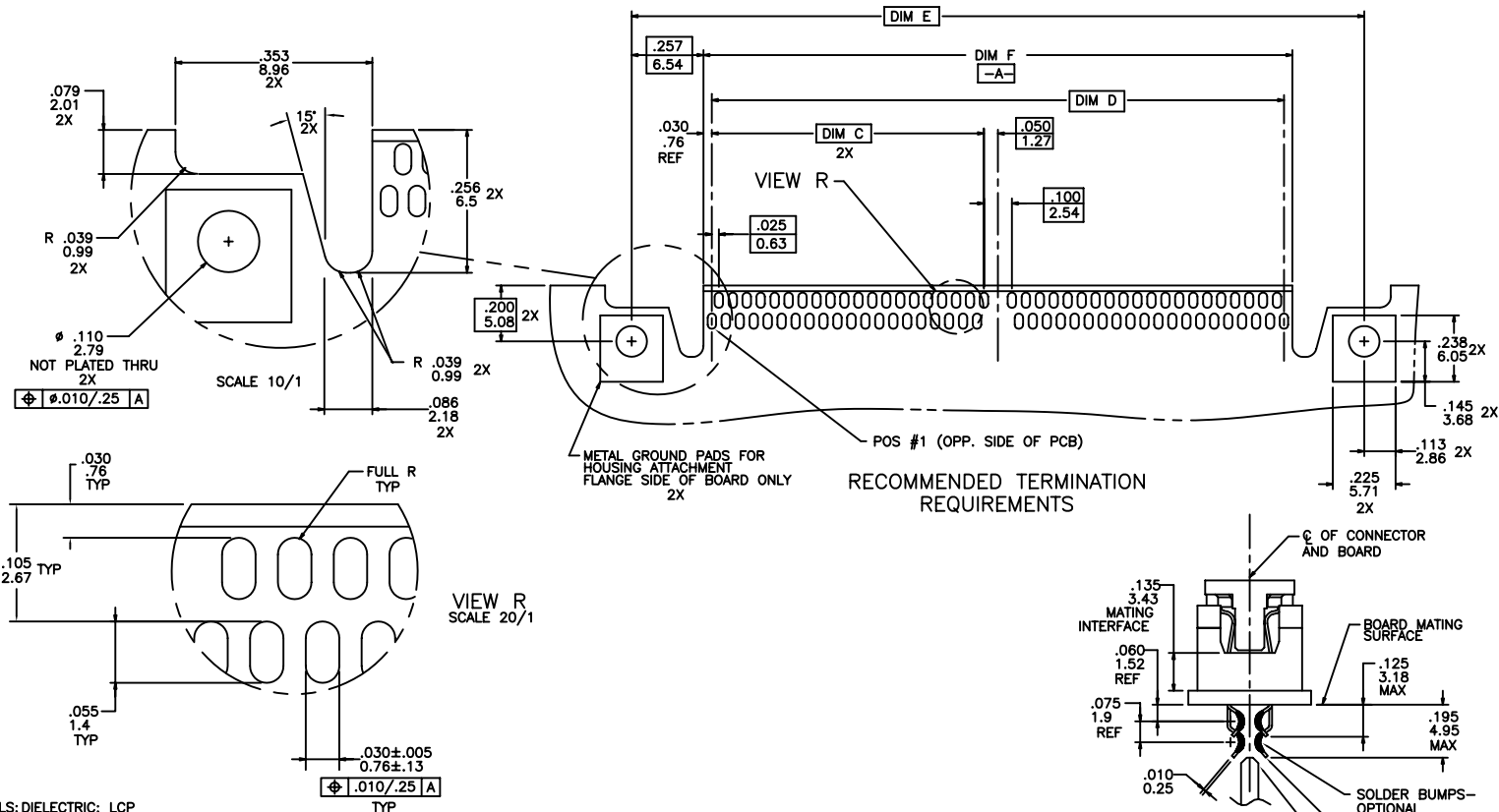


SEE TABLE



| | | | | | | | | | | | | | | | | |
|-------------|----------|----------------|----------|---------------------------------------|------------|---------------------|---------|------------|--|--|--------|--|--------------|--|------|--|
| mat'l. code | | | | surface | | tolerance | | projection | | product family | | | | | | |
| NOTE 1 | | | | ISO 1302 | | ISO 406 ISO 1101 | | | | MICROPAX | | | | | | |
| litr | ecn no | dr | date | tolerances unless otherwise specified | | | | INCH/MM | | title .025M STRADDLE RECEPT. DOUBLE MODULE | | | | | | |
| F | V60661 | LSS | 4/15/96 | angles | | linear | | | | | | | | | | |
| G | V61446 | EPK | 10/10/96 | | | | | | | | | | | | | |
| H | V70193 | RGD | 2/19/97 | 0° ± 2° | | | | scale 1:1 | | | | | | | | |
| J | V12115 | MEM | 10/09/01 | dr | M. CORNMAN | | 5/09/94 | | | | dwg no | | sheet 1 of 3 | | size | |
| K | M06-0279 | MGR | 7/24/06 | engr | M. HAHN | | 5/09/94 | | | | 94662 | | A | | | |
| L | M07-0096 | AGS | 2/08/07 | chr | M. HAHN | | 5/09/94 | | | | | | | | | |
| M | M08-0251 | MHT | 9/08/08 | appd | M. HAHN | | 5/09/94 | | | | | | | | | |
| sheet index | | revision sheet | | M | M | M | | | | | | | | | | |
| | | | | 1 | 2 | 3 | | | | | | | | | | |

| PRODUCT NO. NOTE 6 | NO. OF CONTACTS | DIM A | DIM C | DIM D | DIM E | DIM F | DIM G | DIM H | BOARD THICKNESS | SOLDERBUMP | CONTACT PLATING NOTE 2 | PROCESSING CAP | NOTE 5 |
|-----------------------|--------------------|-------------|-------------|-------------|-------------|-------------|-------------|-------------|--------------------|------------|------------------------------|------------------|--------|
| 94662-131 | 200 | 2.700/68.58 | 1.225/31.12 | 2.550/64.77 | 3.125/79.38 | 2.610/66.29 | 3.400/86.36 | 2.620/66.55 | .062/1.58 | YES | 30 GXT | ORDER SEPARATELY | NO |
| 94662-134 | | | | | | | | | .074/1.88 | | | | NO |
| 94662-135 | | | | | | | | | .088/2.24 | | | | YES |

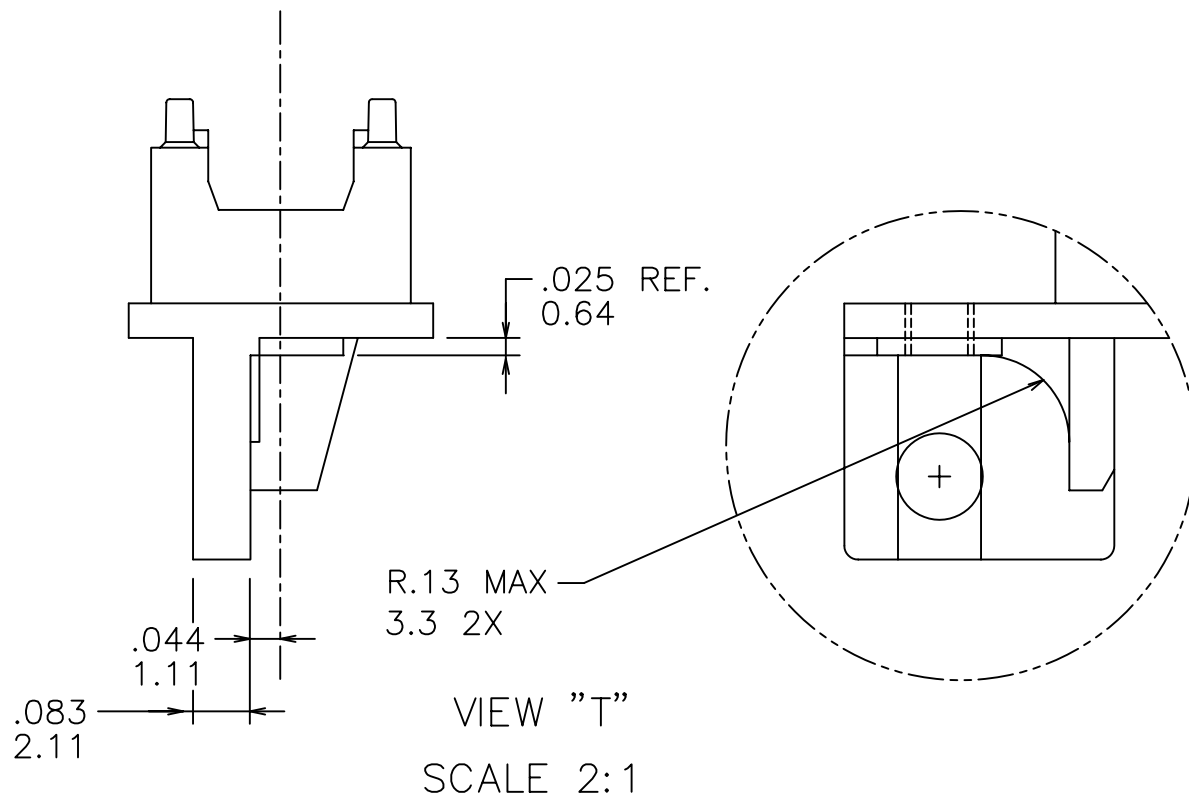


NOTES:

- MATERIALS: DIELECTRIC: LCP
CONTACTS: Be Cu
FRAME: ZINC ALLOY #3
- PLATING:
SOLDER TAILS: 150u"/3.81u Sn Pb
FRAME: 100u"/2.54u Ni
CONTACT:
30u"/.76um GXT OVER 50u"/1.27um Ni
LF OPTION
SOLDER TAILS: 150u"/3.81u Sn
FRAME: 100u"/2.54u Ni
CONTACT:
30u"/.76um GXT OVER 50u"/1.27um Ni
- DO NOT REMOVE PROCESSING CAP
UNTIL SOLDERING IS COMPLETED.
CAP WILL PREVENT POTENTIAL NOSE
PIECE BOW DURING HIGH TEMP.
SOLDERING PROCESS.
- PCB CHAMFER FOR -.135 TO BE
BE .026±.010/0.66±0.25 X 33°.
- MOUNTING FLANGES FOR -.135
ARE MACHINED TO ACCOMMODATE .088"
THK. BOARD & MAINTAIN CENTERLINE OF
CONNECTOR & BOARD ON THE SAME PLANE.
SEE VIEW "T" FOR FLANGE DIMENSIONS.
PLATING TO BE PERFORMED AFTER MACHING
- ADD "LF" SUFFIX AT THE END OF PART
NUMBER FOR LEAD FREE OPTION.
- IF PART NO "LF" THIS PRODUCT MEETS EUROPEAN
UNION DIRECTIVES AND OTHER COUNTRY REGULATION
AS DESCRIBED IN GS-22-008.
- THE HOUSING WILL WITHSTAND EXPOSURE TO 260°C PEAK TEMPERATURE
FOR 20 SECONDS IN A CONVECTION, INFRA-RED OR VAPOR PHASE REFLOW
OVEN. SEE APPLICATION NOTES/PROCEDURES IF THEY ARE AVAILABLE.
- SEE BUS-20-084 (SET-UP APPLICATION SPEC.) FOR REFERENCE.

| | | | | |
|-------------|----------|---------------------|------------|---|
| mat'l. code | surface | tolerance | projection | product family |
| NOTE 1 | ISO 1802 | ISO 406 ISO 1101 | | MICROPAX |
| ltr | ecr no | dr | date | title |
| M | | | | .025M STRADDLE RECEPT. DOUBLE MODULE |
| | angles | linear | | dwg no |
| | 0°±2' | | | 94662 |
| | dr | M. CORNMAN | 5/09/94 | sheet 2 of 3 |
| | engr | M. HAHN | 5/09/94 | size |
| | chr | M. HAHN | 5/09/94 | A3 |
| | appd | M. HAHN | 5/09/94 | type |
| sheet | revision | | | Product Customer Drawing |
| index | sheet | | | |

PRODUCT NUMBER
SEE TABLE



| | | | | | | | |
|-------------|----------|----|------|---------------------------------------|---------------------|------------|---|
| mat'l. code | | | | surface | tolerance | projection | product family |
| NOTE 1 | | | | ISO 1302 | ISO 406 ISO 1101 | | MICROPAX |
| ltr | ecr no | dr | date | tolerances unless otherwise specified | | INCH/MM | title |
| M | | | | angles | linear | | .025M STRADDLE RECEPT. DOUBLE MODULE |
| | | | | 0° ± 2° | | | |
| | | | | dr | M. CORNMANN | 5/09/94 | scale 1:1 |
| | | | | enr | M. HAHN | 5/09/94 | FCI |
| | | | | chr | M. HAHN | 5/09/94 | |
| | | | | appd | M. HAHN | 5/09/94 | |
| sheet | revision | | | | | | dwg no |
| index | sheet | | | | | | 94662 |
| | | | | | | | sheet 3 of 3 |
| | | | | | | | size A3 |
| | | | | | | | type Product Customer Drawing |