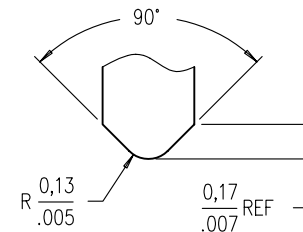
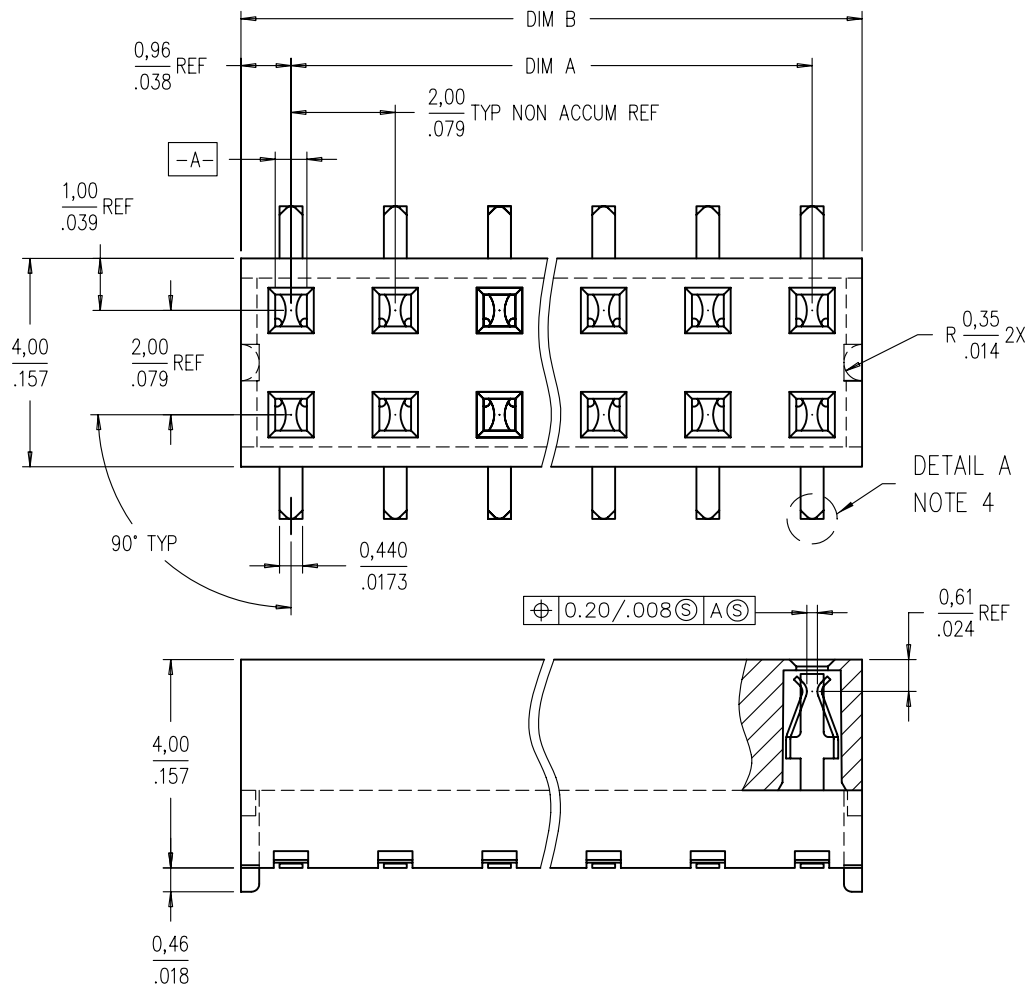


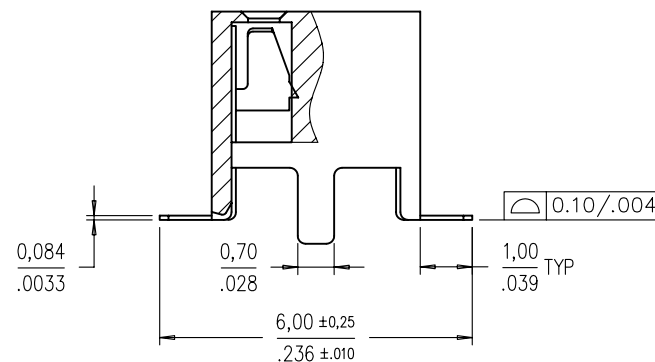
Tous droits strictement reserves. Reproduction ou communication a des tiers interdite sous quelque forme que ce soit sans autorisation ecrite du proprietaire. Propriete de c FCI. Droits de reproduction FCI.

FCI

All rights strictly reserved. Reproduction or issue to third parties in any form whatever is not permitted without written authority from the proprietor. Property of FCI. Copyright FCI.



DETAIL A



CONFIDENTIAL

mat'l. code				tolerances unless otherwise specified		CUSTOMER COPY	title
litr	ecn no	dr	date	linear			
P	S70342	BSL	12/2/97		X.X±0.3/.XX±.01	projection	www.fciconnect.com
R	S90011	BSL	2/2/99		X.XX±0.13/.XXX±.005		
S	V94400	BSL	12/1/99	angles	X.XXX±0.051/.XXX±.0020	MM/INCH	product family LPVCC
T	S05-0025	KBM	2/17/05		ANGLES ±2°		
				dr	BS LOW 1/6/00	scale	code
				enrg	BS LOW 1/6/00		
				chr	KB MAH 2/17/05	10:1	size dwg no
				appd	JOEY NG 2/17/05		
sheet index		revision sheet	T T				
			1 2				

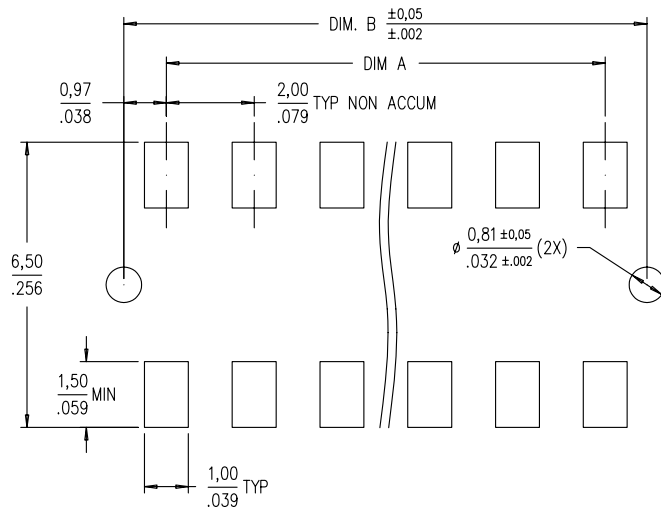
cage code 22526

PDM: Rev:T

STATUS: Released

Printed: Feb 01, 2007

PRODUCT NO	POSITIONS	DIM. A	DIM. B
92086-X04	2 X 2	2,00/,079	3,92/,154
-X06	2 X 3	4,00/,158	5,92/,233
-X08	2 X 4	6,00/,236	7,92/,312
-X10	2 X 5	8,00/,315	9,92/,391
-X12	2 X 6	10,00/,394	11,92/,469
-X14	2 X 7	12,00/,472	13,92/,548
-X16	2 X 8	14,00/,551	15,92/,627
-X18	2 X 9	16,00/,630	17,92/,706
-X20	2 X 10	18,00/,709	19,92/,784
-X22	2 X 11	20,00/,787	21,92/,863
-X24	2 X 12	22,00/,866	23,92/,942
-X26	2 X 13	24,00/,945	25,92/1,020
-X28	2 X 14	26,00/1,024	27,92/1,099
-X30	2 X 15	28,00/1,102	29,92/1,178



## RECOMMENDED PAD LAYOUT

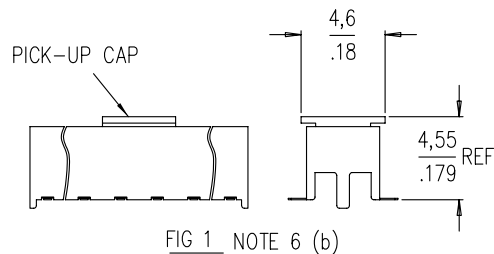


FIG 1 NOTE 6 (b)

PRODUCT NO	CONTACT AREA PLATING.	SOLDER TAIL PLATING.
92086-XXX	0 = 0,20um/8u" Au	TIN/LEAD
	1 = 0,76um/30u" Au	TIN/LEAD
	3 = 0,38um/15u" Au	TIN/LEAD
	6 = 0,76um/30u" PdNi WITH 0,076um/3u" Au FLASH (POST PLATED)	
92086-XXXLF	0 = 0,20um/8u" Au	100% MATTE TIN.
	1 = 0,76um/30u" Au	100% MATTE TIN.
	3 = 0,38um/15u" Au	100% MATTE TIN.
	6 = 0,76um/30u" PdNi WITH 0,076um/3u" Au FLASH (POST PLATED)	

NOTES :

- 1 HOUSING MAT'L : HIGH TEMP PLASTIC (PCT BLACK)  
2 TERMINAL MAT'L : BeCu.  
3 TERMINAL RETENTION 0,5 Kg/1,1 Lbs.  
4 "V" CUT OPTIONAL – MANUFACTURING PROCESS OPTION.  
5 PRODUCT DESCRIPTION CODE :

XXXXX-XXXLF

- LEAD FREE (8)
- EXTENSION NUMBER
- BASE NUMBER

- 6 PACKAGING :
  - (a) XXXXX-XXX --- STD PACKAGING IN TUBE.
  - (b) XXXXX-XXXTR --- TAPE AND REEL (CONDUCTIVE) PACKAGING WITH PICK-UP CAP (SEE FIG 1).
  - (c) XXXXX-XXXTRN --- TAPE AND REEL (CONDUCTIVE) PACKAGING WITHOUT PICK-UP CAP.
  - (d) XXXXX-XXXTC --- PACKAGING IN TUBE WITH PICK-UP CAP.
- 7 THE HOUSING WILL WITHSTAND EXPOSURE TO 255° C PEAK TEMPERATURE FOR 10 SECONDS IN A CONVECTION, INFRA-RED OR VAPOR PHASE REFLOW OVEN.
- ⑧ THIS PRODUCT MEETS EUROPEAN UNION DIRECTIVES AND OTHER COUNTRY REGULATIONS AS DESCRIBED IN GS-22-008.

CONFIDENTIAL

[illegible]

	cage code	22526
--	-----------	-------

STATUS: **Released**

Printed: Feb 01, 2007

ACAD

**PDM: Rev:T**