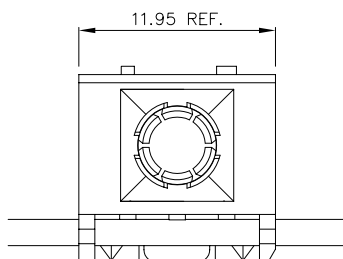
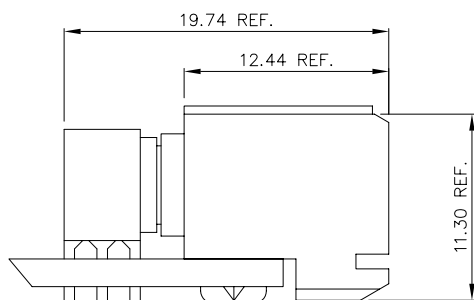
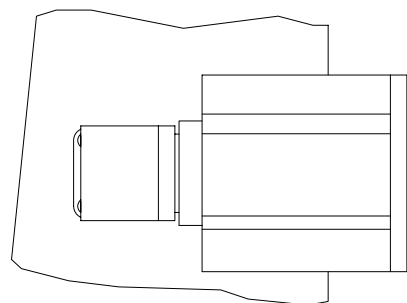
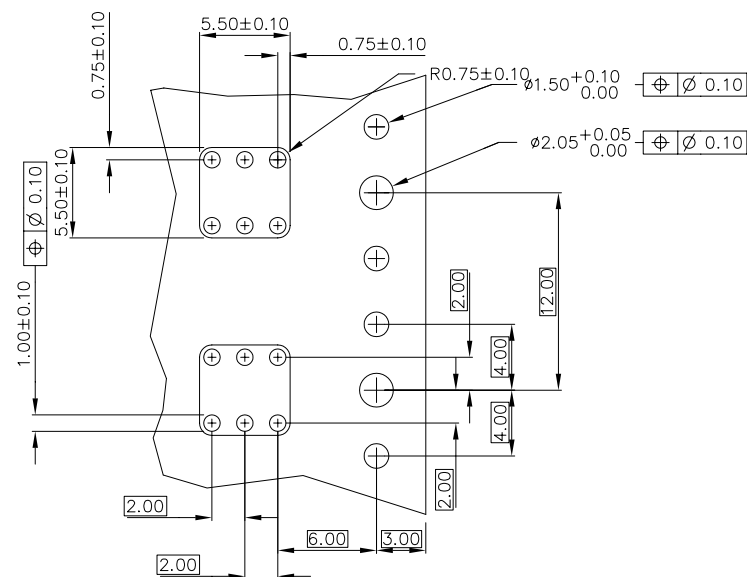
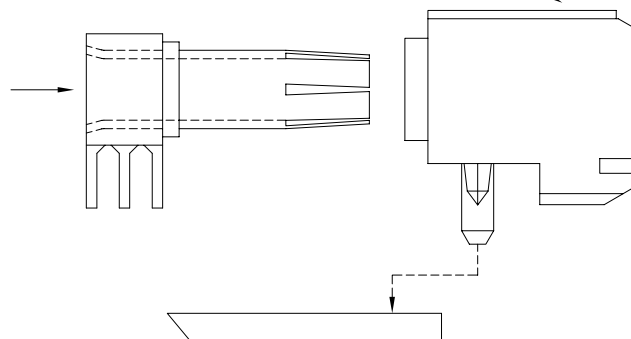


PRODUCT NUMBER	PCB THICKNESS
91877-001	1.6MM
91877-002	2.4MM
<del>91877-003</del>	<del>2.4MM</del>
91877-001LF	1.6MM
91877-002LF	2.4MM

OBSOLETE USE 91877-002



SEE NOTE 2



RECOMMENDED HOLE PATTERN  
COMPONENT SIDE

NOTE:

- HOUSING SHOWN FOR APPLICATION CLARITY AND DOES NOT COME WITH R.A.RECEPTACLE POWER CONTACT
- 4 ROW HSG W/HEAT STAKE PEG: P/N 70292-101  
4 ROW HSG W/PRESS PEG: P/N 89092-101  
5 ROW HSG W/HEAT STAKE PEG: P/N 73477-101  
5 ROW HSG W/PRESS PEG: P/N 73478-101
- RECEPTACLE CONTACT PLATING:  
GOLD OVER NICKEL
- PLATING ON TAILS OF 91877-YYY IS SnPb  
PLATING ON TAILS OF 91877-YYYLF IS Sn (LEAD FREE)
- IF P/N IS "LF" THE PRODUCT MEETS EUROPEAN UNION DIRECTIVES AND OTHER COUNTRY REGULATION AS DESCRIBED IN GS-22-008.

mat'l. code				surface		tolerance		projection		product family			
-				ISO 1302 ✓		ISO 406 ISO 1101				METRAL (tm)			
ltr	ecn	no	dr	date	tolerances unless otherwise specified					title			
B	v31676	SCS		9/08/93	angles	linear	xx ±.01/.3	mm		R.A. PASS-THRU POWER CONTACT			
C	v60188	CSC		2/02/96			xxx ±.005/.13						
D	v01818	JWS		7/17/00	0°±2'		xxxx ±.0020/.050	scale 1:1	dwg no 91877 sheet 1 of 1 size A.				
E	v02928	JWS		12/12/00	dr	STU STONER	11/01/91						
F	v04-1176	TAB		12/14/04	enrg	R. DOUTRICH	11/01/91						
G	M06-0156	MHT		4/13/06	chr	STU STONER	11/01/91						
H	M06-0286	MNR		7/27/06	appd	STU STONER	11/01/91			type Product Customer Drawing			
sheet		revision		H									
index		sheet		1									

form: A3