

PRODUCT NUMBER
91615-YXXZWLF

WHEN NEEDED, SUFFIX LETTER "LF"
INDICATES THE PRODUCT IS RoHS
COMPATIBLE, SEE NOTE 7

OPTIONAL LETTER SEE SHEET 2
N: PRODUCT WITH TYPE MARKING ON CONNECTOR

OPTIONAL LETTER

A: PRODUCT WITH PICK UP CAP PACKED IN
TAPE & REEL SEE TA856.

B: PRODUCT WITH PICK UP CAP PACKED IN TUBE.

NUMBER OF POSITIONS PER ROW: 03 UP TO 30.
MORE THAN 30 POSITIONS ON SPECIAL REQUEST.

PLATING CODE

3= 0.76µm GOLD ON CONTACT AREA.

3.81µm TIN-LEAD ON TAIL.

4= 5µm TIN-LEAD ON CONTACT AREA.

3.81µm TIN-LEAD ON TAIL.

WHEN SUFFIX "LF" IS REQUIRED, 2µm MIN MATTE
TIN OVER 1.27 MIN Ni IS SUPPLIED INSTEAD OF SnPb.

NOTES:

- HOUSING MAT'L: THERMOPLASTIC GLASS FILLED
FLAME RETARDANT PER UL 94 V-0 COLOR: GREY.
- TERMINAL MATERIAL: PHOSPHOR BRONZE.
- PACKAGING:
3 UP TO 4 POSITIONS PRODUCT PACKED IN PLASTIC BOX.
5 UP TO 30 POSITIONS PRODUCT PACKED IN TUBE.
WHOLE 91615-303B PRODUCT PACKED IN TUBE.
- TO DETERMINE DIMENSIONS:
N = NUMBER OF POSITIONS PER ROW
EXAMPLE: 8 POS: $((N+2) \times 2.54) - 0.08 = 25.32$ mm.
- RECOMMENDED IR PROFILE PER TA842.
- Ø2.65 MINI FOR PICK & PLACE ASSEMBLY(=0 INSERTION FORCE).
- RoHS COMPATIBLE PRODUCT SPECIFICATIONS

a - PLATING:

- "LF" MEANS THE PRODUCT IS LEAD-FREE,
2µm MINIMUM MATTE TIN OVER 1.27µm
MINIMUM NICKEL UNDERPLATE.

b - MANUFACTURING PROCESS COMPATIBILITY

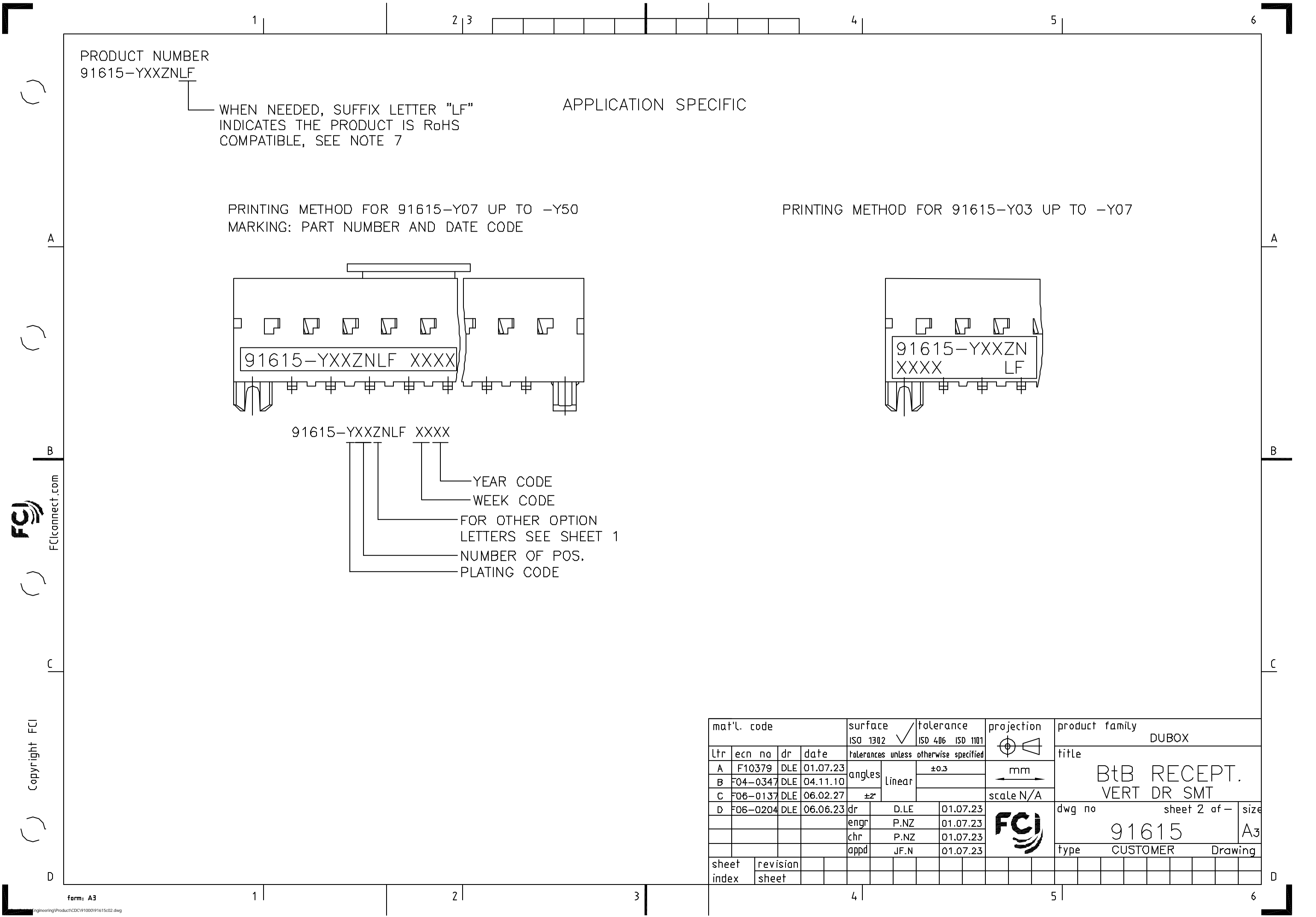
- THE HOUSING WILL WITHSTAND EXPOSURE TO
260°C PEAK TEMPERATURE FOR 30 SECONDS
MAX IN A CONVECTION, INFRA-RED OR VAPOR
PHASE OR REFLOW OVEN.

c - LABELING:

- MEETS PACKAGING SPECS AS PER GS-14-920

d - LEGAL STATEMENT: SEE GS-22-008

mat'L. code				surface		tolerance		projection	product family		
SEE NOTES				ISO 1302	ISO 406	ISO 1101	ISO 1101		DUBOX		
ltr	ecn no	dr	date	tolerances unless otherwise specified		tolerances unless otherwise specified		mm	title		
AB	F04-0347	DLE	04.11.10	angles	linear	±0.3	±0.3				
AC	F06-0137	DLE	06.02.27	±2°				scale 5:1	BtB RECEPT. VERT DR SMT		
AD	F06-0204	DLE	06.06.23								
AE	F07-0165	DLE	07.03.30	dr	P. NIZZI	95.11.17		FCI	dwg no		
				enr	P.NZ	01.07.23					
				chr	P.NZ	01.07.23					
				appd	JF.N	01.07.23			sheet 1 of 3		
sheet	revision	AE	D	B					91615		
index	sheet	1	2	3					A3		
									type		
									CUSTOMER Drawing		



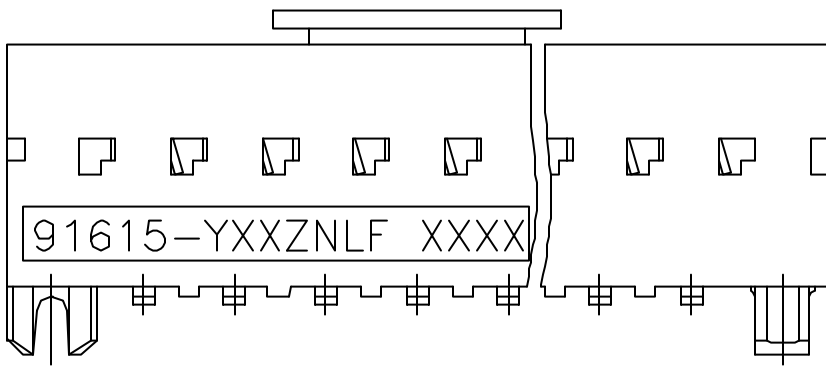
PRODUCT NUMBER
91615-YXXZNLF

WHEN NEEDED, SUFFIX LETTER "LF"
INDICATES THE PRODUCT IS RoHS
COMPATIBLE, SEE NOTE 7

APPLICATION SPECIFIC

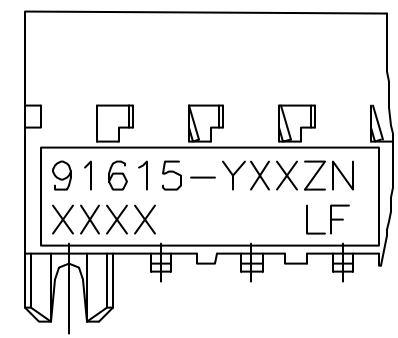
PRINTING METHOD FOR 91615-Y07 UP TO -Y50
MARKING: PART NUMBER AND DATE CODE


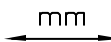

PRINTING METHOD FOR 91615-Y03 UP TO -Y07



91615-YXXZNLF XXXX

- YEAR CODE
- WEEK CODE
- FOR OTHER OPTION LETTERS SEE SHEET 1
- NUMBER OF POS.
- PLATING CODE



mat'l. code				surface ISO 1302 <input checked="" type="checkbox"/>				tolerance ISO 406 ISO 1101				projection 		product family DUBOX																																																																																																																																																																																																																																																																																																																																																																																																																																																																																																																																																																																																																					
ltr	ecn no		dr	date		tolerances unless otherwise specified						title BtB RECEPT. VERT DR SMT																																																																																																																																																																																																																																																																																																																																																																																																																																																																																																																																																																																																																							
A	F10379		DLE	01.07.23		angles Linear		±0.3																																																																																																																																																																																																																																																																																																																																																																																																																																																																																																																																																																																																																											
B	F04-0347		DLE	04.11.10																																																																																																																																																																																																																																																																																																																																																																																																																																																																																																																																																																																																																															
C	F06-0137		DLE	06.02.27		±2°						scale N/A																																																																																																																																																																																																																																																																																																																																																																																																																																																																																																																																																																																																																							
D	F06-0204		DLE	06.06.23		dr	D.LE			01.07.23					dwg no										sheet 2 of —			size																																																																																																																																																																																																																																																																																																																																																																																																																																																																																																																																																																																																							
						enrg	P.NZ			01.07.23					91615										A3																																																																																																																																																																																																																																																																																																																																																																																																																																																																																																																																																																																																										
						chr	P.NZ			01.07.23																																																																																																																																																																																																																																																																																																																																																																																																																																																																																																																																																																																																																									
						appd	JF.N			01.07.23																																																																																																																																																																																																																																																																																																																																																																																																																																																																																																																																																																																																																									
sheet index		revision sheet																																																																																																																																																																																																																																																																																																																																																																																																																																																																																																																																																																																																																																	

A

B

[

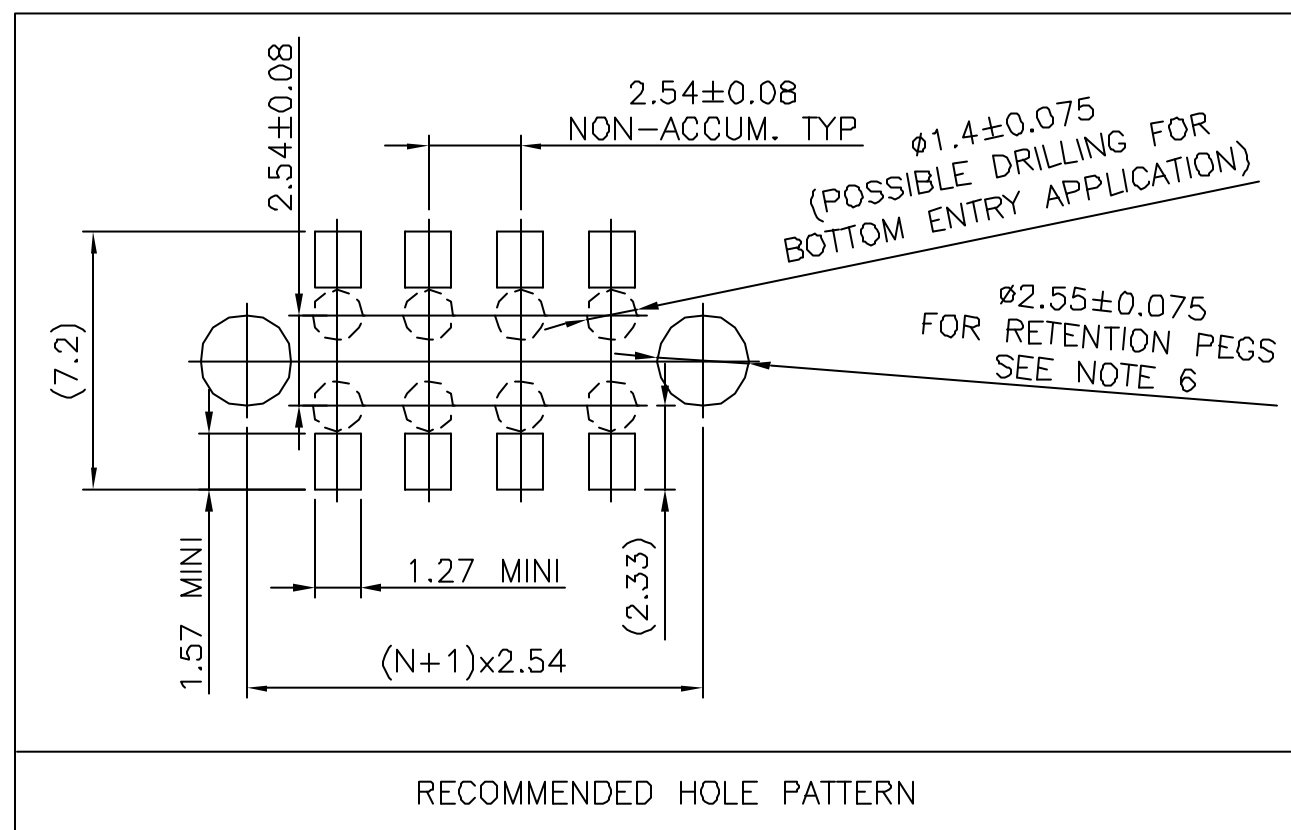
D

1

E

1

1

[illegible]