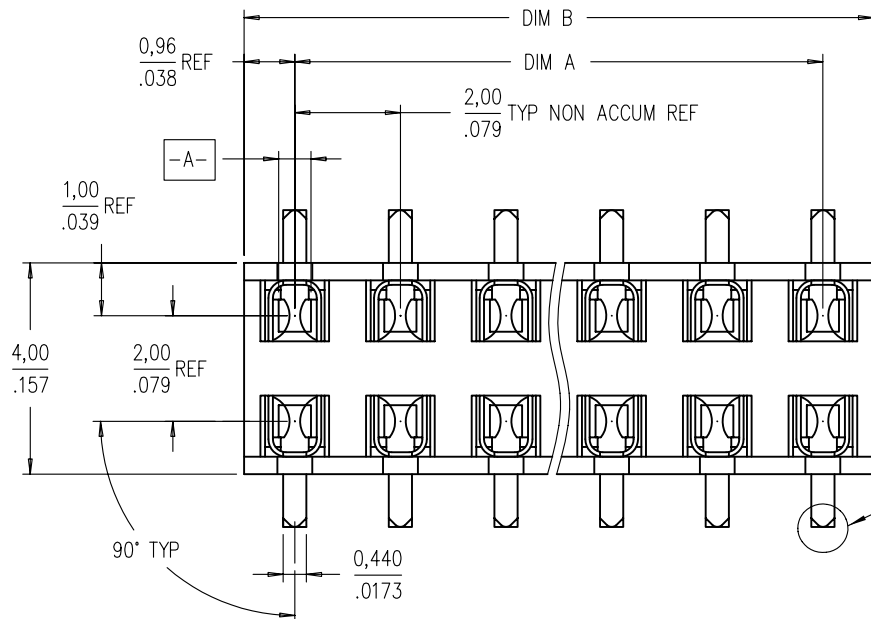


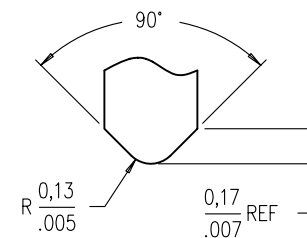
Tous droits strictement reserves. Reproduction ou communication a des tiers interdite sous quelque forme que ce soit sans autorisation ecrite du proprietaire. Propriete de c FCI. Droits de reproduction FCI.

All rights strictly reserved. Reproduction or issue to third parties in any form whatever is not permitted without written authority from the proprietor. Property of FCI. Copyright FCI.

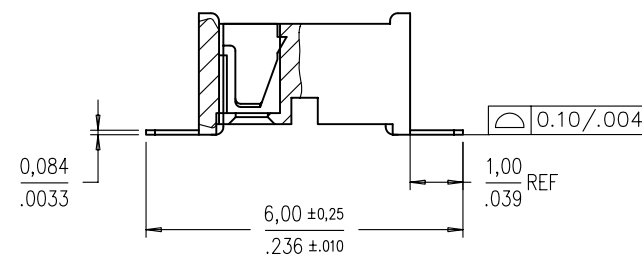
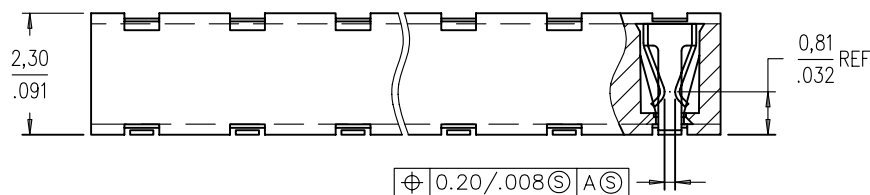
FCI




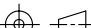

DETAIL A
NOTE 4



DETAIL A



CONFIDENTIAL

mat'l. code				tolerances unless otherwise specified				CUSTOMER COPY		<div> www.fciconnect.com</div>		
ltr	ecn no	dr	date	linear	X.X±0.3/.XX±.01			projection 	title LOW PROFILE VCC BOTTOM ENTRY SMT 2,3 ASSY	product family LPVCC		code —
P	S50184	BSL	9/19/95		X.XX±0.13/.XXX±.005							
R	S60082	BSL	3/26/96	angles	X.XXX±0.051/.XXX±.0020			MM/INCH 	size	dwg no 91596	sheet 1 of 2	
S	S70073	BSL	3/25/97		ANGLES ±2°							
T	V94400	BSL	12/1/99	dr	BS LOW	1/6/00		scale 10:1	A			
U	S05-0059	KBM	4/20/05	enrg	BS LOW	1/6/00						
				chr	KB MAH	4/20/05						
				appd	JOEY NG	4/20/05						
sheet index		revision sheet		U	U							
				1	2							

cage code
22526

STATUS: Released Printed: Feb 04, 2007

ACAD

PDM: Rev:U

PRODUCT NO	POSITIONS	DIM. A	DIM. B
91596-X04	2 X 2	2,00/,079	3,92/,154
-X06	2 X 3	4,00/,158	5,92/,233
-X08	2 X 4	6,00/,236	7,92/,312
-X10	2 X 5	8,00/,315	9,92/,391
-X12	2 X 6	10,00/,394	11,92/,469
-X14	2 X 7	12,00/,472	13,92/,548
-X16	2 X 8	14,00/,551	15,92/,627
-X18	2 X 9	16,00/,630	17,92/,706
-X20	2 X 10	18,00/,709	19,92/,784
-X22	2 X 11	20,00/,787	21,92/,863
-X24	2 X 12	22,00/,866	23,92/,942
-X26	2 X 13	24,00/,945	25,92/1,020
-X28	2 X 14	26,00/1,024	27,92/1,099
-X30	2 X 15	28,00/1,102	29,92/1,178

NOTES :

- HOUSING MAT'L : HIGH TEMP PLASTIC.
- TERMINAL MAT'L : BeCu.
- TERMINAL RETENTION 0,5 Kg/1,1 Lbs.
- 'V' CUT OPTIONAL - MANUFACTURING PROCESS OPTION.
- PRODUCT DESCRIPTION CODE :

XXXXX-X XXLF
 LEAD FREE (b)(9)
 TOTAL POSITIONS
 PLATING AT CONTACT AREA
 BASE NUMBER

6 PACKAGING :

- XXXXX-XXX --- STD PACKAGING IN TUBE.
- XXXXX-XXXTR --- TAPE AND REEL (CONDUCTIVE) PACKAGING WITH PICK-UP CAP (SEE FIG 1).
- XXXXX-XXXTRN --- TAPE AND REEL (CONDUCTIVE) PACKAGING WITHOUT PICK-UP CAP.
- XXXXX-XXXCR --- TAPE AND REEL (NON-CONDUCTIVE) PACKAGING WITH PICK-UP CAP (SEE FIG 1).
- XXXXX-XXXCRN --- TAPE AND REEL (NON-CONDUCTIVE) PACKAGING WITHOUT PICK-UP CAP.

⑦ SOLDER TAIL PLATING:

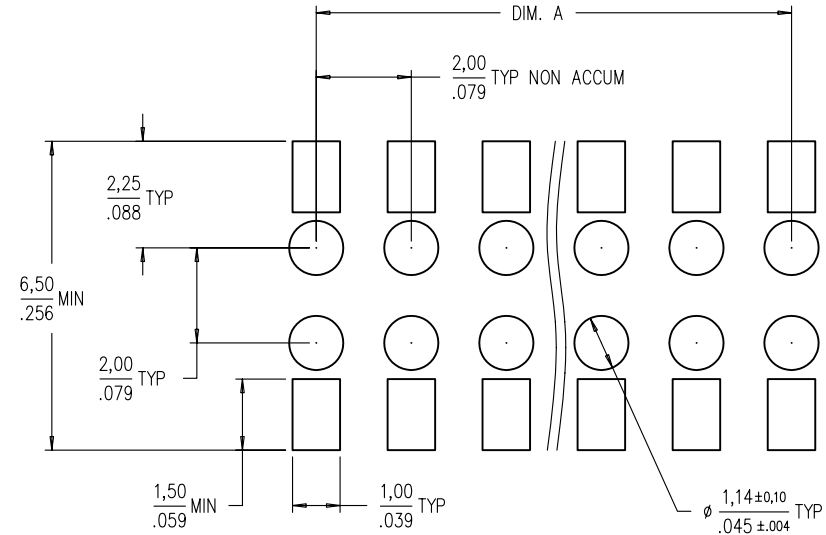
- SOLDERTAIL OF P/N:91596-XXX IS TIN/LEAD PLATED.
- SOLDERTAIL OF P/N:91596-XXXLF IS 100% MATTE TIN PLATED.

8 THE HOUSING WILL WITHSTAND EXPOSURE TO 255° C PEAK TEMPERATURE FOR 10 SECONDS IN A CONVECTION, INFRA-RED OR VAPOR PHASE REFLOW OVEN.

⑨ THIS PRODUCT MEETS EUROPEAN UNION DIRECTIVES AND AND OTHER COUNTRY REGULATIONS AS DESCRIBED IN GS-22-008.

CONTACT AREA PLATING OPTIONS

- 0 = 0,20um/8u" Au CONTACT AREA.
 1 = 0,76um/30u" Au CONTACT AREA.
 3 = 0,38um/15u" Au CONTACT AREA.



RECOMMENDED PAD LAYOUT

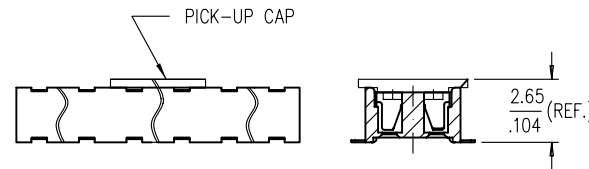
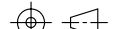


FIG. 1
NOTE 6 (b) & (d)

CONFIDENTIAL

mat'l. code				tolerances unless otherwise specified				CUSTOMER COPY		<div><div><div>A</div><div>FCI</div></div><div>www.fciconnect.com</div></div>			
ltr	ecn no	dr	date	linear	X.X±0.3/.XX±.01				projection	title			
U					X.XX±0.13/.XXX±.005								
				angles	X.XXX±0.051/.XXX±.0020					LOW PROFILE VCC BOTTOM ENTRY SMT 2,3 ASSY			
					ANGLES ±2°								
				dr	BS LOW	1/6/00		MM/INCH	product family		LPVCC		code
				enrg	BS LOW	1/6/00			size		dwg no		—
				chr	KB MAH	4/20/05		scale	A		91596		sheet
				appd	JOEY NG	4/20/05							2 of 2
sheet index	revision sheet												