

MUSTANG PUSHBUTTON SWITCHES

8Y

FEATURES

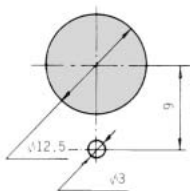
The 8Y Mustang Push Button Switch has a miniature body with a large dia. actuator. It is ideal where a large actuator is required for front panel balance while the space is limited inside the equipment.

SPECIFICATIONS

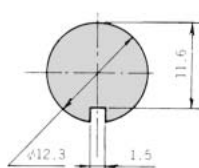
Rating	Max. rating	6A 125VAC (Resistive)	
	Min. rating	10mA 5VAC/DC	
Initial contact resistance	10mΩ max. (1A 2~4VDC)		
Initial dielectric strength	1,000VAC 1 minute		
Initial Insulation resistance	1,000MΩ min. (500VDC)		
Electrical life	Alternate type	40,000 operations	
	Momentary type	25,000 operations	
Operating temperature range	-20°C ~ +85°C		
Storage temperature range	-40°C ~ +85°C		

PANEL CUT - OUT DIMENSIONS

Panel thickness : 5 mm max.

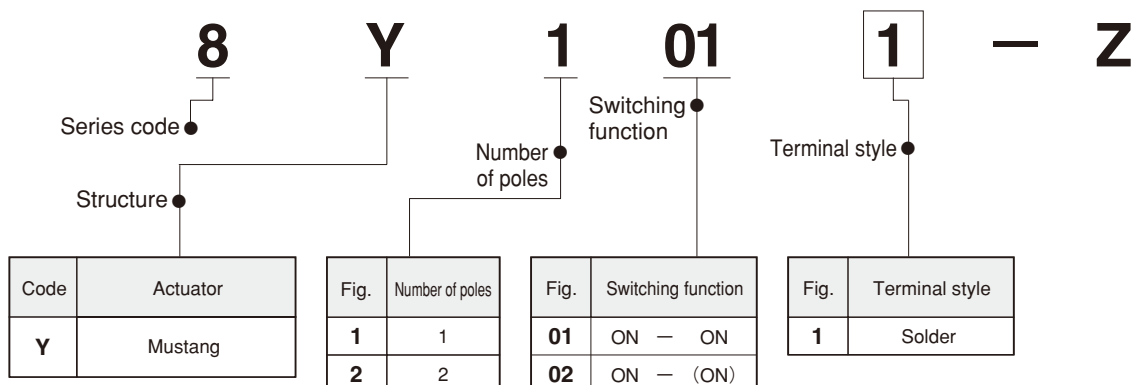


With Locking Ring



Without Locking Ring

PART NUMBERING



※ Please contact us if you can't find your preferable combination in the table of part numbers.

■ Specifications are subject to change without notice. Specifications in this catalog are for reference. The formal specification sheets will be submitted upon request.

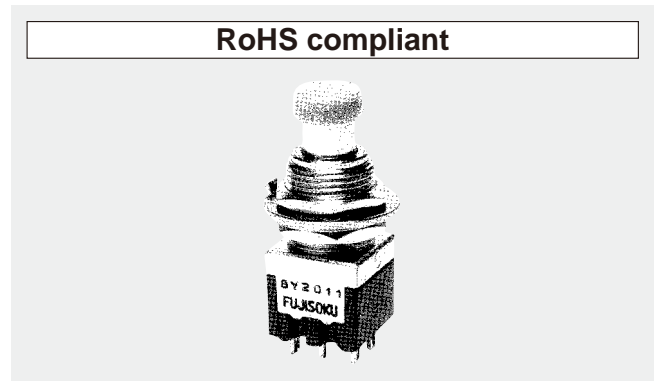
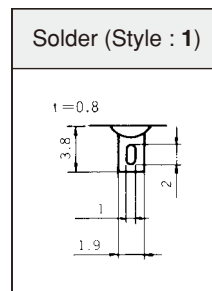


TABLE OF PART NUMBERS

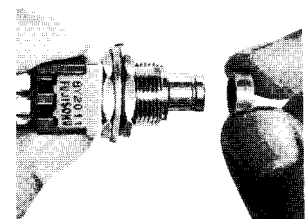
Terminal Style	Number of poles		P/C terminal	Right angle
	Switching function			
S/D (Solder)	ON - ON		8Y1011-Z	8Y2011-Z
	ON - (ON)		8Y1021-Z	8Y2021-Z

TERMINAL STYLE



COLOR CAP MOUNTING

Place the cap on the switch plunger and push on.



8Y MUSTANG PUSHBUTTON SWITCHES

STANDARD ACCESSORIES

Hex Nut	Lockwasher	Locking Ring
140008010243	140008030055	140008020067
Nickel plated	Zinc plated	Zinc plated

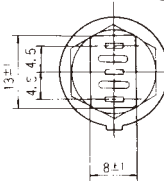
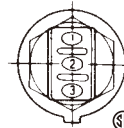
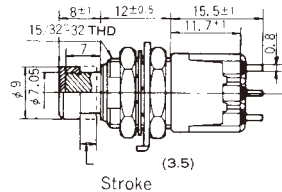
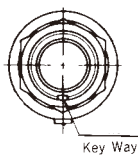
OPTIONAL ACCESSORIES

Color Cap		
Dimensions	Color	Part No.
	White	140000470023
	Red	140000470052
	Black	140000470051
	Gray	140000470057
	Green	140000470054
	Blue	140000470056
	Yellow	140000470053

●Specify the color cap by partnumber if color cap is desired.

OUTLINE DIMENSIONS

SPDT



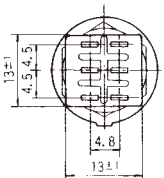
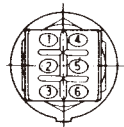
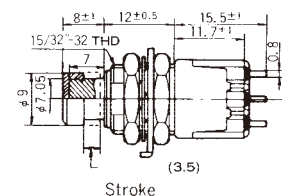
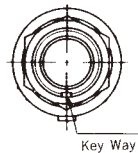
Switching function		
Part No.		
※ 8Y1011-Z	ON	ON
8Y1021-Z	ON	(ON)
Connecting terminals	2-3	2-1

※Circuit changes whenever pushed.

Terminal number not shown on box.

S/D

DPDT



Switching function		
Part No.		
※ 8Y2011-Z	ON	ON
8Y2021-Z	ON	(ON)
Connecting terminals	2-3 5-6	2-1 5-4

※Circuit changes whenever pushed.

※(ON) : Momentary

Terminal number not shown on box.

S/D

EIGHT SWITCH SERIES

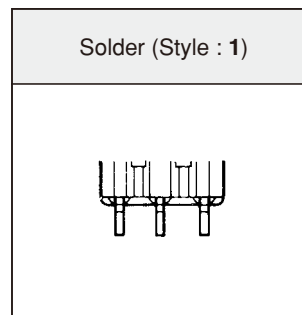
■ PANEL CUT-OUT DIMENSIONS

Series	8N		8P	8Y	
Panel thickness	1.5 mm Max.	2.5 mm Max.	4.5 mm Max.	5 mm Max.	6 mm Max.
Dimensions					
	With Locking Ring	Without Locking Ring		With Locking Ring	Without Locking Ring

■ PC HOLE LAYOUTS

Series	8N · 8P
Dimensions	<p>1-Pole 2-Pole</p>

■ TERMINAL STYLES



■ PRECAUTIONS (8N · 8P · 8Y)

1. Soldering

(1) Hand soldering

Device : Solder iron

① 420 °C Max. 3 sec. Max.

(2) Auto soldering

② 275 °C ± 10 °C 5 sec. Max.

Applicable to pc terminals only. Right-angle and wire wrap terminals : Don't meet autosoldering specifications. Hand soldering should be employed after other components have been autosoldered.

2. Flux Cleaning

(1) Solvent : Fluorine or Alcohol type.

(2) When PC board cleaning is required, brushing on the soldering face shall be provided so that the 8 switch series is not exposed to the cleaning solution.

■ OPERATING FREQUENCY

When the switch is to be operated at 25mA 20VDC or lower rating, please operate it at least once or more often a month.

■ PACKAGING SPECIFICATION

