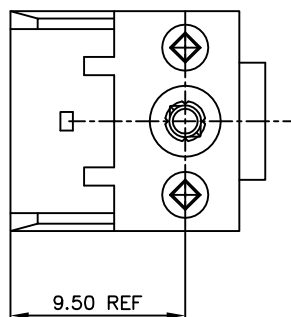
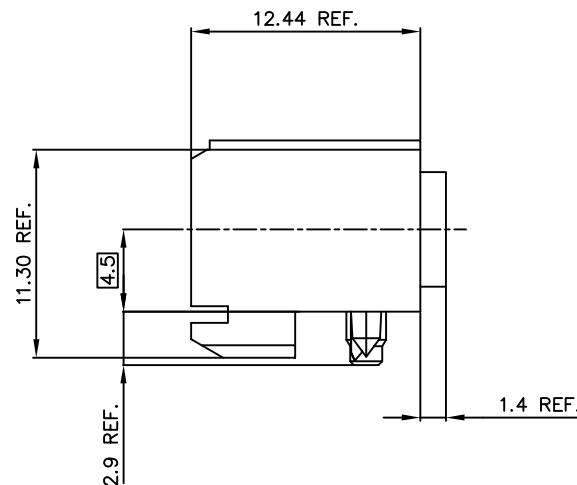
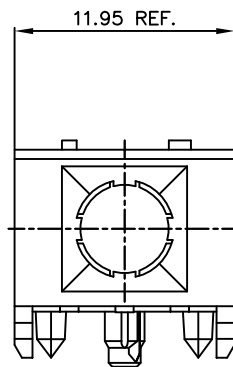
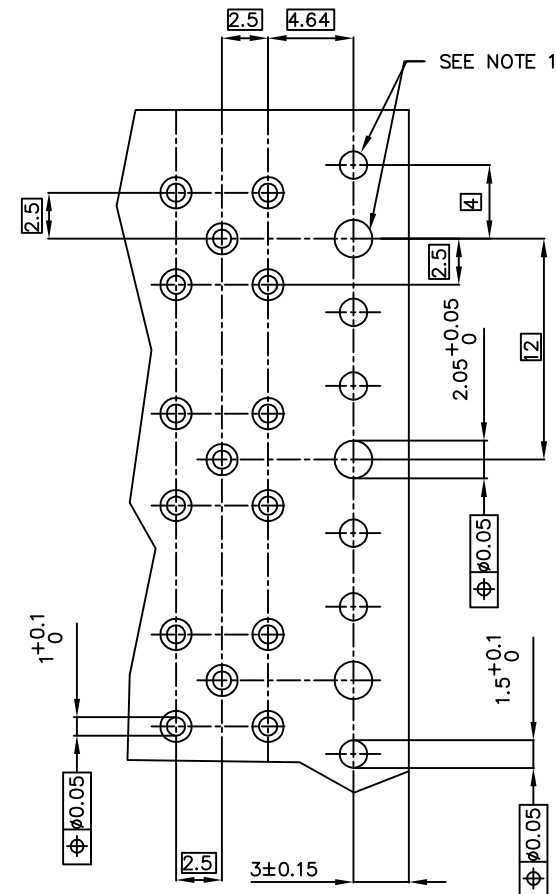
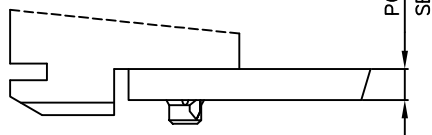


PRODUCT #	PCB THICKNES
89092-101LF	1.6 & 2.4



PRODUCT AFTER PC BOARD APPLICATION.



RECOMMENDED HOLE PATTERN,
COMPONENT SIDE.

NOTES:

- 1 INDICATED HOLES ARE UNPLATED.
- 2 MATERIAL: LIQUID CRYSTAL POLYMER 30% GLASS
FLAME RETARDANT ACC. UL 94-V0
COLOR NATURAL.
- 5 THIS PRODUCT WITH "LF" SUFFIX MEETS EUROPEAN
UNIONDIRECTIVES AND OTHER COUNTRY REGULATIONS AS
DESCRIBED IN GS -22-008.
- 6 THE HOUSING WILL WITHSTAND EXPOSURE TO 260 DEGREE PEAK TEMPERATURE
FOR 20 SECONDS IN WAVE SOLDER APPLICATION WITH A 1.6 MM MINIMUM THICK
CIRCUIT BOARD.

mat'l. code SEE NOTE 2				tolerances unless otherwise specified		CUSTOMER COPY		ELECTRONICS	
ltr	ecr	no	dr	date	linear	projection	title	product family	code
A	H40355	DOB	940616				RA FEMALE HSG		
B	H50047	RVI	950119				HYBRID 12MM PRESS PEG		
C	H90478	DOB	990816		angles				
D	p005-0383	Clu	051011	dr	H.Bouwknegt	931206	mm	product family	code
E	p005-0406	Clu	051027	eng	D.Andrews	931206	scale	size dwg no	213
				chr	D.Andrews	950119	5:1	A2	89092
				app	H.Coolijmans	950119			1 of 1
sheet	revision	E							
index	sheet	1							

PDM: Rev E

STATUS: Released

Printed: Feb 06, 2008