

1

2

3

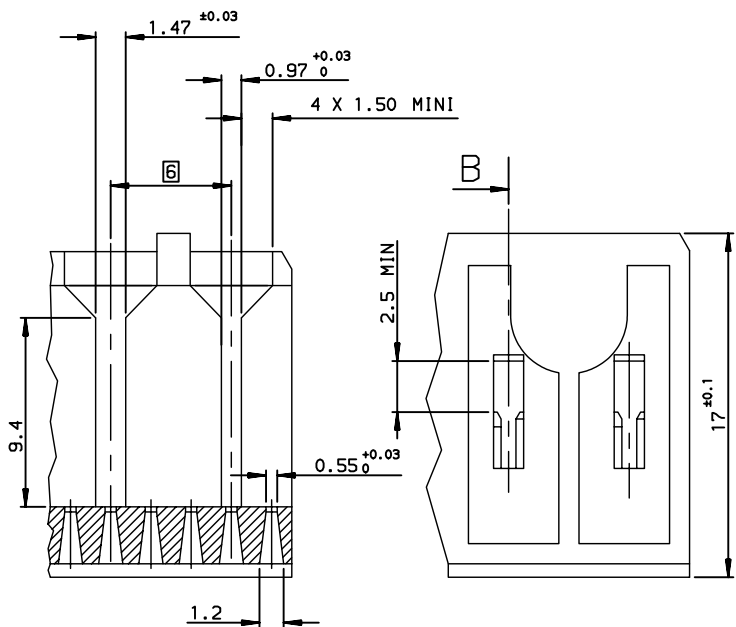
4

A

B

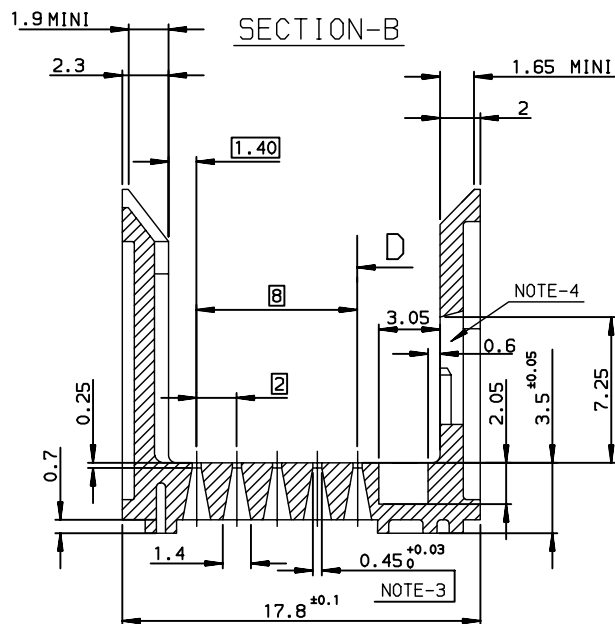
C

D

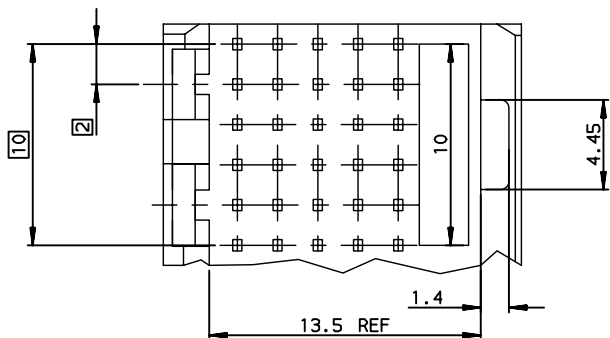


SECTION-D

NB OF WAY	PART NUMBERS	COMMENTS
30	HM13216LF OR 89055-111LF	RoHS COMPATBLE VERSION
60	HM13217LF OR 89055-112LF	RoHS COMPATBLE VERSION
120	HM13218LF OR 89055-113LF	RoHS COMPATBLE VERSION
240	HM13219LF OR 89055-114LF	RoHS COMPATBLE VERSION



SECTION-B

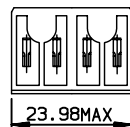


(REDUCED SCALE SHEET)

(30 WAYS)

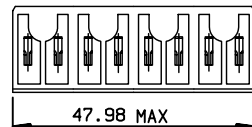
11.98 MAX

(60 WAYS)

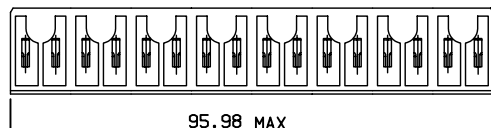


23.98 MAX

(120 WAYS)



47.98 MAX



95.98 MAX

(240 WAYS)

European Views

NOTE-1: OTHER DIMENSIONS IN ACCORDANCE WITH IEC-48B-(S.296) SPECIFICATION

NOTE-2: MATERIAL LCP NATURAL COLOUR

NOTE-3: FORCE FIT CAVITIES FOR RETENTION WITH REAR PLUG-UP CONTACT PART

NOTE-4: CAVITY FOR LATCHING AND CODING

NOTE:RoHS INFORMATIONS

- The "LF" product meets European union Directives and other country regulations as described in GS-22-008.
- The product is not intended to be exposed to a manufacturing solder process.
- Packaging spec: see GS-14-920.

rev	ecn no	dr	date
L	-	TAR	2005/10/01
M	LS06-0114	LGO	2006/08/14
N	LS07-0249	JT	2007/10/08
-	-	-	-
-	-	-	-
-	-	-	-
-	-	-	-

www.fciconnect.com		surface ISO 1302	tolerance std ISO 406 ISO 1101	projection mm	mm
		TOLERANCES UNLESS OTHERWISE SPECIFIED			
Dr	PERRICHOT	2002/08/21	ANGULAR	0.X	±0.1
Eng	TARON	2002/08/21	LINEAR	0.XX	±0.1
Chr	LEGARE	2002/08/21	0.XX' ±2'	0.XXX	±0.1
Appr	LEGARE	2002/08/21	Product family	--	Spec ref --
FCI		title WIDE BODY STAND-OFF 3.5mm		dwg no 89055	Rev. N
		catalog no		CUSTOMER sheet 1 of 1	

REV F - 2006-04-17

1

2

3

4

A

B

C

D