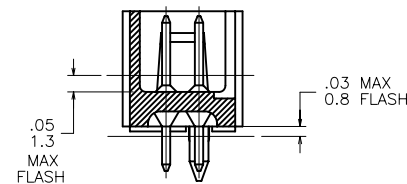
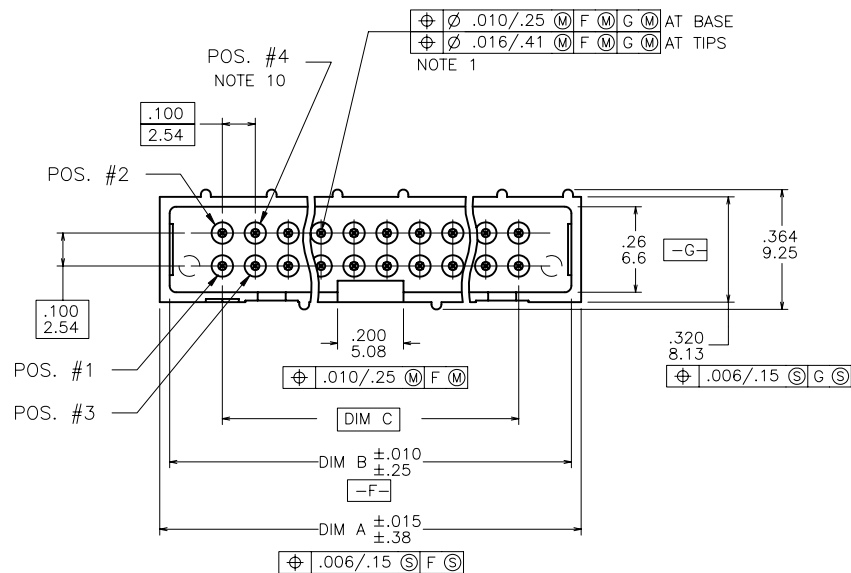
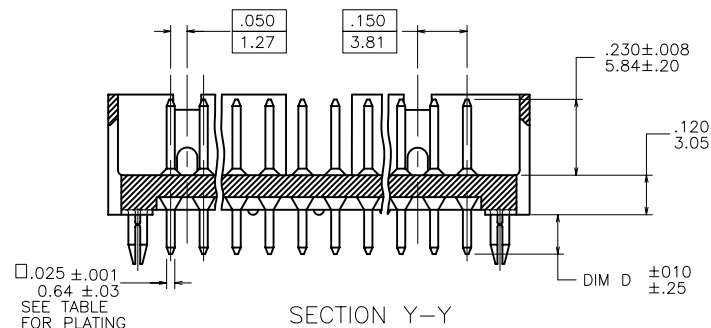
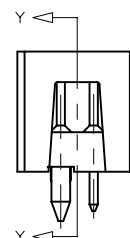
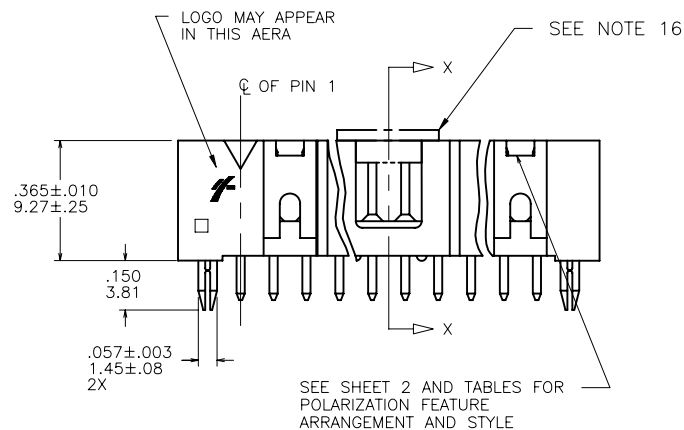


Tous droits strictement reserves. Reproduction ou communication a des tiers
interdite sous quelque forme que ce soit sans autorisation écrite du propriétaire.
Propriete de c FCI. Droits de reproduction FCI.

All rights strictly reserved. Reproduction or issue to third parties in any
form whatever is not permitted without written authority from the proprietor.
Property of FCI. Copyright FCI.



SECTION X-X



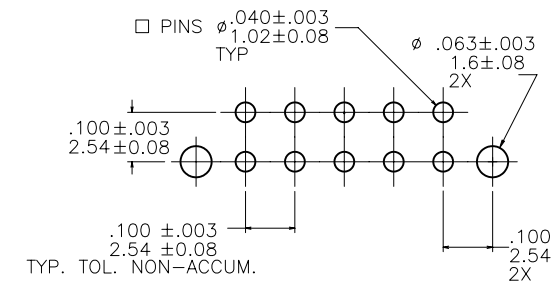
SECTION Y-Y

mat'l. code NOTE 2 & 5				tolerances unless otherwise specified		CUSTOMER COPY	Electronics www.fciconnect.com	
litr	ecn no	dr	date	linear	.XX ±.01/.X±.3			
R	V61660	EPK	11/4/96	linear	.XXX ±.005/.XX±.13	projection 	title HEADER, QUICKIE SLIMLINE, VERTICAL, 4 WALL HTP	product family HEADER
S	V90594	EPK	3/1/99		XXXX ±.0020/.XXX±.051			
T	V91334	LSS	6/3/99	angles	0° ±2°	INCH/MM scale 1:1	size A	code —
U	V00284	DAI	1/25/00	dr	M.CLOUSER 1/10/90			
V	V00526	DAI	2/10/00	enr	M.SMYK 7/10/90	sheet 1 of 4	88873	—
W	V00723	DAI	3/1/00	chr	M.SMYK 10/10/90			
Z	N05-0151	ZC	6/10/05	appd	M.SMYK 10/10/90	sheet index	cage code 2626	1 of 4
	revision	Z	Z	Z	Z			
	sheet	1	2	3	4			

KEY FOR PLATING AND OPTIONS				TAIL LENGTH
X	TERMINAL PLATING	RETENTION NOTE 6	ORIENTATION POST NOTE 7	DIM D
-0XX(LF)	15u" / .38u GXT	NO	YES	.120/3.05
-1XX(LF)	15u" / .38u GXT	NO	NO	.120/3.05
-2XX(LF)	30u" / .76u GXT	NO	NO	.445/11.30
-3XX(LF)	15u" / .38u GXT	YES	NO	.120/3.05
-4XX(LF)	30u" / .76u GXT	NO	YES	.120/3.05
-5XX(LF)	30u" / .76u GXT	YES	NO	.120/3.05
-6XX(LF)	30u" / .76u GXT	NO	NO	.120/3.05
-7XX(LF)	30u" / .76u GXT	NO	NO	.105/2.67
-8XX(LF)	30u" / .76u GXT	NO	NO	.085/2.16
-9XX(LF)	15u" / .38u GXT DUPLEX	NO	YES	.105/2.67

NOTES:

- ① SAME PIN POSITION TOLERANCE APPLIES TO BOTH ENDS OF EACH TERMINAL.
- ② MOLDING MAT'L: GLASS-FILLED POLYESTER PCT, FLAME RETARDANT PER UL-94V-0, COLOR: BEIGE
3. 1° MAX DRAFT PERMISSIBLE ON ALL SURFACES.
4. 4 POUNDS/1.8 KILOGRAMS MIN TERMINAL PULL-OUT FORCE.
- ⑤ TERMINAL MAT'L: PHOSPHOR BRONZE.
- ⑥ 15 POUNDS / 6.8 KILOGRAMS MAX INSERTION FORCE AND .5 POUNDS/2.26 KILOGRAMS MIN RETENTION FORCE USING .062/1.57 THICK CIRCUIT BOARDS AND RECOMMENDED HOLE PATTERN.
- ⑦ ORIENTATION POSTS ARE UNAVAILABLE WITH RETENTION PINS. RETENTION PINS ARE UNAVAILABLE WITH ORIENTATION POSTS.
8. P/N'S WITH "T" BEHIND THEM REQUIRE TUBE PACKAGING PER BUS-14-112.
- ⑨ MAY BE ORDERED WITH G-PAX PACKAGING BY ADDING "G" TO THE DASH NUMBER PER GES-14-314.
- ⑩ POSITION #4 POLARIZED ON -206.
- ⑪ POSITION #20 POLARIZED ON -061.
- ⑫ POSITION #5 POLARIZED ON -062.
- ⑬ POSITION #25 POLARIZED ON -363.
- ⑭ POSITION #3 POLARIZED ON -366
- ⑮ SOLDER DIP PROCESS ACCEPTABLE (TIN-LEAD TAILS)
- ⑯ P/N'S WITH "V" BEHIND THEM REQUIRE PICK-UP CAPS.
- ⑰ "D" DENOTES CUSTOMER SPECIAL.
18. THE HOUSING OF XXXX-XYLF WILL WITHSTAND EXPOSURE TO 260°C PEAK TEMPERATURE FOR 10 SECONDS IN A WAVE SOLDER PROCESS.
19. 88873-***LF IS JUST A LEAD FREE PRODUCT.

RECOMMENDED HOLE PATTERN
SCALE 3/1

* NOTE 15

2 X 4
STYLE A2 X 7
STYLE C2 X 5
STYLE B2 X 8 THUR 2 X 30
STYLE D

mat'l. code				tolerances unless otherwise specified		CUSTOMER COPY		 www.fciconnect.com	
ltr	ecn no	dr	date	linear	.XX ±.01/.X±.3	projection		title	
Z					.XXX ±.005/.XX±.13			HEADER, QUICKIE SLIMLINE, VERTICAL, 4 WALL HTP	
					XXXX ±.0020/.XXX±.051				
				angles	0° ±2°			product family	HEADER
				dr	M.CLOUSER	1/4/93		code	-
				enr	M.SMYK	1/4/93		size	dwg no
				chr	M.SMYK	1/4/93			
				appd	M.SMYK	1/4/93			
sheet index		revision sheet				scale 1:1		A 88873	

cage code

Tous droits strictement reserves. Reproduction ou communication a des tiers
Interdite sous quelque forme que ce soit sans autorisation écrite du propriétaire.
Propriete de c FCI. Droits de reproduction FCI.

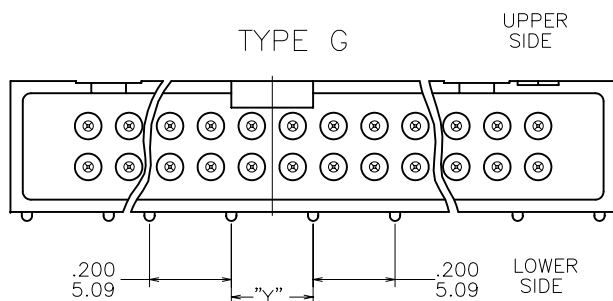


All rights strictly reserved. Reproduction or issue to third parties in any
form whatever is not permitted without written authority from the proprietor.
Property of FCI. Copyright FCI.

SIZE	TYPE	DIM "Y" REF	NO. OF POS. AT UPPER SIDE	NO. OF POS. AT LOWER SIDE
2 X 2	G	.300/7.64	0	2
2 X 3	G	.100/2.54	0	4
2 X 4	G	.200/5.09	0	4
2 X 5	G	.300/7.64	0	4
2 X 6	G	.200/5.09	0	4
2 X 7	G	.100/2.54	0	6
2 X 8	G	.200/5.09	0	6
2 X 10	F	—	2	7
2 X 12	E	.200/5.09	2	8
2 X 13	E	.300/7.64	3	8
2 X 15	E	.100/2.54	4	10
2 X 17	E	.300/7.64	5	10
2 X 18	F	—	6	11
2 X 20	E	.200/5.09	7	12
2 X 22	F	—	8	13
2 X 25	E	.300/7.64	9	14
2 X 30	F	—	12	17

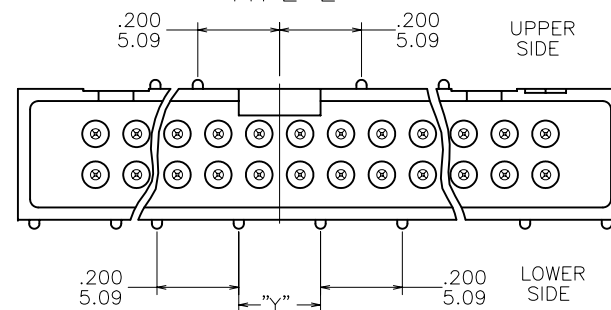
2X2 THROUGH 2X8

TYPE G

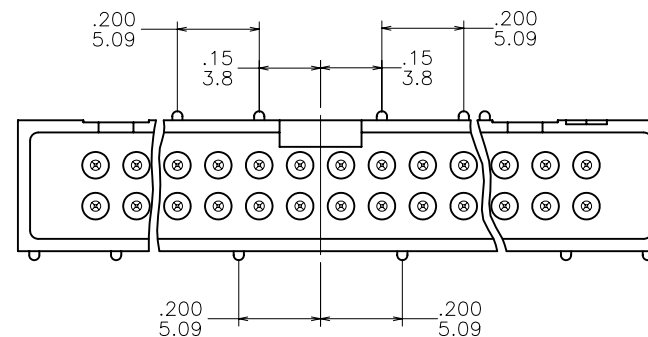


2X10 THROUGH 2X30

TYPE E



TYPE F



mat'l. code				tolerances unless otherwise specified		CUSTOMER COPY		FCI Electronics www.fciconnect.com			
ltr	ecn no	dr	date	linear	.XX ±.01/.X±.13	projection	title	product family			
Z					.XXX ±.005/.XX±.13			INCH/MM	HEADER	code	
					XXXX ±.0020/.XXX±.051					—	
				angles	0° ±2°	scale	A	size			
				dr	M.CLOUSER 1/4/93			dwg no			
				enr	M.SMYK 1/4/93			88873			
				chr	M.SMYK 1/4/93			sheet			
				appd	M.SMYK 1/4/93	1:1		3 of			
sheet	revision										
index	sheet										

Tous droits strictement reserves. Reproduction ou communication a des tiers
Interdite sous quelque forme que ce soit sans autorisation ecrite du proprietaire.
Propriete de c FCI. Droits de reproduction FCI.



All rights strictly reserved. Reproduction or issue to third parties in any
form whatever is not permitted without written authority from the proprietor.
Property of FCI. Copyright FCI.

PRODUCT NUMBER	DIM A	DIM B	DIM C	STYLE	SIZE
88873-X04 (LF)	.480/12.19	.420/10.67	.100/2.54	A	2 X 2
-X06 (LF)	.580/14.73	.520/13.21	.200/5.08	A	2 X 3
-X06D (LF)	.580/14.73	.520/13.21	.200/5.08	A	2 X 3
-X08 (LF)	.680/17.27	.620/15.75	.300/7.62	A	2 X 4
-X08D (LF)	.680/17.27	.620/15.75	.300/7.62	A	2 X 4
-X09 (LF)	.780/19.81	.720/18.29	.400/10.16	A	2 X 5
-X10 (LF)	.780/19.81	.720/18.29	.400/10.16	B	2 X 5
-X12 (LF)	.880/22.35	.820/20.83	.500/12.70	A	2 X 6
-X14 (LF)	.980/24.90	.920/23.37	.600/15.24	C	2 X 7
-X16 (LF)	1.080/27.90	1.020/25.91	.700/17.78	D	2 X 8
-X20 (LF)	1.280/32.51	1.220/30.99	.900/22.86		2 X 10
-X24 (LF)	1.480/37.59	1.420/36.07	1.100/27.94		2 X 12
-X26 (LF)	1.580/40.13	1.520/38.61	1.200/30.48		2 X 13
-X30 (LF)	1.780/45.21	1.720/43.69	1.400/35.56		2 X 15
-X34 (LF)	1.980/50.29	1.920/48.77	1.600/40.64		2 X 17
-X36 (LF)	2.080/52.83	2.020/51.31	1.700/43.18		2 X 18
-X40 (LF)	2.280/57.91	2.220/56.39	1.900/48.26		2 X 20
-X44 (LF)	2.480/62.99	2.420/61.47	2.100/53.34		2 X 22
-X50 (LF)	2.780/70.61	2.720/69.09	2.400/60.96		2 X 25
-X60 (LF)	3.280/83.31	3.220/81.79	2.900/73.66		2 X 30
-061 (LF)	2.280/57.91	2.220/56.39	1.900/48.26		2 X 20
-062 (LF)	1.980/50.29	1.920/48.77	1.600/40.64	D	2 X 17
-206 (LF)	.580/14.73	.520/13.21	.200/5.08	A	2 X 3
-207 (LF)	.580/14.73	.520/13.21	.200/5.08	A	2 X 3
-363 (LF)	2.780/70.61	2.720/69.09	2.400/60.96	D	2 X 25
-366 (LF)	1.980/50.29	1.920/48.77	1.600/40.64		2 X 17
-934 (LF)	1.980/50.29	1.920/48.77	1.600/40.64		2 X 17
88873-950 (LF)	2.780/70.61	2.720/69.09	2.400/60.96	D	2 X 25

NOTE 17
NOTE 9
NOTE 17
NOTE 9

NOTE 9

NOTE 9

NOTE 11
NOTE 12
NOTE 10

NOTE 13
NOTE 14

mat'l. code				tolerances unless otherwise specified		CUSTOMER COPY	Electronics FCI www.fciconnect.com	
ltr	ecn no	dr	date	linear	.XX ±.01/.X±.3	projection 	title HEADER, QUICKIE SLIMLINE, VERTICAL, 4 WALL HTP	
Z					.XXX ±.005/.XX±.13			
					XXXX ±.0020/.XXX±.051			
				angles	0° ±2°	INCH/MM scale 1:1	product family HEADER	
				dr	M.CLOUSER 1/4/93		code	
				enr	M.SMYK 1/4/93		size dwg no	
				chr	M.SMYK 1/4/93		sheet	
				appd	M.SMYK 1/4/93		4 of	
sheet index	revision sheet							