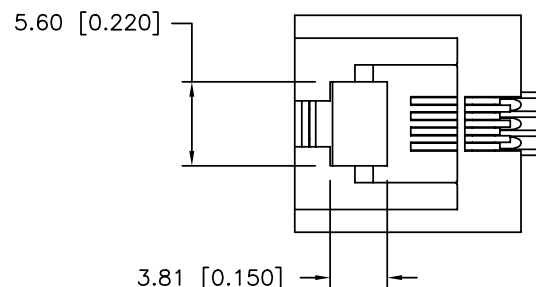
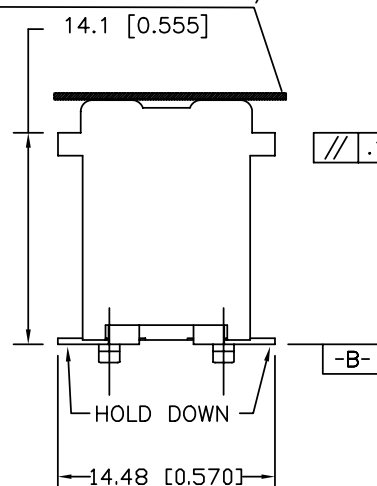


PRODUCT NO.

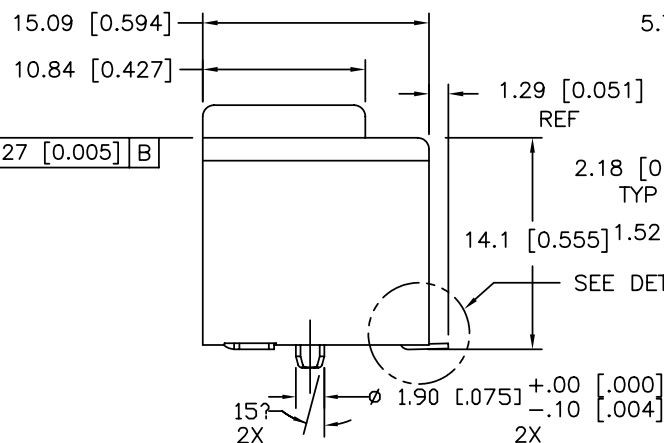
SEE TABLE



THE MYLAR SEE NOTE 7
ONLY FOR 87543-XXX1C/XXX1CLF

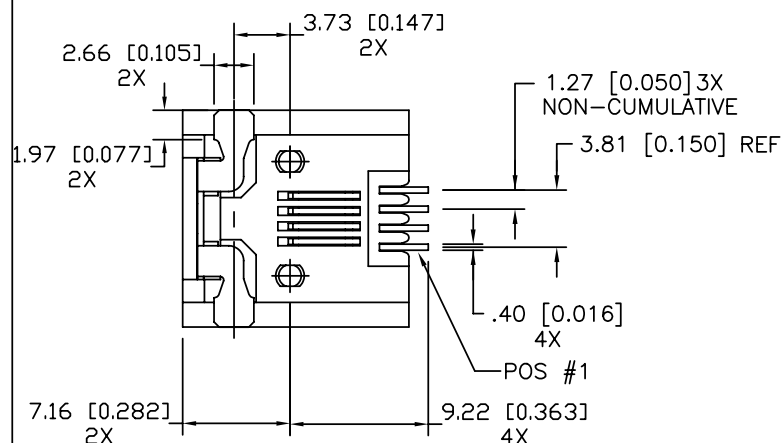
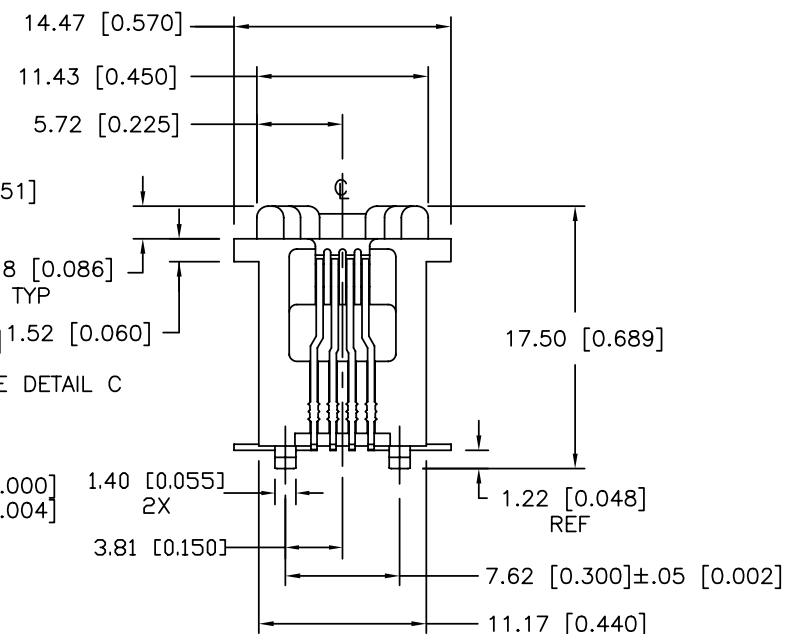
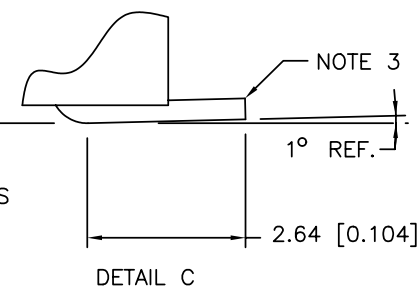


/// .127 [0.005] B



SEE DETAIL C

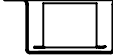


.10 [0.004]
ALL TERMINALS
MEASURED AT HEELS

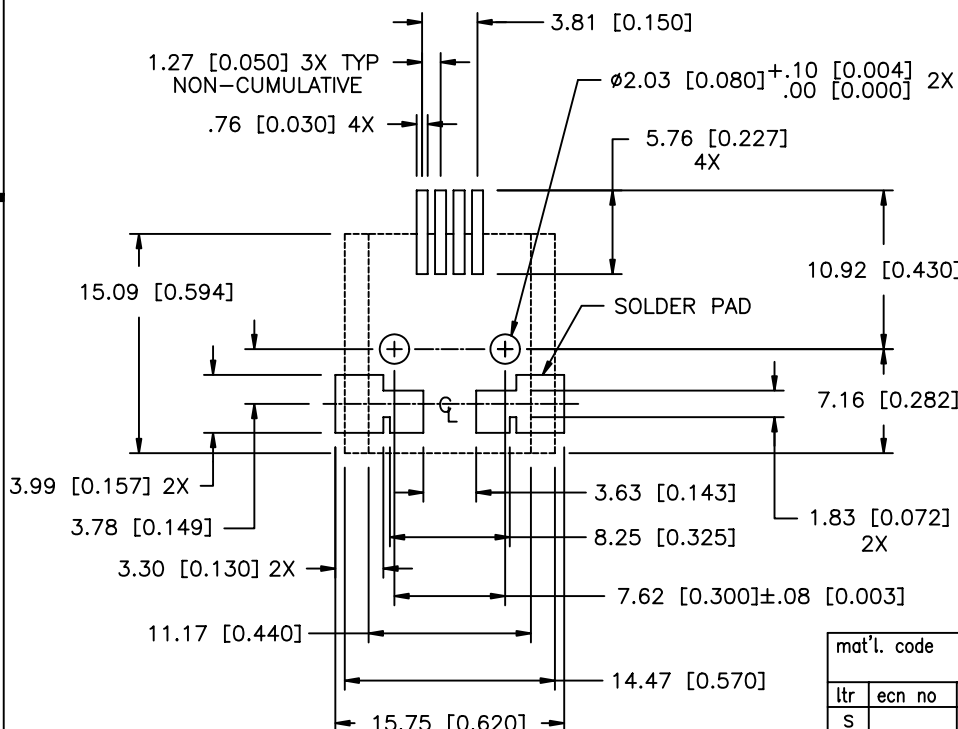


VIEW A-A

mat'l. code				tolerances unless otherwise specified		CUSTOMER COPY		FCI	
ltr	ecn no	dr	date						
S	N08-0194	SH	09/08/08	linear	.X±.3/.XX±.01	projection	title	www.fciconnect.com	
K	V12666	LP	1/10/02		.XX±.13/.XXX±.005		A-SMT ASSEMBLY VERT 4 POS		
L	V21834	LP	12/2/02	angles	.XXX±.051/.XXX±.0020				
M	V04-0861	DAI	08/30/04	dr	0° ±2°	MM/INCH	product family	MOD JACK	code
N	N05-0035	YS	02/17/05	enrg	J.KONTOS	12/2/02	size	dwg no	213
P	N05-0142	ZC	6/2/05	chr	J.KONTOS	12/2/02	87543		sheet
R	N07-0217	WG	09/07/07	appd	J.KONTOS	12/2/02	scale	1:1	1 of 2
sheet index	revision	R	R						
	sheet	1	2						

87543-XXXXLF

PACKAGE OPTIONS		
BLISTER PACKAGE (TAPE & REEL) 1 = LOADED FACE UP		24" REEL
BLISTER PACKAGE (TAPE & REEL) 2 = LOADED FACE DOWN		NOT TOOLED
3 = PACKAGED IN TUBES		NOT TOOLED
4 = PACKAGED IN TRAYS		
BLISTER PACKAGE (TAPE & REEL) 5 = LOADED FACE UP		15" REEL



RECOMMENDED PC BOARD L/O

NOTES:

- 1 MATERIAL: HOUSING – THERMOPLASTIC V-O
CONTACT – PHOSPHOR BRONZE
- 2 PLATING: SOLDER TAILS – FOR 87543-XXXX : 2.54 μm [100 μin] MIN. TIN LEAD
TIN OVER 1.27 μm [50 μin] MIN. NICKEL
OVER 2.54 μm [100 μin] NICKEL
FOR 87543-XXXXLF: 2 μm [80 μin] MIN. PURE MATTE
HOLDDOWN – FOR 87543-XXXX: 2.54 μm [100 μin] MIN TIN LEAD
CONTACT AREA PLATING – SEE CHART ON SHEET 2
OVER 2.54 μm [100 μin] NICKEL
FOR 87543-XXXXLF: 2 μm [80 μin] MIN. PURE TIN
OVER 1.27 μm [50 μin] MIN. NICKEL
- ③ MAX "TOE UP" AT TIP = 0.127 [0.005]
- 4 IF LF P/N PACKAGING MEETS GS-14-920 SPECIFICATION.
- 5 THE HOUSING WILL WITHSTAND EXPOSURE TO 260°C PEAK TEMPERATURE FOR 40 SECONDS IN A CONVECTION, INFRA-RED OR VAPOR PHASE REFLOW OVEN.
- 6 IF LF P/N THE PRODUCT MEETS EUROPEAN UNION DIRECTIVES AND OTHER COUNTRY REGULATIONS AS DESCRIBED IN GS-22-008.
- 7 APPLY THE MYLAR ON THE P/N 87543-XXX1 WITH SUFFIX "C" FOR PICKING UP .
FOR INSTANCE 87543-4111CLF

[illegible]

All rights strictly reserved. Reproduction or issue to third parties in any form whatever is not permitted without written authority from the proprietor.
Property of FCI. Copyright FCI.