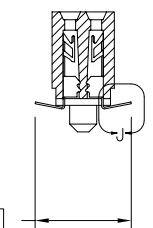
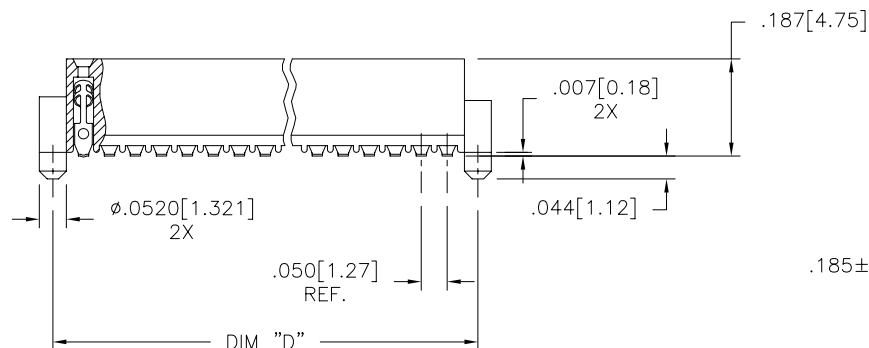
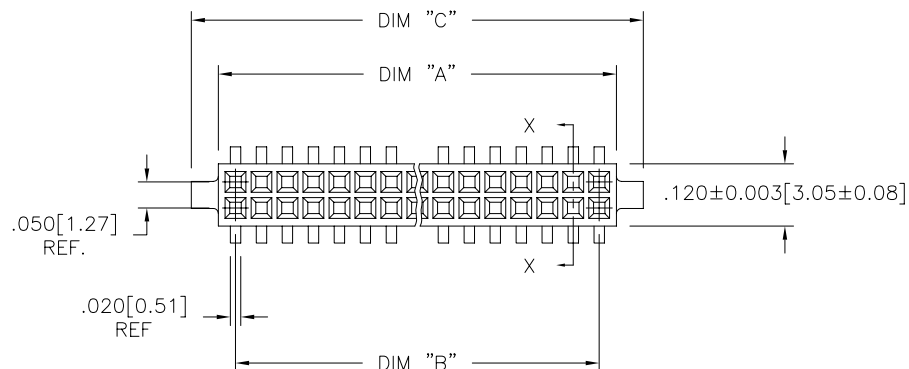
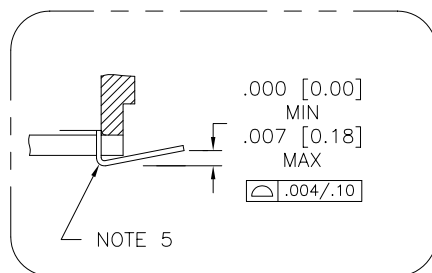


PRODUCT NUMBER
SEE TABLE



SECTION X-X



DETAIL J
SCALE 10/1

mat'l. code				surface		tolerance	projection	product family	
-				ISO 1302 ✓		ISO 406 ISO 1101	⊕	RIB CAGE	
ltr	ecn no	dr	date	tolerances unless otherwise specified			INCH/MM	title	
Y	V02780	DLW	12/01/00	angles	linear	XX ±.01/.3		.050cc VERT. CARD CONN.	
AA	V10994	DLW	3/09/01			XXX ±.005/.13		SURF. MT. W/LOC. FEATURES	
AB	V11674	CRG	6/22/01	0°±2'		XXXX ±.0020/.050	scale 3:1	dwg no	
AC	M05-0084	MHT	5/05/05	dr	M. CLOUSER	5/25/91	FCI	sheet 1 of 4	size
AD	M06-0284	AEA	7/27/06	enr	B. BARUFFALO	5/25/91		87023	A3
AE	M07-0267	MHT	6/08/07	chr	B. BARUFFALO	5/25/91		type Product Customer Drawing	
AF	M07-0345	AGS	7/26/07	app	B. BARUFFALO	5/25/91			
sheet	revision	AF	AF	AF	AF				
index	sheet	1	2	3	4				



FCIconnect.com

Copyright FCI

PRODUCT NO.
87023 - XXX

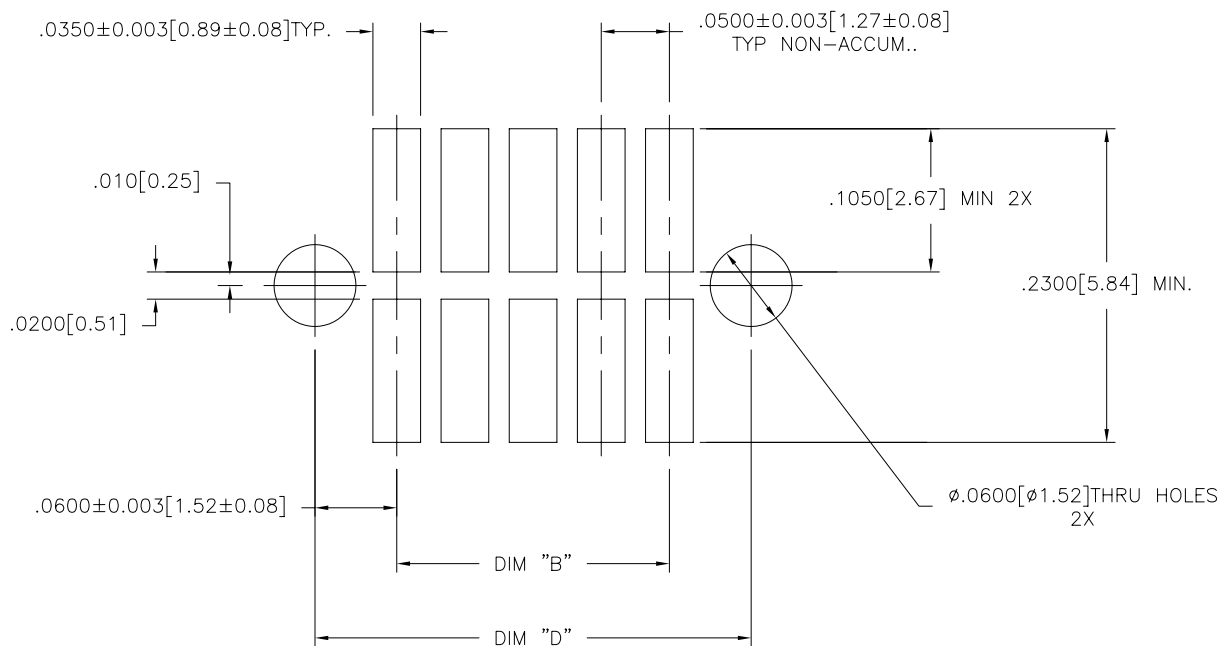
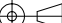


FIGURE A
RECOMMENDED
P.C.B. LAYOUT

mat'l. code —				surface ISO 1302 ✓		tolerance ISO 406 ISO 1101		projection 		product family RIB CAGE			
ltr		ecn no		dr		date		tolerances unless otherwise specified				title	
AF								angles		linear		.050cc VERT. CARD CONN.	
												SURF. MT. W/LOC. FEATURES	
								0°±2'				scale 3:1	
								dr		M. CLOUSER		5/25/91	
								engr		B. BARUFFALO		5/25/91	
								chr		B. BARUFFALO		5/25/91	
								app		B. BARUFFALO		5/25/91	
sheet index		revision sheet										dwg no	
												sheet 2 of 4 size	
												87023 A3	
												type Product Customer Drawing	

PRODUCT NO. NOTE 8		SIZE	DIM A	DIM B	DIM C	DIM D	SPECIAL PACKAGING	TAPE WIDTH PITCH	PIECES PER REEL										
87023-605		2 X 5	.266/6.756	.200/5.08	.370/9.398	.3200/8.128	NO												
-610		2 X 10	.516/13.106	.450/11.43	.620/15.748	.5700/14.478	NOTE 6	24mm	12mm	750									
-615		2 X 15	.766/19.456	.700/17.78	.870/22.098	.8200/20.828	NOTE 6	44mm	12mm	500									
-620		2 X 20	1.016/25.806	.950/24.13	1.120/28.448	1.0700/27.178	NOTE 6 & 7	44mm	12mm	500									
-625		2 X 25	1.266/32.156	1.200/30.48	1.370/34.798	1.3200/33.528	NOTE 6	56mm	12mm	500									
-630		2 X 30	1.516/38.506	1.450/36.83	1.620/41.148	1.5700/39.878	NOTE 6 & 7	56mm	12mm	500									
-635		2 X 35	1.766/44.856	1.700/43.18	1.870/47.498	1.8200/46.228	NO												
-640		2 X 40	2.016/51.206	1.950/49.53	2.120/53.848	2.0700/52.578	NOTE 7												
-645		2 X 45	2.266/57.556	2.200/55.88	2.370/60.198	2.3200/58.928	NO												
-650		2 X 50	2.516/63.906	2.450/62.23	2.620/66.548	2.5700/65.278	NO												
-905		2 X 5	.266/6.756	.200/5.08	.370/9.398	.3200/8.128	NO												
-910		2 X 10	.516/13.106	.450/11.43	.620/15.748	.5700/14.478	NO												
-915		2 X 15	.766/19.456	.700/17.78	.870/22.098	.8200/20.828	NO												
-920		2 X 20	1.016/25.806	.950/24.13	1.120/28.448	1.0700/27.178													
-925		2 X 25	1.266/32.156	1.200/30.48	1.370/34.798	1.3200/33.528	NO												
-930		2 X 30	1.516/38.506	1.450/36.83	1.620/41.148	1.5700/39.878	NO												
-935		2 X 35	1.766/44.856	1.700/43.18	1.870/47.498	1.8200/46.228	NO												
-940		2 X 40	2.016/51.206	1.950/49.53	2.120/53.848	2.0700/52.578	NO												
-945		2 X 45	2.266/57.556	2.200/55.88	2.370/60.198	2.3200/58.928	NO												
87023-950		2 X 50	2.516/63.906	2.450/62.23	2.620/66.548	2.5700/65.278	NO												

XXXX

BASE NUMBER

X

YY

LF

LEAD FREE OPTION NOTE 8

No. POSITION

PLATING NUMBER

NOTES:

① HOUSING MATERIAL:
GLASS FILLED THERMOPLASTIC FLAME RETARDANT PER UL 94V-0
COLOR: BLACK

② TERMINAL MATERIAL: BeCu

③ TERMINAL PLATING:
LEAD FREE OPTION
-6XXLF- 30u"/.76u MIN HARD GOLD OVER Ni ON CONTACT ZONES.
100u"/2.54u MIN PURE TIN OVER Ni
IN SOLDERING ZONES,OTHERWISE GOLD FLASH OR UNPLATED.
-9XXLF- 60u"/1.52u MIN HARD GOLD ON CONTACT ZONES,
100u"/2.54u MIN PURE TIN OVER Ni
OVER Ni IN SOLDERING ZONES, OTHERWISE GOLD FLASH OR UNPLATED.
TIN LEAD OPTION
-6XX- 30u"/.76u MIN HARD GOLD OVER Ni ON CONTACT ZONES.
100u"/2.54u MIN SnPb OVER Ni
IN SOLDERING ZONES,OTHERWISE GOLD FLASH OR UNPLATED.

4 APPLICATION INFORMATION:
A. RECOMMENDED MOUNTING PAD PATTERN IS
SHOWN IN FIGURE "A".

B. MATING PINS TO BE .0176/447 TO .0181/459 DIA.

C. MATING PIN TIPS TO BE IN TRUE POSITION TO MATING
GRID WITHIN .006/15 DIA.

D. SUGGESTED MATING PIN LENGTH .130/3.30
±.010/25.

⑤ LEAD TIPS TO BE ABOVE HEEL,UP TO .007/0.18 MAX.
COPLANARITY TO BE MEASURED AT LOWEST POINT (HEEL).

⑥ ADD "TR" TO END OF DASH NUMBER FOR TAPE AND REEL
PACKAGED WITH CAP. TOOLED ONLY FOR NOTED CONNECTORS.

7. ADD "CT" TO END OF DASH NUMBER FOR CONNECTOR WITH
CAP FOR VACUUM PICKUP IN TUBE.

⑧ ADD LF SUFFIX AT THE END OF PART NUMBER
FOR LEAD FREE OPTION.

9. THE HOUSING WILL WITHSTAND EXPOSURE TO 260°C PEAK TEMPERATURE
FOR 20 SECONDS IN A CONVECTION, INFRA-RED OR VAPOR PHASE REFLOW
OVEN. SEE APPLICATION NOTE/PROCEDURES IF THEY ARE AVAILABLE.

⑩ THIS PRODUCT MEETS EUROPEAN UNION DIRECTIVES AND OTHER
COUNTRY REGULATION AS DESCRIBED IN GS-22-008.

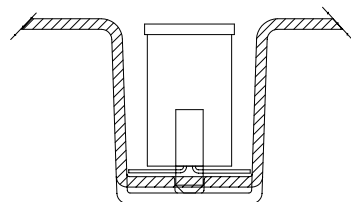
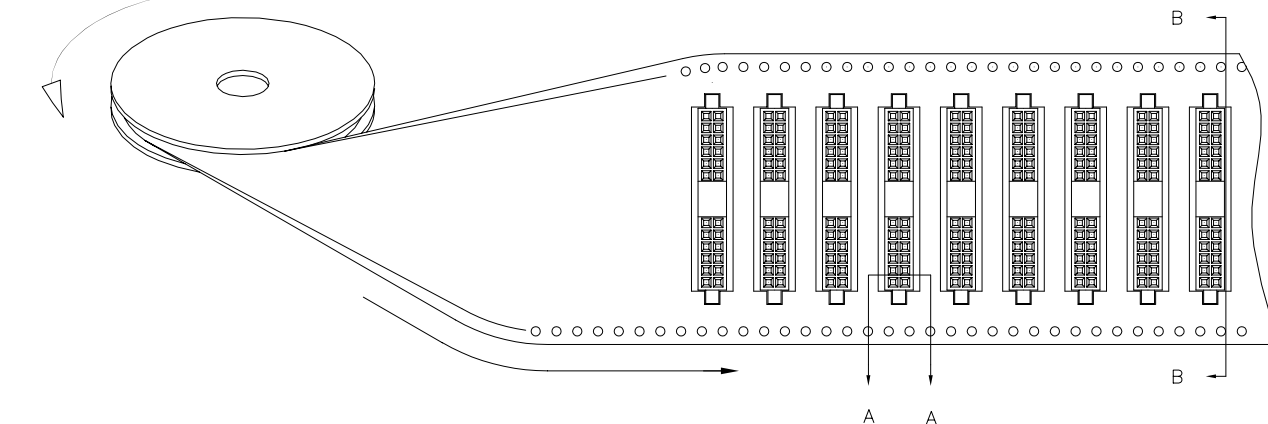
mat'l. code		surface		tolerance		projection		product family	
-		ISO 1302		ISO 406				RIB CAGE	
ltr		ecn		no		date		title	
AF								.050cc VERT. CARD CONN.	
								SURF. MT. W/LOC. FEATURES	
								dwg no	
								87023	
								sheet3 of 4	
								A3	
								type	
								Product Customer Drawing	
sheet		revision							
index		sheet							

PRODUCT NUMBER
SEE TABLE

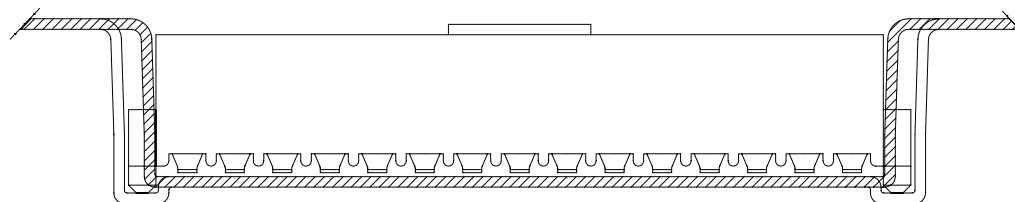
UNREELING
DIRECTION

REFERENCE ONLY

TAPE WIDTH'S 32mm AND ABOVE HAS BOTH FEED TRACKS,
BELOW 32mm HAS TOP FEED TRACK ONLY.



SECTION A-A



SECTION B-B

mat'l. code -				surface ISO 1302 ✓	tolerance ISO 406 ISO 1101	projection 	product family RIB CAGE
ltr	ecn	no	dr	date	tolerances unless otherwise specified		title
AF					angles	linear	.050cc VERT. CARD CONN.
					0°±2'	xxx ±.01/.3 xxx ±.005/.13 xxxx ±.0020/.050	SURF. MT. W/LOC. FEATURES
					dr	M. CLOUSER 5/25/91	dwg no
					enr	B. BARUFFALO 5/25/91	87023
					chr	B. BARUFFALO 5/25/91	sheet 4 of 4
					app	B. BARUFFALO 5/25/91	size A3
sheet	revision						type
index	sheet						Product Customer Drawing

