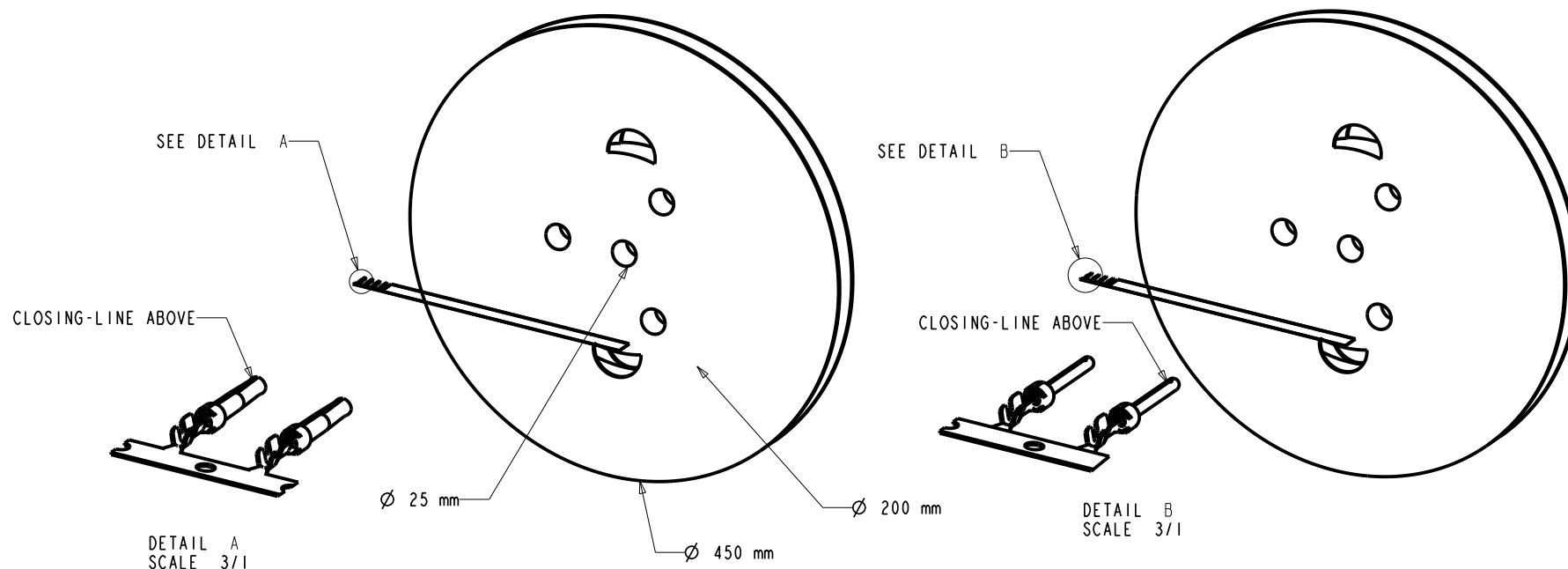


# REFERENCE FOR REEL ACCORDING TO FEEDING DIRECTION

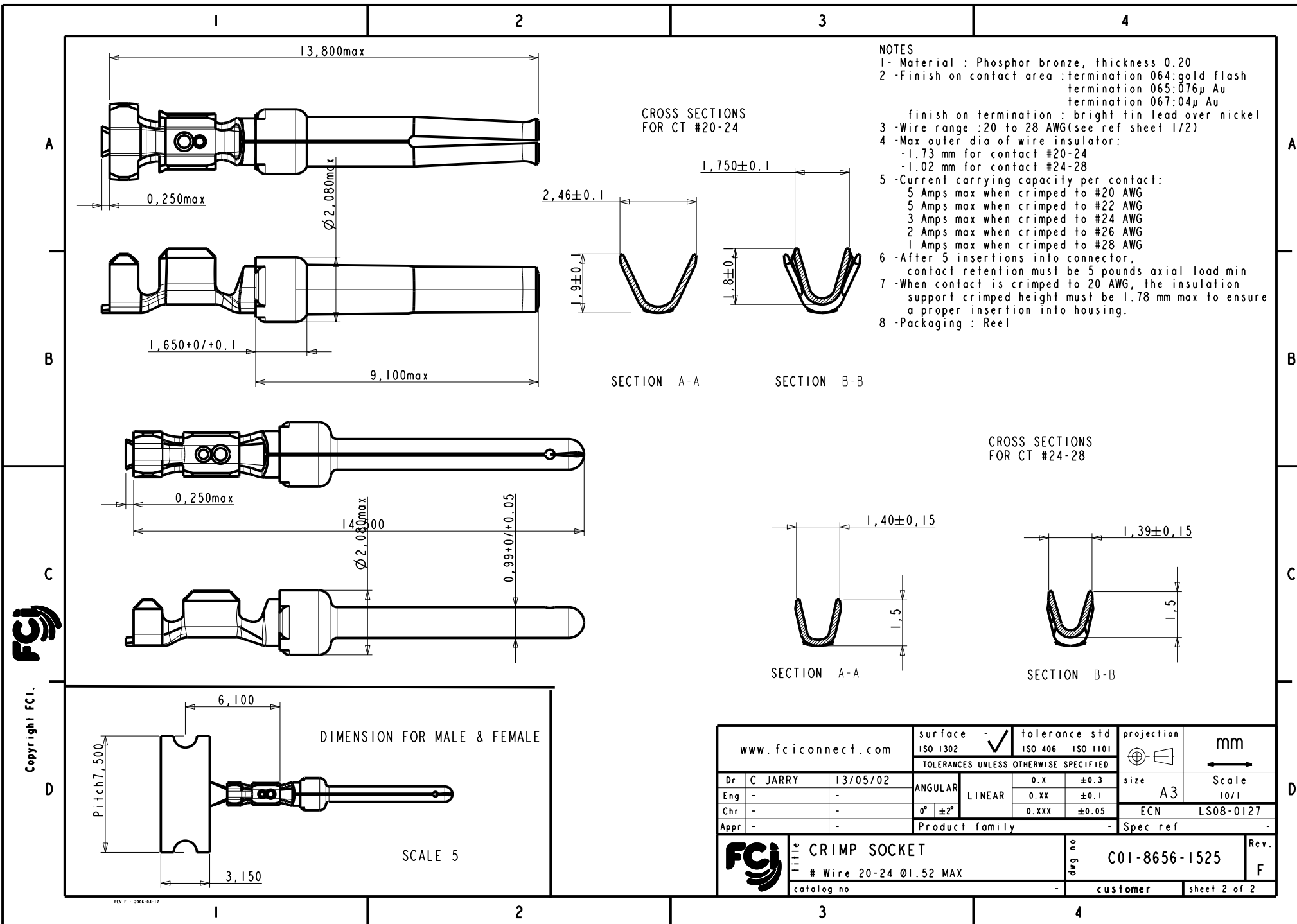
GAUGE	REEL OF 5000 FEMALE CONTACTS		REEL OF 10000 FEMALE CONTACTS	GAUGE	REEL OF 5000 PIN CONTACTS		REEL OF 10000 PIN CONTACTS
# 24-28	86566710064	86566710064LF	-----	# 24-28	86564710064	86564710064LF	-----
# 20-24	86566720064	86566720064LF	-----	# 20-24	86564720064	86564720064LF	-----
# 24-28	86566710065	86566710065LF	-----	# 24-28	86564710065	86564710065LF	-----
# 20-24	86566720065	86566720065LF	-----	# 20-24	86564720065	86564720065LF	-----
# 24-28	86566710067	86566710067LF	-----	# 24-28	86564710067	86564710067LF	-----
# 20-24	86566720067	86566720067LF	-----	# 20-24	86564720067	86564720067LF	-----



NOTE : ROHS INFORMATIONS  
The LF products meet European union directives and other country regulations as described in GS-22-008  
Terminations plating spec : 2um Nickel min + 2um Sn min  
Packaging Spec : see GS-14-920

rev	ecn no	dr	date
E	LS06-196	MPE	27/11/2006
F	LS08-0127	MPE	2008/05/13
-	-	-	-
-	-	-	-
-	-	-	-
-	-	-	-

www.fciconnect.com			surface - <input checked="" type="checkbox"/> ISO 1302	tolerance std ISO 406 ISO 1101	projection	mm
			TOLERANCES UNLESS OTHERWISE SPECIFIED			
Dr	C JARRY	13/05/02	ANGULAR	0.X ±0.3	size A3	Scale 5/1
Eng	-	-	LINEAR	0.XX ±0.1		
Chr	-	-	0° ±2°	0.XXX ±0.05	ECN LS08-0127	
Appr	-	-	Product family	-	Spec ref	-
			CRIMP SOCKET			Rev. F
			# Wire 20-24 Ø1.52 MAX			
			catalog no	-	customer	sheet 1 of 2
			dwg no	C01-8656-1525		



Copyright FCI.

REV 1 - 2006-04-17

www.fciconnect.com			surface - <input checked="" type="checkbox"/> ISO 1302	tolerance std <input checked="" type="checkbox"/> ISO 406 ISO 1101	projection	mm
			TOLERANCES UNLESS OTHERWISE SPECIFIED			
Dr	C JARRY	13/05/02	ANGULAR	LINEAR	size A3	Scale 10/1
Eng	-	-	0° ±2°	0.X ±0.3	ECN LS08-0127	
Chr	-	-		0.XX ±0.1		
Appr	-	-	Product family			Spec ref -
FCI			title CRIMP SOCKET			Rev. F
			# Wire 20-24 Ø1.52 MAX			
			catalog no	dwg no C01-8656-1525	customer sheet 2 of 2	