

1

2

3

4

A

A

Plating active zone 1.27 μ mini	Plating active zone 0.8 μ mini	Plating active zone 0.4 μ mini	Plating active zone 1.27 μ mini	Plating active zone 0.8 μ mini	Plating active zone 0.4 μ mini						
8638PSC4007	8638PSC4006	8638PSC4005	8638PSC4007LF	8638PSC4006LF	8638PSC4005LF	40	8-10	5-8	4.70	5.50	blue
8638PSC3007	8638PSC3006	8638PSC3005	8638PSC3007LF	8638PSC3006LF	8638PSC3005LF	30	9	6	3.75	4.75	white
8638PSC2007	8638PSC2006	8638PSC2005	8638PSC2007LF	8638PSC2006LF	8638PSC2005LF	20	12-14	2-3	2.80	3.70	red
8638PSC1007	8638PSC1006	8638PSC1005	8638PSC1007LF	8638PSC1006LF	8638PSC1005LF	10	16-18	0.9-1.3	1.80	2.55	black
TIN LEAD PART NUMBER	TIN LEAD PART NUMBER	TIN LEAD PART NUMBER	LEAD FREE PART NUMBER	LEAD FREE PART NUMBER	LEAD FREE PART NUMBER	CURRENT max A	AWG	mm ²	$\phi A^{+0}_{-0.05}$	$\phi B^{+0}_{-0.05}$	Clip colour
						WIRE AREA					

B

B

NOTE:RoHS INFORMATIONS

- The "LF" products meet European union Directives and other country regulations as described in 65-22-008.
- Termination plating spec: Cu 2 +0 +2 μ m, Sn 3 +0 +3 μ m (pure matte)
- Packaging spec: see 65-14-920 contact:CuZn40 Pb3 1 μ Ni+gold

Materials and finish for TIN LEAD

contact:CuZn40 Pb3 1 μ Ni+goldCrimping sleeve:CuZn40Pb3 tempering 2 μ Ni+2 μ SnPb mini

Clip : plastic

Technical characteristics

Peak voltage: 750Veff.

Operating voltage: 500Veff.

Temperature range:-55°C \pm 125°C

Packaging per 100

Current capability see table

Mechanical characteristics:

Crimping test:according to MILC39029

Mechanical endurance : \geq 200 matings/unmatings .

Contact insertion force in insulator:

60N maxi in a hole of 4.80mm

Examination of product:

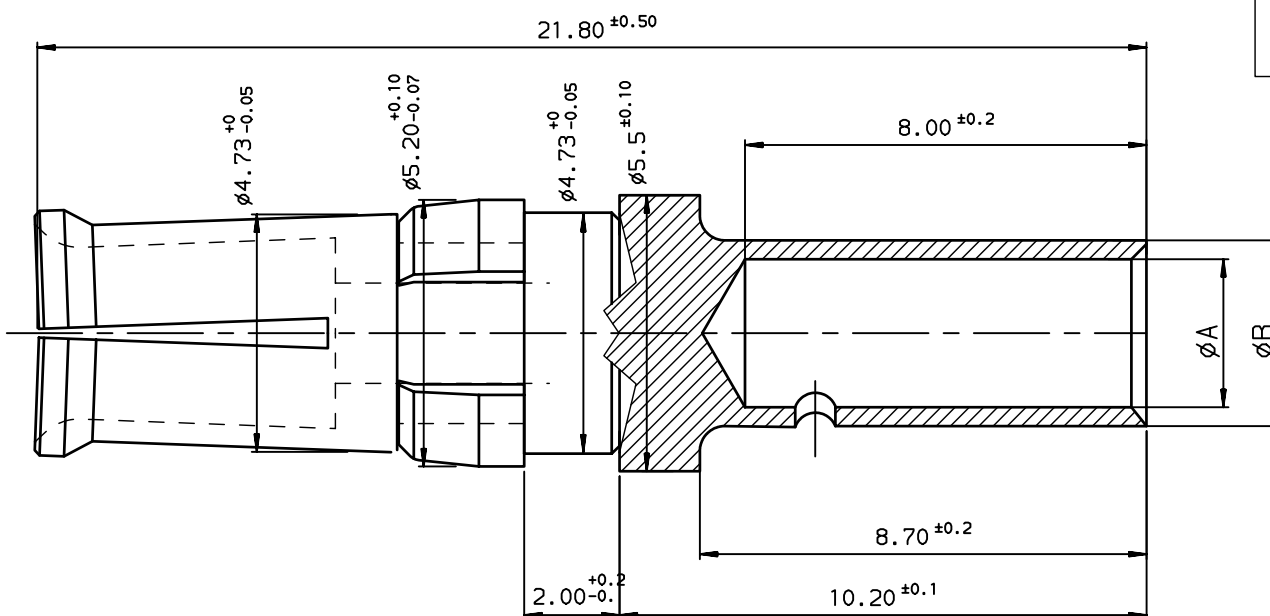
Remove all burns and sharp edges 0.08 maxi

No scratch on all pieces

European Views

C

C



D

D

rev	ecn no	dr	date
F	-	CJA	2002/02/28
G	LS05-006	MPE	2005/04/14
H	LS06-0097	LGO	2006/07/27
J	LS08-0029	MPE	2008/01/28
-	-	-	-
-	-	-	-
-	-	-	-

www.fciconnect.com		surface ISO 1302	tolerance std ISO 406 ISO 1101	projection A3	mm
		TOLERANCES UNLESS OTHERWISE SPECIFIED			
		ANGULAR	0.X	± 0.1	size
		LINEAR	0.XX	± 0.1	A3
		0.XX' $\pm 2^\circ$	0.XXX	± 0.1	Scale 10
		Product family			ECN LS08-0029
		D-SUB			Spec ref -
FCI		FEMELLE POWER CONTACT			Rev.
		FOR CRIMP CONNECTION			J
catalog no		C01-8638-0326			dwg no
		CUSTOMER			sheet 1 of 1

REV F - 2006-04-17

1

2

3

4