

1

2

3

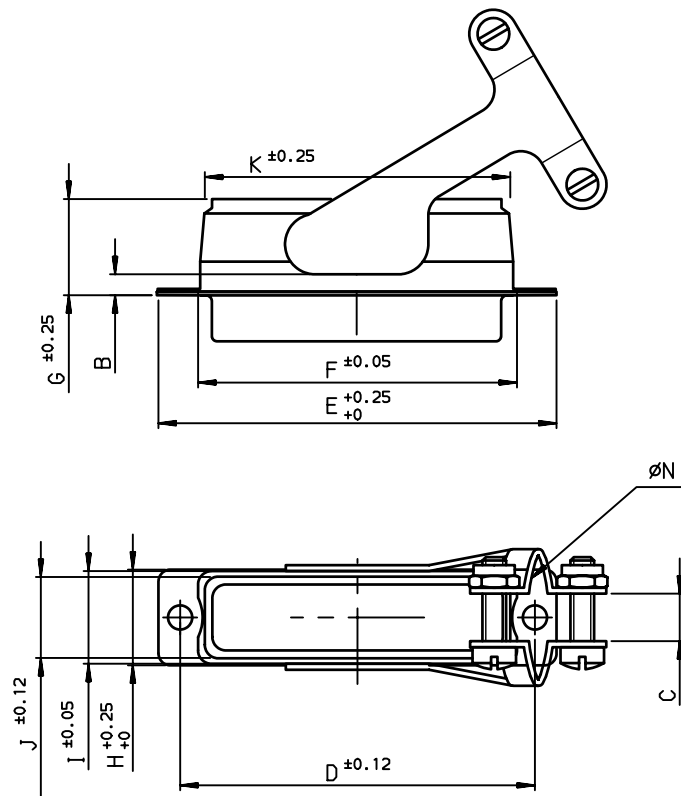
4

Dimensions are in millimeters

Shell size	PART NUMBER	B	C	D	E	F	G	H	I	J	K	ØN
E	863016	2.4	2.4	24.99	30.55	20.21	12.3	12.7	12.28	10.74	18.6	8
A	863017	2.4	3.2	33.32	38.89	28.55	12.3	12.7	12.28	10.74	27	10
B	863018	3.2	4.75	47.04	52.78	42.29	12.3	12.7	12.28	10.74	40.5	15
C	863019	3.2	6.35	63.50	69.06	58.75	12.3	12.7	12.28	10.74	56.96	18
D	863020	3.2	4.75	61.11	66.67	56.36	12.3	15.4	15.15	13.02	55.03	20.6

NOTES

- MATERIAL : STEEL
- PLATING : YELLOW CHROMATE CADMIUM
- CORROSION RESISTANCE : 50 HOURS EXPOSURE TO SALT SPRAY
- PACKAGING : PER 100 PIECES



rev	ecn no	dr	date
A	-	JOU	2002/04/11
B	LS06-0097	LGO	2006/07/28
C	LS09-0006	PCR	2009/01/08
-	-	-	-
-	-	-	-
-	-	-	-
-	-	-	-

www.fciconnect.com		surface ISO 1302	tolerance std ISO 406 ISO 1101	projection A3	mm
		TOLERANCES UNLESS OTHERWISE SPECIFIED		size	Scale
Dr	JOUBERT	2002/04/11	ANGULAR	0.X	±0.1
Eng	PESSON	2002/04/11	LINEAR	0.XX	±0.1
Chr	LEGARE	2002/04/11	0.XX' ±2'	0.XXX	±0.1
Appr	LEGARE	2002/04/11	Product family	D-SUB	Spec ref -
FCI		METAL HOOD WITH CIRCULAR CLAMP		20	Rev.
title		ANGLE EXIT D SUB ACCESSORIES		dwg no	C01-8655-1559
catalog no		-		CUSTOMER sheet 1 of 1	

REV F - 2006-04-17

1

2

3

4