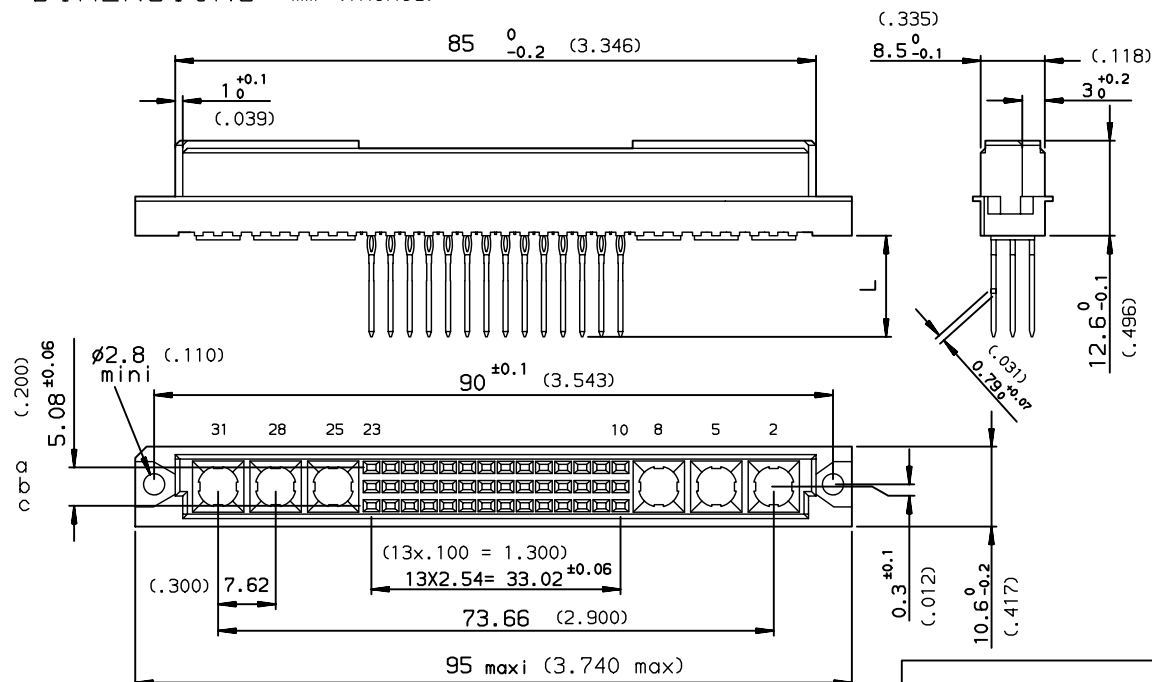
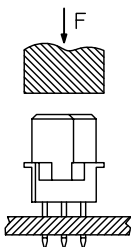


DIMENSIONS mm (inches)

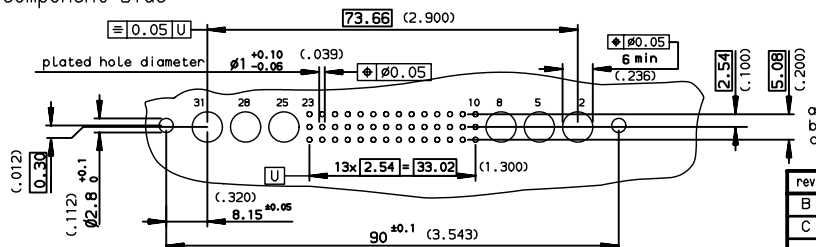


METHOD OF INSERTION
ON THE PCB = FLAT ROCK



PCB DRILLING
component side

PERFORMANCES AS PER DIN 41612



ELECTRICAL DATA (for signal contacts)

-Current at AMB.	1.5 A at 20° C / 1 A at 70° C
-I max	2A
-Contact resistance	≤20mΩ according to DIN 41640 Teil 4 test 2a
-Insulation resistance	≥10 ⁶ MΩ according to DIN 41640 teil 7 test 3a
-TEST VOLTAGE	according to DIN 41640 teil 21
contact/contact	1000V eff (0.5 mA / 50 Hz)
contact/ground	1550V eff (0.5 mA / 50 Hz)
-Press Fit termination resistance	≤1 mΩ

MECHANICAL DATA (for signal contacts)

-Mating force	42 Cts : ≤40N (9 lb) / 28 Cts : ≤26N (5.85 lb)
-Unmating force	42 Cts : ≥6.5N (1.45 lb) / 28 Cts : ≥4.3N (1 lb)
-Mechanical endurance	class 1 500 matings unmatings according to DIN41640 teil 21
	class 2 400
	class 3 50

-Press in insertion force per pin	180 N (40.7 lb) max / 75 N (17 lb) standard
-Material insulator	Polyester thermoplastic UL94V0
-Material contacts	Phosphor bronze
-Finishing contact surface	Gold over Nickel
-Finishing termination	Tin Lead
-Shock	≤40mΩ according to DIN 41640 Teil 14 test 6c
-Vibration	class 1 10-2000Hz/20g according to DIN 41640 Teil 15
	class 2 10-500Hz/5g
-Backpanel or PCB thickness:	1.6 , 2.4 or 3.2 mm

ENVIRONMENTAL DATA

-Climatic category	According to DIN 41612
-Corrosion	According to DIN 41612

PART NUMBER 8609--F1--7--5-000-E3

PIN OUT
rows a-b-c
rows a-c

3 42
4 28

NUMBER OF CONTACTS




TERMINATION

L = 13.10 ±0.20 (0.515)	1 wrap	91
L = 17.10 ±0.20 (0.673)	2 wraps	92
L = 3.00 ±0.20 (0.118)	short post	94

PERFORMANCE CLASS

DIN 41612 class 3	4
DIN 41612 class 2	5
DIN 41612 class 1	6

European Views

www.fciconnect.com			surface ISO 1302		tolerance std ISO 406 ISO 1101		projection 		mm 			
			TOLERANCES UNLESS OTHERWISE SPECIFIED									
Dr	LEGALLIC	1997/11/05	ANGULAR	LINEAR	0.X	±0.1	size A3	Scale 1.5				
Eng	LEGALLIC	1997/11/05			0.XX	±0.1		ECN LS07-0130				
Chr	LEGARE	1997/11/05			0.XX [*] ±2 [*]	0.XXX			±0.1			
Appr	LEGARE	1997/11/05	Product family				DIN	Spec ref -				
			title STRAIGHT FEMALE STYLE M PRESS FIT				dwg no C-8609-0557			Rev. C		
										catalog no -		CUSTOMER sheet 1 of 1

rev	ecn no	dr	date
B	-	HLE	1997/11/05
C	LS07-0130	HLE	2007/05/22
-	-	-	-
-	-	-	-
-	-	-	-
-	-	-	-