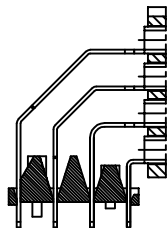
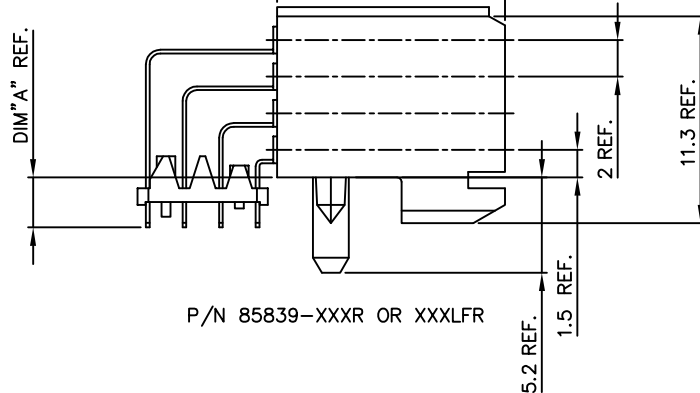


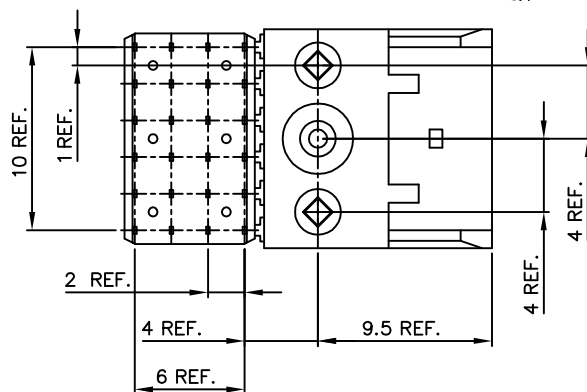
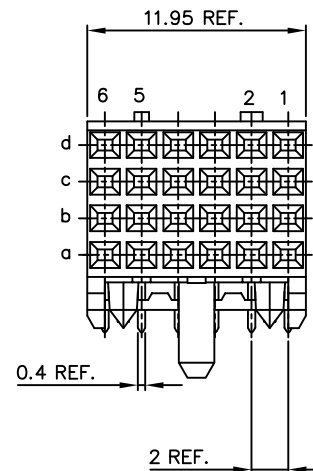
PC BOARD VERSIONS		
PRODUCTNR:	PCB THICKNESS	DIM "A"
85839-X01/X01LF	1.6	2.90
85839-X11/X11LF	2.4	3.53



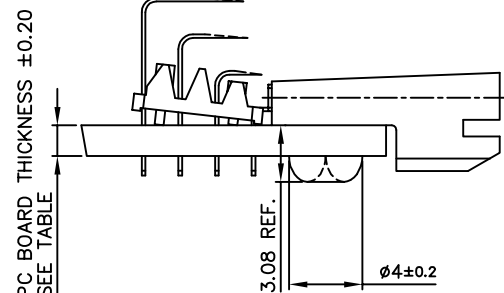
P/N 85839-XXX OR XXXLF



P/N 85839-XXXR OR XXXLFR

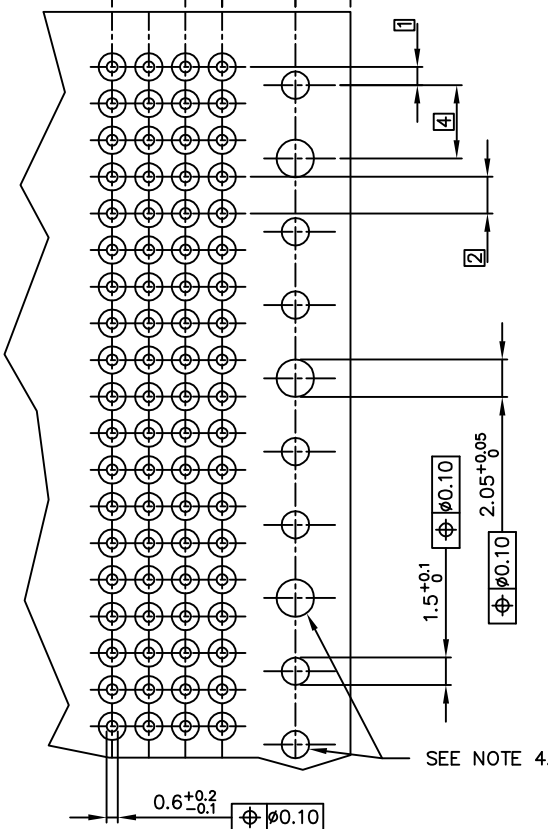


PRODUCT AFTER HOT RIVETTING.



#### NOTES:

- 1 BODY MAT'L: LIQUID CRYSTAL POLYMER 30% GLASS  
FLAME RETARDANT ACC. UL 94-V0
- 2 TERMINAL MATERIAL: PHOSPHOR BRONZE.
- 3 PLATING SOLDER TAILS 2-8 um SnPb 90-97 OR 2-8 um  
PURE Sn FOR LEAD FREE.
- 4 INDICATED HOLES ARE UNPLATED.
- 5 PRODUCT MARKING: PARTNUMBER & BATCH ID.
- 6 THIS PRODUCT MEETS EUROPEAN UNION DIRECTIVES AND OTHER  
COUNTRY REGULATIONS AS DESCRIBED IN GS-22-008.
- 7 THE HOUSING WILL WITHSTAND EXPOSURE TO 260DEGREE PEAK  
TEMPERATURE FOR 10 SECONDS IN A WAVE SOLDER APPLICATION.



RECOMMENDED HOLE PATTERN,  
COMPONENT SIDE.

PLATING CONTACT AREA:	
PRODUCT NR:	PERFORMANCE AREA
85839-301/301LF	CUSTOMER SPECIAL
85839-701/701LF	CUSTOMER SPECIAL
85839-711/711LF	CUSTOMER SPECIAL

mat'l. code		tolerances unless otherwise specified		CUSTOMER COPY		FCE ELECTRONICS	
ltr	ecr no	dr	date	projection	title	product fam	code
J	D607-0189	Cent	05/15/07	linear	RA FEMALE SIGNAL STB 12 mm VERSION	METRAL(tm)	213
C	H80105	PHE	980211	angles	mm	size dwg no	sheet
D	H80149	PHE	980305	dr	P. Hendriks	971114	1 of 1
E	H90671	LLA	991220	engr	P. Schalk	971114	
F	H10259	GNV	010629	chr	P. Schalk	971114	
H	p604-0104	CLW	041223	app	H. Coolmans	971114	
sheet	revision	J		scale	5:1		
index	sheet	1					

PDM: Rev:J

STATUS: Released

Printed: Dec 28, 2007