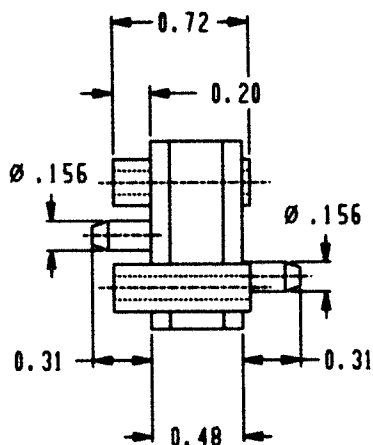
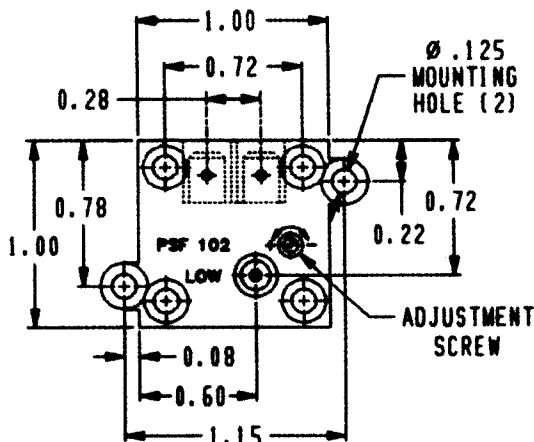
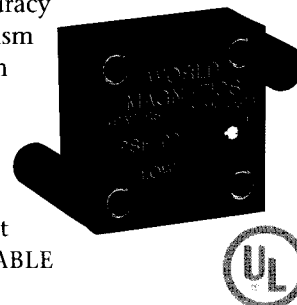


PSF102 Series *for sensing pressure, vacuum & differential pressure*

FEATURES

- FIELD ADJUSTABLE SET POINT – high resolution/high accuracy field adjustment mechanism
- Adjustable set points from 0.1" to 100.0" H₂O
- Gold inlay contacts
- Variety of options for ports and mounting
- Small size and lightweight
- PCB TERMINALS AVAILABLE



SPECIFICATIONS

MECHANICAL	
Switch Type	SPST normally open
Switching Medium	Air; compatible fluids on "High" side
Mechanical Life	More than 20 million cycles
Proof Pressure	See chart
Weight	Less than 10 grams
Operating Temp.	+40°F to +150°F (standard) -46°F to +205°F (consult factory)
PHYSICAL	
Mounting	Use #4 screws thru mounting lugs or #2 screws thru eyelets
Case Material	Polycarbonate standard (other materials available upon request)
Contact Material	18K Gold inlay
Diaphragm Material	Polyurethane standard (Teflon® optional)
Electrical Connections	Terminals – .187"x .020" spade (recessed) for use with quick disconnects uninsulated (ref. AMP Faston, 187 Series) PCB terminals available
Pressure Ports	Refer to DesignFLEX™ chart for standard options
ELECTRICAL	
Current Rating	40mA resistive for life in excess of 20 million cycles
Operating Voltage	AC/DC – 30V or less with resistive load; 120 VAC neon lamp load

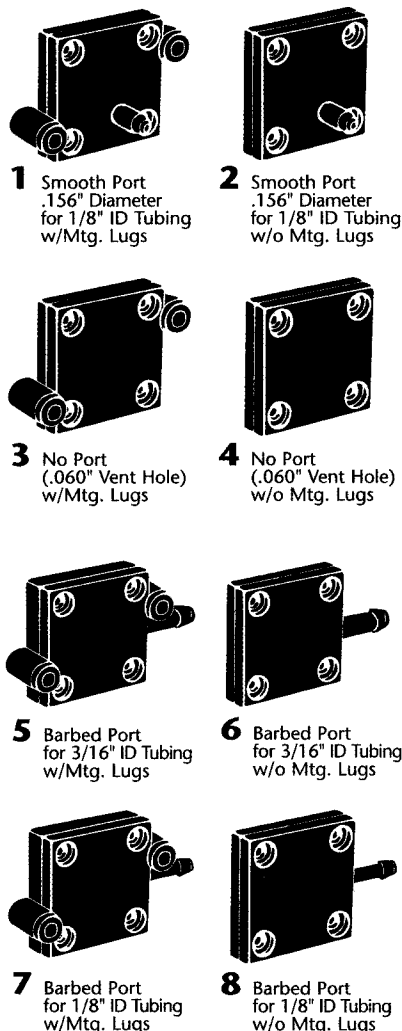
NOTE: For higher current capabilities, refer to our PSF103 or PSF109 DesignFLEX™ series.



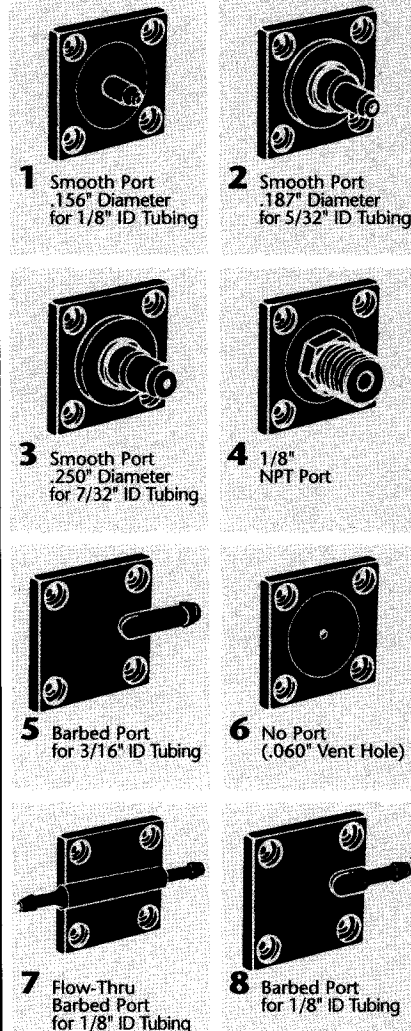
PSF102 Series *for sensing pressure, vacuum & differential pressure*

DESIGNFLEX™ OPTIONS With World Magnetix's exclusive DesignFLEX™ feature, you can choose from these available options to custom-design a pressure switch to suit your needs.

Low Port/Housing Options



High Port/Cover Options



Pressure Set Point Options

Option No.	In. H ₂ O	mbar	PSI	Proof Pressure	Tolerance
710	0.1 to 0.5	0.25 to 1.25	.004 to .018	2 PSI	±0.1 In. H ₂ O
711	0.5 to 2.0	1.25 to 4.98	.018 to .072	4 PSI	±0.2 In. H ₂ O
712	2.0 to 15.0	4.98 to 37.37	.072 to .541	8 PSI	±0.5 In. H ₂ O
713	15.0 to 100.0	37.37 to 249.10	.541 to 3.606	15 PSI	±10%

Diaphragm Options

- 1** Polyurethane (standard)
- 2** Teflon (optional)

DESIGN GUIDE

Choose one option number from each of the above categories and arrange in the sequence shown here.

7				—			
PSF102 Series Number	Low Port/Housing Option Number	High Port/Cover Option Number	Diaphragm Option Number		Three Digit Pressure Set Point Option Number		

Example:

7112-710 = PSF102 Series ultra sensitive pressure switch with • Low Port/Housing, .156" Diameter, Smooth Port with Mounting Lugs • High Port/Cover, .156" Diameter, Smooth Port • Teflon Diaphragm • Adjustable Set Point Range: 0.1" to 0.5" H₂O

